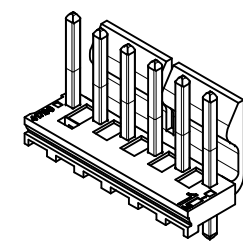
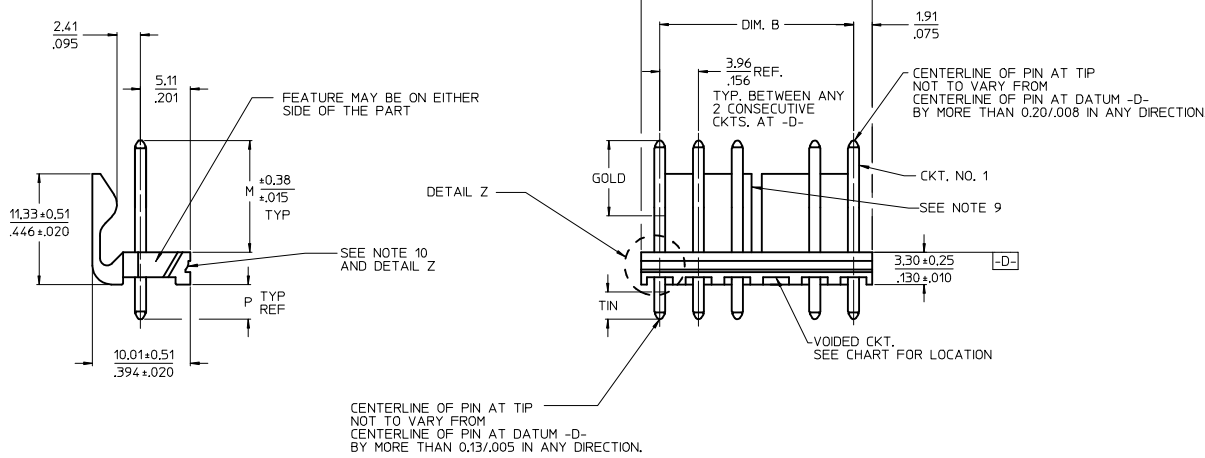
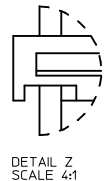


10 9 8 7 6 5 4 3 2 1

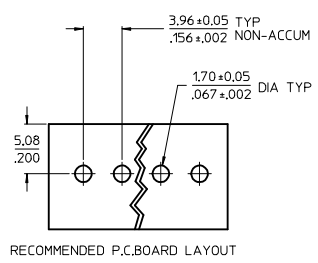


CKT	DIM. A	DIM. B	SLOT LOC BETWEEN CKTS
2	7.77 .306	3.96±0.05 .156±0.02	NONE
3	11.73 .462	7.92±0.08 .312±0.03	NONE
4	15.70 .618	11.89±0.08 .468±0.03	NONE
5	19.66 .774	15.85±0.10 .624±0.04	NONE
6	23.62 .930	19.81±0.10 .780±0.04	3 & 4
7	27.58 1.086	23.77±0.10 .936±0.04	4 & 5
8	31.55 1.242	27.74±0.13 1.092±0.05	4 & 5
9	35.51 1.398	31.70±0.13 1.248±0.05	5 & 6
10	39.47 1.554	35.66±0.13 1.404±0.05	5 & 6
11	43.43 1.710	39.62±0.15 1.560±0.06	6 & 7
12	47.40 1.866	43.59±0.15 1.716±0.06	4 & 5 8 & 9
13	51.36 2.022	47.55±0.15 1.872±0.06	4 & 5 9 & 10
14	55.32 2.178	51.51±0.18 2.028±0.07	5 & 6 9 & 10
15	59.28 2.334	55.47±0.18 2.184±0.07	5 & 6 10 & 11
16	63.25 2.490	59.44±0.18 2.340±0.07	5 & 6 11 & 12
17	67.21 2.646	63.40±0.20 2.496±0.08	6 & 7 11 & 12
18	71.17 2.802	67.36±0.20 2.652±0.08	6 & 7 12 & 13



DETAIL Z
SCALE 4:1

- NOTES:
 1. MATERIAL: HEADER-GLASS FILLED POLYESTER, 94V-0, MOLDED NATURAL (WHITE).
 2. FINISH:
 (154-TIN) OVERALL TIN: 0.00254/.000100 MIN.
 OVER 0.00127/.000050 MIN NICKEL.
 (197-TIN) OVERALL REFLOWED MATTE TIN: 0.00152/.000060 MIN.
 OVER 0.00127/.000050 MIN. NICKEL OVERALL.
 (222-TIN) OVERALL MATTE TIN: 0.00254/.000100 MIN.
 OVER 0.00127/.000050 MIN NICKEL.
 (208-15 GOLD) SELECT GOLD: 0.00038/.000015 MIN. SELECT TIN: 0.00254/.000100 MIN.
 OVERALL NICKEL UNDERPLATE: 0.00127/.000050 MIN.
 (228-30 GOLD) SELECT GOLD: 0.00076/.000030 MIN. SELECT TIN: 0.00254/.000100 MIN.
 OVERALL NICKEL UNDERPLATE: 0.00127/.000050 MIN.
 (241-20 GOLD) 0.00051/.000020 MIN.
 SELECT TIN: 0.00254/.000100 MIN.
 OVERALL NICKEL UNDERPLATE: 0.00127/.000050 MIN.
 3. PRODUCT SPECIFICATION AND PROCESS PARAMETERS: SEE PS-08-50.
 4. PACKAGING INFORMATION: SEE CHARTS.
 5. SOLDERABILITY: PER SMES-152.
 6. PIN PUSH-OUT FORCE: PRIOR TO SOLDERING, A 3 LB. MINIMUM FORCE (IN EITHER DIRECTION)
 7. PARTS ARE STACKABLE END TO END ON 3.96/.156 CENTERS.
 8. THIS PART CONFORMS TO CLASS B REQUIREMENTS OF COSMETIC SPECIFICATION PS-45499-002.
 9. SLOTS ON BACKWALL ARE BETWEEN CIRCUITS. SEE CHART FOR LOCATION.
 10 FEATURE MAY OR MAY NOT EXTEND ACROSS THE ENTIRE FACE OF THE PART "SEE DETAIL Z".



RECOMMENDED P.C.BOARD LAYOUT

2-*	Q5
1	Q5
SHT	REV

ADD 41791-1312
 EC NO: UCP2014-3535
 DRAWN: KIPPER 2014/02/25
 CHKD: NGUYEN 2014/04/07
 APPR: F SMITH 2014/07/28

QUALITY SYMBOLS	DESCRIPTION
$\nabla=0$	
$\nabla=0$	
$\nabla=0$	

GENERAL TOLERANCES (UNLESS SPECIFIED)	
	mm
4 PLACES	± .010
3 PLACES	± .015
2 PLACES	± .025
1 PLACE	± .038
0 PLACE	±
ANGULAR ±1/2°	
DRAFT WHERE APPLICABLE MUST REMAIN WITHIN DIMENSIONS	

DIMENSION STYLE	
MM/IN	
DRAWN BY	DATE
JSCHAFER	11-07-03
CHECKED BY	DATE
KSAMIEC	11-10-03
APPROVED BY	DATE
MARGULIS	11-17-03
MATERIAL NO.	
SEE CHART	
SIZE	
B	

SCALE	DESIGN UNITS	THIRD ANGLE PROJECTION	
2:1	INCH		
TITLE			
KK 156 HEADER ASSEMBLY FRICTION LOCK VERTICAL SOLID BODY W/O PEGS			
molex			
DOCUMENT NO.		SHEET NO.	
SDA-41791		1 OF *	
THIS DRAWING CONTAINS INFORMATION THAT IS PROPRIETARY TO MOLEX INCORPORATED AND SHOULD NOT BE USED WITHOUT WRITTEN PERMISSION			