

## Features

- Frequency Range: 10~1000MHz
- Active Bias Design Supply Temperature Compensation
- Standard Hermetic Package
- Operating Temperature Range: -55°C ~ +85°C

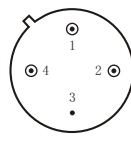
## Specifications (50 Ω, V<sub>CC</sub> = +15V, T<sub>A</sub> = -55°C ~ +85°C)

Parameter	Symbol	Unit	Guaranteed	Typical
Frequency Range	f <sub>L</sub> ~f <sub>H</sub>	MHz	10~1000	--
Gain	G <sub>p</sub>	dB	≥18.0	19.0
Gain Flatness	ΔG <sub>p</sub>	dB	≤±1.0	±0.5
Noise Figure	F <sub>n</sub>	dB	≤4.0 Δ	--
Input VSWR	VSWR <sub>i</sub>	--	≤2.0:1	1.8:1
Output VSWR	VSWR <sub>o</sub>	--	≤2.0:1	--
Output Power @ 1dB Compression	P-1	dBm	≥0 * Δ	1.0
DC Current	I <sub>cc</sub>	mA	--	38

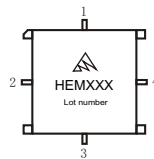
- 1) "\*"f = 200MHz; "Δ" T<sub>A</sub> = 24 ± 1°C;
- 2) The G<sub>p</sub> and P-1 will be reduced 1dB and 2dB respectively under operating at 12VDC (I<sub>cc</sub> = 32mA Typ).

## Maximum Rating

DC Voltage : +17VDC  
RF Input: +10dBm  
Storage Temp: +125°C



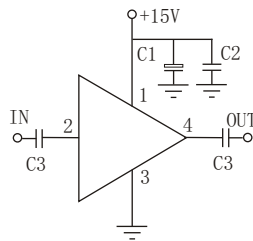
TO-8A



SMO-8C

## Application Notes

1. Typical application shown as right, C<sub>1</sub> = 3.3~22 μF; C<sub>2</sub> = 3300~6800pF; C<sub>3</sub> = 1000pF;
2. Interchanged directly with A-12 from W-J Company;
3. See assembly section for mounting information
4. Connectorized package(SMA-1) available



## Typical Curves

