



Specifications Sheet

Object	External Dipole Antenna	Page	1 of 7
Customer		Date	August 19, 2005
System	WLAN/ Bluetooth/ Zigbee	Rev.	B
Model Name	W5E-WO-03	Written by	

Electrical Specifications

Frequency Range (MHz)	2400 ~ 2483.5
Band Width (MHz)	83.5
V.S.W.R (Min)	1.9 : 1
Gain (Max)	3 ± 0.5 (dBi)
Input Impedance	50 (Ω)
Polarization	Linear

Mechanical Specifications

Antenna Size (Length x Diameter)	102.8 × 11 mm
Weight	12.5 ± 2 g
Radiator Material	Copper
Operation Temperature	- 20 ~ 70 (°C)
Operation Humidity	10 ~ 90 (%)

Option	
Remarks	

WINiZEN Co., Ltd.

Fig 1. Return Loss (Agilent E8357A 300KHz~6GHz PNA Series Network Analyzer)



Fig 2. V.S.W.R (Agilent E8357A 300KHz~6GHz PNA Series Network Analyzer)

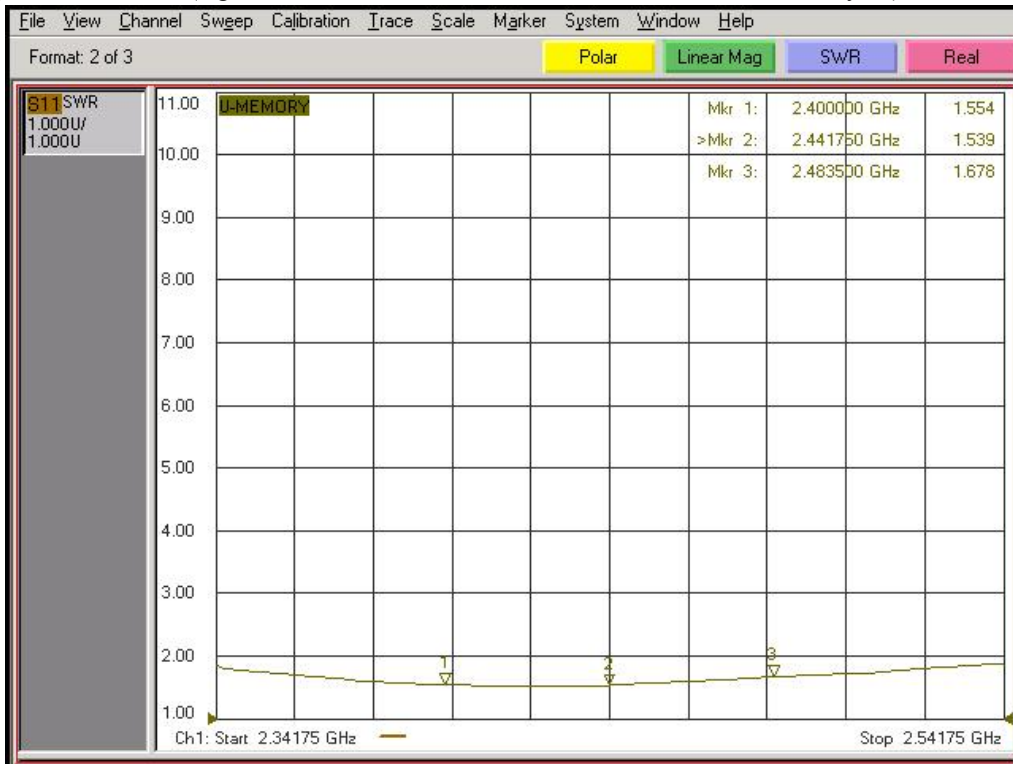


Fig 3. Smith Chart (Agilent E8357A 300KHz~6GHz PNA Series Network Analyzer)

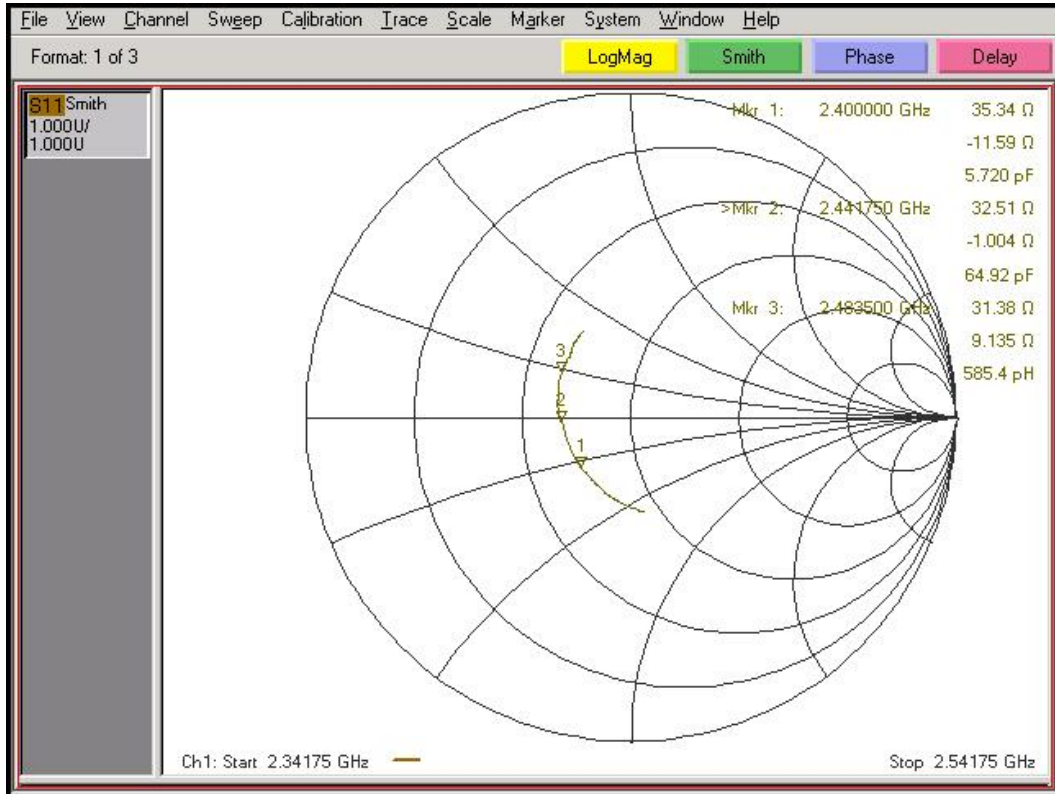


Fig 4. Measurement Configuration

(Hewlett Packard 8722ES 50 MHz ~ 40 GHz S-Parameter Network Analyzer)

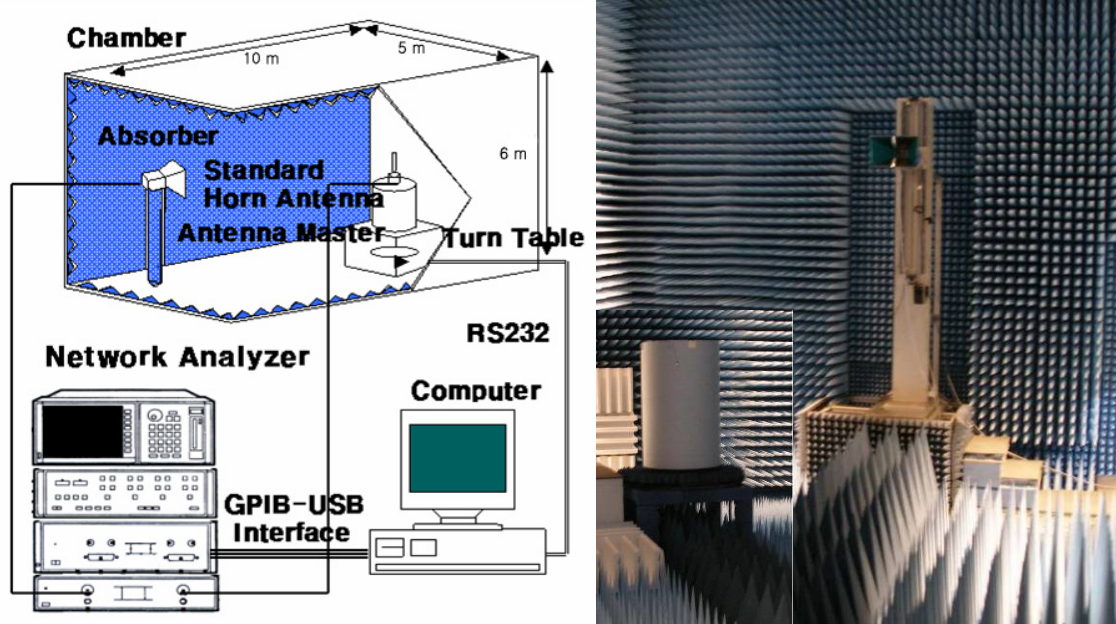


Fig 5. Axis Definitions (Antenna Center)

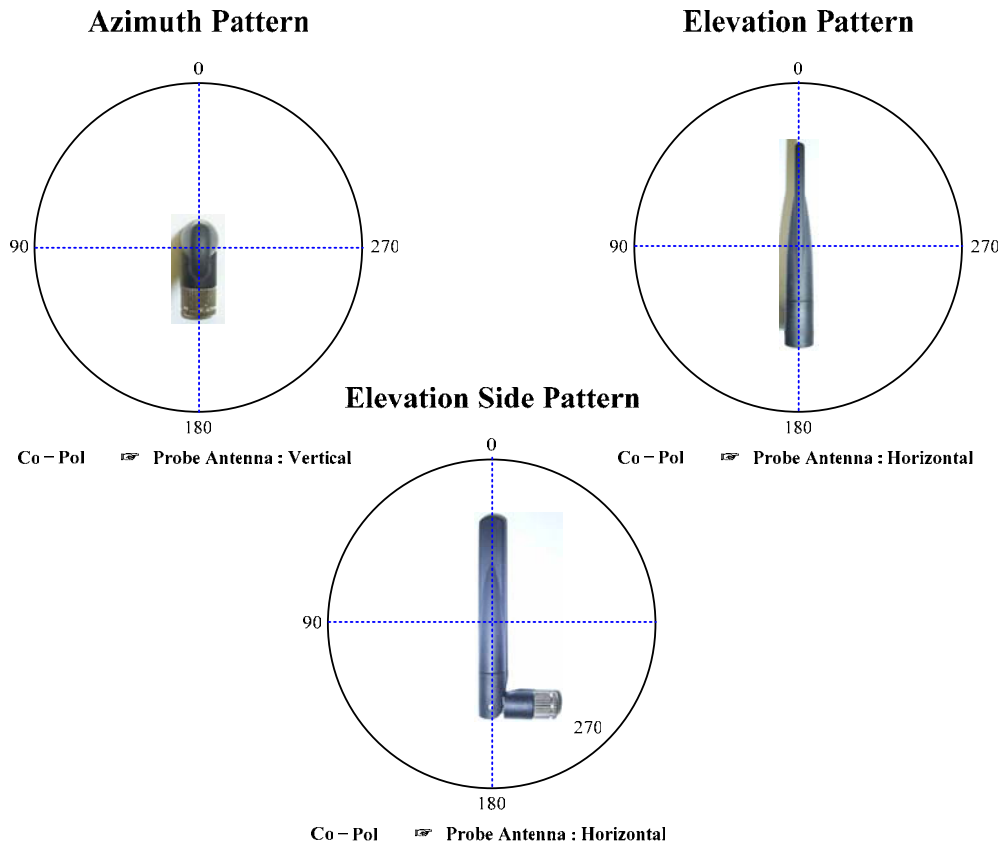
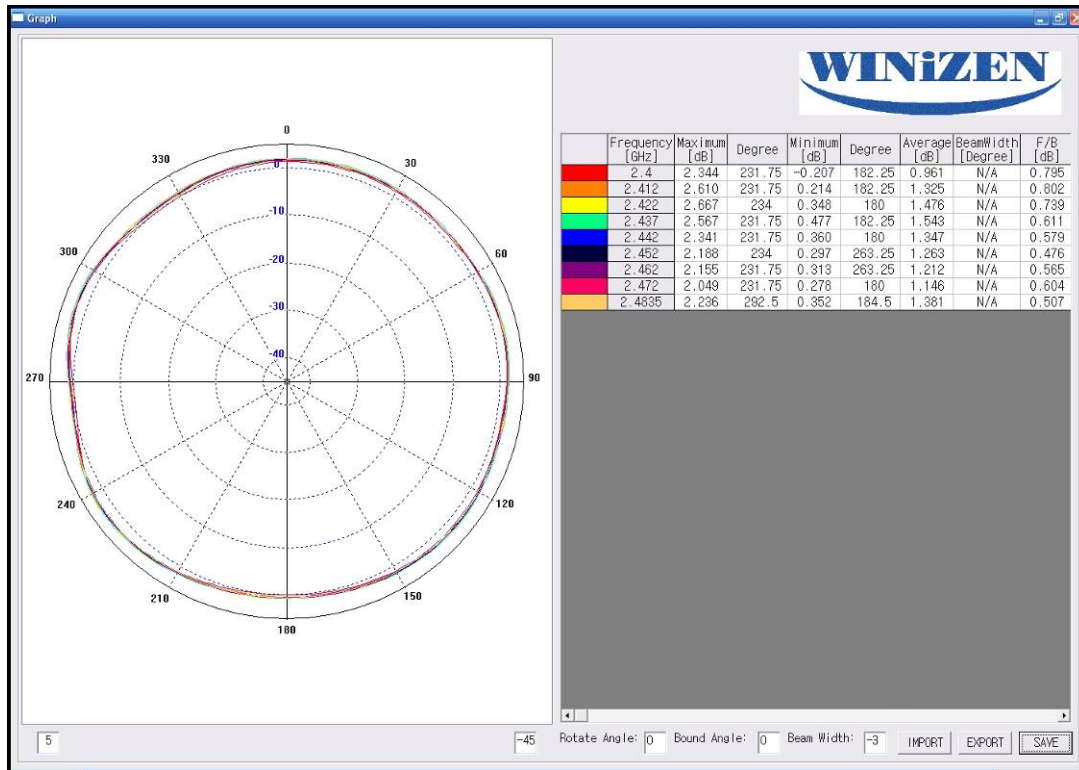
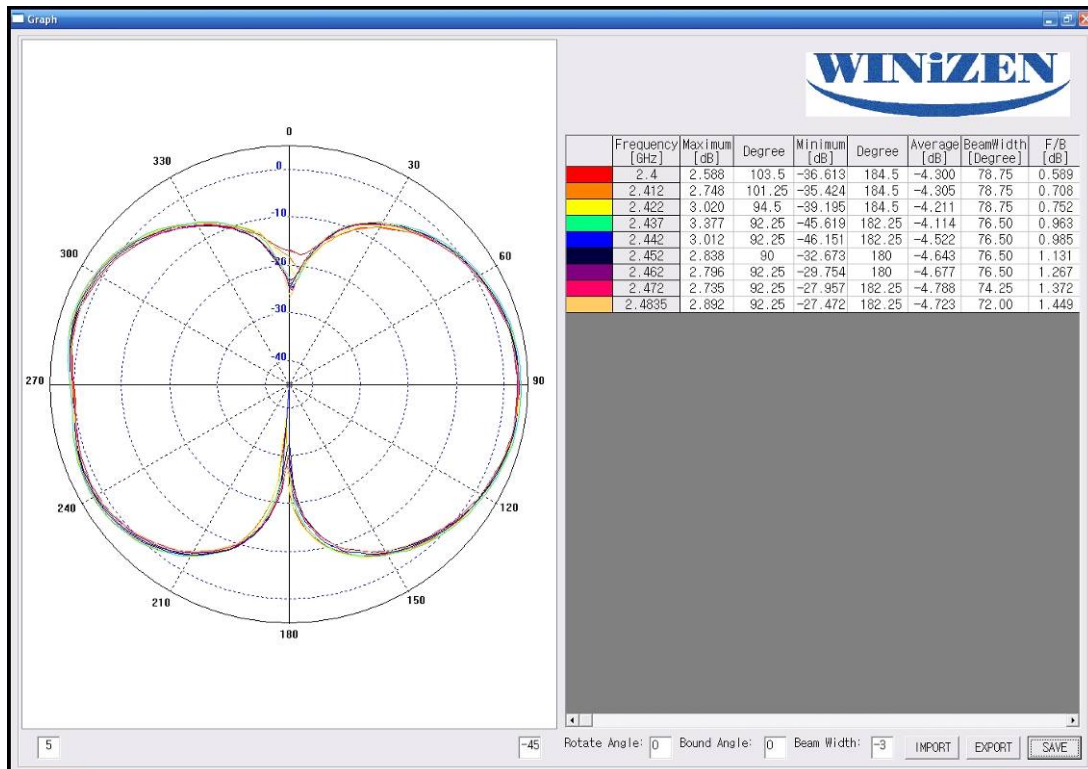


Fig 6. Gain Patterns

a. Azimuth Pattern



b. Elevation Pattern





c. Elevation Side Pattern

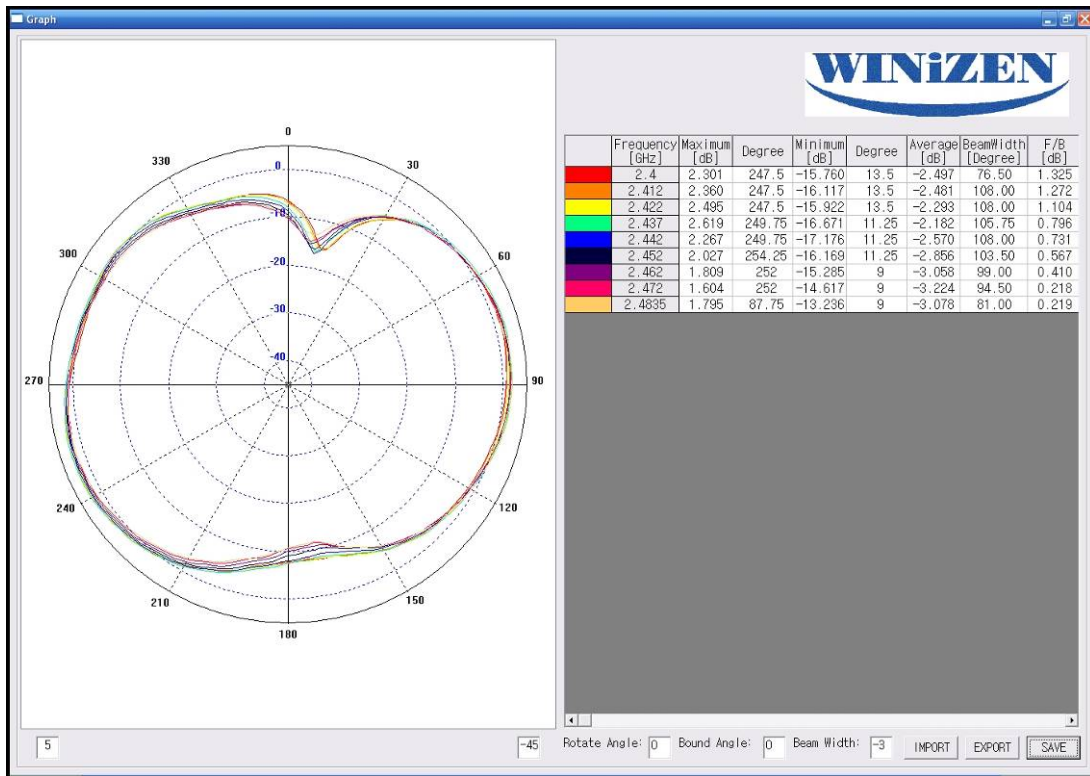
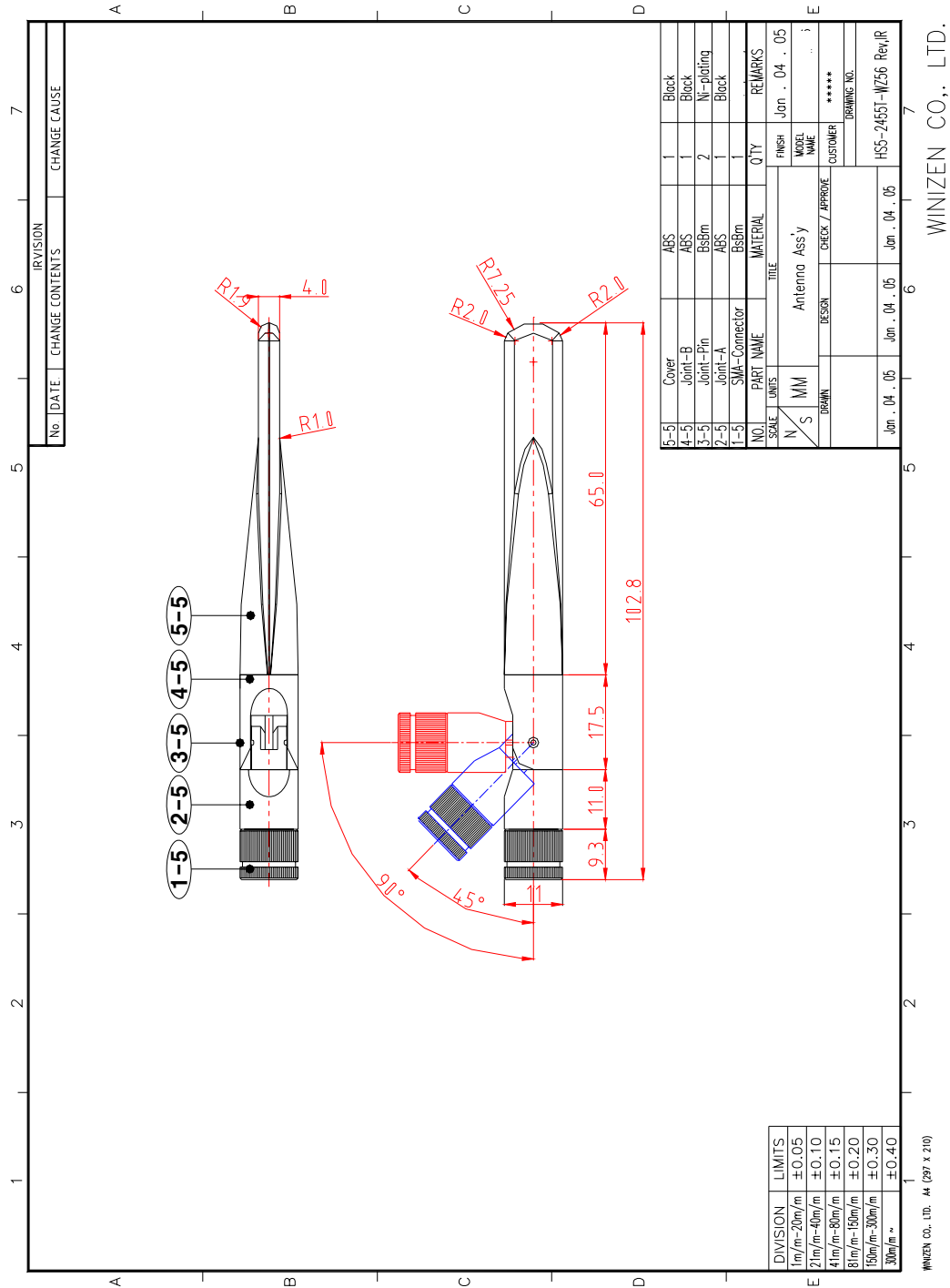


Fig 7. Antenna Mechanical



Mouser Electronics

Authorized Distributor

Click to View Pricing, Inventory, Delivery & Lifecycle Information:

[WIZnet:](#)

[W5E-WO-03L](#)