

FEATURES AND SPECIFICATIONS

Features and Benefits

- Stacking height: 4.0mm
- Sizes 20 to 160 circuits
- Housing lock on 40 to 70 circuits
- Anti-flux design
- Metal solder tabs provide PCB hold down and strain relief for SMT tails
- Polarizing pegs assist placement

Reference Information

Packaging: Tube and embossed tape
 Mates With: 53569
 Designed In: Millimeters

Electrical

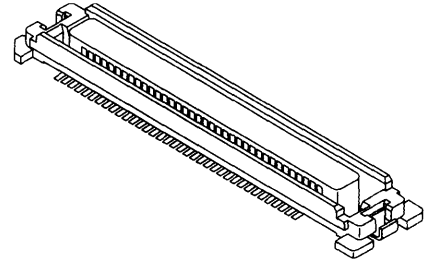
Voltage: 100V
 Current: 0.5A
 Contact Resistance: 40mΩ max.
 Dielectric Withstanding Voltage: 250V AC
 Insulation Resistance: 1000 MΩ min.

Physical

Housing: White glass-filled LCP, UL 94V-0
 Contact: Copper Alloy
 Plating: Gold over Nickel
 Operating Temperature: -55 to +85°C

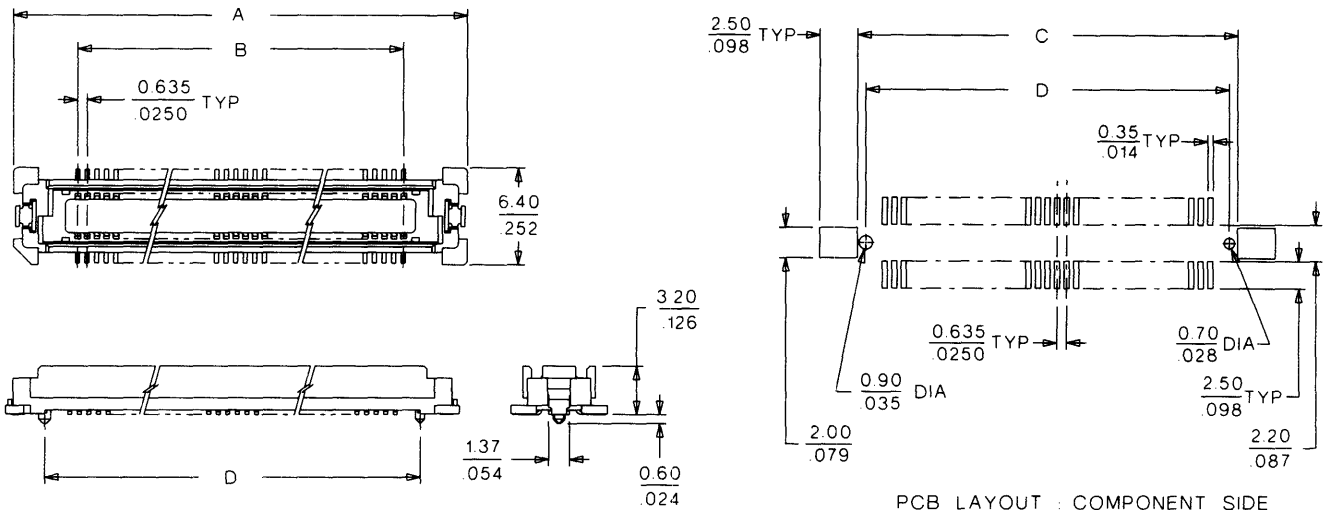
molex® 0.635mm (.025") Pitch Board-to-Board Receptacle

52851/52883 SMT, Dual Row Vertical Stacking



A
 0.40 to 1.60mm (.016 to .063") Pitch

CATALOG DRAWING (FOR REFERENCE ONLY)



ORDERING INFORMATION AND DIMENSIONS

Circuits	Order No.			Dimension			
	Tube	Tube with cover	Embossed Tape with Cover	A	B	C	D
20			52883-0204	14.22 (.560)	5.72 (.225)	10.62 (.418)	9.02 (.355)
40			52883-0404	20.57 (.810)	12.07 (.475)	16.97 (.668)	15.37 (.605)
50		52883-0505	52883-0504	23.75 (.935)	15.24 (.600)	20.15 (.793)	18.55 (.730)
70	52851-0709	52883-0705	52883-0704	30.10 (1.185)	21.59 (.850)	26.50 (1.043)	24.90 (.980)
80		52883-0805	52883-0804	33.27 (1.310)	24.77 (.975)	29.67 (1.168)	28.07 (1.105)
100		52883-1005	52883-1004	39.62 (1.560)	31.12 (1.225)	36.02 (1.418)	34.42 (1.355)
140	52851-1409	52883-1405		52.32 (2.060)	43.82 (1.725)	48.72 (1.918)	47.12 (1.855)
150	52851-1509			55.49 (2.185)	46.99 (1.850)	51.89 (2.043)	50.29 (1.979)
160		52883-1605		58.67 (2.310)	20.17 (.794)	55.07 (2.168)	53.47 (2.105)

Note: Use only one connector per daughterboard in order to insure proper mating alignment

Note: Contact Molex for embossed tape specifications