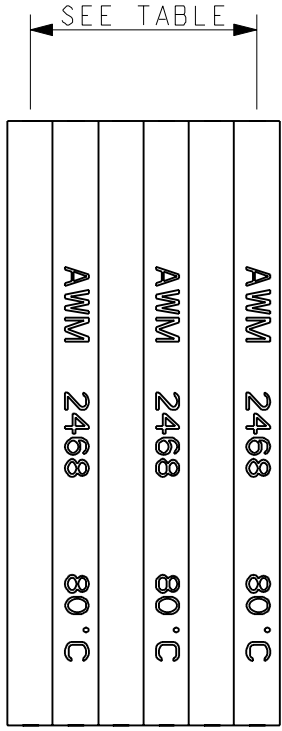
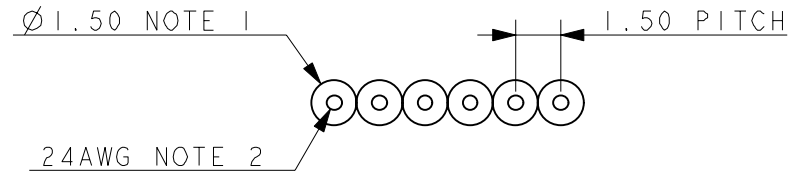


ELCO EUROPE (A DIVISION OF AVX LTD.) CONFIDENTIAL PROPRIETARY
 THE DRAWING ON THIS PRINT AND INFORMATION THEREWITH ARE
 PROPRIETARY TO ELCO EUROPE (A DIVISION OF AVX LTD.) AND
 SHALL NOT BE USED OR DISCUSSED IN WHOLE OR IN PART
 WITHOUT ELCO EUROPE'S WRITTEN CONSENT.



- NOTES :-
1. INSULATION :- WHITE PVC, FLAME RETARDENT VW-1.
 2. CONDUCTION :- 24AWG, TINNED COPPER, 11 STRANDS 0.16mmØ.
 3. NUMBER OF WAYS, SEE TABLE.
 4. MAXIMUM OPERATING TEMPERATURE 80°C.
 5. VOLTAGE RATING 300v.
 6. WIRE TO BE UL2468.
 7. UL MARKING ON ALTERNATE WIRES.
 8. SUPPLIED ON REELS, 305m PER REEL

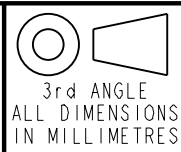
PART NUMBER	NUMBER OF WAYS
90-2220-7360-02-000	2
90-2220-7360-03-000	3
90-2220-7360-04-000	4
90-2220-7360-05-000	5
90-2220-7360-06-000	6



Elco Europe (A Division of AVX Ltd) CONFIDENTIAL PROPRIETY
 The document on this print and information therewith are PROPRIETY
 to Elco Europe (A Division of AVX Ltd) and shall not be copied
 or disclosed in whole or in part without Elco Europe's written consent.

FORM-106-01-056-1 ISS 7

Release No.
 History
 102838
 25.07.2012
 08.08.2012
 28.08.2012



ELCO
 © COPYRIGHT ELCO EUROPE
 NOT TO BE DISCLOSED OR COPIED
 WITHOUT WRITTEN PERMISSION

Drawn
 N.C.H.
 Size
 AV

Description
 RIBBON CABLE - 24AWG
 Part Number
 90-2220-7360-0X-000S

DATE
 25-Jul-12
 Issue
 C

Mouser Electronics

Authorized Distributor

Click to View Pricing, Inventory, Delivery & Lifecycle Information:

[AVX:](#)

[902220736003000](#) [902220736006000](#) [902220736005000](#) [902220736002000](#) [902220736004000](#)