

MATERIALS AND FINISHES

BODY BRASS
PLATED SEE TABLE

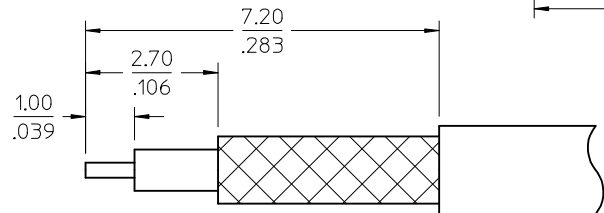
CENTER CONTACT BRASS
PLATED GOLD

INSULATOR TEFLON

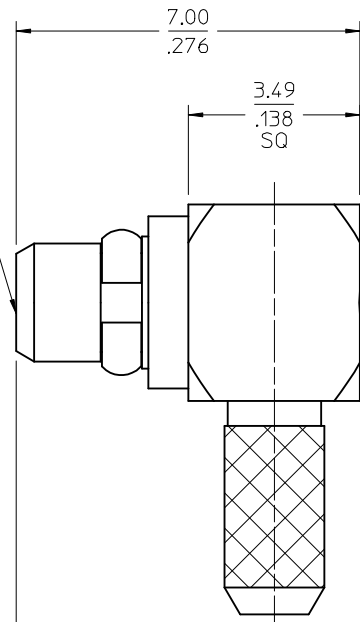
NOTE :
1) 73415-0955 IS FOR
ENHANCED PERFORMANCE.

2)RG178 CABLE OR EQUIVALENT
CRIMPING FORCE 6.5kgf MIN

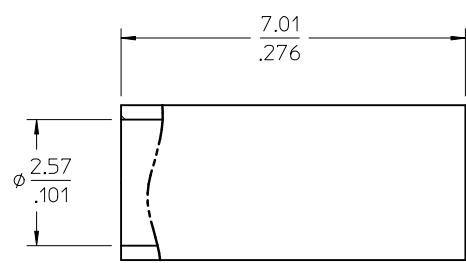
MMCX PLUG
INTERFACE



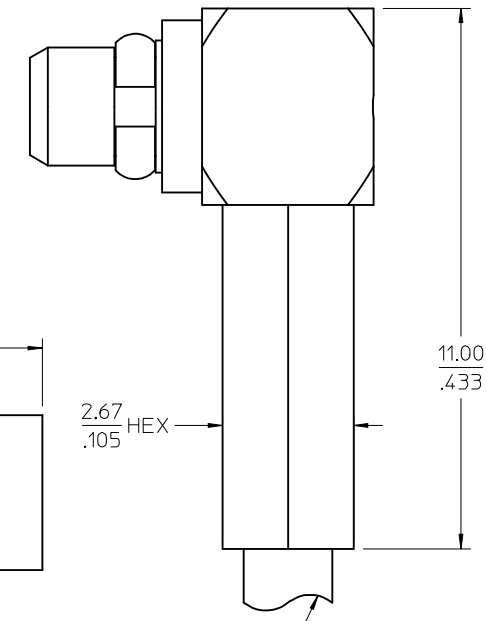
RECOMMENDED STRIP DIMENSIONS



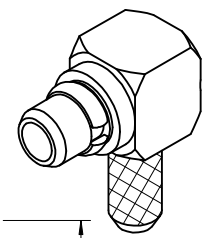
CAP



CRIMP TUBE



RG178 CABLE



73415-0955	GOLD OVER NICKEL PER COMMERCIAL REQUIREMENTS	BULK
73415-0954	GOLD OVER NICKEL PER COMMERCIAL REQUIREMENTS	BULK
73415-0953	GOLD OVER NICKEL PER COMMERCIAL REQUIREMENTS	73415-0951, ONE PER BAG
73415-0952	NICKEL	BULK
73415-0951	GOLD OVER NICKEL PER COMMERCIAL REQUIREMENTS	BULK
73415-0950	GOLD OVER NICKEL PER MILITARY REQUIREMENTS	BULK
PART NO.	PLATING	PACKAGING

AS-89678-070	CABLE ASSY INSTRUCTION
ES-73599-0000-015	INTERFACE
PS-89675-1920	ELECTRO/MECH PERFORM.
SPECIFICATION	DESCRIPTION

CHG: TYPO
AS-89678-070 WAS
AS-89675-0700
EWR RF15-E336

EC NO: 2015/09/21
DRWN: YCHENG
CHKD:
APPR: YCHENG 2015/09/23

DESCRIPTION

REV: 4

QUALITY SYMBOLS

GENERAL TOLERANCES (UNLESS SPECIFIED)

	mm	INCH
4 PLACES	± .005	± .0002
3 PLACES	± .004	± .00015
2 PLACES	± .003	± .0001
1 PLACE	± .002	± .00008

ANGULAR ± 2 °

DRAFT WHERE APPLICABLE
MUST REMAIN
WITHIN DIMENSIONS

DIMENSION STYLE: MM/IN

SCALE: 1:1

DESIGN UNITS: METRIC

THIRD ANGLE PROJECTION

DRAWN BY: EDC DATE: 1999/01/27

CHECKED BY: EDC DATE: 1999/01/27

APPROVED BY: MHUANG DATE: 2010/02/23

MATERIAL NO. SEE TABLE

TITLE: MMCX PLUG 50 OHMS R/A FOR RG178 CABLE MMCX-P/RG178

MOLEX INCORPORATED

DOCUMENT NO. SD-73415-095

SHEET NO. 1 OF 1

THIS DRAWING CONTAINS INFORMATION THAT IS PROPRIETARY TO MOLEX INCORPORATED AND SHOULD NOT BE USED WITHOUT WRITTEN PERMISSION