

RIB-CAGE™

1.27mm (0.050 in.) Pitch Board-to-Board Connector System for Extreme Applications

DESCRIPTION

Rib-Cage™ connectors provide optimal precision and reliability at a competitive commercial cost.

Rib-Cage™ connectors meet high performance standards for use in applications with shock and vibration.

The versatile Rib-Cage™ system includes dual-row, pin-and-socket connectors for right-angle and mezzanine connections between printed circuit boards (PCB) or flexible printed circuits (FPC).



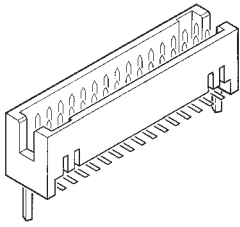
FEATURES & BENEFITS

- Exclusive Rib-Cage™ multi-point, gold plated receptacle contacts provide optimal reliability in high vibration and shock-prone applications
 - MIL-STD-202 Method 204
 - IEC 60512 Test 6d
- High density 1.27mm (.050 in.) x 1.27mm (.050 in.) double row contact grid occupies only 20% of the volume of comparable .100 in. pitch systems
- Multiple stack height options offer flexibility for mezzanine connection designs
- Polarization prevents mis-mating
- Multiple PCB positioning and PCB attachment options suit customer assembly requirements
- Available sizes: 10 through 100 total positions
- Lead-free, RoHS compatible plating satisfies environmental regulations

TARGET MARKETS / APPLICATIONS

- Handheld test and diagnostic equipment
- Outdoor test and measurement devices
- Military communications equipment
- Security systems and Access Control
- Point-of-sale terminals
- Electronic sub-assemblies used in conjunction with fans, motors and mechanical devices

VERTICAL HEADER WITH SURFACE-MOUNT ATTACHMENT



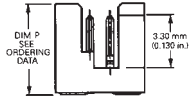
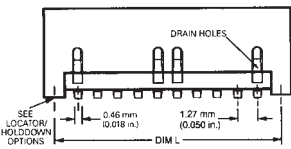
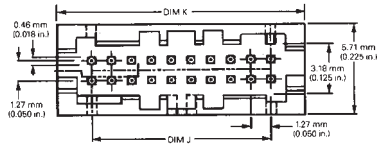
Base number specifies surface-mount vertical shrouded header configuration

□ □ □ □ □ - 1 X X L F

Lead-Free indicator

Dash number specifies contact finish (1 = 0.76 µm (30 µin.) gold or GXT) and number of positions per row (5 through 50 in increments of 5)

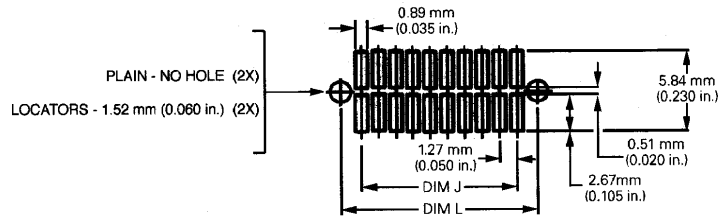
Base Part Number



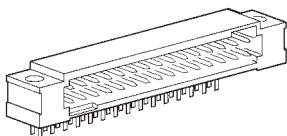
Optional Feature	Connector Height = DIM. P					
	mm	in.	mm	in.	mm	in.
Plain	5.74	0.226	7.57	0.298	9.25	0.364
Locators	87849		93221		73546	
	87409		90098		73547	

Note 1 - Refer to composite drawing 95781 for availability of tape packaging.
 Note 2 - Locators are the same as those indicated in the SMT receptacle section.

Dash Number	Size	L		J		K	
		mm	in.	mm	in.	mm	in.
105	2 x 5	8.13	0.320	5.08	0.200	9.45	0.372
110	2 x 10	14.48	0.570	11.43	0.450	15.80	0.622
115	2 x 15	20.83	0.820	17.78	0.700	22.15	0.872
120	2 x 20	27.18	1.070	24.13	0.950	28.50	1.122
125	2 x 25	33.53	1.320	30.48	1.200	34.85	1.372
130	2 x 30	39.88	1.570	36.83	1.450	41.20	1.622
135	2 x 35	46.23	1.820	43.18	1.700	47.55	1.872
140	2 x 40	52.58	2.070	49.53	1.950	53.90	2.122
145	2 x 45	58.93	2.320	55.88	2.200	60.25	2.372
150	2 x 50	65.28	2.570	62.23	2.450	66.60	2.622



RIGHT-ANGLE HEADER WITH THROUGH-HOLE ATTACHMENT

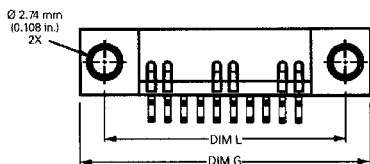
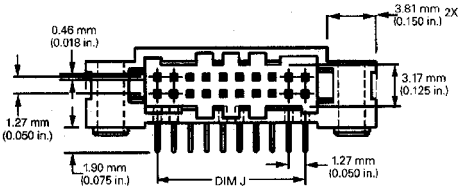


Base number specifies Through-hole, right angle shrouded header configuration

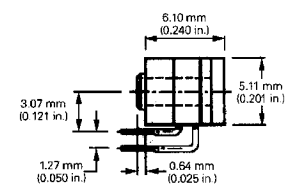
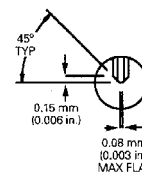
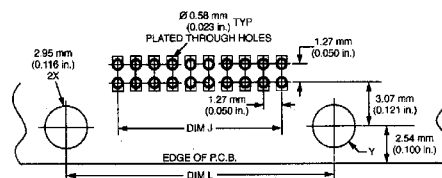
8 7 4 0 2 - 1 X X L F

Lead-Free indicator

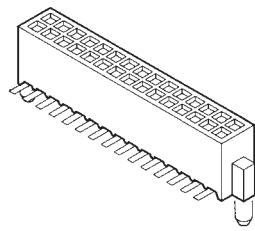
Dash number specifies contact finish (1 = 0.76 µm (30 µin.) gold or GXT) and number of positions per row (5 through 50 in increments of 5)



Dash Number	Size	G		J		L	
		mm	in.	mm	in.	mm	in.
105	2 x 5	6.13	0.635	5.08	0.200	12.35	0.485
110	2 x 10	22.48	0.885	11.43	0.450	18.67	0.735
115	2 x 15	28.83	1.135	17.78	0.700	25.02	0.985
135	2 x 35	54.23	2.135	43.18	1.700	50.42	1.985
140	2 x 40	60.58	2.385	49.53	1.950	56.77	2.235
145	2 x 45	66.93	2.635	55.88	2.200	63.12	2.485
150	2 x 50	73.28	2.885	62.23	2.450	69.47	2.735



VERTICAL RECEPTACLE WITH SURFACE-MOUNT ATTACHMENT



□ □ □ □ □ - 6 X X L F

Base number specifies surface-mount vertical receptacle configuration

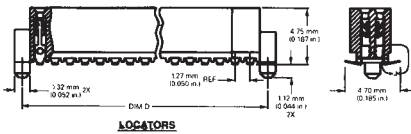
Lead-Free indicator

Dash number specifies contact finish (6 = 0.76 μm (30 μin.) gold or GXT) and number of positions per row (5 through 50 in increments of 5)

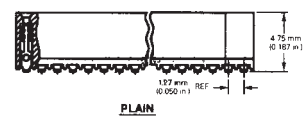
Base Part Number

Optional Features	Non-Polarized	Polarized
Plain	87021	87022
Locators	87023	87024

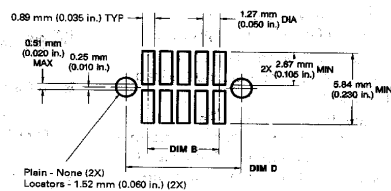
Note 1 - Refer to product drawing for availability of tape and reel packaging.



LOCATORS



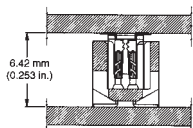
PLAIN



Dash Number	Size	A		B		C		D	
		mm	in.	mm	in.	mm	in.	mm	in.
605	2 x 5	6.756	0.266	5.080	0.200	9.398	0.370	8.128	0.320
610	2 x 10	13.106	0.516	11.430	0.450	15.748	0.620	14.478	0.570
615	2 x 15	19.456	0.766	17.780	0.700	22.098	0.870	20.828	0.820
620	2 x 20	25.806	1.016	24.130	0.950	28.448	1.120	27.178	1.070
625	2 x 25	32.156	1.266	30.480	1.200	34.798	1.370	33.528	1.320
630	2 x 30	38.506	1.516	36.830	1.450	41.148	1.620	39.878	1.570
635	2 x 35	44.856	1.766	43.180	1.700	47.498	1.870	46.228	1.820
640	2 x 40	51.206	2.016	49.530	1.950	53.848	2.120	52.578	2.070
645	2 x 45	57.556	2.266	55.880	2.200	60.198	2.370	58.928	2.320
650	2 x 50	63.906	2.516	62.230	2.450	66.548	2.620	65.278	2.570

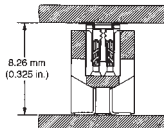
STACK HEIGHT GUIDANCE

Surface-Mount Header 5.74 mm (0.226 in.)



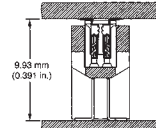
SURFACE-MOUNT RECEPTACLE TO 5.74 mm (0.226 in.) TALL SURFACE-MOUNT HEADER

Surface-Mount Header 7.57 mm (0.298 in.)



SURFACE-MOUNT RECEPTACLE TO 7.57 mm (0.298 in.) TALL SURFACE-MOUNT HEADER

Surface Mount Header 9.25mm (0.364 in.)



SURFACE-MOUNT RECEPTACLE TO 9.25 mm (0.364 in.) TALL SURFACE-MOUNT HEADER



MATERIALS

- Housings: Glass-filled thermoplastic, UL 94 V-O, Black or Natural color; Temperature Range: -55C to +130C
- Contact Base Metal, PCB Receptacles: Copper Alloy, High Spring
- Contact Base Metal, PCB Pin Headers: Phosphor Bronze
- Contact Plating: 30u (0.76um) Gold/GXT over Nickel in Contact area; 100u (2.54um) lead-free pure tin over Nickel on solder tails

ELECTRICAL PERFORMANCE

- Contact resistance (LLCR): 20 mΩ max initial; 25 mΩ max after environmental test
- Current Rating: 1.0 amp DC per contact with all contacts energized (30 deg C Temp. Rise)
- Insulation Resistance: 50,000 MΩ min initial
- Withstanding Voltage: 800 VAC, RMS at 60 Hz
- Capacitance: 1.0 pf max. between pairs of adjacent or opposing contacts, un-mated connector

MECHANICAL PERFORMANCE

- Mating force: 157g (5.5oz) max per contact
- Unmating force: 43g (1.5oz.) min per contact
- Contact durability: 200 mating cycles
- Shock and Vibration: Per MIL-STD-202 Method 204 and IEC 60512 Test 6d
 - Shock: 50G 11ms half sine
 - Vibration: +/- 20G, 10 to 2000 Hz

PACKAGING

- Antistatic tubes or Tape and Reel / Pick-up Caps. Packaging options vary by part number. Consult print on website and verify with FCI.

TECHNICAL DOCUMENTS

- Product Specification: BUS-12-087
- Application Specification: BUS-20-052
- Application Drawing: TA-901

ADDITIONAL INFORMATION

- For updates and details, see prints and specifications at www.fci.com



Choose precisely what you need from FCI's MezzSelect™ product portfolio.

In-line and array-configured connectors satisfy a wide range of low-to-high pin count and low-to-high speed applications in many electronics segments.

The MezzSelect™ Connector Family is supported by simple, powerful web-based design tools and other resources to help customers expedite connector design work and improve time-to-market.

www.mezzselect.com

Additional information can be found at www.fci.com/ribcage

Mouser Electronics

Authorized Distributor

Click to View Pricing, Inventory, Delivery & Lifecycle Information:

[FCI:](#)

[87023-615TR](#) [73547-105](#) [73547-115](#) [73547-125](#) [73547-140](#) [87021-610TR](#) [87021-610TRLF](#) [87022-625TR](#) [87024-610P](#) [87409-125TR](#) [87409-130TR](#) [87409-140CTLF](#) [87409-140TR](#) [87849-125TR](#) [91036-110P](#) [92074-630CTLF](#) [87021-606](#) [87021-610](#) [87021-630](#) [87021-645](#) [87021-650](#) [87022-645](#) [87024-645](#) [87407-110](#) [87407-145](#) [87849-135](#) [87849-140](#) [87849-145](#) [90098-115](#) [90098-125](#) [90098-135](#) [91036-105](#) [91036-135](#) [93289-105](#) [93289-110](#) [93289-115](#) [93289-120](#) [93289-125](#) [93289-130](#) [93289-135](#) [93289-145](#)