

Regina reflector for CREE XP-G/E LEDs



- Designed & optimized for Cree's XP-G series of LEDs, works very well with XP-E, too.
- Reflector material metallized PC. with high UV and temperature resistance (130°C/220°F). Allows use of high current and temperature conditions
- Best available optical efficiency, over 90%
- Small position pins, fastening to heat sink with droplets of glue.
- Compact dimensions 19mm x 15.3 mm (+ position pins 2.5mm)

LENS TYPES

| NAME | ORDERING CODE | FWHM Angle with XP-E | FWHM Angle with XP-G |
|------------------|---------------|----------------------|----------------------|
| Regina reflector | C11347_Regina | ±4 | ±5° |



XP-E

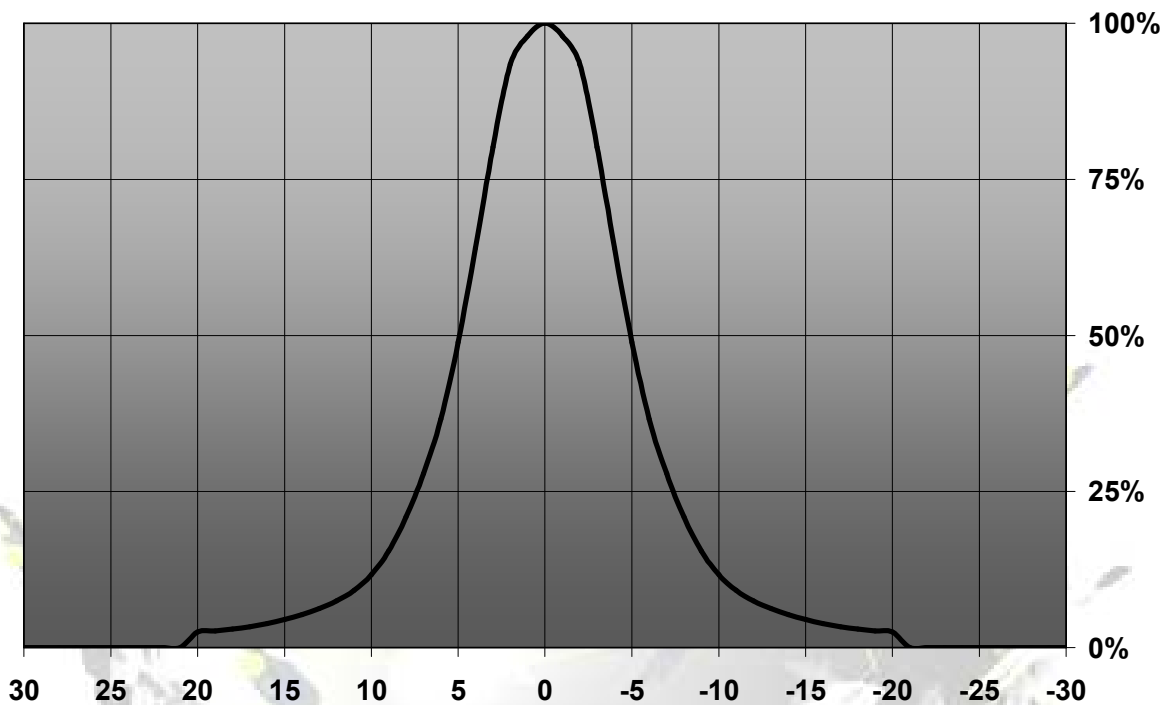


XP-G

© Ledil Oy – PRELIMINARY - Subject to change without prior notice

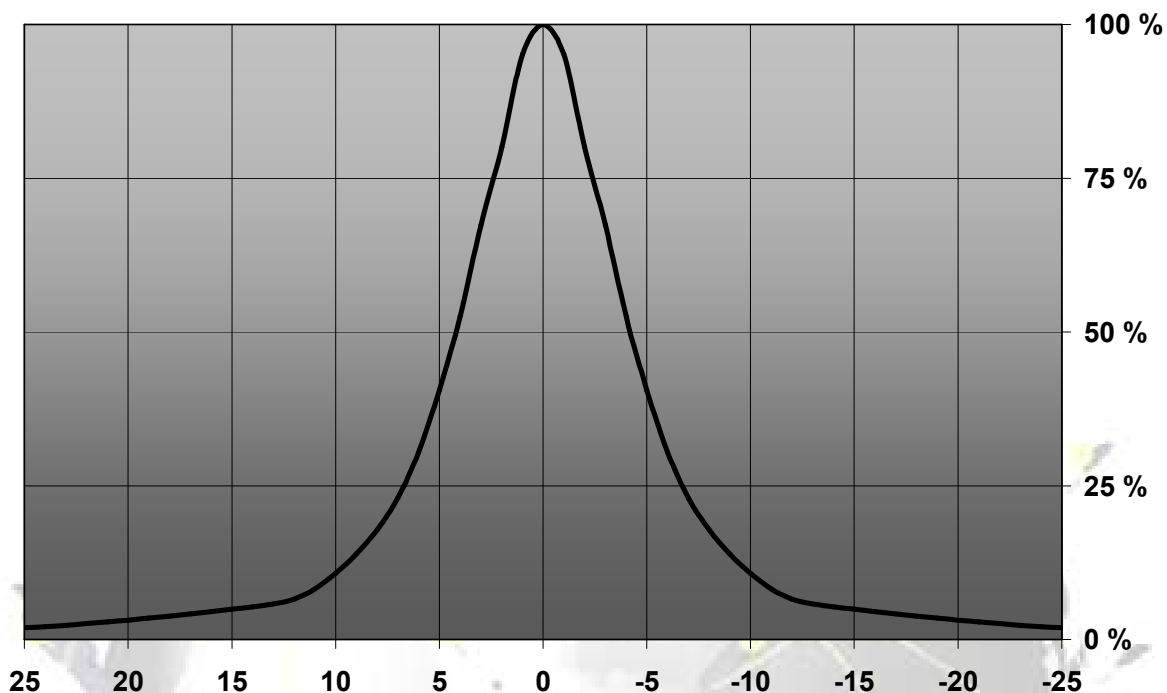
MEASUREMENTS

Relative Intensity of C11347_Regina



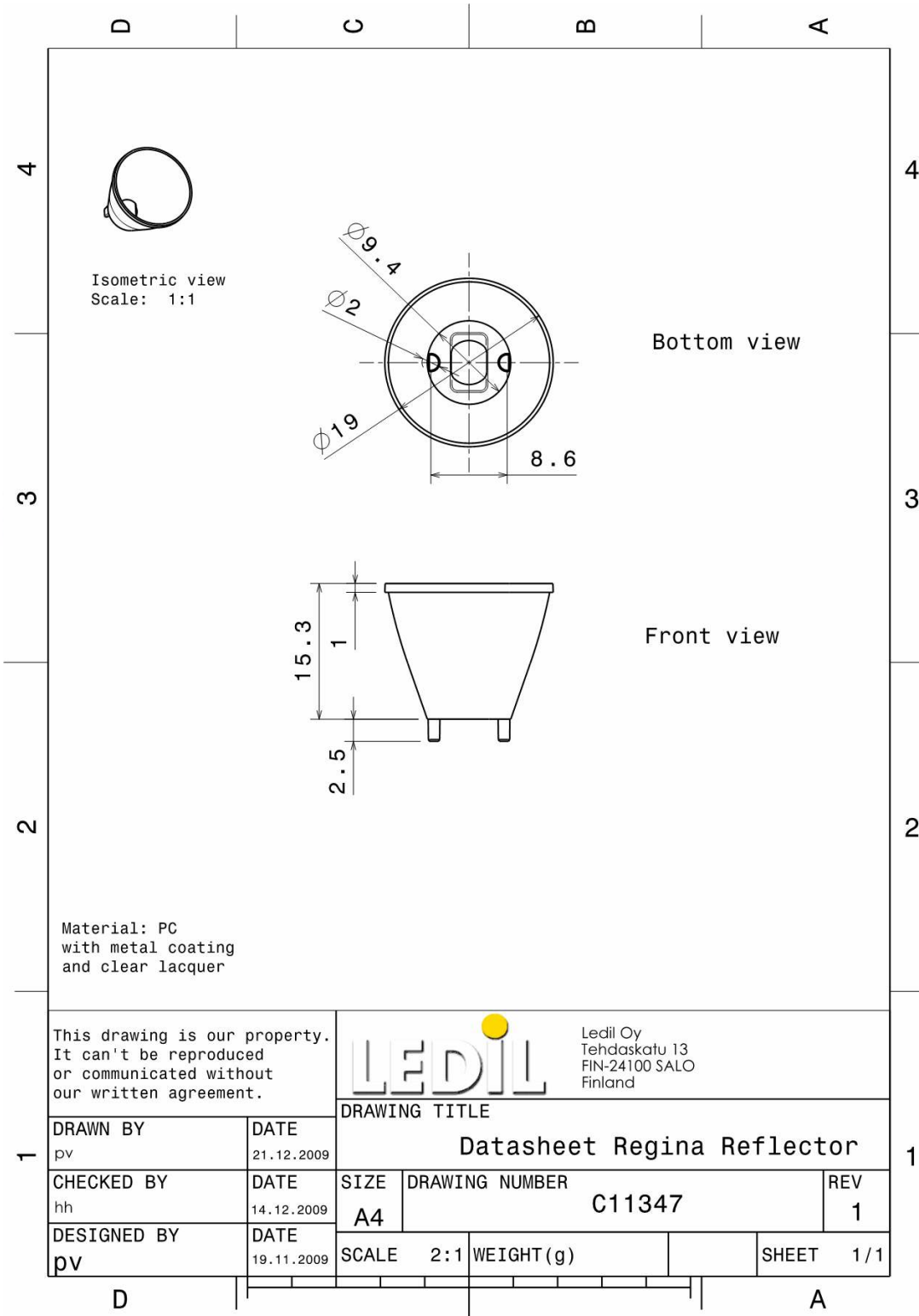
© Ledil Oy – PRELIMINARY - Subject to change without prior notice

Relative Intensity of C11347_Regina-XP-E



© Ledil Oy – PRELIMINARY - Subject to change without prior notice

DRAWINGS



© Ledil Oy - PRELIMINARY - Subject to change without prior notice

Mouser Electronics

Authorized Distributor

Click to View Pricing, Inventory, Delivery & Lifecycle Information:

[Ledi:](#)

[C11347_REGINA](#)