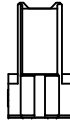
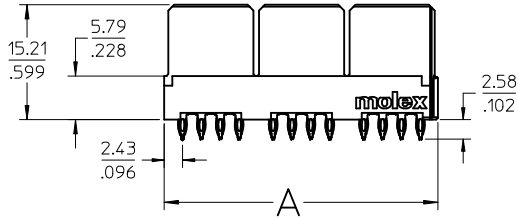
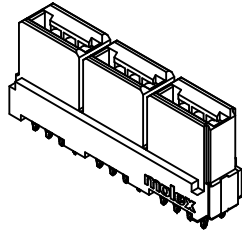
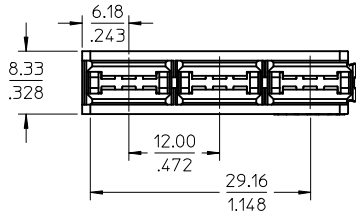


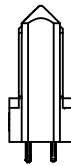
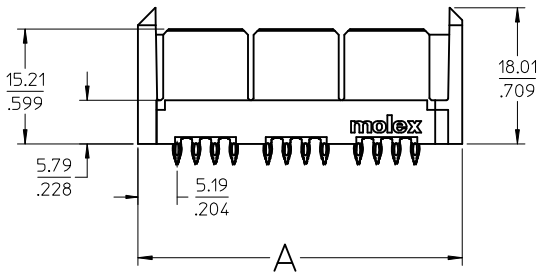
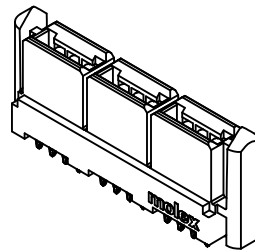
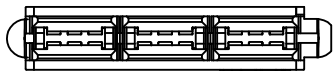
P/N 46112-601 SHOWN



NOTES:

1. MATERIAL: HOUSING: LCP, 94-V0, COLOR: BLACK.
POWER CONTACTS: COPPER ALLOY.
SIGNAL CONTACTS: MODIFIED TIN BRASS.
2. FINISH: SELECT GOLD - 0.75 μ M/30 μ INCHES
SELECTED TIN - 1.91 μ M/75 μ INCHES
OR SELECTED TIN-LEAD - 1.91 μ M/75 μ INCHES
BOTH OVER NICKEL - 1.25 μ M/50 μ INCHES
3. POWER CONTACTS ARE LUBRICATED IN CONTACT AREA.
4. PARTS ARE RoHS COMPLIANT.
5. MATES TO MOLEX P/N 45985-SERIES OR EDGE CARD 1.57/.062.
6. PRODUCT SPECIFICATION PS-46114-001.
7. PACKAGING: PER PK-46114-003.

P/N 46112-603 SHOWN



POWER HOUSING ASSY W/ INTERLOCK

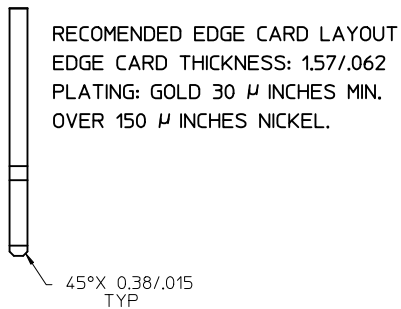
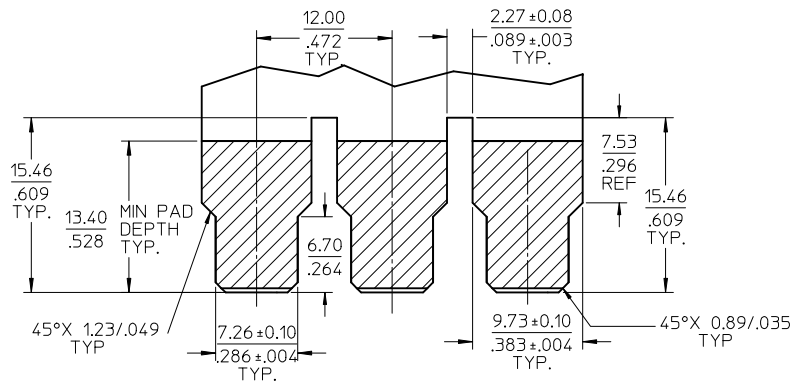
NO OF CKT	MATERIAL NUMBER	COMPLIANT PIN PLATING	DIM A	DIM B SEE SHT 2	DIM C SEE SHT 2
2	46112-0201	TIN	12.24/1.482	12.75/1.502	2.69/1.106
	46112-0205	TIN-LEAD			
4	46112-0401	TIN	24.24/1.954	24.74/1.974	
	46112-0405	TIN-LEAD			
6	46112-0601	TIN	36.24/1.427	36.75/1.447	
	46112-0605	TIN-LEAD			
8	46112-0801	TIN	48.24/1.899	48.74/1.919	
	46112-0805	TIN-LEAD			
10	46112-1001	TIN	60.24/2.372	60.76/2.392	
	46112-1005	TIN-LEAD			
12	46112-1201	TIN	75.00/2.953	75.51/2.973	
	46112-1205	TIN-LEAD			
14	46112-1401	TIN	84.24/3.317	84.76/3.337	
	46112-1405	TIN-LEAD			

POWER HOUSING ASSY WITH (2) GUIDES

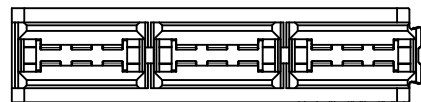
NO OF CKT	MATERIAL NUMBER	COMPLIANT PIN PLATING	DIM A	DIM B	DIM C
2	46112-0203	TIN	18.94/1.746	19.46/1.766	5.45/1.215
	46112-0206	TIN-LEAD			
4	46112-0403	TIN	30.94/1.218	31.45/1.238	
	46112-0406	TIN-LEAD			
6	46112-0603	TIN	42.94/1.691	43.46/1.711	
	46112-0606	TIN-LEAD			
8	46112-0803	TIN	54.94/2.163	55.45/2.183	
	46112-0806	TIN-LEAD			
10	46112-1003	TIN	66.94/2.635	67.44/2.655	
	46112-1006	TIN-LEAD			
12	46112-1203	TIN	78.94/3.108	79.45/3.128	
	46112-1206	TIN-LEAD			
14	46112-1403	TIN	90.94/3.580	91.44/3.600	
	46112-1406	TIN-LEAD			

PRESS-FIT ADDED EC NO: UCP2010-1199 DRW: KAKRADI/MAS 2009/11/30 CHKD: JCOMERC I 2009/12/03 APPR: JCOMERC I 2009/12/08	DESCRIPTION REV: C3	GENERAL TOLERANCES (UNLESS SPECIFIED)		DIMENSION STYLE IN/MM		SCALE 2:1	DESIGN UNITS INCH	THIRD ANGLE PROJECTION		
		4 PLACES ± .010	3 PLACES ± .010	2 PLACES ± 0.25	1 PLACE ± .010	mm	INCH	DRAWN BY _____ DATE _____		
		ANGULAR ± 1/2°				CHECKED BY _____ DATE _____		TITLE LPH VERTICAL RECEPTACLE POWER ASSEMBLY 2 CKT-14 CKT, PRESS-FIT (C3)		
		DRAFT WHERE APPLICABLE MUST REMAIN WITHIN DIMENSIONS				APPROVED BY JCOMERC I DATE 2009/12/03		MOLEX MOLEX INCORPORATED		
						MATERIAL NO. SEE CHART		DOCUMENT NO. SD-46112-200		SHEET NO. 1 OF 2

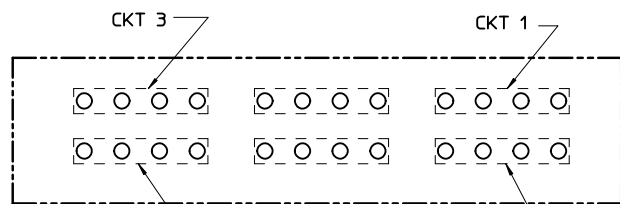
THIS DRAWING CONTAINS INFORMATION THAT IS PROPRIETARY TO MOLEX INCORPORATED AND SHOULD NOT BE USED WITHOUT WRITTEN PERMISSION



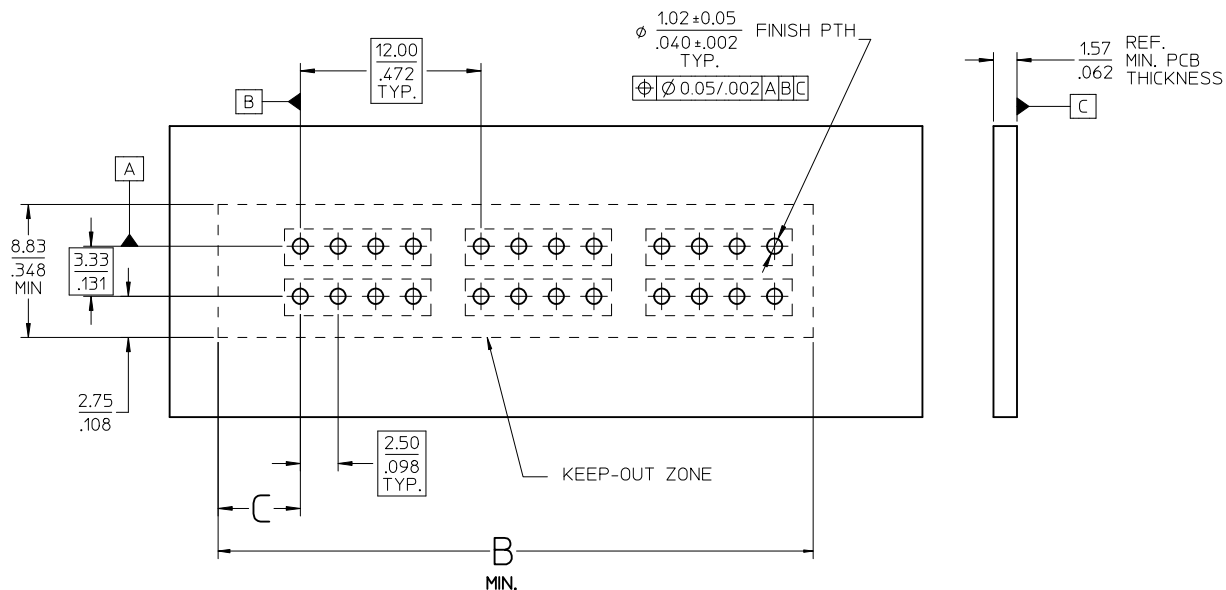
RECOMENDED EDGE CARD LAYOUT
 EDGE CARD THICKNESS: 1.57/.062
 PLATING: GOLD 30 μ INCHES MIN.
 OVER 150 μ INCHES NICKEL.



P/N 46112-601 SHOWN



PCB LAYOUT: COMPONENT SIDE
 SCALE 4:1



PCB COMPONENT SIDE
 SCALE 4:1

SEE SHT 1 IEC NO: UCP2010-1199 DRAWN: MKRADI/MS 2009/11/30 CHKD: JCOMERC I 2009/12/03 APPR: JCOMERC I 2009/12/08	DESCRIPTION	GENERAL TOLERANCES (UNLESS SPECIFIED)		DIMENSION STYLE IN/MM		SCALE 3:1	DESIGN UNITS INCH	THIRD ANGLE PROJECTION		
		4 PLACES ± --- ± ---	mm INCH	DRAWN BY	DATE	TITLE LPH VERTICAL RECEPTACLE POWER ASSEMBLY				
		3 PLACES ± --- ± .010		CHECKED BY	DATE	2 CKT-14 CKT, PRESS-FIT				
		2 PLACES ± 0.25 ± --- 1 PLACE ± --- ± --- ANGULAR ± 1/2°		APPROVED BY JCOMERC I	DATE 2009/12/03	MOLEX INCORPORATED		DOCUMENT NO. SD-46112-200		
DRAFT WHERE APPLICABLE MUST REMAIN WITHIN DIMENSIONS		SEE CHART		MATERIAL NO.		SHEET NO. 2 OF 2				
THIS DRAWING CONTAINS INFORMATION THAT IS PROPRIETARY TO MOLEX INCORPORATED AND SHOULD NOT BE USED WITHOUT WRITTEN PERMISSION										