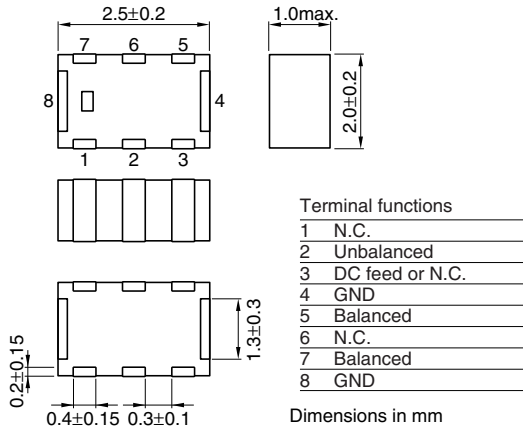


# Multilayer Chip Band Pass Filters(Balance Output Type) Conformity to RoHS Directive

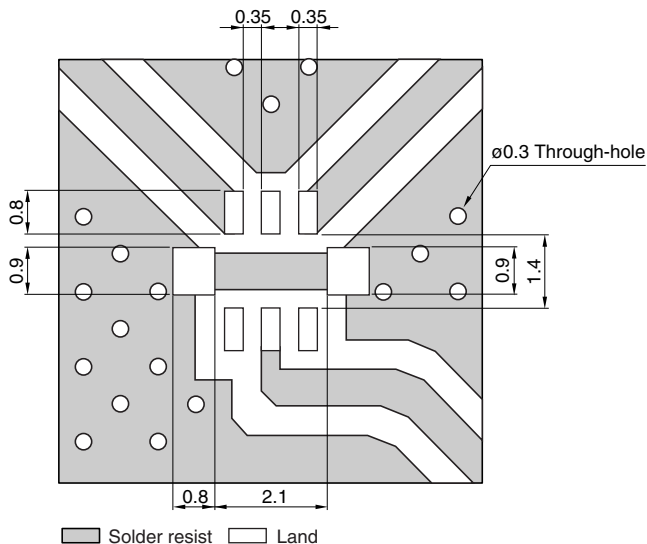
## For Bluetooth & 2.4GHz W-LAN

DEA Series DEA252450BT-7014D1

### SHAPES AND DIMENSIONS



### RECOMMENDED PC BOARD PATTERNS



### ELECTRICAL CHARACTERISTICS

Item	Typical value	
Frequency range (Pass band)	2400 to 2500MHz	—
Unbalanced impedance	50Ω (Nominal)	—
Balanced impedance	50Ω (Nominal)	—
Insertion loss	[+25°C]	1.7dB max.
	[-40 to +85°C]	2.0dB max.
Attenuation	[880 to 960MHz]	40dB min.
	[1710 to 1910MHz]	32dB min.
	[4800 to 5000MHz]	30dB min.
Unbalanced port return loss	10dB min.	17dB
Phase difference at balanced port	180±15deg.	190deg.
Amplitude imbalance at balanced port	0±1.0dB	0.2dB
Temperature range	Operating	-40 to +85°C
	Storage	-40 to +85°C

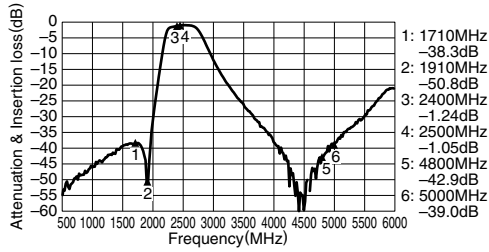
• Conformity to RoHS Directive: This means that, in conformity with EU Directive 2002/95/EC, lead, cadmium, mercury, hexavalent chromium, and specific bromine-based flame retardants, PBB and PBDE, have not been used, except for exempted applications.

• All specifications are subject to change without notice.

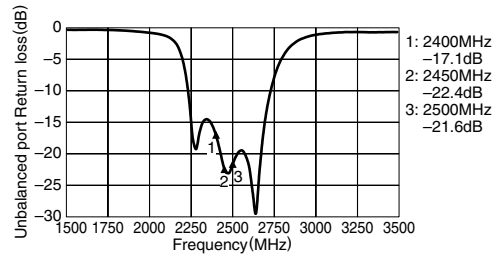
### FREQUENCY CHARACTERISTICS

Unbalance 50Ω/Balance 50Ω

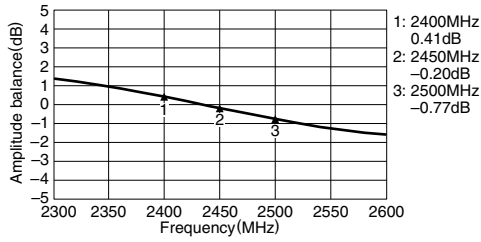
#### ATTENUATION vs. INSERTION LOSS



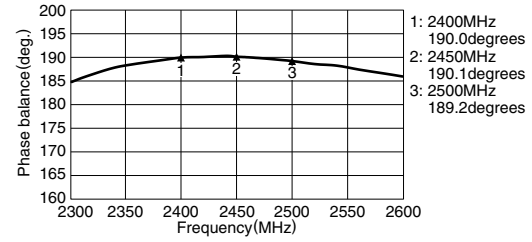
#### UNBALANCED PORT RETURN LOSS



#### AMPLITUDE BALANCE



#### PHASE BALANCE



• All specifications are subject to change without notice.