

Number of contacts

# 9-37



Stamped solder pins, straight with/without grounding board locks

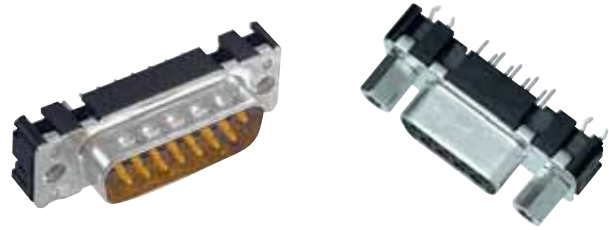
Identification	No. of contacts	Part No.			
<b>Performance levels</b> Explanations see page 05.04 Other performance levels on request		Performance level 3		Performance level 2	
<b>Male connector</b> metal shell with dimples					
Without grounding board locks	9	09 65 121 770 .		09 65 121 670 .	
	15	09 65 221 770 .		09 65 221 670 .	
	25	09 65 321 770 .		09 65 321 670 .	
	37	09 65 421 770 .		09 65 421 670 .	
With grounding board locks	9	09 65 161 771 .		09 65 161 671 .	
	15	09 65 261 771 .		09 65 261 671 .	
	25	09 65 361 771 .		09 65 361 671 .	
	37	09 65 461 771 .		09 65 461 671 .	
<b>Female connector</b> metal shell					
Without grounding board locks	9	09 66 111 750 .		09 66 111 650 .	
	15	09 66 211 750 .		09 66 211 650 .	
	25	09 66 311 750 .		09 66 311 650 .	
	37	09 66 411 750 .		09 66 411 650 .	
	50	09 66 511 750 .		09 66 511 650 .	
With grounding board locks	9	09 66 151 751 .		09 66 151 651 .	
	15	09 66 251 751 .		09 66 251 651 .	
	25	09 66 351 751 .		09 66 351 651 .	
	37	09 66 451 751 .		09 66 451 651 .	
Please insert digit for flange thread or fitted female screw locks					
M3 ▶ 1					
4-40 UNC ▶ 2					
fitted screw locks 4-40 UNC ▶ 3 <sup>1)</sup>					

D-Sub

<sup>1)</sup> Fitted screw locks 4-40 UNC not normally kept in stock for performance level 3  
Connector dimensions see page 05.09. Mating conditions see page 05.04.

Number of contacts

**9-37**



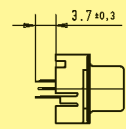
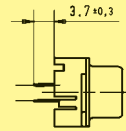
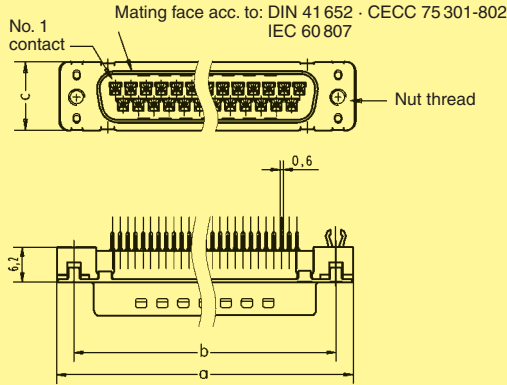
Stamped solder pins, straight with/without grounding board locks

Identification

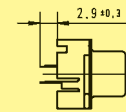
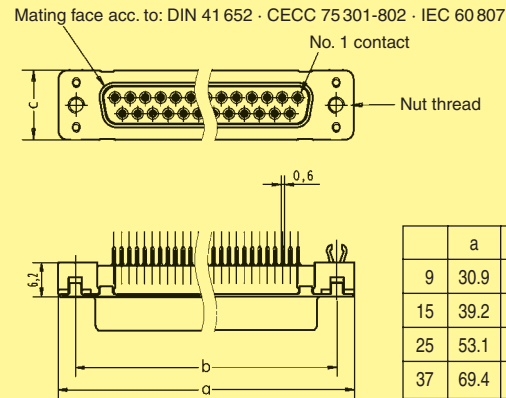
Drawing

Dimensions in mm

**Male connector**  
9 – 37 contacts



**Female connector**  
9 – 37 contacts



	a	b <sub>±0.1</sub>	c	g	h
9	30.9	25.0	12.5	4 x 2.74 = 10.96	3 x 2.74 = 8.22
15	39.2	33.3	12.5	7 x 2.74 = 19.18	6 x 2.74 = 16.44
25	53.1	47.0	12.5	12 x 2.76 = 33.12	11 x 2.76 = 30.36
37	69.4	63.5	12.5	18 x 2.76 = 49.68	17 x 2.76 = 46.92

**Board drillings**  
9 – 37 contacts

