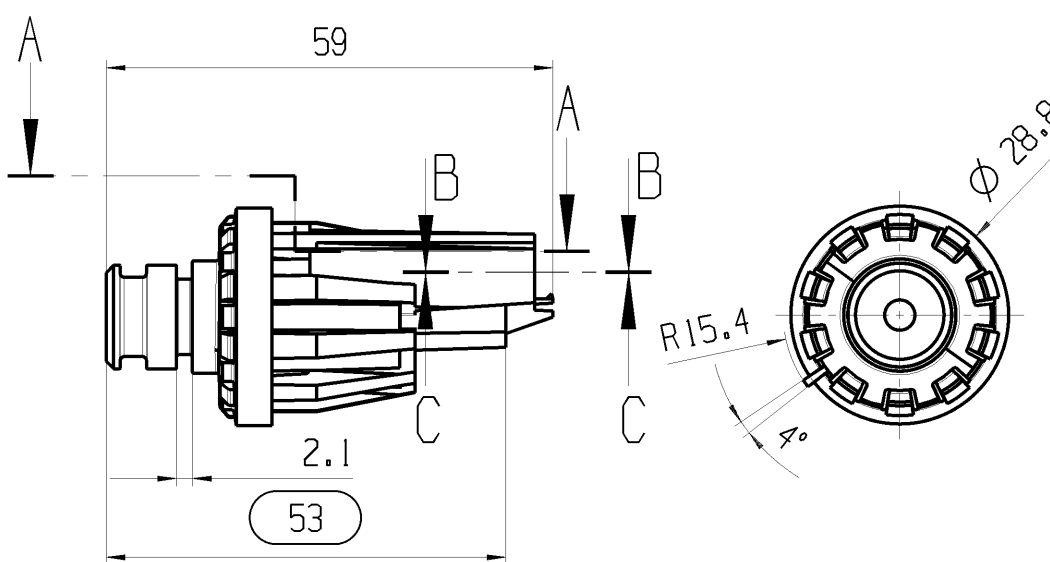
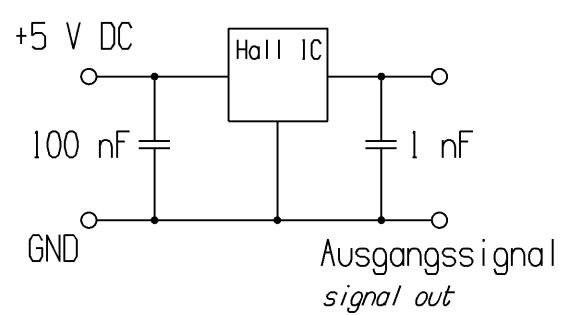


THIS DRAWING IS THE EXCLUSIVE PROPERTY OF MARQUARDT. WITHOUT THEIR CONSENT IT MAY NOT BE REPRODUCED OR GIVEN TO THIRD PARTIES.

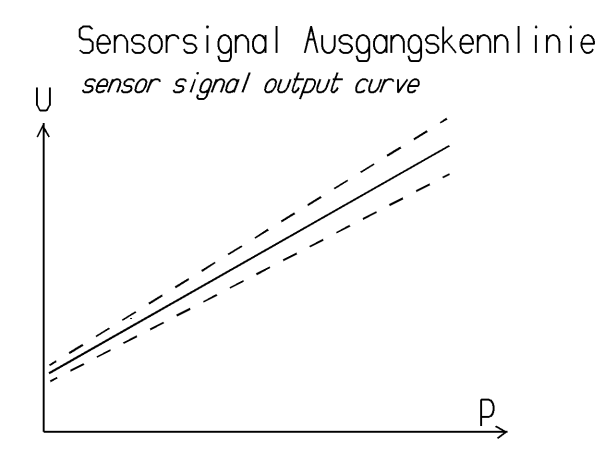
CONFIDENTIAL

VERTRAULICH

Alle Rechte bei Marquardt, auch fuer den Fall von Schutzrechtsmeldungen. Jede Veruegungsbefugnis, wie Kopier- und Weitergaberecht, bei uns.



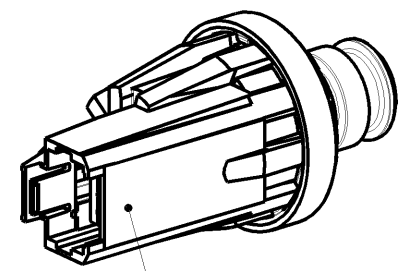
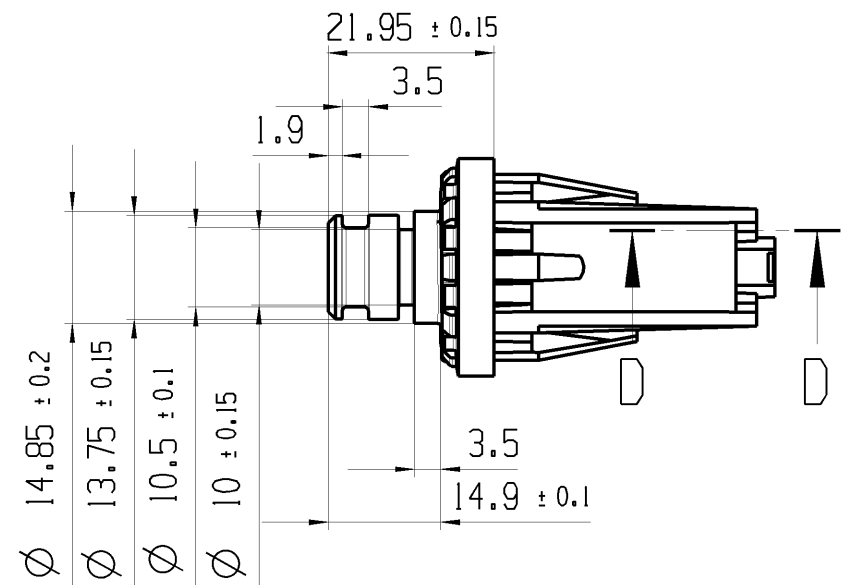
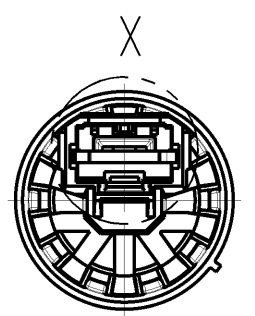
Ausgangssignal U ist proportional zum Eingangsdruck von 1.125 V bis 3.8 V
 Toleranzen:
 output signal U proportional to input pressure from 1.125 V to 3.8 V
 tolerances:
 Ausgangsspannung U in Volt
 output voltage U in Volt
 Druck p in bar
 Pressure p in bar



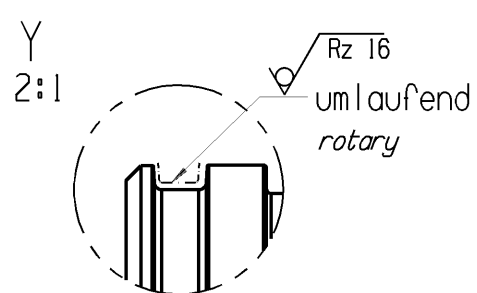
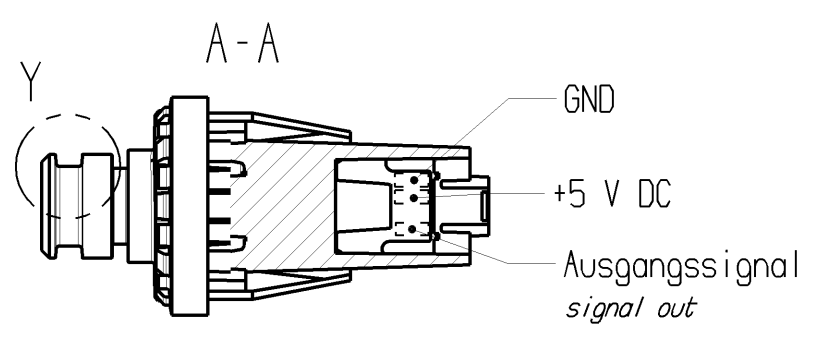
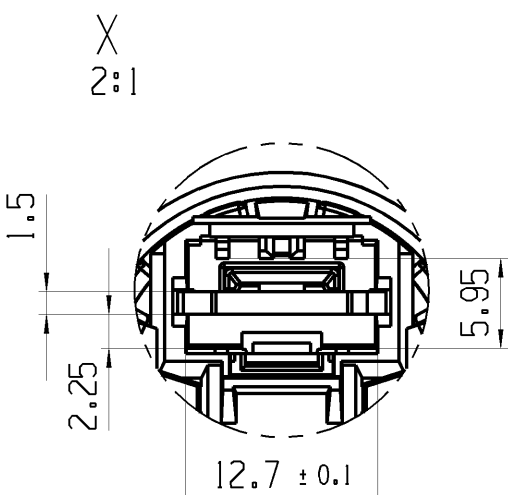
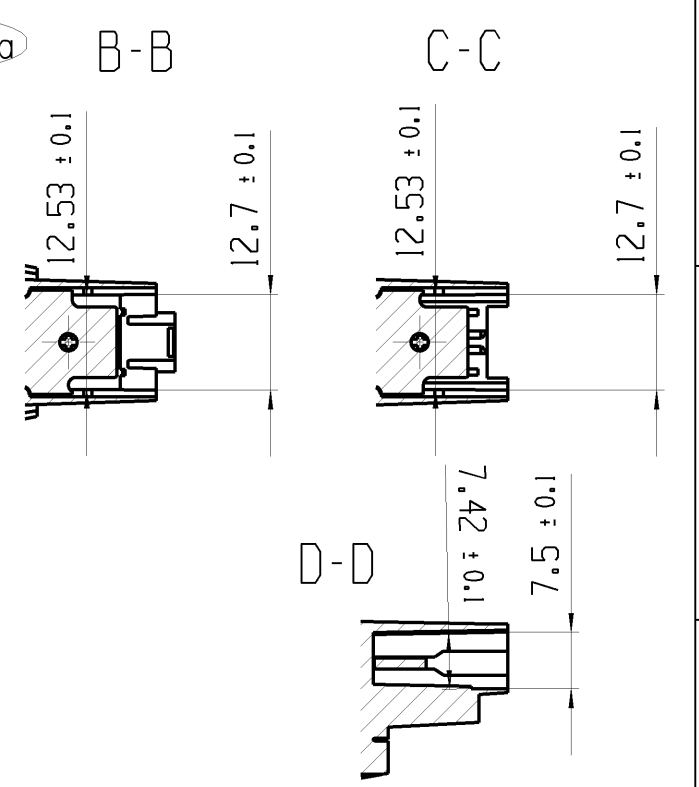
Toleranzen von 0 bar bis 4.5 bar
 Tolerances from 0 bar to 4.5 bar
 $U_{max} = 0.58 \times p + 1.23$
 $U_{nom} = 0.55 \times p + 1.125$
 $U_{min} = 0.52 \times p + 1.02$

Prozessueberwachung fuer folgende Druckwerte:
 processcapability for following pressure values:

0 kPa / 30 kPa / 50 kPa / 250 kPa



Aufschrift:
 Kundennummer: VI 9577448
 Produktionsdatum:
 MQ Produktnummer und Index: 2066.2102-03
 Marking:
 productnumber of customer: VI 9577448
 date code:
 MQ product number and Index: 2066.2102-03



fuer Form und Lage FOR SHAPE AND LOC.	◎	≡	0.1	Allgemeintoleranzen UNTOLERANCED DIMENSIONS				Pause COPY	Blatt SHEET 01	TYP K	Zeichn./DRAWING NO. 20662102	Index r
	PROJEKTION			Abmasse und Nennmassbereiche Angaben in mm	Loenge LENGTH	Radien RADII	Original Din A3					
fuer Winkel FOR ANGLE	± 2	↙ ↘	+0.25 / -0.25	ALL DIMENSIONS ARE IN MILLIMETRES	0-6 ± 0.15 ± 0.2	6-15 ± 0.2 ± 0.3	15-30 ± 0.25 ± 0.5	30-70 ± 0.4 ± 10%	0 10 20	DRUCKSENSOR pressure sensor		
n	73379	20.04.11	NAM	r	88585	27.02.14	NAM	CAD: NX V8.5		MARQUARDT		
m	72242	17.02.11	NAM	q	87746	02.12.13	NAM	gez./DRAWN BY 23.10.06 LOA				
l	68322	20.04.10	BRC	p	84453	27.08.13	NAM	gepr./CHECKED BY				
k	67585	04.03.10	BRC	o	77241	29.02.12	NAM	Ersatz fuer/REPLACEMENT OF V04182329				
Ausg. ISSUE	Aenderung REVISION	gez. DRAWN BY	Ausg. ISSUE	Aenderung REVISION	gez. DRAWN BY							