

Identification	Part No.			Drawing	Dimensions in mm
	Low construction	High construction	M		
Hoods	<b>Hoods side-entry</b> 	<b>19 30 016 1541</b> 19 30 016 1542		25 32	
			<b>19 30 016 0547</b> 19 30 016 0548	32 40	
	<b>Hoods top-entry</b> 	<b>19 30 016 1441</b> 19 30 016 1442		25 32	
			<b>19 30 016 0447</b> 19 30 016 0448	32 40	
Housings	<b>Housings bulkhead mounting</b> 	<b>09 30 016 0307</b>		—	Panel cut out 82 x 35 mm 
		with thermo-plastic cover <b>09 30 016 0306</b>		—	
		with metal cover <b>09 30 016 0318</b>		—	
	<b>Housings surface mounting</b> 	1 side-entry <b>19 30 016 1251</b>	<b>19 30 016 0252</b>	25 32	
		2 side-entries <b>19 30 016 1291</b>	<b>19 30 016 0291</b> <b>19 30 016 0292</b>	25 32	
		with thermo-plastic cover 1 side-entry <b>19 30 016 1256</b>		25	
		with thermo-plastic cover 2 side-entries <b>19 30 016 1296</b>	with thermo-plastic cover <b>19 30 016 0297</b>	25 32	
		with metal cover 2 side-entries <b>19 30 016 2296</b>	19 30 016 2297	25 32	
	<b>Hoods cable to cable</b> 	<b>19 30 016 1751</b>	<b>19 30 016 0757</b>	25 32	

Han HsB

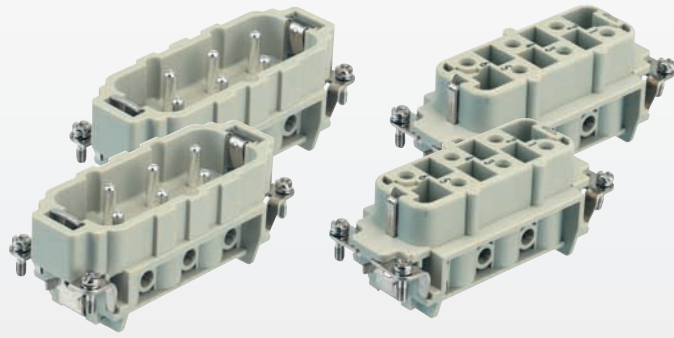
<sup>1)</sup> Blind way for one cable entry

	h
Low construction	56
High construction	81

	h
Low construction	47.5
High construction	78.5

Number of contacts

12 +



Inserts

Identification	Series	Part No.		Drawing	Dimensions in mm
		Male insert (M)	Female insert (F)		

Screw terminal

Han®  
HsB

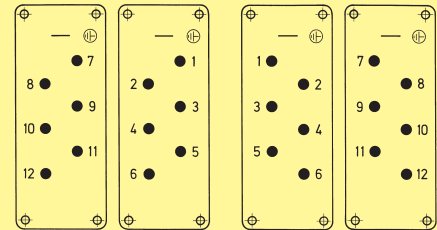
1- 6  
7-12

**09 31 006 2601**  
**09 31 006 2611**

**09 31 006 2701**  
**09 31 006 2711**

Dimensions for inserts see page 07.11

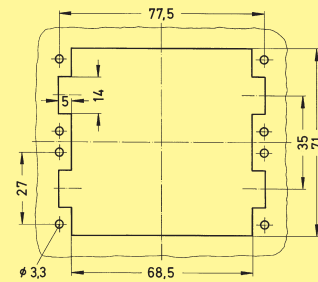
Contact arrangement View from termination side



M

F

Panel cut out for inserts  
for use without hoods/housings



Han  
HsB