

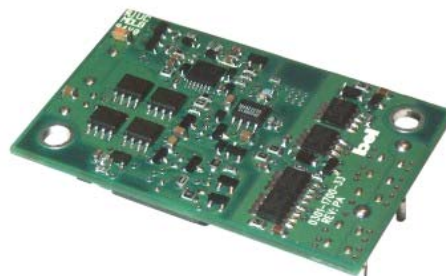
ISOLATED DC/DC CONVERTERS

48 VDC Input 12 VDC/20 A Output, 1/4 Brick

bel
POWER PRODUCTS

ORCM-20S/30S Series RoHS Compliant PRELIMINARY

- Industry standard quarter-brick package
- Up to 240 W at 96% efficiency
- 1500 V isolation
- Remote on/off
- Low cost
- Safety Agency Approvals



Description

The ORCM-20S/30S "Cimarron" Series are isolated DC/DC converters that operate from a nominal 48 VDC source.

These converters use a full bridge power train to provide isolation and step down. These units will provide up to 240 W of output power from a nominal 48 VDC input. These units are designed to be highly efficient and low cost. Features include remote on/off, over current protection and under voltage lockout. These converters are provided in an industry standard quarter-brick package.

Part Selection

| Output Voltage | Input Voltage | Max. Output Current | Max. Output Power | Typical Efficiency | Model Number |
|----------------|---------------|---------------------|-------------------|--------------------|--------------|
| 12 V | 48 V | 20 A | 240 W | 96% | ORCM-20S12L |
| 8 V | 48 V | 30 A | 240 W | 96% | ORCM-30S08L |

- Notes:** 1. Change last character in part number from "L" to "H" for Active High On/Off Logic (e.g. ORCM-20S12H).
2. Add "G" suffix at the end of the model number to indicate Tray Packaging.
3. All part numbers above indicate RoHS 6. Change the second letter "R" to "7" for RoHS 5 part numbers.

Input Specifications

| Parameter | Min | Typ | Max | Notes |
|---------------------------------|------|------|--------|---|
| Input Voltage Range | 36 V | 48 V | 55 V | |
| Input Current (no load) | - | - | 80 mA | |
| Input Current (full load) | - | - | 5.3 A | |
| Reflected Ripple Current(pk-pk) | - | - | 100 mA | Reflected ripple current through a 12 uH source inductor at nominal input voltage and rated load current. |
| Reflected Ripple Current(rms) | - | - | 50 mA | |

Output Specifications

| Parameter | Min | Typ | Max | Notes |
|--------------------------|------------------------------------|--------------------------------------|--------------------------------------|--|
| Output Voltage | $\frac{36 V_{in}}{8.8 V}$ 8.8 V | $\frac{48 V_{in}}{12.0 V}$ 12.0 V | $\frac{55 V_{in}}{14.0 V}$ 14.0 V | Setpoint at no load. |
| | 5.8 V | 8.0 V | 9.4 V | |
| Output Current | 0 A | - | 20 A | |
| | 0 A | - | 30 A | |
| Load Regulation | - | - | 5% | |
| Ripple and Noise (pk-pk) | - | - | 100 mV | 0 to 20 MHz BW, use 1.0 uF ceramic cap and 15 uF/100 m ohm tantalum cap at the output. |
| Ripple and Noise (rms) | - | - | 45 mV | |

ISOLATED DC/DC CONVERTERS

48 VDC Input 12 VDC/20 A Output, 1/4 Brick

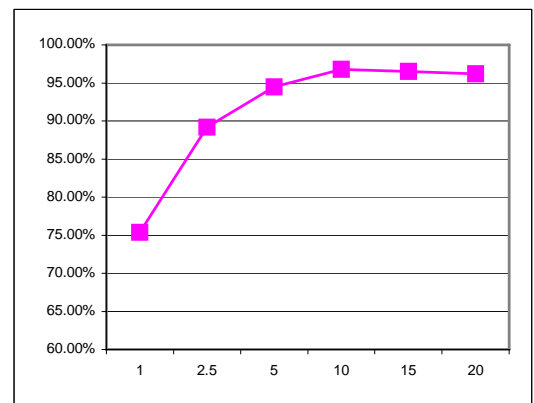
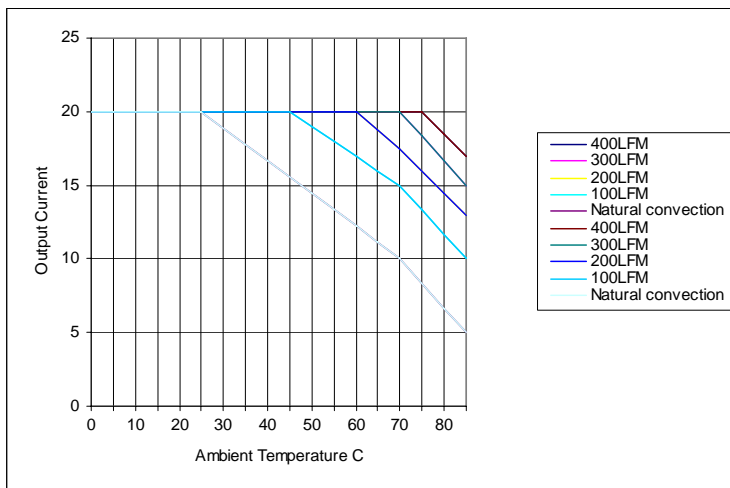


Output Specifications (continued)

| Parameter | Min | Typ | Max | Notes |
|-------------------------|-----|--------|--------|--|
| Transient Response | | | | |
| Max deviation | - | 200 mV | 350 mV | di/dt = 0.1 A/uS, Vin = 48 V Ta = 25 °C, 25% load change. |
| Recovery to within ± 1% | - | 50 uS | 100 uS | |

General Specifications

| Parameter | Min | Typ | Max | Notes |
|-----------------------------------|--|---------------|--------|-------|
| Switching Frequency | - | 120 kHz | - | |
| Operating Temperature | 0 °C | - | 70 °C | |
| Non-Operating Temperature | -55 °C | - | 125 °C | |
| Weight | - | 42 g (1.5 oz) | - | |
| MTBF (MIL-HDBK-217K) | >1,000,000 hours | | | |
| Dimensions | | | | |
| Inches (L × W × H) | 2.28 x 1.45 x 0.50 | | | |
| Millimeters (L × W × H) | 57.9 x 36.8 x 12.7 | | | |
| Protection Features | | | | |
| Short circuit | Continuous | | | |
| Over current | 120% to 140% max Io | | | |
| Under-voltage | UVLO Vin < 39.0 | | | |
| Remote On/Off | | | | |
| Active Low | 0 V | - | 0.8 V | |
| (Optional Active High) | 2.4 V | - | 18 V | |
| Safety Agency Approvals (pending) | UL / cUL Recognized Certified to EN60950 | | | |



Efficiency vs. Output Current (A)

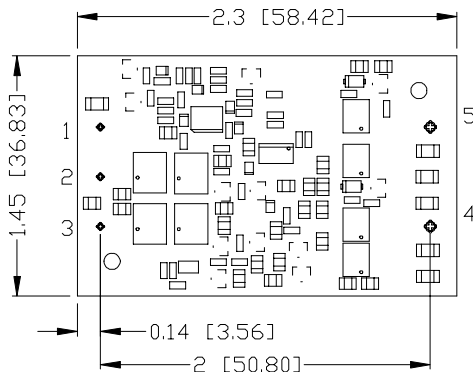
air flowing from input to output (nominal input voltage).

ISOLATED DC/DC CONVERTERS

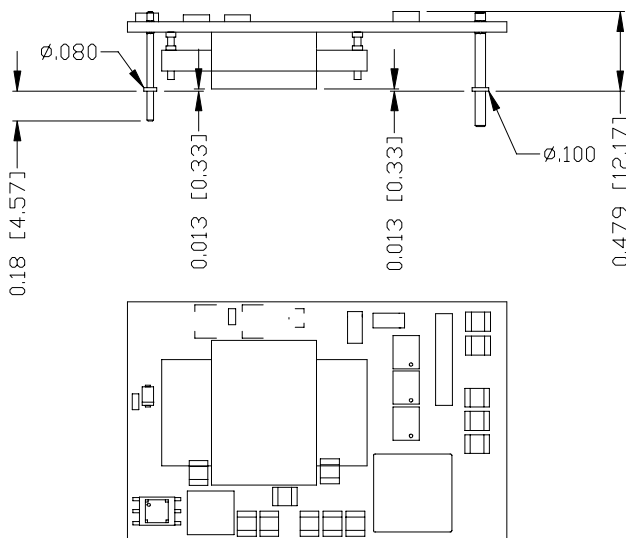
48 VDC Input 12 VDC/20 A Output, 1/4 Brick



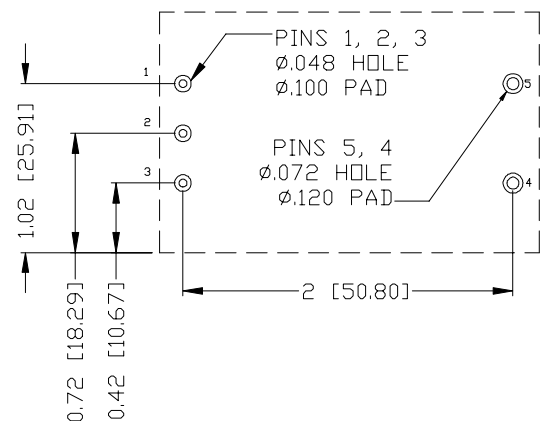
Mechanical drawing



| PIN ASSIGNMENTS | PIN DIAMETER |
|-----------------|--------------|
| 1 +VIN | .039 |
| 2 ON/OFF | .039 |
| 3 -VIN | .039 |
| 4 -VOUT | .062 |
| 5 +VOUT | .062 |



RECOMMENDED PCB FOOTPRINT



RoHS Compliance

Complies with the European Directive 2002/95/EC, calling for the elimination of lead and other hazardous substances from electronic products.



©2008 Bel Fuse Inc. Specifications subject to change without notice. 103108

CORPORATE

Bel Fuse Inc.
206 Van Vorst Street
Jersey City, NJ 07302
Tel 201-432-0463
Fax 201-432-9542
www.belfuse.com

FAR EAST

Bel Fuse Ltd.
8F/ 8 Luk Hop Street
San Po Kong
Kowloon, Hong Kong
Tel 852-2328-5515
Fax 852-2352-3706
www.belfuse.com

EUROPE

Bel Fuse Europe Ltd.
Preston Technology Management Centre
Marsh Lane, Suite G7, Preston
Lancashire, PR1 8UD, U.K.
Tel 44-1772-556601
Fax 44-1772-888366
www.belfuse.com