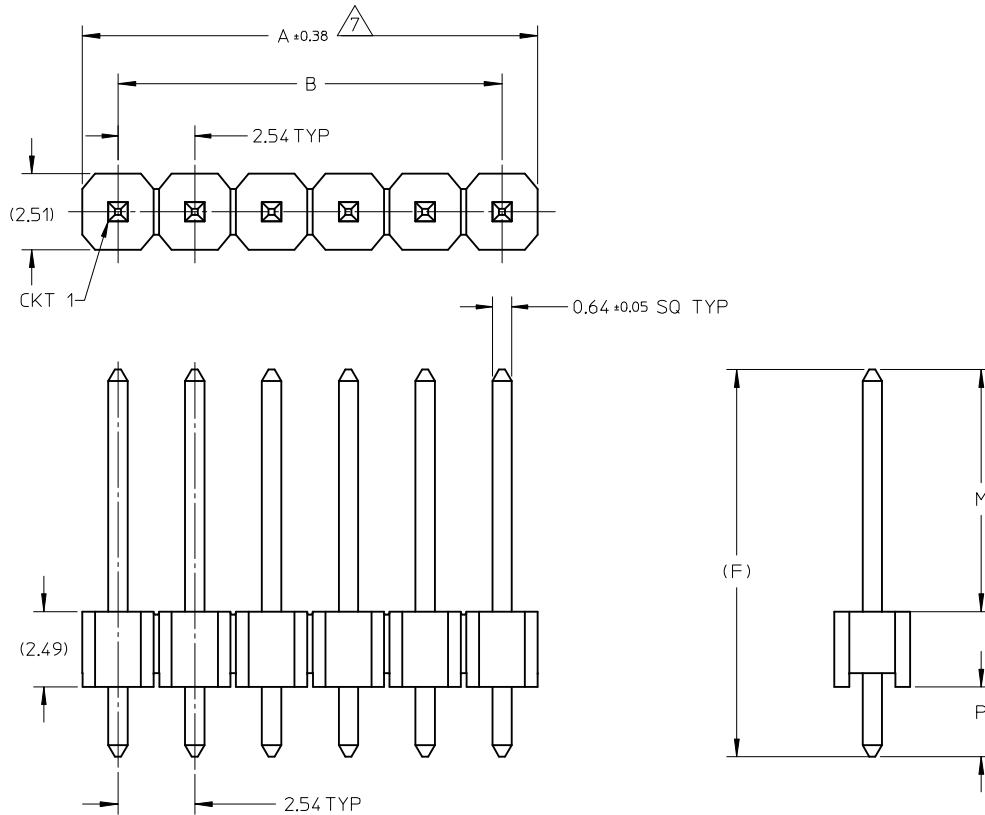


ASSEMBLY WITHOUT CAP

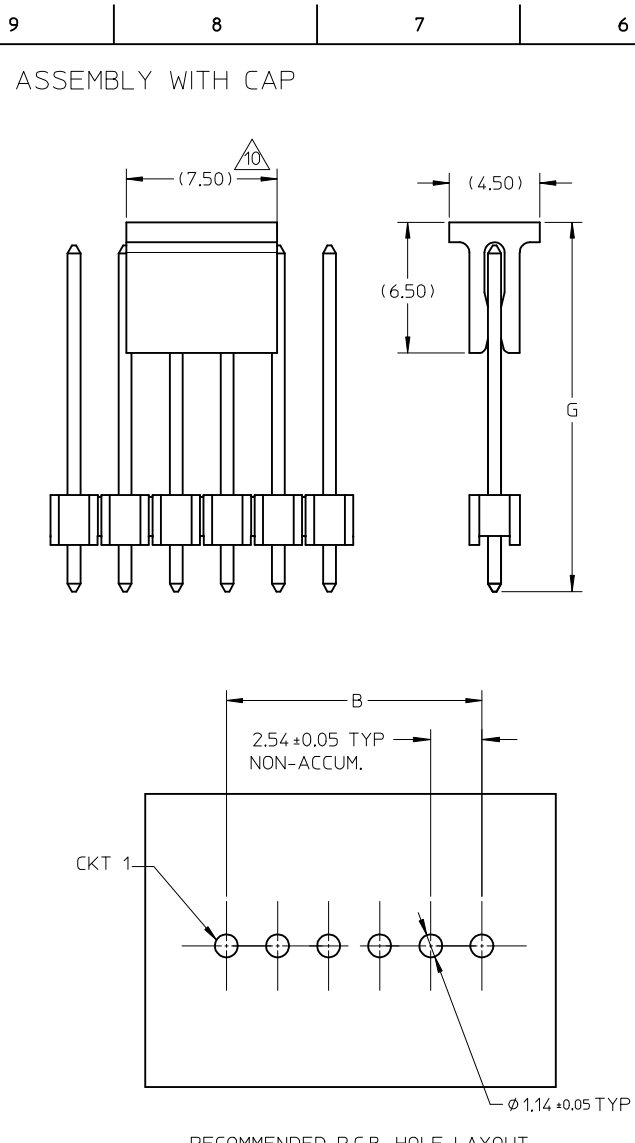


NOTES

1. MATERIAL:
HSG: NYLON, GLASS-FILLED, UL94V-0 COLOR: BLACK
PIN: 0.64MM SQ, COPPER ALLOY
2. PLATING TYPE:
 - (1) GOLD FLASH OVER
1.25µm MIN. NICKEL OVERALL.
 - (2) GOLD FLASH ON CONTACT AND
2.50µm MIN. TIN ON SOLDER TAIL OVER
1.25µm MIN. NICKEL OVERALL.
 - (3) 0.38µm MIN. GOLD PLATE ON CONTACT AND
2.00µm MIN. TIN ON SOLDER TAIL OVER
1.25µm MIN. NICKEL OVERALL.
 - (4) 0.75µm MIN. GOLD PLATE ON CONTACT AND
2.00µm MIN. TIN ON SOLDER TAIL OVER
1.25µm MIN. NICKEL OVERALL.
 - (5) 2.50µm MIN TIN OVERALL
1.25µm MIN NICKEL OVERALL
3. PRODUCT SPECIFICATION: PS-87920-019
4. PACKAGING TYPE: SEE TABLE
5. WAFER TO BE FLAT WITHIN 0.003 mm/mm
6. RECOMMENDED PCB THICKNESS IS 1.60mm±0.10
7. IRREGULAR CIRCUIT CUTOFF WITHIN BREAKAWAY SECTION IS PERMISSIBLE. CUTTING OR CHIPPING OF THE MAIN BODY IS NOT ACCEPTABLE
8. THE ABOVE CKT 6 IS FOR ILLUSTRATION PURPOSE ONLY
9. PACKAGING SPECIFICATION:
TRAY: PK-89990-489
BULK: PK-89990-491
10. CAP TO BE PLACED AT THE CENTER OF THE CONNECTOR.

SEE SHEET 2 EC NO: S2015-0293 DRWN:CGOH 2014/11/18 CHKD:ATSEE 2014/12/01 APPR:KHLIM 2014/12/02	DESCRIPTION REV	QUALITY SYMBOLS	GENERAL TOLERANCES (UNLESS SPECIFIED)	DIMENSION STYLE MM ONLY	SCALE NTS	DESIGN UNITS METRIC	THIRD ANGLE PROJECTION																														
		$F_A=0$ $F_C=0$ $F_P=0$	<table border="1"> <tr> <td></td> <td>mm</td> <td>INCH</td> </tr> <tr> <td>4 PLACES</td> <td>± ---</td> <td>± ---</td> </tr> <tr> <td>3 PLACES</td> <td>± ---</td> <td>± ---</td> </tr> <tr> <td>2 PLACES</td> <td>± 0.2</td> <td>± ---</td> </tr> <tr> <td>1 PLACE</td> <td>± ---</td> <td>± ---</td> </tr> </table>		mm	INCH	4 PLACES	± ---	± ---	3 PLACES	± ---	± ---	2 PLACES	± 0.2	± ---	1 PLACE	± ---	± ---	<table border="1"> <tr> <td>DRAWN BY</td> <td>DATE</td> <td>TITLE</td> </tr> <tr> <td>KCHO</td> <td>2004/03/24</td> <td rowspan="3">CUSTOM HEADER 2.54MM PITCH, SINGLE ROW SINGLE WAFER, T/H HEADER</td> </tr> <tr> <td>CHECKED BY</td> <td>DATE</td> </tr> <tr> <td>PTLIM</td> <td>2004/04/02</td> </tr> <tr> <td>APPROVED BY</td> <td>DATE</td> <td>MOLEX MOLEX INCORPORATED</td> </tr> <tr> <td>SCLOW</td> <td>2004/04/08</td> <td>DOCUMENT NO. SD-87891-001</td> </tr> </table>	DRAWN BY	DATE	TITLE	KCHO	2004/03/24	CUSTOM HEADER 2.54MM PITCH, SINGLE ROW SINGLE WAFER, T/H HEADER	CHECKED BY	DATE	PTLIM	2004/04/02	APPROVED BY	DATE	MOLEX MOLEX INCORPORATED	SCLOW	2004/04/08	DOCUMENT NO. SD-87891-001	SIZE A3	THIS DRAWING CONTAINS INFORMATION THAT IS PROPRIETARY TO MOLEX INCORPORATED AND SHOULD NOT BE USED WITHOUT WRITTEN PERMISSION
			mm	INCH																																	
		4 PLACES	± ---	± ---																																	
3 PLACES	± ---	± ---																																			
2 PLACES	± 0.2	± ---																																			
1 PLACE	± ---	± ---																																			
DRAWN BY	DATE	TITLE																																			
KCHO	2004/03/24	CUSTOM HEADER 2.54MM PITCH, SINGLE ROW SINGLE WAFER, T/H HEADER																																			
CHECKED BY	DATE																																				
PTLIM	2004/04/02																																				
APPROVED BY	DATE	MOLEX MOLEX INCORPORATED																																			
SCLOW	2004/04/08	DOCUMENT NO. SD-87891-001																																			
DRAFT WHERE APPLICABLE MUST REMAIN WITHIN DIMENSIONS		SEE TABLE	1 OF 4																																		

CKT SIZE	DIMENSION	
	A	B
02	5.08	2.54
03	7.62	5.08
04	10.16	7.62
05	12.70	10.16
06	15.24	12.70
07	17.78	15.24
08	20.32	17.78
09	22.86	20.32
10	25.40	22.86
11	27.94	25.40
12	30.48	27.94
13	33.02	30.48
14	35.56	33.02
15	38.10	35.56
16	40.64	38.10
17	43.18	40.64
18	45.72	43.18
19	48.26	45.72
20	50.80	48.26
21	53.34	50.80
22	55.88	53.34
23	58.42	55.88
24	60.96	58.42
25	63.50	60.96
26	66.04	63.50
27	68.58	66.04
28	71.12	68.58
29	73.66	71.12
30	76.20	73.66
31	78.74	76.20
32	81.28	78.74
33	83.82	81.28
34	86.36	83.82
35	88.90	86.36
36	91.44	88.90
37	93.98	91.44
38	96.52	93.98
39	99.06	96.52
40	101.60	99.06



ASSY W/CAP IN T&R	PART NO. IN TRAY PACKAGING	PART NO. IN BULK PACKAGING	CKT SIZE	VOID PIN	KINK PIN	G	DIMENSION			PLATING TYPE
							OAL	MATING END	SOLDER TAIL	
							F	M	P	
-	87891-0200	-	02	-	-	-	11.76	6.09	3.18	5
-	87891-0207	-	02	-	-	-	9.80	4.00	3.31	5
-	87891-0208	-	02	-	-	-	7.49	4.00	1.00	2
-	87891-0209	-	02	-	-	-	10.80	5.08	3.23	5
-	87891-0210	-	02	-	-	-	31.00	25.54	2.97	5
-	87891-0307	-	03	-	-	-	22.73	18.74	1.50	5
-	87891-0402	-	04	2	-	-	10.80	5.89	2.41	5
-	87891-0407	-	04	-	-	-	9.80	4.00	3.31	5
-	87891-0408	-	04	-	-	-	31.00	25.54	2.97	5
-	87891-0411	-	04	-	-	-	10.09	4.00	3.60	5
87891-0417	-	-	04	-	-	16.31	15.11	9.01	3.61	5
-	87891-0500	-	05	-	-	-	11.94	6.10	3.30	5
-	87891-0501	-	05	-	-	-	13.62	8.08	3.05	5
-	87891-0502	-	05	2	-	-	10.80	5.89	2.41	5
-	87891-0503	-	05	2	-	-	45.00	13.51	29.00	5
-	87891-0504	-	05	2	-	-	45.00	13.51	29.00	3
-	87891-0507	-	05	4	-	-	10.92	5.84	2.59	3
-	-	87891-0508	05	2, 4	-	-	11.38	5.84	3.05	5
-	87891-0516	-	05	-	-	-	32.49	16.00	14.00	4
-	87891-0517	-	05	-	-	-	23.62	17.32	3.81	5
-	87891-0607	-	06	-	-	-	13.75	8.08	3.18	5
-	87891-0608	-	06	-	-	-	18.03	13.54	2.00	5
-	87891-0609	-	06	-	-	-	28.30	22.16	3.65	5

ADD 87891-0508 EC NO: S2015-0293 DRWN:CGOH 2014/11/18 CHKD:ATSEE 2014/12/01 APPR:KHLIM 2014/12/02	DESCRIPTION REV	QUALITY SYMBOLS	GENERAL TOLERANCES (UNLESS SPECIFIED)	DIMENSION STYLE	SCALE	DESIGN UNITS	THIRD ANGLE PROJECTION	
		$\nabla_A = 0$ $\nabla_G = 0$ $\nabla_P = 0$	mm INCH 4 PLACES ± --- ± --- 3 PLACES ± --- ± --- 2 PLACES ± 0.2 ± --- 1 PLACE ± --- ± --- ANGULAR ± 3 °	MM ONLY	NTS	METRIC	DRAWN BY: KCHO CHECKED BY: PTLIM APPROVED BY: SCLOW DATE: 2004/03/24 DATE: 2004/04/02 DATE: 2004/04/08	TITLE
		DRAFT WHERE APPLICABLE MUST REMAIN WITHIN DIMENSIONS	MATERIAL NO. SEE TABLE	DOCUMENT NO. SD-87891-001	SHEET NO. 2 OF 4			
		THIS DRAWING CONTAINS INFORMATION THAT IS PROPRIETARY TO MOLEX INCORPORATED AND SHOULD NOT BE USED WITHOUT WRITTEN PERMISSION						

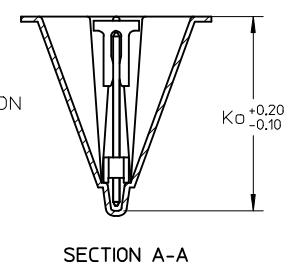
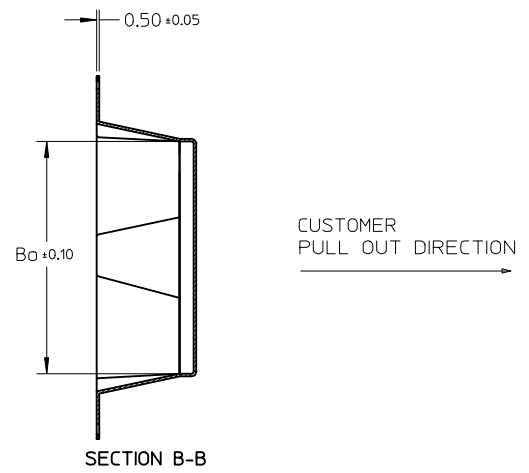
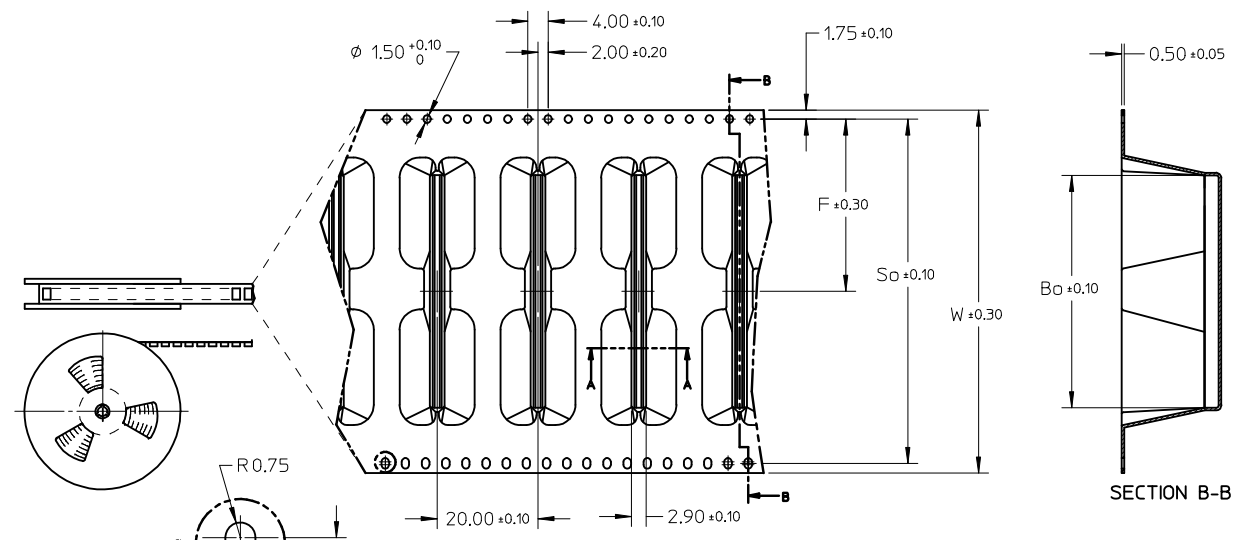
10 9 8 7 6 5 4 3 2 1

ASSY W/CAP IN T&R	PART NO. IN TRAY PACKAGING	PART NO. IN BULK PACKAGING	CKT SIZE	VOID PIN	KINK PIN	G	DIMENSION			PLATING TYPE
							OAL	MATING END	SOLDER TAIL	
							F	M	P	
-	87891-0602	-	06	-	-	-	12.80	8.00	2.31	5
-	87891-0700	-	07	-	-	-	11.94	6.10	3.30	5
-	87891-0751	-	07	-	-	-	13.74	8.00	3.25	5
-	87891-0851	-	08	-	-	-	13.74	8.00	3.25	5
-	-	87891-2601	26	4, 7, 17	-	-	11.13	5.59	3.05	3
87891-1817	-	-	18	-	-	18.36	17.20	13.21	1.50	5
87891-1818	-	-	18	-	-	18.36	17.20	13.21	1.50	3
87891-2817	-	-	28	-	-	18.36	17.20	13.21	1.50	5
87891-2818	-	-	28	-	-	18.36	17.20	13.21	1.50	3

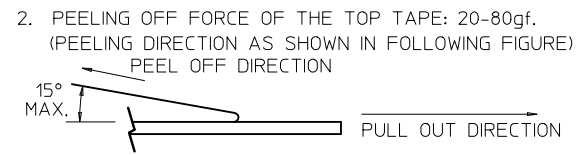
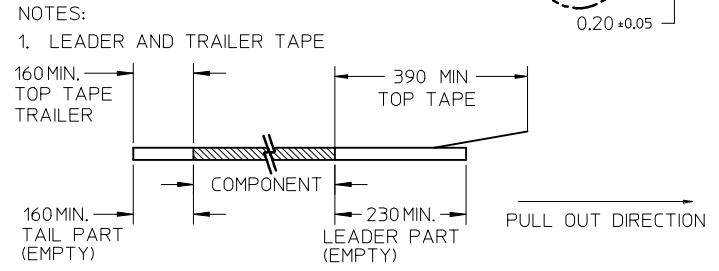
SEE SHEET 2 EC NO: S2015-0293 DRWN:CGOH 2014/11/18 CHKD:ATSEE 2014/12/01 APPR:KHLIM 2014/12/02	DESCRIPTION REV	QUALITY SYMBOLS	GENERAL TOLERANCES (UNLESS SPECIFIED)	DIMENSION STYLE	SCALE	DESIGN UNITS	THIRD ANGLE PROJECTION	
		$F_A=0$ $F_C=0$ $F_P=0$	mm INCH 4 PLACES ± --- ± --- 3 PLACES ± --- ± --- 2 PLACES ± 0.2 ± --- 1 PLACE ± --- ± --- ANGULAR ± 3 °	MM ONLY	NTS	METRIC		
			DRAFT WHERE APPLICABLE MUST REMAIN WITHIN DIMENSIONS	DRAWN BY: KCHO DATE: 2004/03/24 CHECKED BY: PTLIM DATE: 2004/04/02 APPROVED BY: SCLOW DATE: 2004/04/08	TITLE	CUSTOM HEADER 2.54MM PITCH, SINGLE ROW SINGLE WAFER, T/H HEADER		
				MATERIAL NO. DOCUMENT NO. SHEET NO. SEE TABLE SD-87891-001 3 OF 4	MOLEX INCORPORATED			

9 8 7 6 5 4 3 2 1

CKT	F	So	W	Bo	Ko	QTY/ REEL
4	14.20	28.40	32.00	10.60	17.50	250
18	34.20	68.40	72.00	46.12	19.25	230
28	42.20	84.40	88.00	71.52	19.25	230



ASSEMBLY WITH CAP IN TAPE AND REEL ORIENTATION



3. PACKAGING STANDARD IS AS PER EIA-481.
 4. THE TAPE IS TREATED FOR ANTI-STATIC.

SEE SHEET 2 EC NO: S2015-0293 DRWN:CGOH 2014/11/18 CHKD:ATSEE 2014/12/01 APPR:KHLIM 2014/12/02	QUALITY SYMBOLS $F_A=0$ $F_C=0$ $F_P=0$	GENERAL TOLERANCES (UNLESS SPECIFIED)		DIMENSION STYLE MM ONLY	SCALE NTS	DESIGN UNITS METRIC	THIRD ANGLE PROJECTION		
		4 PLACES ± --- ± --- 3 PLACES ± --- ± --- 2 PLACES ± 0.2 ± --- 1 PLACE ± --- ± ---	mm INCH	DRAWN BY KCHO	DATE 2004/03/24	TITLE CUSTOM HEADER 2.54MM PITCH, SINGLE ROW SINGLE WAFER, T/H HEADER			
		ANGULAR ± 3 °		CHECKED BY PTLIM	DATE 2004/04/02	MOLEX INCORPORATED			
		DRAFT WHERE APPLICABLE MUST REMAIN WITHIN DIMENSIONS		APPROVED BY SCLOW	DATE 2004/04/08	MATERIAL NO. SEE TABLE	DOCUMENT NO. SD-87891-001	SHEET NO. 4 OF 4	