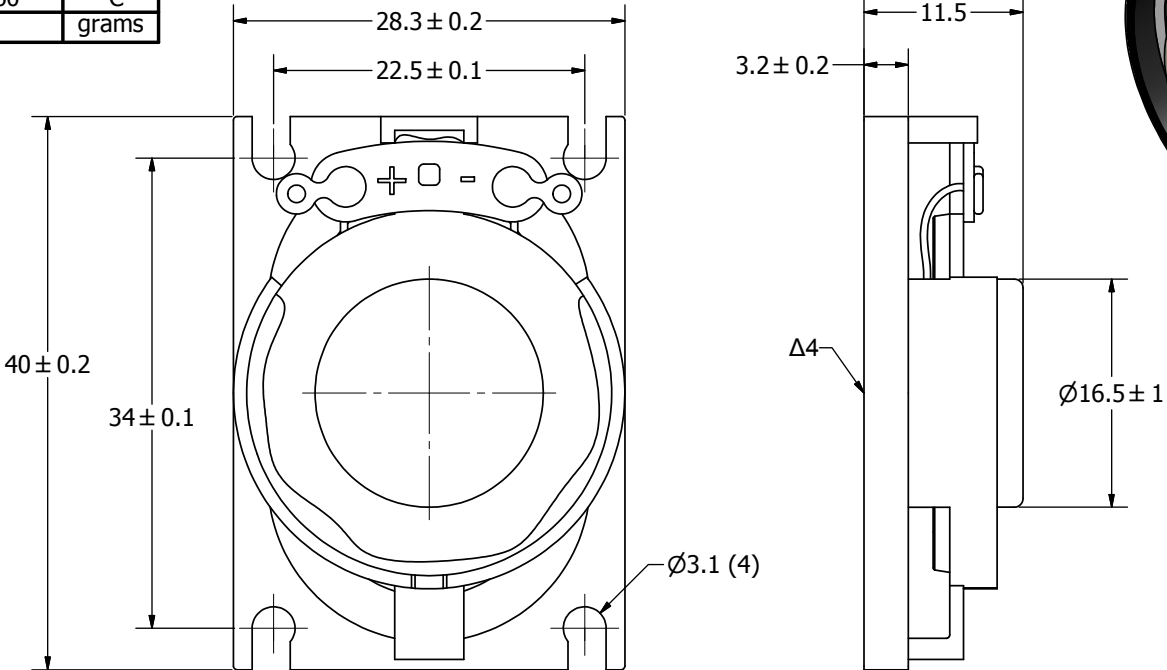



| SPECIFICATIONS | | |
|---|----------------|-------|
| PARAMETERS | VALUES | UNITS |
| RATED INPUT POWER | 2 | W |
| MAX INPUT POWER | 4 | W |
| IMPEDANCE | $8 \pm 15\%$ | OHM |
| OUTPUT SPL @ 1W/1M (AT 1.0, 1.2, 1.5, 2.0 kHz) | 84 ± 3 | dBA |
| DISTORTION (MAX.) | 5% | - |
| RESONANT FREQUENCY | $380 \pm 20\%$ | Hz |
| FREQUENCY RANGE | 380 ~ 20000 | Hz |
| HOUSING MATERIAL | ABS | - |
| CONE MATERIAL | TREATED PAPER | - |
| MAGNET MATERIAL | Nd-Fe-B | - |
| OPERATING TEMPERATURE | -20 ~ +60 | °C |
| WEIGHT | 11.5 | grams |

THIS DOCUMENT CONTAINS DATA PROPRIETARY TO PROJECTS UNLIMITED, INC. ANY USE OR REPRODUCTION, IN ANY FORM, WITHOUT PRIOR WRITTEN PERMISSION OF PROJECTS UNLIMITED, INC. IS PROHIBITED.
©2003, Projects Unlimited Inc.

| REVISION HISTORY | | | |
|------------------|--|------------|----------|
| LTR | DESCRIPTION | DATE | APPROVED |
| - | RELEASED FROM ENGINEERING | 4/01/2008 | |
| A | REVISED TO INVENTOR 3-D DRAWING TEMPLATE | 10/07/2008 | B.R. |



- NOTES:**
1. ALL DIMENSIONS ARE IN MILLIMETERS.
 2. SPECIFICATIONS SUBJECT TO CHANGE OR WITHDRAWAL WITHOUT NOTICE.
 3. THIS PART IS RoHS 2002/95/EC COMPLIANT.
 - Δ4. CONE HAS BEEN TREATED FOR WATER RESISTANCE.

| | | | | | | | | |
|---|--|--|-----------|------------|----------------|-------------|-----------|------------|
| UNLESS OTHERWISE SPECIFIED: | | Designed by | Date | Checked by | Date | Approved by | Date | Drawn Date |
| DIMENSIONS ARE IN MILLIMETERS, | | J.D. | 5/25/2006 | E.P. | 5/25/2006 | B.R. | 5/25/2006 | 10/7/2008 |
| TOLERANCES ARE ±0.5 AND ANGLES ARE ±3°. | |  <p>pui audio A Division of Projects Unlimited</p> | | | AS04008PO-WR-R | | | |
| AS04008PO-WR-R.idw | | | | | Speaker | | | Edition |
| | | | | | - | | | 1 / 1 |