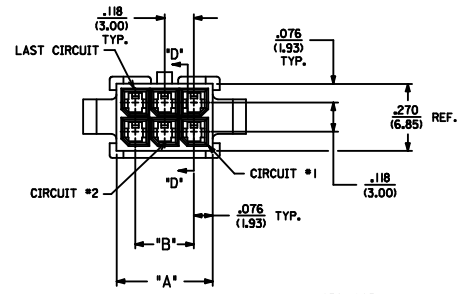
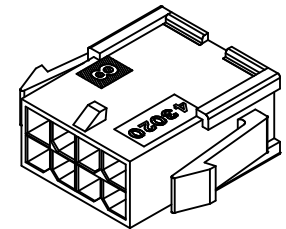


ASSEMBLY ITEM NUMBER	PART CHARACTERISTICS	
	NUMBER OF POSITION	PANEL MOUNT OPTION
43020-0208	2	YES
43020-0209	2	NO
43020-0408	4	YES
43020-0409	4	NO
43020-0808	6	YES
43020-0809	6	NO
43020-0808	8	YES
43020-0809	8	NO
43020-1008	10	YES
43020-1009	10	NO
43020-1208	12	YES
43020-1209	12	NO
	14	YES
	14	NO
	16	YES
	16	NO
	18	YES
	18	NO
	20	YES
	20	NO
	22	YES
	22	NO
	24	YES
	24	NO

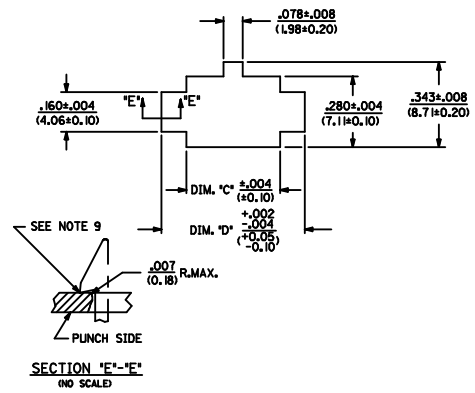
CKT. NO.	DIM. 'A'	DIM. 'B'	DIM. 'C'	DIM. 'D'
2	.152/(3.86)	N/A	.166/(4.21)	.311/(7.90)
4	.270/(6.85)	.118/(3.00)	.284/(7.21)	.429/(10.90)
6	.388/(9.85)	.236/(6.00)	.402/(10.21)	.547/(13.89)
8	.506/(12.85)	.354/(9.00)	.520/(13.21)	.665/(16.89)
10	.624/(15.85)	.472/(12.00)	.638/(16.21)	.783/(19.89)
12	.742/(18.85)	.591/(15.00)	.756/(19.21)	.901/(22.89)
14	.860/(21.85)	.709/(18.00)	.874/(22.20)	1.019/(25.88)
16	.978/(24.85)	.827/(21.00)	.992/(25.20)	1.137/(28.88)
18	1.096/(27.85)	.945/(24.00)	1.110/(28.20)	1.255/(31.88)
20	1.215/(30.85)	1.063/(27.00)	1.229/(31.22)	1.373/(34.87)
22	1.333/(33.85)	1.181/(30.00)	1.347/(34.22)	1.491/(37.87)
24	1.451/(36.85)	1.299/(33.00)	1.465/(37.22)	1.609/(40.87)



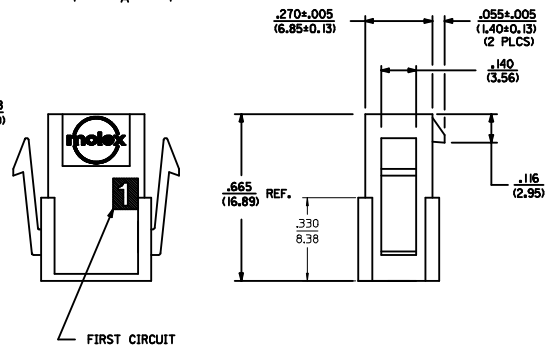
- NOTES:
- HOUSING MATERIAL: UNFILLED NYLON 6, UL 94V-0, IEC 60335-1, 4TH EDITION GLOW WIRE CAPABLE, COLOR - BLACK
  - FINISH: N/A
  - PRODUCT SPECIFICATION: PS-43045
  - PACKAGING SPECIFICATION: PK-43020-001
  - THIS HOUSING MATES WITH MICRO-FIT RECEPTACLE #43025-\*\*\*\*
  - THIS HOUSING TO BE USED WITH MOLEX MALE TERMINAL #43031-\*\*\*\*
  - DESIGNED FOR .055/(1.4) MINIMUM TO A .100/(2.54) MAXIMUM THICK PANEL OR PRINTED CIRCUIT BOARD.
  - SEE SECTION 'D'-'D' FOR TERMINAL ORIENTATION IN HOUSING.
  - PANEL MOUNT FEATURES MUST LOCK ON SIDE OPPOSITE PUNCH SIDE FOR OPTIMUM RETENTION.
  - THIS PART CONFORMS TO CLASS 'B' REQUIREMENTS OF COSMETIC SPECIFICATION PS-45499-002, EXCEPT 2 AND 4 CIRCUIT PARTS CONFORM TO CLASS 'C' SURFACE REQUIREMENTS.



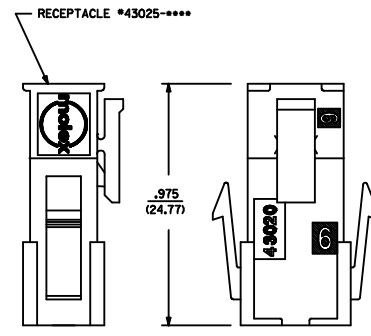
PLUG WITH OPTIONAL PANEL MOUNTS  
ISO VIEW  
(8 CIRCUIT SHOWN)



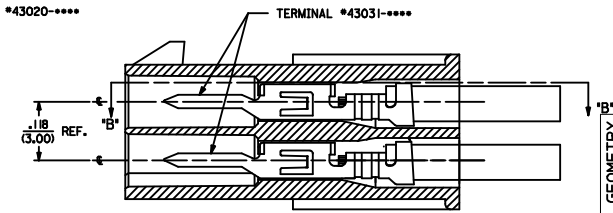
RECOMMENDED PANEL CUT-OUT



SECTION 'B'-'B'



MATED MICRO-FIT CONNECTOR

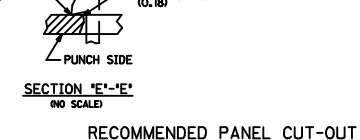
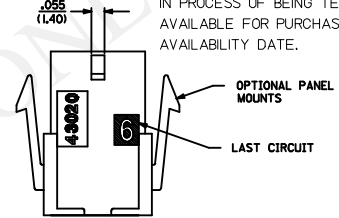
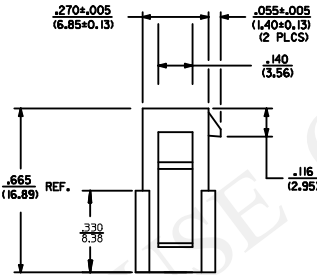
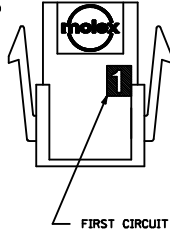
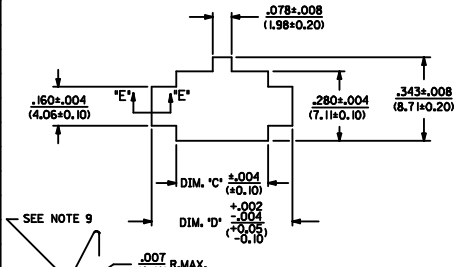
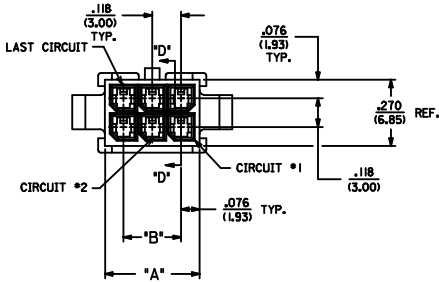


SECTION 'D'-'D' WITH TERMINAL (SCALE: 8X)

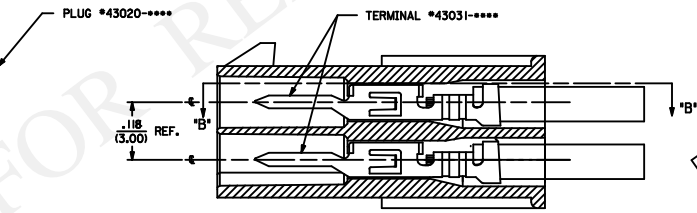
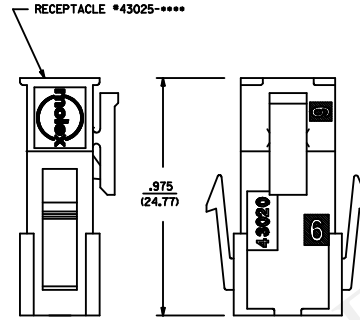
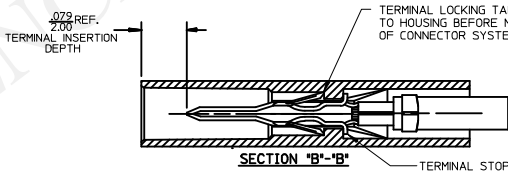
<b>TERMINAL GEOMETRY</b> IEC NO. UCP2015-4271 DRAWN: JDFOX 2015/04/16 CHECKED: SSOUSEK 2015/04/16 APPROVED: FSMITH 2015/05/08	QUALITY SYMBOLS	GENERAL TOLERANCES (UNLESS SPECIFIED)	DIMENSION STYLE	SCALE	DESIGN UNITS	THIRD ANGLE PROJECTION
	▽=0	mm INCH	IN/MM	---	METRIC	☉
	▽=0	4 PLACES ±.010	DRAWN BY DATE	TITLE		
	▽=0	3 PLACES ±.010	MKIPPER 2008/01/18	MICRO-FIT(3,0) PLUG WITH OPTIONAL PANEL MOUNTS HALOGEN-FREE		
	2 PLACES ±0.25 ±.014	CHECKED BY DATE	MATERIAL NO. DOCUMENT NO.			
	1 PLACE ±0.35 ±.---	SSOUSEK 2008/01/21	SEE CHART SD-43020-001			
	0 PLACE ±.---	APPROVED BY DATE	SHEET NO.			
		FSMITH 2010/11/18	1 OF 1			
ANGULAR ±1/2°		DRAFT WHERE APPLICABLE MUST REMAIN WITHIN DIMENSIONS		THIS DRAWING CONTAINS INFORMATION THAT IS PROPRIETARY TO MOLEX INCORPORATED AND SHOULD NOT BE USED WITHOUT WRITTEN PERMISSION		

TOOLING USE (Y/N)	ASSEMBLY ITEM NUMBER	PART CHARACTERISTICS	
		NUMBER OF POSITION	PANEL MOUNT OPTION
YES	43020-0210	2	YES
NO	43020-0211	2	NO
YES	43020-0410	4	YES
NO	43020-0411	4	NO
NO	43020-0610	6	YES
NO	43020-0611	6	NO
NO	43020-0810	8	YES
NO	43020-0811	8	NO
NO	43020-1010	10	YES
NO	43020-1011	10	NO
NO	43020-1210	12	YES
NO	43020-1211	12	NO
YES	43020-1410	14	YES
NO	43020-1411	14	NO
NO	43020-1610	16	YES
NO	43020-1611	16	NO
YES	43020-1810	18	YES
NO	43020-1811	18	NO
NO	43020-2010	20	YES
NO	43020-2011	20	NO
NO	43020-2210	22	YES
NO	43020-2211	22	NO
YES	43020-2410	24	YES
NO	43020-2411	24	NO

CKT. NO.	DIM. 'A'	DIM. 'B'	DIM. 'C'	DIM. 'D'
2	.152/(3.86)	N/A	.166/(4.21)	.311/(7.90)
4	.270/(6.85)	.118/(3.00)	.284/(7.21)	.429/(10.90)
6	.388/(9.85)	.236/(6.00)	.402/(10.21)	.547/(13.89)
8	.506/(12.85)	.354/(9.00)	.520/(13.21)	.665/(16.89)
10	.624/(15.85)	.472/(12.00)	.638/(16.21)	.783/(19.89)
12	.742/(18.85)	.591/(15.00)	.756/(19.21)	.901/(22.89)
14	.860/(21.85)	.709/(18.00)	.874/(22.21)	1.019/(25.88)
16	.978/(24.85)	.827/(21.00)	.992/(25.21)	1.137/(28.88)
18	1.096/(27.85)	.945/(24.00)	1.110/(28.21)	1.255/(31.88)
20	1.215/(30.85)	1.063/(27.00)	1.229/(31.22)	1.373/(34.87)
22	1.333/(33.85)	1.181/(30.00)	1.347/(34.22)	1.491/(37.87)
24	1.451/(36.85)	1.299/(33.00)	1.465/(37.22)	1.609/(40.87)

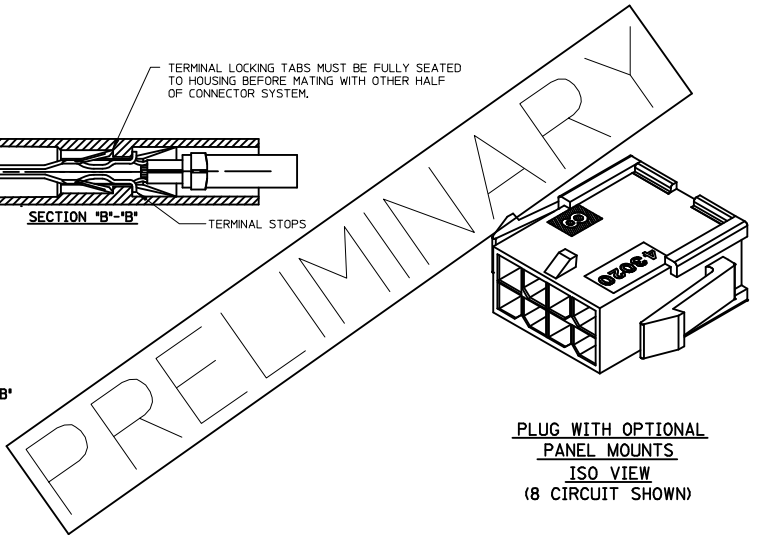


RECOMMENDED PANEL CUT-OUT



SECTION 'D'-'D' WITH TERMINAL (SCALE .80)

MATED MICRO-FIT CONNECTOR



- NOTES:
- HOUSING MATERIAL: UNFILLED NYLON 6, UL 94V-2, IEC 60335-1, 4TH EDITION GLOW WIRE CAPABLE, COLOR - BLACK
  - MATERIAL NUMBERS ON THIS DRAWING ARE GLOW WIRE CAPABLE SINCE INCEPTION
  - FINISH: N/A
  - PRODUCT SPECIFICATION: PS-43045
  - PACKAGING SPECIFICATION: PK-43020-001
  - THIS HOUSING MATES WITH MICRO-FIT RECEPTACLE #43025-\*\*\*\*
  - THIS HOUSING TO BE USED WITH MOLEX MALE TERMINAL #43031-\*\*\*\*
  - DESIGNED FOR .055/(1.4) MINIMUM TO A .100/(2.54) MAXIMUM THICK PANEL OR PRINTED CIRCUIT BOARD.
  - SEE SECTION 'D'-'D' FOR TERMINAL ORIENTATION IN HOUSING.
  - PANEL MOUNT FEATURES MUST LOCK ON SIDE OPPOSITE PUNCH SIDE FOR OPTIMUM RETENTION.
  - THIS PART CONFORMS TO CLASS 'B' REQUIREMENTS OF COSMETIC SPECIFICATION PS-45499-002, WITH THE EXCEPTION THAT FLASH, DISCOLORATION, AND SINK MEET CLASS 'C' REQUIREMENTS.
  - SOME HOUSINGS MAY HAVE SMALL GATE BLEMISH NEAR THE GATE THAT DOES NOT AFFECT FUNCTIONALITY.
  - MATERIAL NUMBERS INDICATED WITH 'YES' IN TOOLED COLUMN ARE IN PROCESS OF BEING TESTED AND QUALIFIED ARE NOT YET AVAILABLE FOR PURCHASE. CONTACT MOLEX FOR ANTICIPATED AVAILABILITY DATE.

PRELIMINARY EC NO: UCP2015-5328 DRAWN: JMONTI 2015/06/16 CHKD: BANDERSON 2015/06/16 APPR: JMONTI 2015/06/26	QUALITY SYMBOLS ▽ = 0 ▽ = 0 ▽ = 0	GENERAL TOLERANCES (UNLESS SPECIFIED) mm    INCH 4 PLACES ± --- ± --- 3 PLACES ± --- ± .010 2 PLACES ± 0.25 ± .014 1 PLACE ± 0.35 ± --- 0 PLACE ± --- ± --- ANGULAR ±1/2° DRAFT WHERE APPLICABLE MUST REMAIN WITHIN DIMENSIONS	DIMENSION STYLE IN/MM DRAWN BY DATE JMONTI 2015/06/16 CHECKED BY DATE BANDERSON 2015/06/16 APPROVED BY DATE JMONTI 2015/06/26	SCALE 4:1 DESIGN UNITS METRIC THIRD ANGLE PROJECTION	MICRO-FIT(3.0) PLUG WITH OPTIONAL PANEL MOUNTS GLOW WIRE <b>molex</b> DOCUMENT NO. SD-43020-002 SHEET NO. 1 OF 1		
						MATERIAL NO. <b>SEE CHART</b> SIZE C	
							THIS DRAWING CONTAINS INFORMATION THAT IS PROPRIETARY TO MOLEX INCORPORATED AND SHOULD NOT BE USED WITHOUT WRITTEN PERMISSION