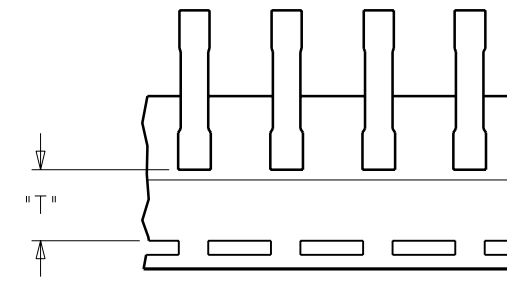
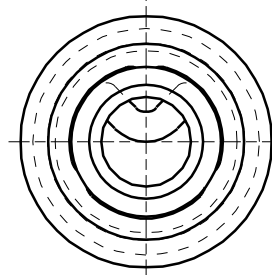
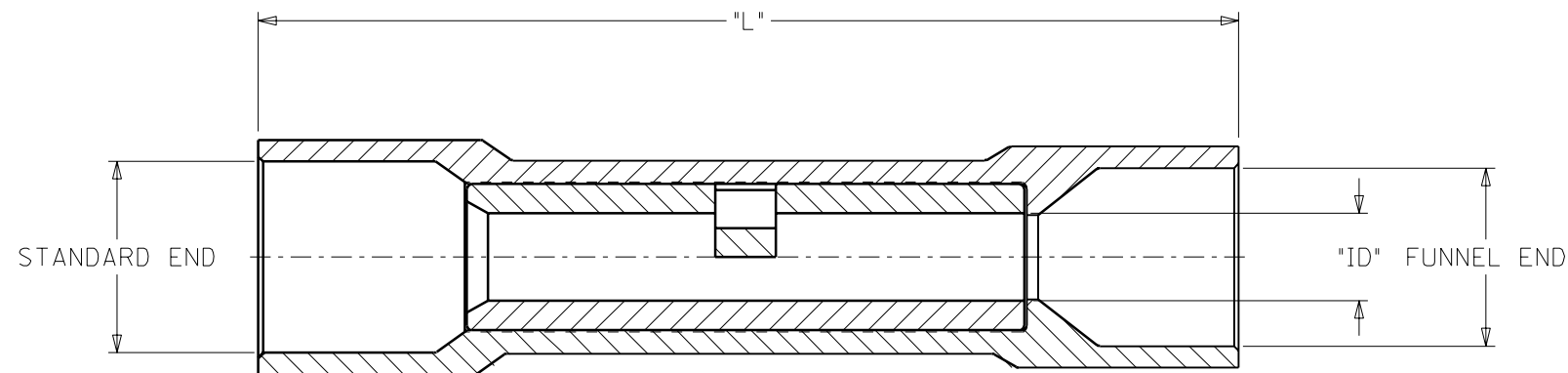


MATERIAL NUMBER	ALTERNATE NUMBER	WIRE SIZE AWG	INSULATION COLOR	CONNECTOR ID	MAX. WIRE INSUL. DIA.		LENTH "L"	TAPE HEIGHT "T"	DESCRIPTION
					STANDARD END	FUNNEL END			
F 192020010	AS-932	22-18	LIGHT RED	.061	.161	.147	1.07	----	LOOSE PIECE
F 192020011	AS-932-DK	22-18	DARK RED	.061	.161	.147	1.07	----	LOOSE PIECE
192020012	AS-932-DKT	22-18	DARK RED	.061	.161	.147	1.07	.480	TAPE MOUNTED
192020026	BS-942	16-14	LIGHT BLUE	.087	.199	.185	1.07	----	LOOSE PIECE
192020030	BS-942T	16-14	LIGHT BLUE	.087	.199	.185	1.07	.480	TAPE MOUNTED
192020027	BS-942-DK	16-14	DARK BLUE	.087	.199	.185	1.07	----	LOOSE PIECE
192020029	BS-942-DKT	16-14	DARK BLUE	.087	.199	.185	1.07	.480	TAPE MOUNTED
192020028	BS-942-DKBT	16-14	DARK BLUE	.087	.199	.185	1.07	.480	TAPE MOUNTED LARGE REEL
E 192020131	BS-942-B	16-14	BLUE	.087	.199	.185	1.07	----	LOOSE PIECE
192020130	BS-932-BBT	16-14	BLUE	.087	.199	.185	1.07	.480	TAPE MOUNTED LARGE REEL
192020045	CS-952	12-10	YELLOW	.138	.276	.262	1.15	----	LOOSE PIECE
192020046	CS-952-DK	12-10	DARK YELLOW	.138	.276	.262	1.15	----	LOOSE PIECE
192020047	CS-952-DKT	12-10	DARK YELLOW	.138	.276	.262	1.15	.440	TAPE MOUNTED
192020048	CS-952-DKBT	12-10	DARK YELLOW	.138	.276	.262	1.15	.440	TAPE MOUNTED LARGE REEL
192020141	CS-952 BULK	12-10	YELLOW	.138	.276	.262	1.15	----	BULK PACKED, 2500 PER PACKAGE
D 192020142	CS-952-DK BULK	12-10	DARK YELLOW	.138	.276	.262	1.15	----	BULK PACKED, 2500 PER PACKAGE



PARTS ON TAPE

NOTES:
 1. MATERIAL: COPPER.
 2. PLATING: ELECTRON-TIN.
 3. INSULATION: 6/6 NYLON

CUSTOMER DRAWING

DIMENSIONS SHOWN (METRIC) INCH		REVISIONS													
UNLESS OTHERWISE SPECIFIED TOLERANCES: ANGULAR ± 1/2°		TITLE													
<table border="1"> <thead> <tr> <th></th> <th>INCH</th> <th>METRIC</th> </tr> </thead> <tbody> <tr> <td>3 PLACE</td> <td>± .005</td> <td>± ---</td> </tr> <tr> <td>2 PLACE</td> <td>± .01</td> <td>± 0.13</td> </tr> <tr> <td>1 PLACE</td> <td>± ---</td> <td>± 0.25</td> </tr> </tbody> </table>			INCH	METRIC	3 PLACE	± .005	± ---	2 PLACE	± .01	± 0.13	1 PLACE	± ---	± 0.25	FUNNEL ENTRY SEAMLESS NYLAKRIMP BUTT CONNECTOR	
	INCH	METRIC													
3 PLACE	± .005	± ---													
2 PLACE	± .01	± 0.13													
1 PLACE	± ---	± 0.25													
DRAFT WHERE APPLICABLE MUST REMAIN WITHIN DIMENSIONS		<table border="1"> <tr> <td colspan="2">molex ETC INC. PINELLAS PARK, FLA. 33781 U.S.A.</td> <td>SHEET NO. 1 OF 1</td> <td>DATE 00/07/18</td> </tr> </table>		molex ETC INC. PINELLAS PARK, FLA. 33781 U.S.A.		SHEET NO. 1 OF 1	DATE 00/07/18								
molex ETC INC. PINELLAS PARK, FLA. 33781 U.S.A.		SHEET NO. 1 OF 1	DATE 00/07/18												
<table border="1"> <tr> <td>DRWG. BY HEB</td> <td>CHK'D. BY RWD</td> </tr> <tr> <td>APP'D. BY RWD</td> <td>SCALE NO:NE</td> </tr> </table>		DRWG. BY HEB	CHK'D. BY RWD	APP'D. BY RWD	SCALE NO:NE	<table border="1"> <tr> <td>PART NO. SEE TABLE</td> <td>DRWG. NO. SD-19202-001</td> </tr> </table>		PART NO. SEE TABLE	DRWG. NO. SD-19202-001						
DRWG. BY HEB	CHK'D. BY RWD														
APP'D. BY RWD	SCALE NO:NE														
PART NO. SEE TABLE	DRWG. NO. SD-19202-001														
FILE NAME SD19202001 DGN		THIS DRAWING CONTAINS INFORMATION THAT IS PROPRIETARY TO MOLEX-ETC INC. AND SHOULD NOT BE USED WITHOUT WRITTEN PERMISSION.													
		<table border="1"> <tr> <td>DIV. ET</td> <td>SIZE B</td> </tr> </table>		DIV. ET	SIZE B										
DIV. ET	SIZE B														

A	RELEASE NEW DOC. ETC2001-0075 2000/07/18 HEB
LTR.	REVISIONS

Mouser Electronics

Authorized Distributor

Click to View Pricing, Inventory, Delivery & Lifecycle Information:

[Molex:](#)

[19202-0026](#)