

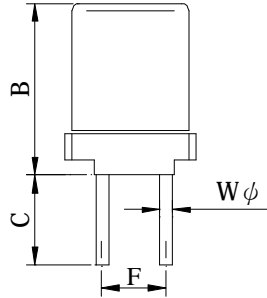
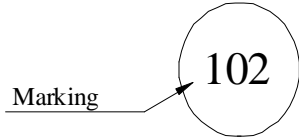
SPECIFICATION FOR APPROVAL

REF : 20100118-B

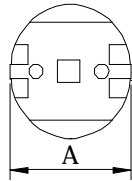
PAGE: 1

PROD. NAME	SHIELDED INDUCTOR	ABC'S DWG NO. ABC'S ITEM NO.	FR1013□□□□L□-□□□
---------------	--------------------------	---------------------------------	------------------

I . CONFIGURATION & DIMENSIONS :



A :	10.0±0.5	m/m
B :	13.0±0.5	m/m
C :	5.0±2	m/m
F :	5.0±0.5	m/m
Wφ :	0.7±0.05	m/m

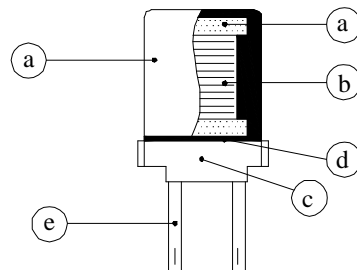


II . SCHEMATIC DIAGRAM :



III . MATERIALS :

- a . Core : Ferrite core
- b . Wire : Enamelled copper wire (class F)
- c . Bobbin : Phenolic
- d . Adhesive : Epoxy resin
- e . Lead : Sn/Ag/Cu
- f . Remark : Products comply with RoHS' requirements



IV . GENERAL SPECIFICATION :

- a . Temper ture rise : 20°C max. at rated current.
- b . Storage temp. : -25 ~ +85°C
- c . Operaing temp. : -40 ~ +105°C

AR-001A

SPECIFICATION FOR APPROVAL

REF : 20100118-B

PAGE: 2

PROD. NAME	SHIELDED INDUCTOR	ABC'S DWG NO.	FR1013□□□□L□-□□□
		ABC'S ITEM NO.	

V . ELECTRICAL SPECIFICATION :

DWG No.	Inductance (mH)	Q min.	Test Freq. (Hz)		SRF (KHz) min.	RDC (Ω) max.	IDC (mA) max.
			L	Q			
FR1013102KL□-□□□	1.0 ±10%	40	1K	252.0K	740	4.0	150
FR1013122KL□-□□□	1.2 ±10%	40	1K	252.0K	670	5.0	140
FR1013152KL□-□□□	1.5 ±10%	40	1K	252.0K	500	6.0	130
FR1013182KL□-□□□	1.8 ±10%	40	1K	252.0K	480	7.0	115
FR1013222KL□-□□□	2.2 ±10%	40	1K	252.0K	410	10.0	100
FR1013272KL□-□□□	2.7 ±10%	40	1K	252.0K	390	11.0	95
FR1013332KL□-□□□	3.3 ±10%	30	1K	252.0K	350	12.0	85
FR1013392KL□-□□□	3.9 ±10%	30	1K	252.0K	340	13.0	80
FR1013472KL□-□□□	4.7 ±10%	30	1K	252.0K	320	23.0	70
FR1013562KL□-□□□	5.6 ±10%	30	1K	252.0K	310	25.0	65
FR1013682KL□-□□□	6.8 ±10%	20	1K	252.0K	280	30.0	60
FR1013822KL□-□□□	8.2 ±10%	20	1K	252.0K	260	32.0	50
FR1013103KL□-□□□	10.0 ±10%	50	1K	79.6K	240	35.0	45
FR1013123KL□-□□□	12.0 ±10%	50	1K	79.6K	210	50.0	40
FR1013153KL□-□□□	15.0 ±10%	50	1K	79.6K	190	58.0	38
FR1013183KL□-□□□	18.0 ±10%	50	1K	79.6K	180	63.0	35
FR1013223KL□-□□□	22.0 ±10%	40	1K	79.6K	140	90.0	30
FR1013273KL□-□□□	27.0 ±10%	40	1K	79.6K	130	100.0	28
FR1013333KL□-□□□	33.0 ±10%	40	1K	79.6K	125	115.0	25
FR1013393KL□-□□□	39.0 ±10%	30	1K	79.6K	120	185.0	23
FR1013473KL□-□□□	47.0 ±10%	30	1K	79.6K	110	205.0	22

1). □ : Packing information... [A] Bulk

2). "- □□□":Reference code

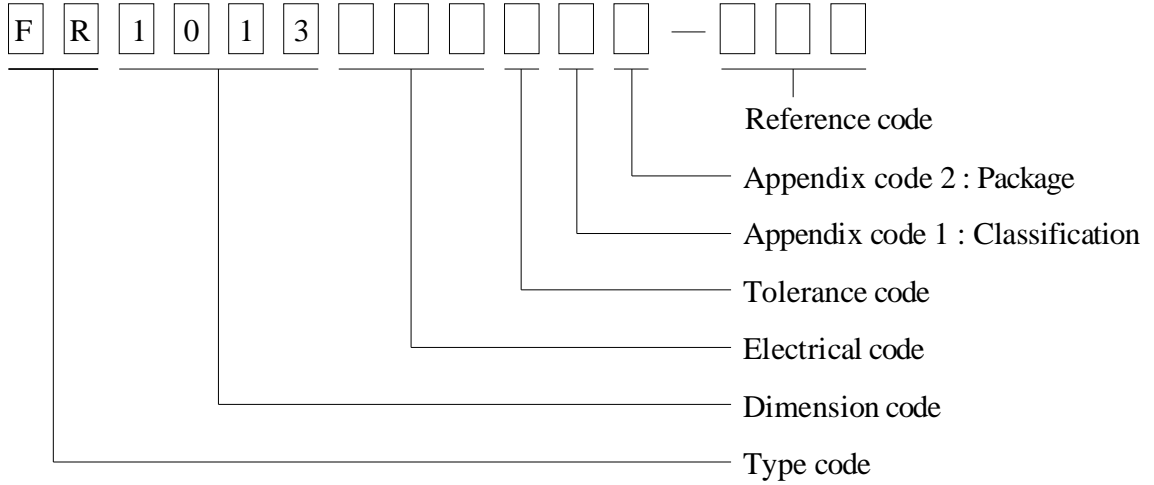
SPECIFICATION FOR APPROVAL

REF : 20100118-B

PAGE: 3

PROD. NAME	SHIELDED INDUCTOR	ABC'S DWG NO.	FR1013□□□□L□-□□□
		ABC'S ITEM NO.	

VI . DWGING NUMBER EXPRESSION :



Appendix code 1 : Product Classification

- L : Lead Free Standard products comply with RoHS' requirements
- 1 ~ 9 : Lead Free Special products comply with RoHS' requirements

Appendix code 2 : Package Information

Code	Inner package	Inner package Q'TY	Remark
A	Tray	110 pcs	

SPECIFICATION FOR APPROVAL

REF : 20100118-B

PAGE: 4

PROD. NAME	SHIELDED INDUCTOR	ABC'S DWG NO.	FR1013□□□□L□-□□□
		ABC'S ITEM NO.	

VII . UL CARD :

OBMW2
Magnet Wire-Component

JUNG SHING WIRE CO LTD
231 CHUNG CHENG RD, SEC 3 JEN-TEH HSIANG, TAINAN
HSIEN TAIWAN

September 8, 2000

E174837

Mtl Dsg	Mark Dsg	BC	Coat Typ	ANSI Type	Temp Class
AIW	---	Polyamideimide	OC	MW81-C	220
CFUEWB	---	Polyurethane	---	MW75C	130
EIAIW	---	Polyesterimide	Polyamideimide	MW35C	200
EILOCKY	---	Polyesterimide	Polyamide	---	180
EILOCKW	---	Polyesterimide	Modified Epoxy	---	200
EIW	---	Polyesterimide	---	---	220
EIW-2	---	Polyesterimide	---	MW74-C	200
FL.EILOCKY	---	Modified Polyester	Polyamide	---	155
LSFFW	---	Polyurethane	---	MW79-C	155
LSUEW	---	Polyurethane	---	---	130
PEW	---	Polyester	---	---	155
PEY	---	Polyester	Nylon	MW24-C	155
SF.FLW	---	Modified Polyester	---	MW26C	155
SF.EIW	---	Polyesterimide	---	MW77C	180
SF.BY@	---	Modified Polyester	Nylon	MW27-C	155
SF.FLY@	---	Modified Polyester	Nylon	MW27-C	155
SF.BLOCKBS	---	Modified Polyester	Modified Polyamide	---	155
SF.EILOCKY#	---	Polyesterimide	Polyamide	---	180
SF.EILOCKBS	---	Polyesterimide	Modified Polyamide	---	180
SF.BW@	---	Modified Polyester	---	MW26C	155
SFFW	---	Polyurethane	---	MW79	155

287806002

Page 1 of 2

A not-for-profit organization dedicated to public safety and committed to quality service.

Mtl Dsg	Mark Dsg	BC	Coat Typ	ANSI Type	Temp Class
SFFY	---	Polyurethane	Polyamide	MW80C	155
UEW-1	---	Polyurethane	---	MW2-C	105
UEW-2	---	Polyurethane	---	---	130
UEW-4	---	Polyurethane	---	MW75C	130
UEY	---	Polyurethane	Nylon	MW28-C	130
UEY-2	---	Polyurethane	Polyamide	MW28-C	130

@-May be suffixed by LZ; #- May be suffixed by LZ, EL or LZI.
 LZ - Signifies magned wires twisted together; EL - signifies base coated magnet wire laid parallel with top coat applied overall; LZL - signifies base coated magnet wire twisted together and covered with top coat overall.

Marking: Company name or trademarks or 榮星電線 , material designation or marked designation on packaed or reel, and Recognized Component Mark.

See General Information Preceding These Recognitions
 For use only in equipment where the acceptability of the combination is determined by Underwriters Laboratories Inc.

287806002

Page 2 of 2

OBMW2E174837
September 8 , 2000

AR-001A

