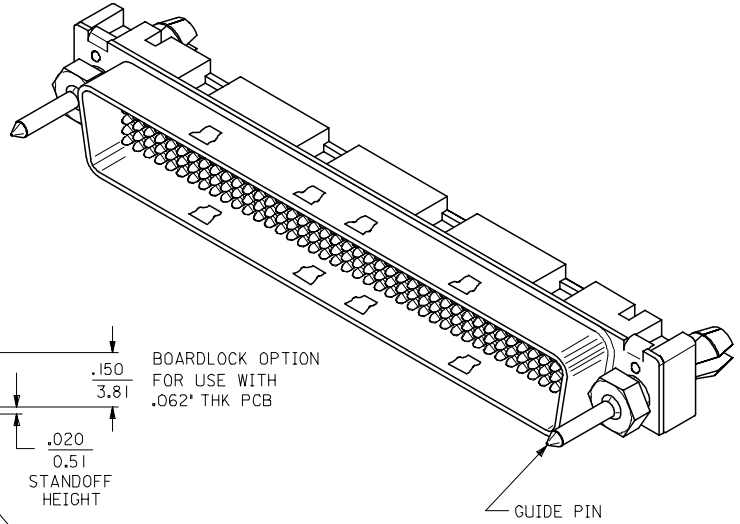
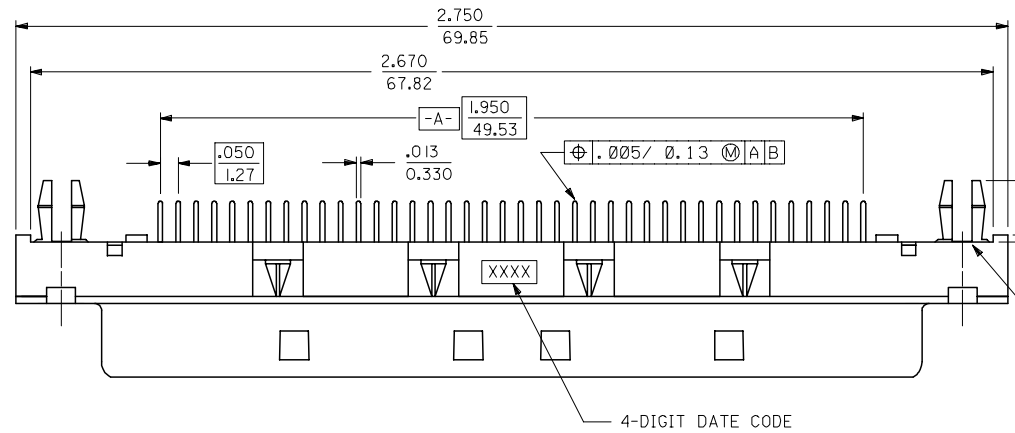


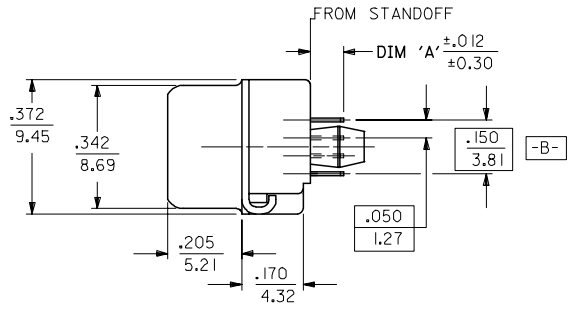
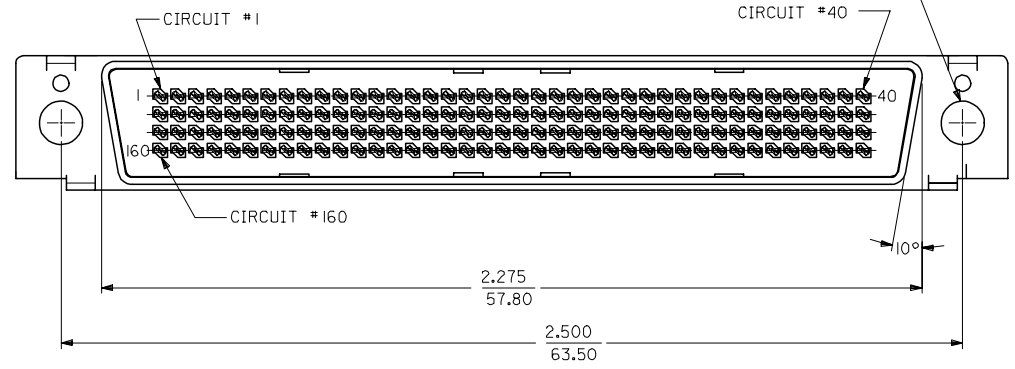
13 12 11 10 9 8 7 6 5 4 3 2 1

J I H G F E D C B A



NOTE: WHEN USING BOARDLOCK OPTION, THIS HARDWARE IS REQUIRED FOR EFFECTIVE ELECTRICAL GROUNDING. SEE SDA-71628-****.

M3 INTERNALLY THREADED INSERT RETAINED IN HOUSING. BOARDLOCK OPTION SHOWN.



2	G
1	G
SHT	REV

ENC. NUMBER	ITEM NUMBER	DIM 'A'	OPTIONS	
			M3 THREADED INSERT	BOARDLOCK
A-71624-1000	051-25-1030	.092/ 2.34	YES	NO
A-71624-1001	71624-1001	.092/ 2.34	YES	YES
A-71624-1002	051-25-1032	.092/ 2.34	NO	NO
A-71624-1003	71624-1003	.125/ 3.18	YES	NO
A-71624-1013	71624-1013	.177/ 4.50	YES	NO
A-71624-1004	71624-1004	.125/ 3.18	YES	YES
A-71624-1005	71624-1005	.125/ 3.18	NO	NO

MODIFY PACKAGING
 EC NO: UCP2007-0515
 DRAWN: SIBARRA 2006/09/18
 CHKD: BORGAN 2006/09/26
 APPR: SMILLER 2006/09/27

QUALITY SYMBOLS
 ▽=0
 ▽=0

GENERAL TOLERANCES (UNLESS SPECIFIED)

	mm	INCH
4 PLACES	± .010	± .0004
3 PLACES	± .012	± .0005
2 PLACES	± .015	± .0006
1 PLACE	± .020	± .0008

ANGULAR ±1/2°

DRAFT WHERE APPLICABLE MUST REMAIN WITHIN DIMENSIONS

DIMENSION STYLE
 IN/MM

SCALE
 4:1

DESIGN UNITS
 INCH

THIRD ANGLE PROJECTION

DRAWN BY
 MOS

DATE
 1993/01/08

CHECKED BY
 BIXLER

DATE
 1993/01/08

APPROVED BY
 CAB

DATE
 1993/01/08

MATERIAL NO.
 SEE TABLE

DOCUMENT NO.
 SDA-71624-****

SHEET NO.
 1 OF 2

.050 PITCH LFH 160 CKT
 VERTICAL I/O MALE
 SALES ASSEMBLY

MOLEX INCORPORATED

THIS DRAWING CONTAINS INFORMATION THAT IS PROPRIETARY TO MOLEX INCORPORATED AND SHOULD NOT BE USED WITHOUT WRITTEN PERMISSION

12 11 10 9 8 7 6 5 4 3 2 1

NOTES:

1) MATERIALS:

HOUSING: GLASS FILLED LCP (LIQUID CRYSTAL POLYMER), UL 94V-0, BLACK.
 MOLDED STICK: GLASS FILLED LCP (LIQUID CRYSTAL POLYMER), UL94V-0, BLACK.
 MALE CONTACT: PHOS. BRONZE .012±.0005 THICK.
 OUTER SHELL: LOW CARBON STEEL.
 THREADED BOARD LOCK: BRASS

2) PLATING :

TERMINAL: .000030/ 0.00076 MINIMUM GOLD IN SELECTIVE AREA;
 .000100/ 0.00254 MINIMUM TIN IN SELECTIVE AREA;
 OVER NICKEL UNDERPLATE OVERALL.

OUTER SHELL: .000100/ 0.00254 MINIMUM BRIGHT NICKEL
 OVER COPPER FLASH OPTIONAL.

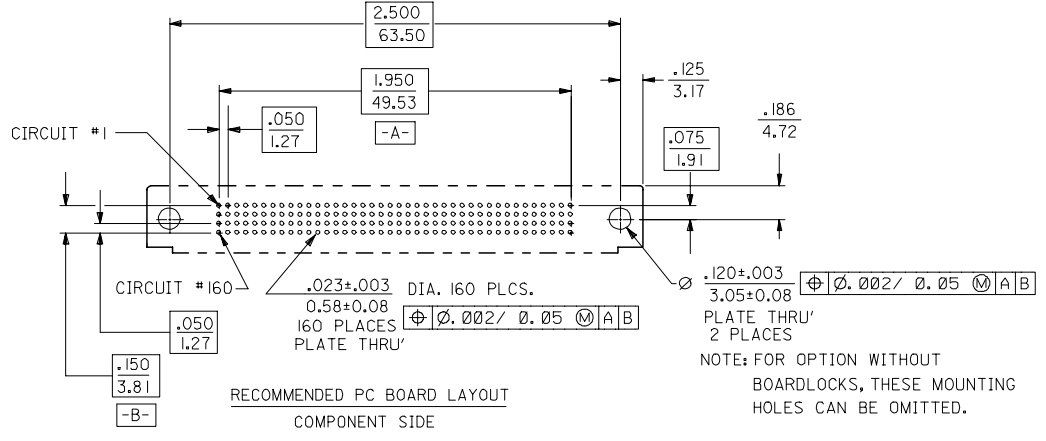
BOARDLOCK: .000150-.000200/ 0.00381-0.00508 TIN
 OVER .000050/ 0.00127 MINIMUM NICKEL.

3) THIS PART CONFORMS TO MOLEX PRODUCT SPECIFICATION PS-71626.

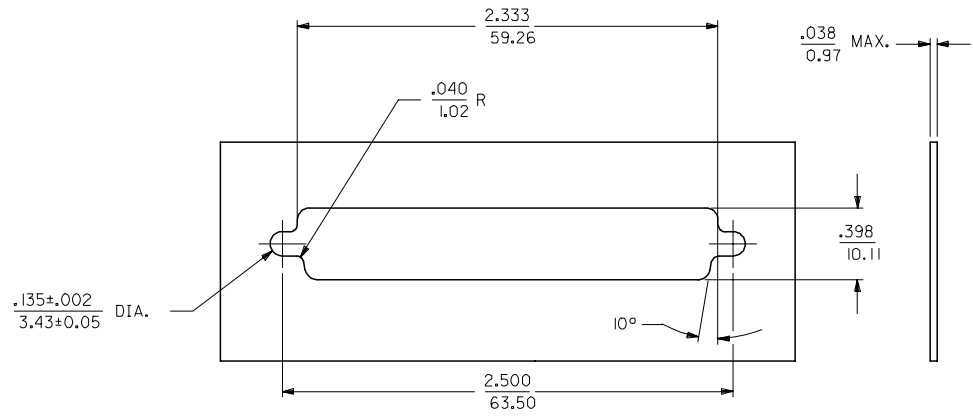
4) PACKAGING SPECIFICATION PK-70873-297 APPLIES.

NOTE FOR LEAD FREE CONVERSION:

THE PRIMARY SHIPPING CARTON WILL BE
 LABELED *COMPLIANT TO RoHS DIRECTIVE
 2002/95/EC AND ELV ANNEX II OF
 DIRECTIVE 2000/53/EC*. CARTONS
 WITHOUT THIS LABEL MAY CONTAIN
 PRODUCT WITH LEAD.



NOTE: FOR OPTION WITHOUT BOARDLOCKS, THESE MOUNTING HOLES CAN BE OMITTED.



PANEL CUT-OUT DIMENSIONS

ALL TOLERANCES ±.003/ 0.08 UNLESS OTHERWISE STATED.

MODIFY PACKAGING EC NO: UCP2007-0515 DRWNS: BARRA 2006/09/18 CHKD: MORGAN 2006/09/26 APPR: SMILLER 2006/09/27	QUALITY SYMBOLS ▽=0 ▽=0	GENERAL TOLERANCES (UNLESS SPECIFIED)		DIMENSION STYLE IN/MM		SCALE 2:1	DESIGN UNITS INCH	THIRD ANGLE PROJECTION		
		4 PLACES ± --- ± ---	3 PLACES ± --- ± ---	2 PLACES ± --- ± ---	1 PLACE ± --- ± ---	DRAWN BY SCHMIDGALL	DATE 1993/01/08	TITLE .050 PITCH LFH 160 CKT VERTICAL I/O MALE SALES ASSEMBLY		
		ANGULAR ±1/2°				CHECKED BY BIXLER	DATE 1993/01/08	MATERIAL NO. CAB		
		DRAFT WHERE APPLICABLE MUST REMAIN WITHIN DIMENSIONS				APPROVED BY CAB	DATE 1993/01/08	MOLEX INCORPORATED		
SEE TABLE				DOCUMENT NO. SDA-71624-****		SHEET NO. 2 OF 2				