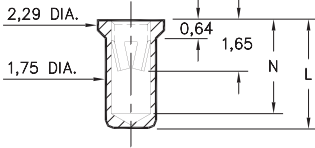


### 0331/9353

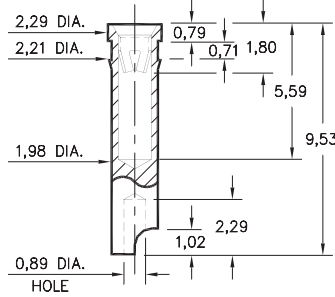


Basic Part Number	Length L	Depth N
0331-0	3,81	3,23
9353-0	4,32	3,73

**X3XX-X-15-XX-18-XX-10-0**

Solder mount in 1,80 min. mounting hole

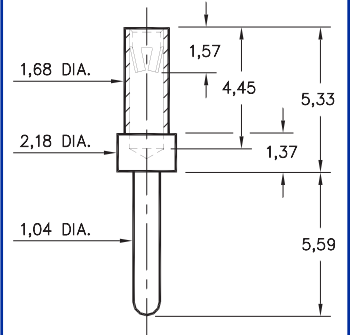
### 7405



**7405-0-18-XX-18-XX-10-0**

Press-fit in 2,13 mounting hole

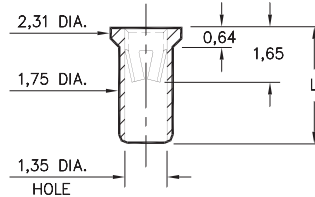
### 3450



**3450-0-15-XX-18-XX-04-0**

Solder mount in 1,09 min. mounting hole

### 9354/7406

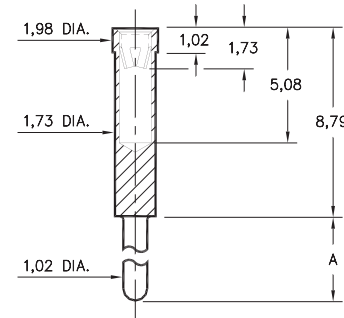


Basic Part Number	Length L
7406-0	3,05
9354-0	4,32

**XXXX-0-15-XX-18-XX-10-0**

Solder mount in 1,80 min. mounting hole

### 0319

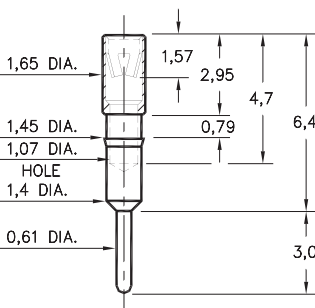


Basic Part Number	Length A
0319-0	6,1
0319-1	7,11

**0319-X-15-XX-18-XX-04-0**

Solder mount in 1,07 min. mounting hole

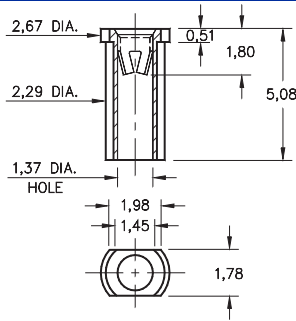
### 1313



**1313-0-15-XX-18-XX-04-0**

Press-fit in 1,42 mounting hole

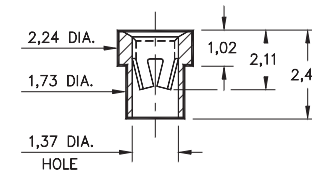
### 6628



**6628-0-18-XX-18-XX-10-0**

Surface mount  
Also available on 12mm wide carrier tape: 3,700 parts per 330mm reel.  
Order as: 6628-0-58-XX-18-XX-10-0

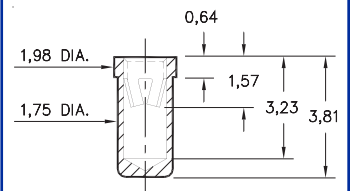
### 3520



**3520-0-15-XX-18-XX-10-0**

Solder mount in 1,78 min. mounting hole

### 8331



**8331-0-15-XX-18-XX-10-0**

Solder mount in 1,80 min. mounting hole

## SPECIFICATIONS

**SHELL MATERIAL:**  
Brass Alloy 360, 1/2 Hard

**CONTACT MATERIAL:**  
Beryllium Copper Alloy 172, HT

**DIMENSION IN INCHES TOLERANCES ON:**  
LENGTHS: ±0,13  
DIAMETERS: ±0,05  
ANGLES: ± 2°

**ORDER CODE: XXXX - X - 1X - XX - 18 - XX - XX - 0**

**BASIC PART #**

**SPECIFY SHELL FINISH:**  
01 5,08µm TIN/LEAD OVER NICKEL  
◇ 80 5,08µm TIN OVER NICKEL (RoHS)  
◇ 15 0,25µm GOLD OVER NICKEL (RoHS)

**SPECIFY CONTACT FINISH:**  
01 5,08µm TIN/LEAD OVER NICKEL  
◇ 80 5,08µm TIN OVER NICKEL (RoHS)  
◇ 27 0,76µm GOLD OVER NICKEL (RoHS)



**CONTACT**

#18 CONTACT (DATA ON PAGE 222)