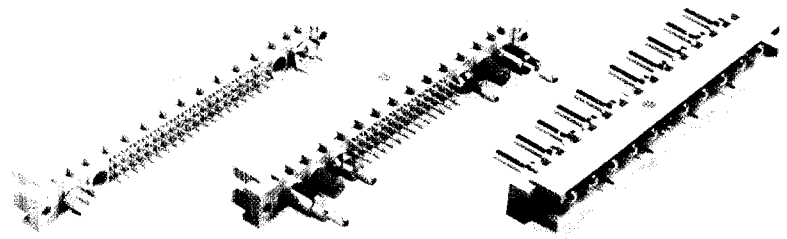


# Inverse Type Gds A-M

Number of contacts

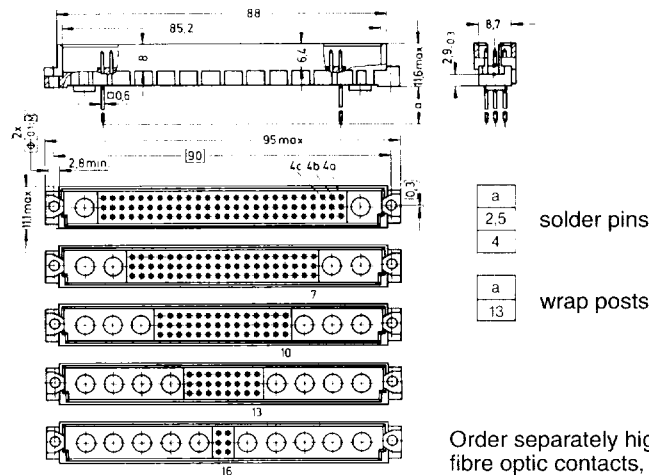
78 + 2, 60 + 4  
42 + 6, 24 + 8  
6 + 10



Male connectors

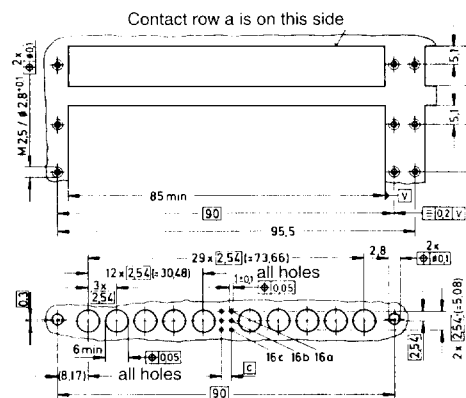
Identification	Number of contacts	Contact arrangement	Performance levels according to DIN 41 612, explanations page 10		
			Part No. 3	2	1
Male connector with solder pins 2.5 mm	78 + 2		09 73 178 7902	09 73 178 6902	09 73 178 2902*
	60 + 4		09 73 160 7902	09 73 160 6902	09 73 160 2902*
	42 + 6		09 73 142 7902	09 73 142 6902	09 73 142 2902*
	24 + 8		09 73 124 7902	09 73 124 6902	09 73 124 2902*
	6 + 10		09 73 106 7902	09 73 106 6902	09 73 106 2902*
Male connector with solder pins 4.0 mm	78 + 2		09 73 178 7903	09 73 178 6903	09 73 178 2903*
	60 + 4		09 73 160 7903	09 73 160 6903	09 73 160 2903*
	42 + 6		09 73 142 7903	09 73 142 6903	09 73 142 2903*
	24 + 8		09 73 124 7903	09 73 124 6903	09 73 124 2903*
	6 + 10		09 73 106 7903	09 73 106 6903	09 73 106 2903*
Male connector with wrap posts 13 mm	78 + 2		09 73 178 7907	09 73 178 6907	09 73 178 2907*
	60 + 4		09 73 160 7907	09 73 160 6907	09 73 160 2907*
	42 + 6		09 73 142 7907	09 73 142 6907	09 73 142 2907*
	24 + 8		09 73 124 7907	09 73 124 6907	09 73 124 2907*
	6 + 10		09 73 106 7907	09 73 106 6907	09 73 106 2907*

## Dimensions

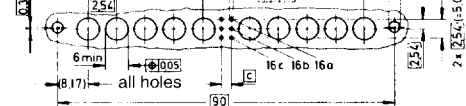


Order separately high current, high voltage, coaxial and fibre optic contacts, see page 42

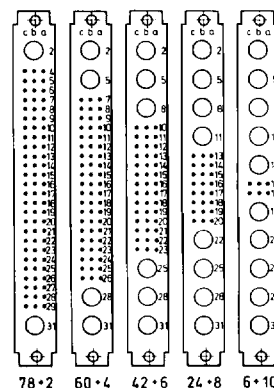
## Panel cut out



## Board drillings



## Contact arrangement View from termination side



	c
78 + 2	25 x 2,54 = 63,5
60 + 4	19 x 2,54 = 48,26
42 + 6	13 x 2,54 = 33,02
24 + 8	7 x 2,54 = 17,78
6 + 10	1 x 2,54 = 2,54

Dimensions in mm

Mating conditions page 10

\* Not normally kept in stock  
Male connectors with press-in termination see catalogue „har-press“

Identification	Part No. Male contacts for...	Performance level 2 Female contacts for...	Drawing	Dimensions in mm												
High current contacts for straight crimp terminations	10 A 09 03 000 6113 20 A 09 03 000 6114 40 A 09 03 000 6115	..female connector 09 03 000 6213 09 03 000 6214 09 03 000 6215														
First mate contact	10 A 09 03 000 6123 20 A 09 03 000 6124 40 A 09 03 000 6125			<table border="1"> <tr> <td></td> <td>Ø A</td> <td>Ø B</td> </tr> <tr> <td>10 A</td> <td>1,85</td> <td>2,55</td> </tr> <tr> <td>20 A</td> <td>2,8</td> <td>3,7</td> </tr> <tr> <td>40 A</td> <td>4,4</td> <td>5,6</td> </tr> </table>		Ø A	Ø B	10 A	1,85	2,55	20 A	2,8	3,7	40 A	4,4	5,6
	Ø A	Ø B														
10 A	1,85	2,55														
20 A	2,8	3,7														
40 A	4,4	5,6														
Crimping tool for high current contacts	09 99 000 0196															
High current contacts for straight solder terminations	10 A 09 03 000 6101 20 A 09 03 000 6102 40 A 09 03 000 6103	..female connector 09 03 000 6201 09 03 000 6202 09 03 000 6203														
First mate contact	10 A 09 03 000 6111 20 A 09 03 000 6122 40 A 09 03 000 6133			<table border="1"> <tr> <td></td> <td>Ø</td> </tr> <tr> <td>10 A</td> <td>1,7</td> </tr> <tr> <td>20 A</td> <td>2,8</td> </tr> <tr> <td>40 A</td> <td>4,8</td> </tr> </table>		Ø	10 A	1,7	20 A	2,8	40 A	4,8				
	Ø															
10 A	1,7															
20 A	2,8															
40 A	4,8															
High current contacts for printed circuit terminations	10 A 09 03 000 6104	..male connector		<p>1) Solder pins for hole <math>\varnothing 1 \pm 0.1</math> mm</p>												
High voltage contacts for straight solder terminations	2.8 kV 09 03 000 6140	..female connector 09 03 000 6240		Wire gauge max. 0.5 mm <sup>2</sup>												
Coaxial contacts for straight solder and/or crimp terminations	09 03 000 6160	..female connector ..male connector without knurled area 09 03 000 6260		with/without knurled area												
Coaxial contacts for angled solder and/or crimp terminations	09 03 000 6161	09 03 000 6274 09 03 000 6261*														
Coaxial contacts for printed circuit terminations	09 03 000 6162*	09 03 000 6262														
Crimping tool for coaxial contacts	09 99 000 0194			1) Solder pins for hole $\varnothing 1 \pm 0.1$ mm												
Removal tool for contacts	09 99 000 0174															

Characteristics for contacts and wires	Coaxial contacts	High current contacts	High voltage contacts
Impedance	50 Ω	—	—
Insulation resistance	10 <sup>12</sup> Ω	—	—
Contact resistance	—	max. 1.5 mΩ	—
Internal wire	≅ 10 mΩ	—	≅ 3 mΩ
External wire	≅ 3 mΩ	—	—
Working voltage	250 V ~	—	2.8 kV
Voltage resistance	750 V ~	—	3.8 kV
Max. working current	1.5 A	40 A	1.5 A
Contact finish	perf. level 2	perf. level 2	perf. level 2
Cable group	2	—	—

Cable group 2 flexible wires	Shell Ø	Screening Ø	Dielectric Ø	Internal wire Ø	Hexagonal crimp Spanner width
RG 174 A/U	2.5	2.0	1.5	0.48	3.25
RG 188 A/U	2.6	2.0	1.5	0.54	3.25
RG 316/U	2.5	2.0	1.5	0.54	3.25