

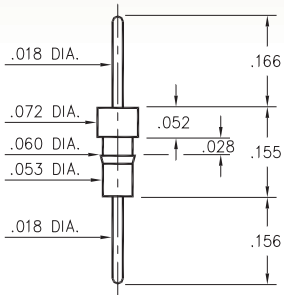
# MALE PCB PINS

## PRINTED CIRCUIT PINS

### 0504/0505

050X-0-00-XX-00-00-03-0

Press-fit in .057 mounting hole

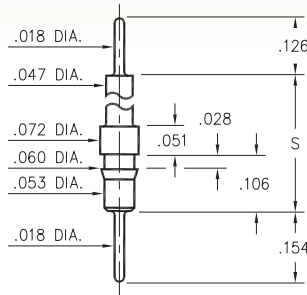


Basic Part Number	Pin Material
0504-0	Phosphor Bronze 544
0505-0	Brass 360

### 5510/5511

551X-0-00-XX-00-00-03-0

Press-fit in .057 mounting hole

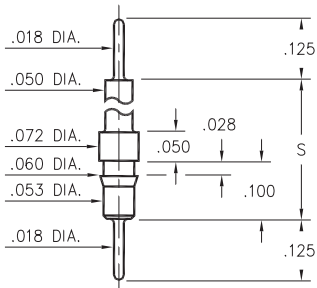


Basic Part Number	Standoff Height S
5510-0	.331
5511-0	.606

### 4259

4259-X-00-XX-00-00-03-0

Press-fit in .057 mounting hole

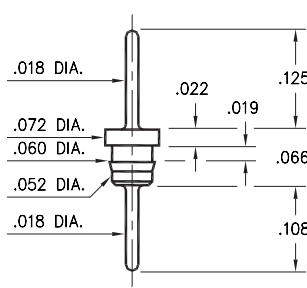


Basic Part Number	Standoff Height S
4259-1	.210
4259-2	.335
4259-3	.585
4259-4	.835

### 3516

3516-0-00-XX-00-00-03-0

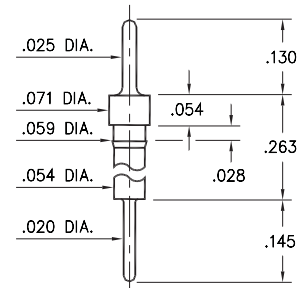
Press-fit in .057 mounting hole



### 8859

8859-0-00-XX-00-00-03-0

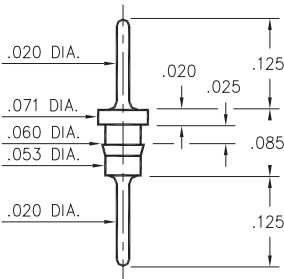
Press-fit in .056 mounting hole



### 6585

6585-0-00-XX-00-00-03-0

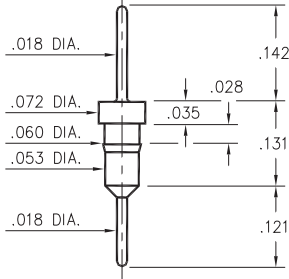
Press-fit in .057 mounting hole  
Pin material is Phosphor Bronze 544 (B2)



### 3404

3404-0-00-XX-00-00-03-0

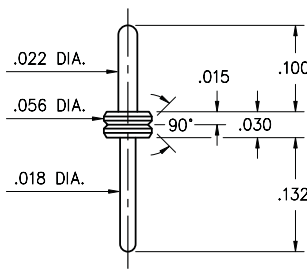
Press-fit in .057 mounting hole



### 3169

3169-0-00-15-00-00-03-0

V-Groove Header Pin  
Also available on Kapton Tape



#### SPECIFICATIONS:

**Pin Material:** Brass Alloy 360, 1/2 Hard  
(Except where noted)

**Dimensions:** Inches

**Tolerances On:** Lengths: ±.005  
Diameters: ±.002  
Angles: ±2°



ORDER CODE: XXXX - X - 00 - XX - 00 - 00 - 03 - 0

BASIC PART #

SPECIFY PIN FINISH:

- 01 200 μ" TIN/LEAD OVER NICKEL
- ◆ 80 200 μ" TIN OVER NICKEL (RoHS)
- ◆ 15 10 μ" GOLD OVER NICKEL (RoHS)
- ◆ 21 20 μ" GOLD OVER NICKEL (RoHS)
- ◆ 34 50 μ" GOLD OVER NICKEL (RoHS)

