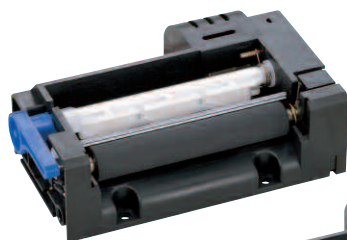


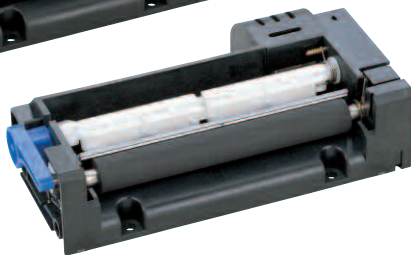
LTP2000 series 24V **Print** Mechanisms

LTP2000 Series

The versatile LTP2000 direct thermal print mechanism series delivers exceptional value with proven 2", 3" and 4" models. The ability to print both receipts and labels, coupled with straight and curved paper path alternatives, and an auto-cutter rated for up to 300,000 cuts, enables these units to tackle the broadest array of applications, including medical devices, kiosks, point of sale systems, and more.



LTP2242



LTP2342

(Not shown: LTP2442)

- **90 mm/sec print speed**
- **Choice of interface board or processor, adding design flexibility**
- **Label and receipt printing support**



Product Specifications

Model		LTP2242	LTP2342	LTP2442
Printing	Method	Thermal line dot printing		
	No. dots/line	432	576	832
	Resolution (dots/mm)	8	8	8
	Paper width (mm)	60	80	112
	Printing width (mm)	54	72	104
	Speed (max mm/sec)	90	75	75
Paper path		Straight/Curved		
Sensors	Head-up detection	By thermistor		
	Platen position detection	By mechanical switch		
	Out of paper detection	By photo interrupter		
Power supply (V)	Operating voltage (Vp)	21.6 to 26.4		
	Operating voltage (Vdd)	4.75 to 5.25		
Peak current (A)	Head	4.3(26.4V/288 dots)		
	Motor	0.5		
Service life	Pulse activation	100 million		
	Abrasion resistance (km)	50		
Operating temperature (°C)		0 to 50		
Dimensions (WxDxH mm)		85.2x61.4x27.0"	106.4x61.4x27.0"	138.2x61.4x27.0"
Mass		Approx. 115	Approx. 135	Approx. 160

LTP2000 series
24V **Print** Mechanisms

Interface Board

Model		IF2301-01B	IF2301-01BK
CPU		PT230P01	
Operating voltage (V)		Vp:21.6 to 26.4, Vcc:4.5 to 5.5	
Character matrix (HxW dots)		16 dot characters: 16x8, 16x16 24 dot characters: 24x12, 24x24	
Character type	Optional font	Yes	Yes
	Downloaded character	Yes	Yes
	User-defined character	Yes	Yes
	Extended graphics character set	Yes	Yes
	Katakana character set	No	Yes
	JIS 1&2 level Kanji	No	Yes
Interface		Parallel, Serial (C-MOS)	
Dimensions (WxDxH mm)		90.0x100.0x22.0	

CPU

Model	PT230P01
Package form	128 pin QFP
Operating voltage (V)	Vp:21.6 to 26.4, Vcc:4.5 to 5.5
Operating frequency (MHz)	18.43 +/-0.5%
Configuration	C-MOS LSI
Interface	Parallel, Serial
Character type	Extended graphics character set, Other characters available with CG's or external RAM
Character matrix (HxW dots)	16 dot characters: 16x8, 16x16 24 dot characters: 24x12, 24x24
Dimensions (WxDxH mm)	22.0x16.0x3.1

Auto-Cutter

Model		ACU2224	ACU2324	ACU2424
Cutting	Method	Slide type		
	Paper width (mm)	60 ^{±0.1}	80 ^{±0.1}	112 ^{±0.1}
	Paper thickness (μm)	65 to 125*		
	Cutting type	Full cut/Partial cut (Leaving center point)		
	Operating time (max sec/cycle)	0.5		
	Cutting pitch (min. mm)	10		
	Cutting frequency (max cuts/min)	30		
	Operating Voltage (V)	Motor	21.6 to 26.4	
Starting Current (A)	Detector (control switch)	4.75 to 5.25		
		1.2		
Life (cut)		300,000		
Dimensions (WxDxH mm)		79.0x66.5x16.5	100.0x66.5x17.0	126.0x69.3x17.5
	Mass (g)	Approx. 120	Approx. 200	Approx. 260

*Use recommended thermal paper
**Excluding protrusion

Mouser Electronics

Authorized Distributor

Click to View Pricing, Inventory, Delivery & Lifecycle Information:

Seiko Instruments:

[LTP2242D-C432A-E](#) [LTP2442D-C832A-E](#) [PT230P01-E](#) [LTP2242C-S432A-E](#) [LTP2342C-S576A-E](#) [LTP2342D-C576A-E](#)