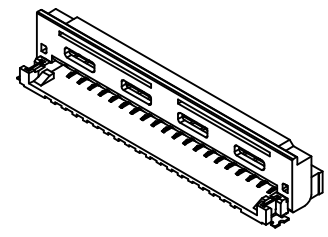
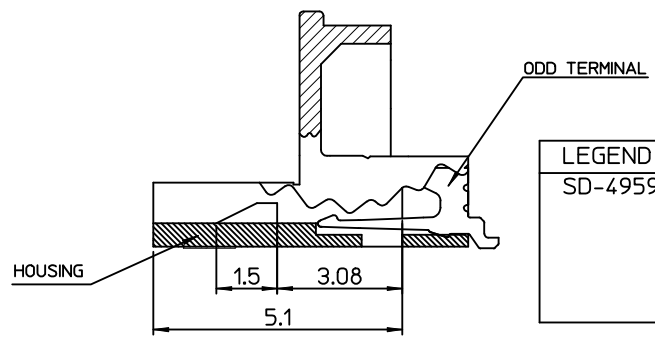
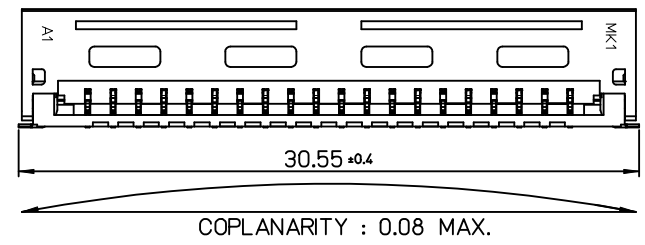
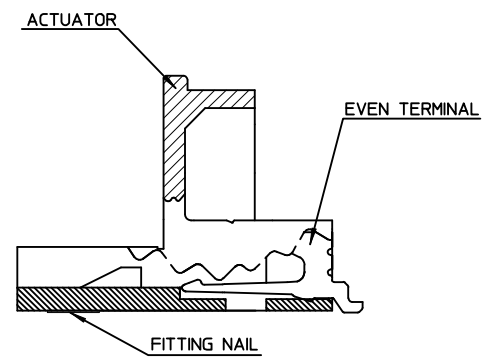
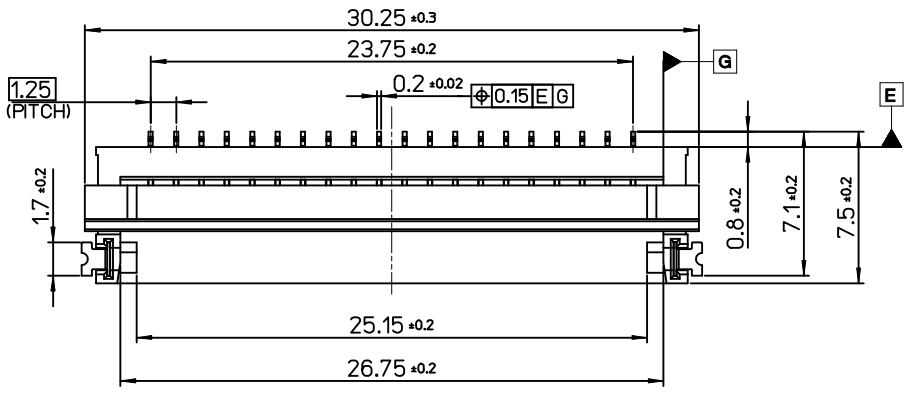


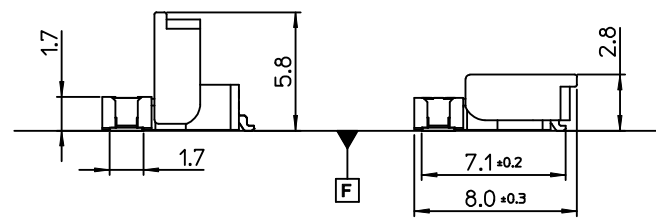
LEAD-FREE



ISOMETRIC VIEW



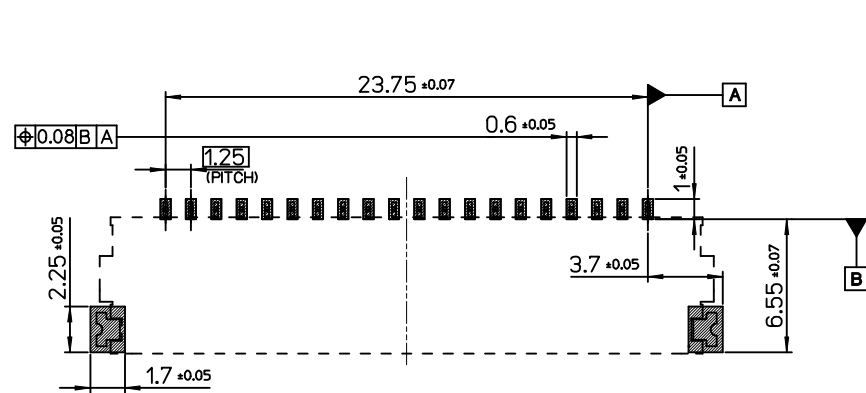
| LEGEND        |                       |
|---------------|-----------------------|
| SD-49597-20*7 | COLOR                 |
| 0             | NATURAL               |
| 1             | BLACK                 |
| 3             | NATURAL, HALOGEN FREE |
| 4             | BLACK, HALOGEN FREE   |



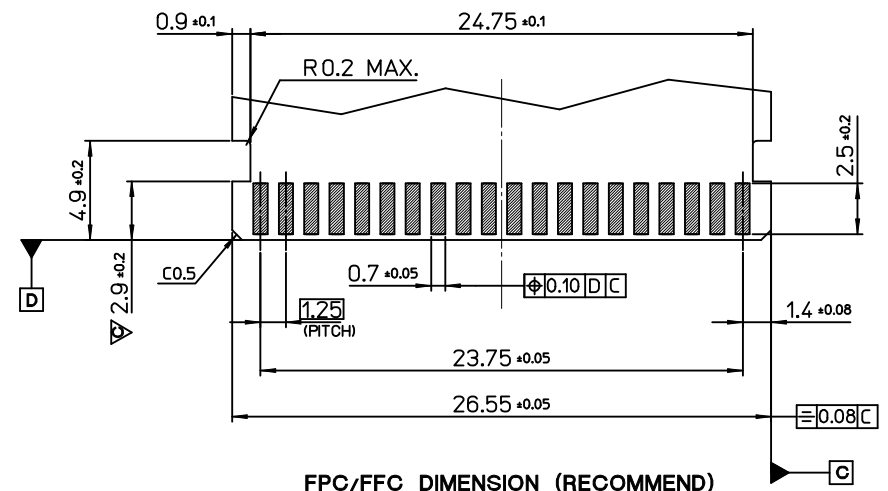
- NOTES
- MATERIAL
    - HOUSING : PA46 ,GLASS FILLED. UL94V-0, COLOR: BEIGE.  
LCP, GLASS FILLED. UL94V-0, COLOR: NATURAL
    - ACTUATOR : LCP, GLASS FILLED. UL94V-0, COLOR: NATURAL, BLACK.
    - TERMINAL : COPPER ALLOY.
    - FITTING NAIL : COPPER ALLOY.
  - FINISHES
    - TERMINAL : Tin[Sn] OVER NICKEL[Ni] PLATING.
    - FITTING NAIL : TIN[Sn] OVER NICKEL[Ni] PLATING.
  - PRODUCT SPECIFICATION : PS-49597-001
  - PACKING SPECIFICATION : PK-49597-001
  - ACTUATOR IS OPEN IN THE EMBOSSED PACKING

|  |                    |   |   |   |                  |              |   |
|--|--------------------|---|---|---|------------------|--------------|---|
| REVISED<br>EC NO: KOR2010-0012<br>DRWN: JHJJEONG 2009/07/24<br>CHKD: YS00KIM 2009/07/24<br>APPR: YUNSIKIM 2009/07/24 | DESCRIPTION<br>REV | QUALITY SYMBOLS   | GENERAL TOLERANCES (UNLESS SPECIFIED)   | DIMENSION STYLE   | SCALE            | DESIGN UNITS | THIRD ANGLE PROJECTION  |
|  |                    | $\nabla=0$<br>$\nabla=0$  | mm    INCH<br>4 PLACES ± --- ± ---<br>3 PLACES ± --- ± ---<br>2 PLACES ± 0.2 ± ---<br>1 PLACE ± 0.25 ± ---<br>ANGULAR ± 1 ° | MM ONLY   | 4:1              | METRIC       | DRAWN BY: JHLEE    DATE: 2007/03/09<br>CHECKED BY:    DATE:<br>APPROVED BY: YS00KIM    DATE: 2007/03/09<br>MATERIAL NO.    DOCUMENT NO. |
|  |                    | DRAFT WHERE APPLICABLE<br>MUST REMAIN<br>WITHIN DIMENSIONS  | SEE TABLE<br>SIZE A3  | TITLE: 1.25 FPC/FFC B/F CONN HOUSING ASS'Y 20P (BOTTOM CONTACT)<br>MOLEX INCORPORATED<br>SD-49597-001 | SHEET NO. 1 OF 3 |              |   |
|  |                    | THIS DRAWING CONTAINS INFORMATION THAT IS PROPRIETARY TO MOLEX INCORPORATED AND SHOULD NOT BE USED WITHOUT WRITTEN PERMISSION |   |   |                  |              |   |

**LEAD-FREE**

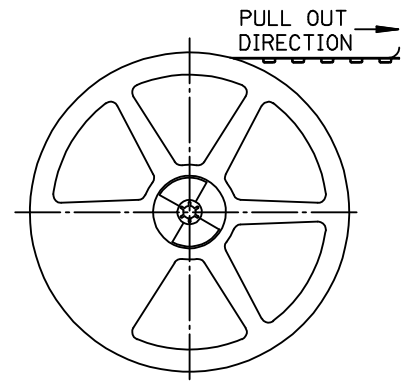
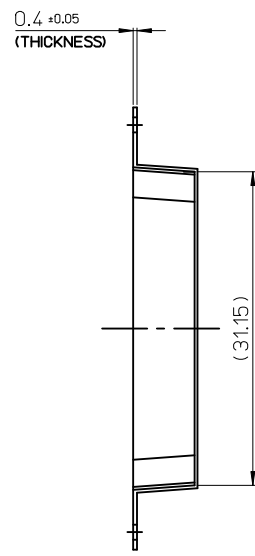
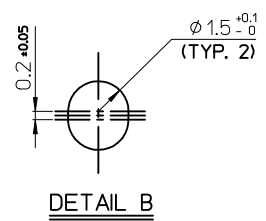
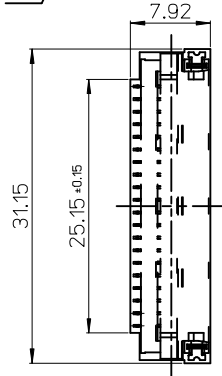
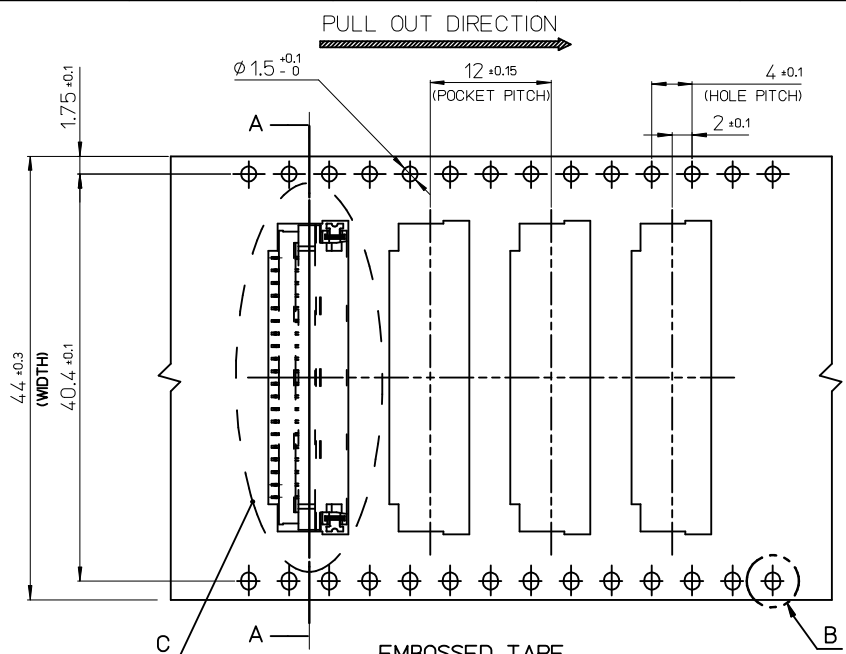


P.C. BOARD DIMENSION (RECOMMEND)

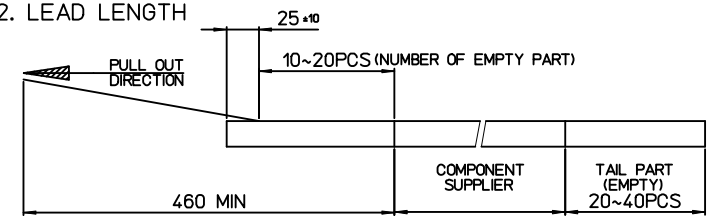


FPC/FFC DIMENSION (RECOMMEND)  
(FLIM THICKNESS = 0.3±0.05)

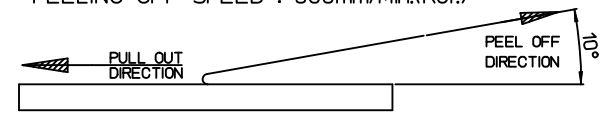
|   |   |                               |                                       |                              |   |                        |                    |   |                        |  |  |
|---|---|-------------------------------|---------------------------------------|------------------------------|---|------------------------|--------------------|---|------------------------|--|--|
| REVISED<br>EC NO: KOR2010-0012<br>DRWN: JHJ<br>CHKD: YS<br>APPR: YS | DESCRIPTION<br>2009/07/24<br>2009/07/24<br>2009/07/24 | QUALITY SYMBOLS<br>▽=0<br>▽=0 | GENERAL TOLERANCES (UNLESS SPECIFIED) |                              | DIMENSION STYLE<br><b>MM ONLY</b>   |                        | SCALE<br>4:1       | DESIGN UNITS<br>METRIC  | THIRD ANGLE PROJECTION |  |  |
|   |   |                               |                                       | mm                           | INCH  | DRAWN BY<br>JHLEE      | DATE<br>2007/03/09 | TITLE<br><b>1.25 FPC/FFC B/F HOUSING ASS'Y 20P (BOTTOM CONTACT)</b> |                        |  |  |
|   |   |                               | 4 PLACES                              | ± ---                        | ± ---   | CHECKED BY<br>KSKIM    | DATE<br>2007/03/09 |   |                        |  |  |
|   |   |                               | 3 PLACES                              | ± ---                        | ± ---   | APPROVED BY<br>YSOOKIM | DATE<br>2007/03/09 | MOLEX INCORPORATED  |                        |  |  |
| 2 PLACES  | ± 0.2   | ± ---                         | MATERIAL NO.<br>SEE TABLE             | DOCUMENT NO.<br>SD-49597-001 | SHEET NO.<br>2 OF 3   |                        |                    |   |                        |  |  |
| DRAFT WHERE APPLICABLE MUST REMAIN WITHIN DIMENSIONS                |   |                               | ANGULAR ± 1 °                         |                              | THIS DRAWING CONTAINS INFORMATION THAT IS PROPRIETARY TO MOLEX INCORPORATED AND SHOULD NOT BE USED WITHOUT WRITTEN PERMISSION |                        |                    |   |                        |  |  |



- NOTES
1. QUANTITY OF CONNECTORS : 1200PCS/REEL
  2. LEAD LENGTH



3. PEELING OFF FORCE OF COVER TAPE : 0.1N~0.59N(10.2GF~60GF)  
(PEELING DIRECTION AS SHOW IN FOLLOW FIG.)  
PEELING OFF SPEED : 300mm/Min.(Ref.)



4. FLASH IN ANY PORTION SHOULD BE LESS THAN 0.20mm MAX.

|              |                        |           |             |            |         |
|--------------|------------------------|-----------|-------------|------------|---------|
| HALOGEN FREE | 495972047              | 495972040 | 49597-9920  | 44mm       | BLACK   |
|              | 495972037              | 495972030 |             |            | NATURAL |
| NON-HF       | 495972017              | 495972010 |             |            | BLACK   |
|              | 495972007              | 495972000 |             |            | NATURAL |
| TYPE         | MATERIAL NO.           | CONNECTOR | EMBOSS TAPE | TAPE WIDTH | COLOR   |
| 3            | PLASTIC BOBBIN         |           | HI P.S      | WHITE      |         |
| 2            | COVER TAPE             |           | P.E.T       | 37.5mm     |         |
| 1            | CARRIER (EMBOSSD) TAPE |           | P.E.T       |            |         |
| NO.          | DESCRIPTION            |           | MATERIAL    | REMARK     |         |

REVISED

EC NO: KOR2010-0012

DRWN: HJEONG 2009/07/24

CHKD: YSOOKIM 2009/07/24

APPR: YUNSIKKIM 2009/07/24

|                 |                   |  |                 |           |              |              |  |
|-----------------|-------------------|--|-----------------|-----------|--------------|--------------|--|
| QUALITY SYMBOLS | $\nabla=0$        | GENERAL TOLERANCES (UNLESS SPECIFIED)                | DIMENSION STYLE |           | SCALE        | DESIGN UNITS | THIRD ANGLE PROJECTION                                   |
|                 | $\sphericalcap=0$ |  | MM ONLY         | 1:1       | METRIC       |              |  |
|                 |                   |  | mm              | INCH      | DRAWN BY     | DATE         | TITLE  |
|                 |                   | 4 PLACES   | $\pm$ ---       | $\pm$ --- | JHLEE        | 2007/03/09   | 1.25 FPC/FFC B/F CONN HOUSING ASS'Y 20P (BOTTOM CONTACT) |
|                 |                   | 3 PLACES   | $\pm$ ---       | $\pm$ --- | CHECKED BY   | DATE         |  |
|                 |                   | 2 PLACES   | $\pm 0.2$       | $\pm$ --- | KSKIM        | 2007/03/09   | MOLEX INCORPORATED                                       |
|                 |                   | 1 PLACE  | $\pm 0.25$      | $\pm$ --- | APPROVED BY  | DATE         |  |
|                 |                   | ANGULAR $\pm 1^\circ$                                |                 |           | YSOOKIM      | 2007/03/09   |  |
|                 |                   | DRAFT WHERE APPLICABLE MUST REMAIN WITHIN DIMENSIONS |                 |           | MATERIAL NO. | DOCUMENT NO. | SHEET NO.  |
|                 |                   |  |                 | SEE TABLE | SD-49597-001 |              | 3 OF 3   |

|      |   |  |  |  |  |  |  |
|------|---|--|--|--|--|--|--|
| SIZE | THIS DRAWING CONTAINS INFORMATION THAT IS PROPRIETARY TO MOLEX INCORPORATED AND SHOULD NOT BE USED WITHOUT WRITTEN PERMISSION |  |  |  |  |  |  |
| A3   |   |  |  |  |  |  |  |