

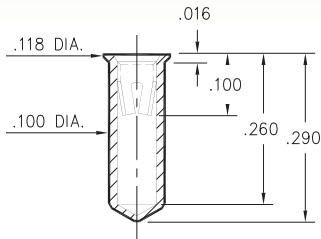
PIN RECEPTACLES

FOR .040" - .050" DIAMETER PINS

0355

0355-0-15-XX-02-XX-10-0

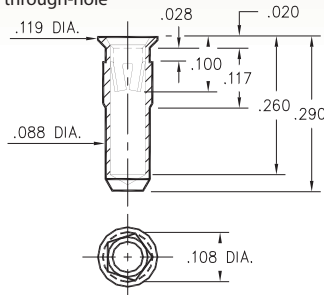
Solder mount in .102 min. mounting hole



0354

0354-0-15-XX-02-XX-10-0

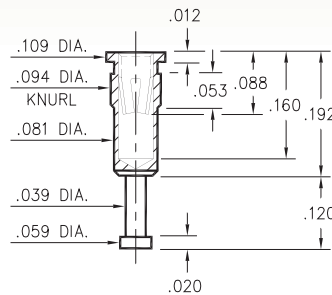
Pentagonal press-fit in .104 min. plated through-hole



3490

3490-0-15-XX-02-XX-10-0

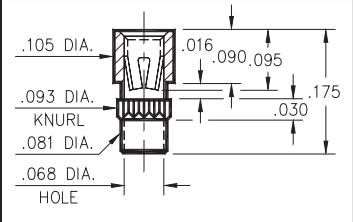
Press-fit in .091 mounting hole



3808

3808-0-15-XX-02-XX-10-0

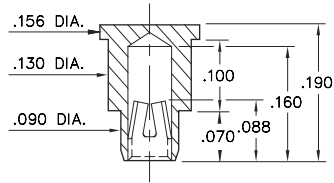
Press-fit in .090 mounting hole



9184

9184-0-15-XX-02-XX-40-0

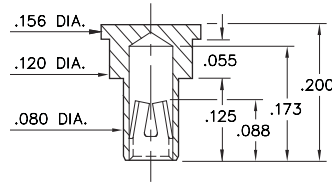
Bottom entry, surface mount
.092 min. plated through-hole
Also available on carrier tape,
Order as: 9184-0-57-XX-02-XX-40-0



9222

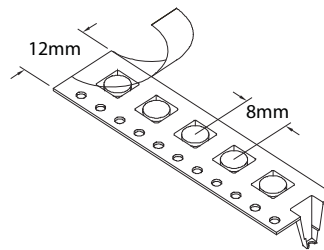
9222-2-15-XX-02-XX-40-0

Bottom entry, surface mount
.082 min. plated through-hole
Also available on carrier tape,
Order as: 9222-2-57-XX-02-XX-40-0



Carrier tape format for
9184 and 9222.

1,500 pieces per 13" reel



SPECIFICATIONS:

Shell Material: Brass Alloy 360, 1/2 Hard

Contact Material: Beryllium Copper Alloy 172, HT

Dimensions: Inches

Tolerances On: Lengths: ±.005

Diameters: ±.002

Angles: ± 2°



ORDER CODE: XXXX - X - 15 - XX - 02 - XX - XX - 0

BASIC PART #

SPECIFY SHELL FINISH:

- 01 200 μ" TIN/LEAD OVER NICKEL
- ◆ 80 200 μ" TIN OVER NICKEL (RoHS)
- ◆ 15 10 μ" GOLD OVER NICKEL (RoHS)

SPECIFY CONTACT FINISH:

- 01 200 μ" TIN/LEAD OVER NICKEL
- ◆ 80 200 μ" TIN OVER NICKEL (RoHS)
- ◆ 27 30 μ" GOLD OVER NICKEL (RoHS)

SELECT CONTACT:

#02 CONTACT (DATA ON PAGE 259)

(For alternate contact choices, see group F on page 248)

