

## TINA-TAPE lenses for Golden/ Platinum & Dragon+ LEDs



- Designed & optimized for Osram-os Golden Dragon+ series of LEDs
- Lens material optical grade PC with high UV and temperature resistance (120°C/248°F). Allows use of high current and temperature conditions
- Best available optical efficiency, over 90%, with an extremely good cutoff of light
- Fastening to heat sink with a PU foam adhesive tape of automotive grade (included)
- We advise customer to ensure the suitability and sufficiency of the bond in the end product. For example, mechanical stress, vibration and holes on the surface of the circuit board weaken the strength of the tape.
- Please check fastening details from this link: ([http://www.ledil.com/datasheets/DataSheet\\_TAPE.pdf](http://www.ledil.com/datasheets/DataSheet_TAPE.pdf))
- Compact dimensions 16.1 x 10.1 mm.

### LENS TYPES

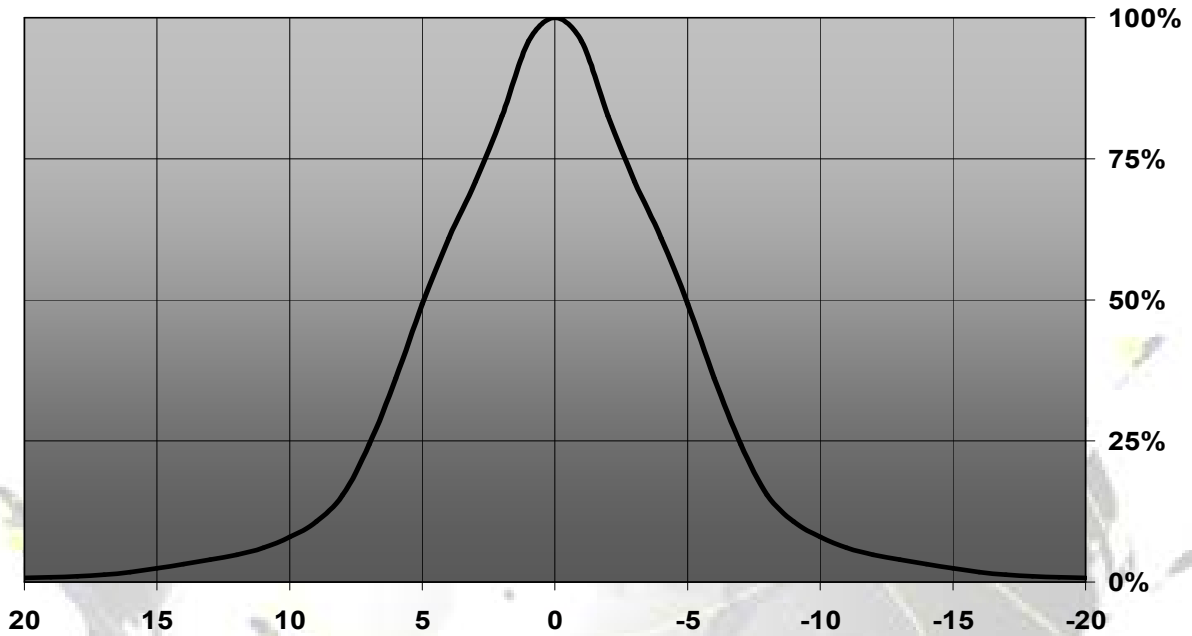
NAME	ORDERING CODE	FWHM Angle
Tina-0-Plus Real Spot	FA10886_Tina-0-Plus-RS	±5°
Tina-0-Plus Diffuser	FA10642_Tina-0-Plus-D	±6°
Tina-0-Plus Medium	FA10643_Tina-0-Plus-M	±14°
Tina-0-Plus Oval	FA11199_Tina-0-Plus-O	Coming soon

© Ledil Oy – PRELIMINARY - Subject to change without prior notice

## MEASUREMENTS

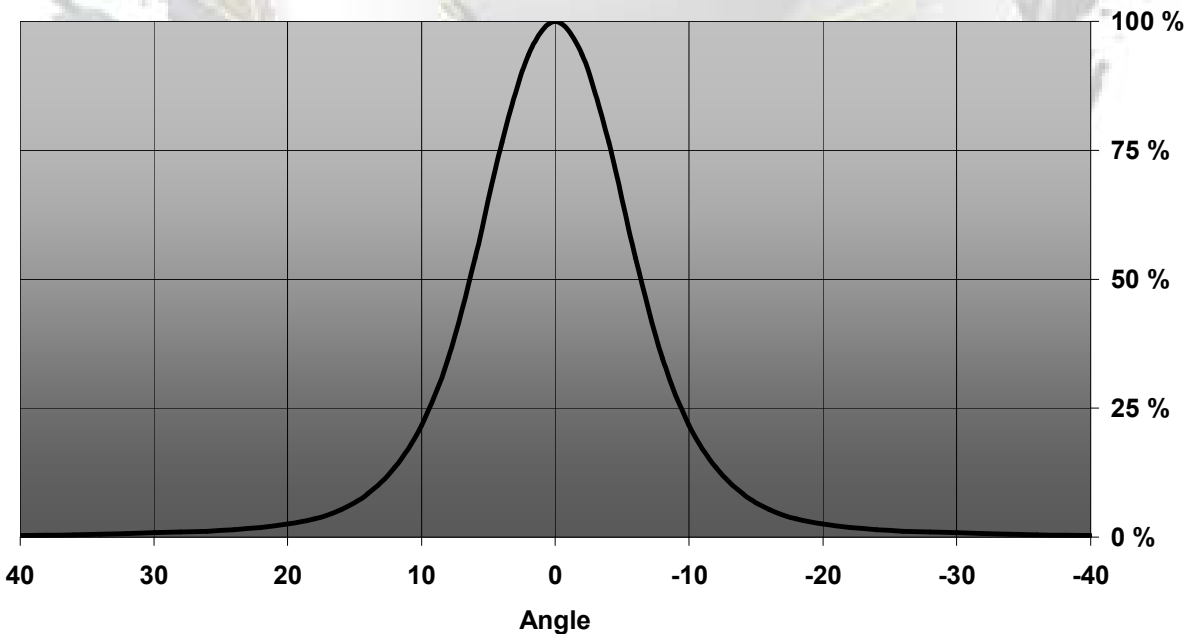
### TINA-0-Plus-RS

Relative Intensity of FA10886\_Tina-0-Plus-RS



### TINA-0-Plus-D

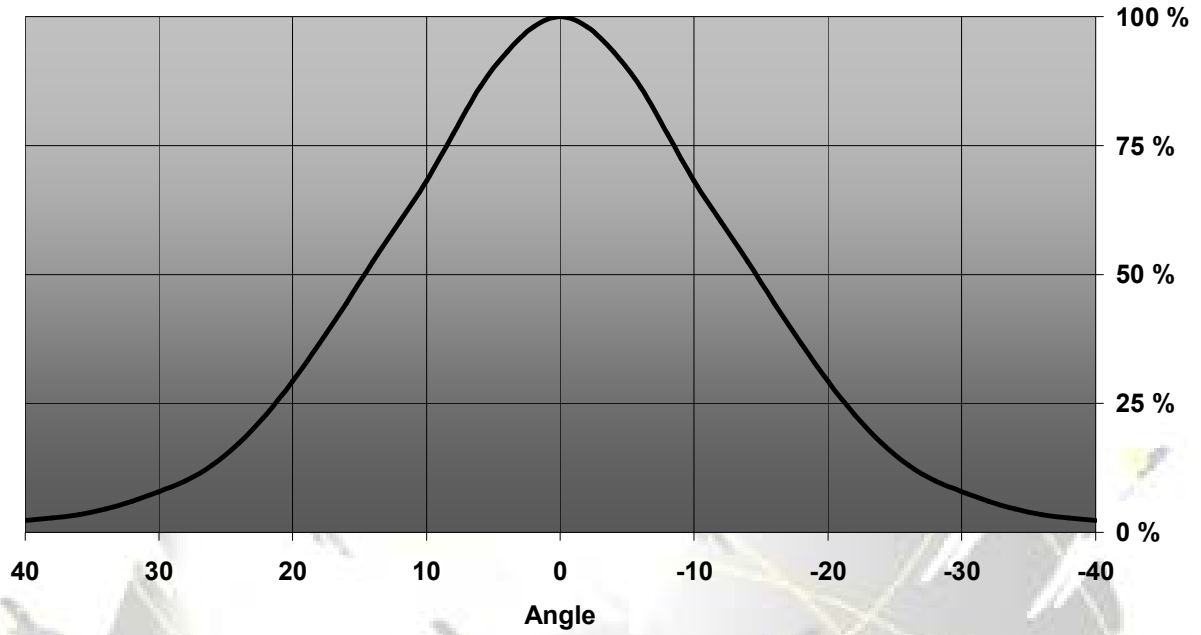
Relative Intensity of Tina-0+-D



© Ledil Oy – PRELIMINARY - Subject to change without prior notice

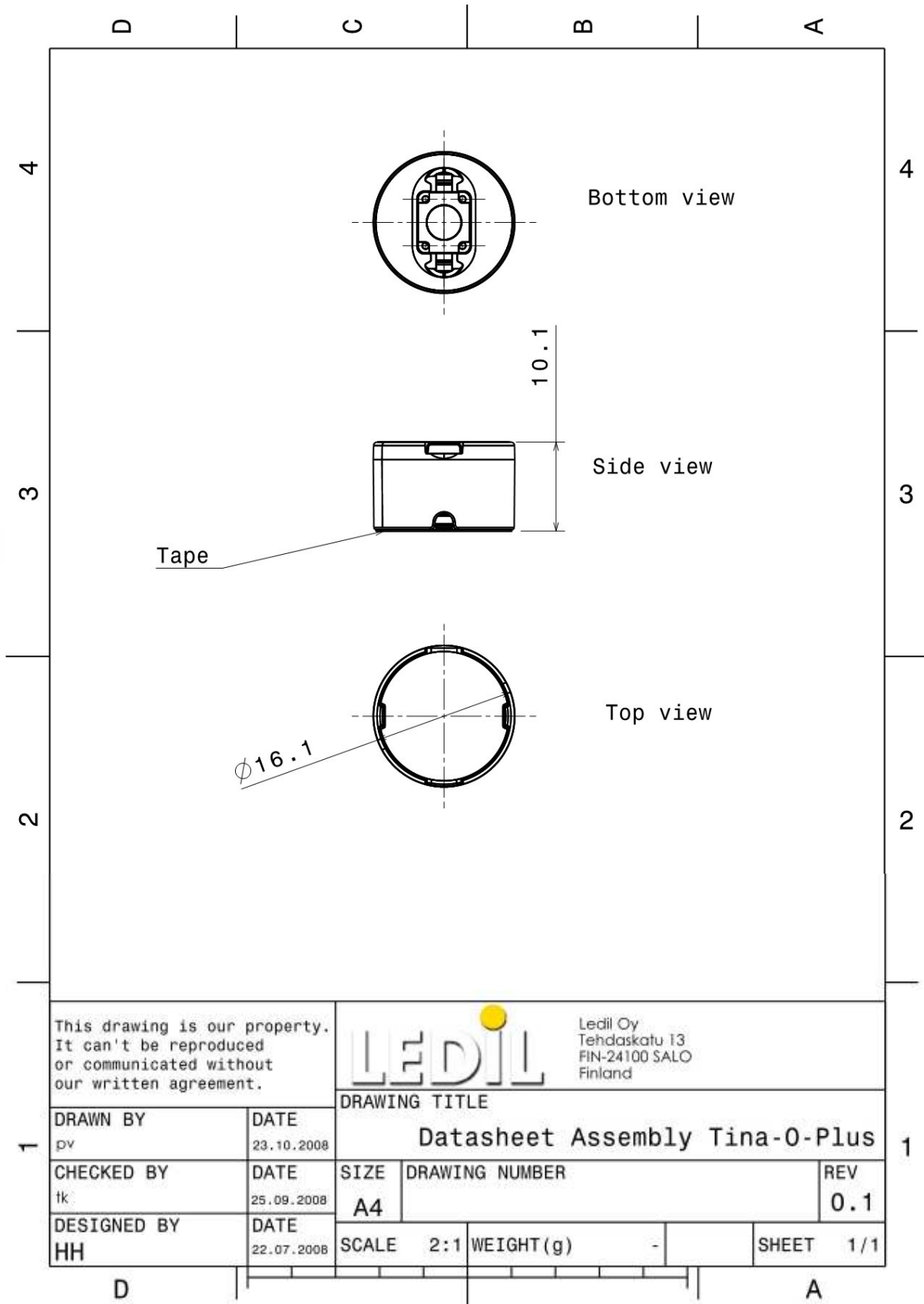
## TINA-0-Plus-M

Relative Intensity of Tina-0+-M



© Ledil Oy – PRELIMINARY - Subject to change without prior notice

## DRAWINGS



© Ledil Oy - PRELIMINARY - Subject to change without prior notice