

MICRO SWITCH

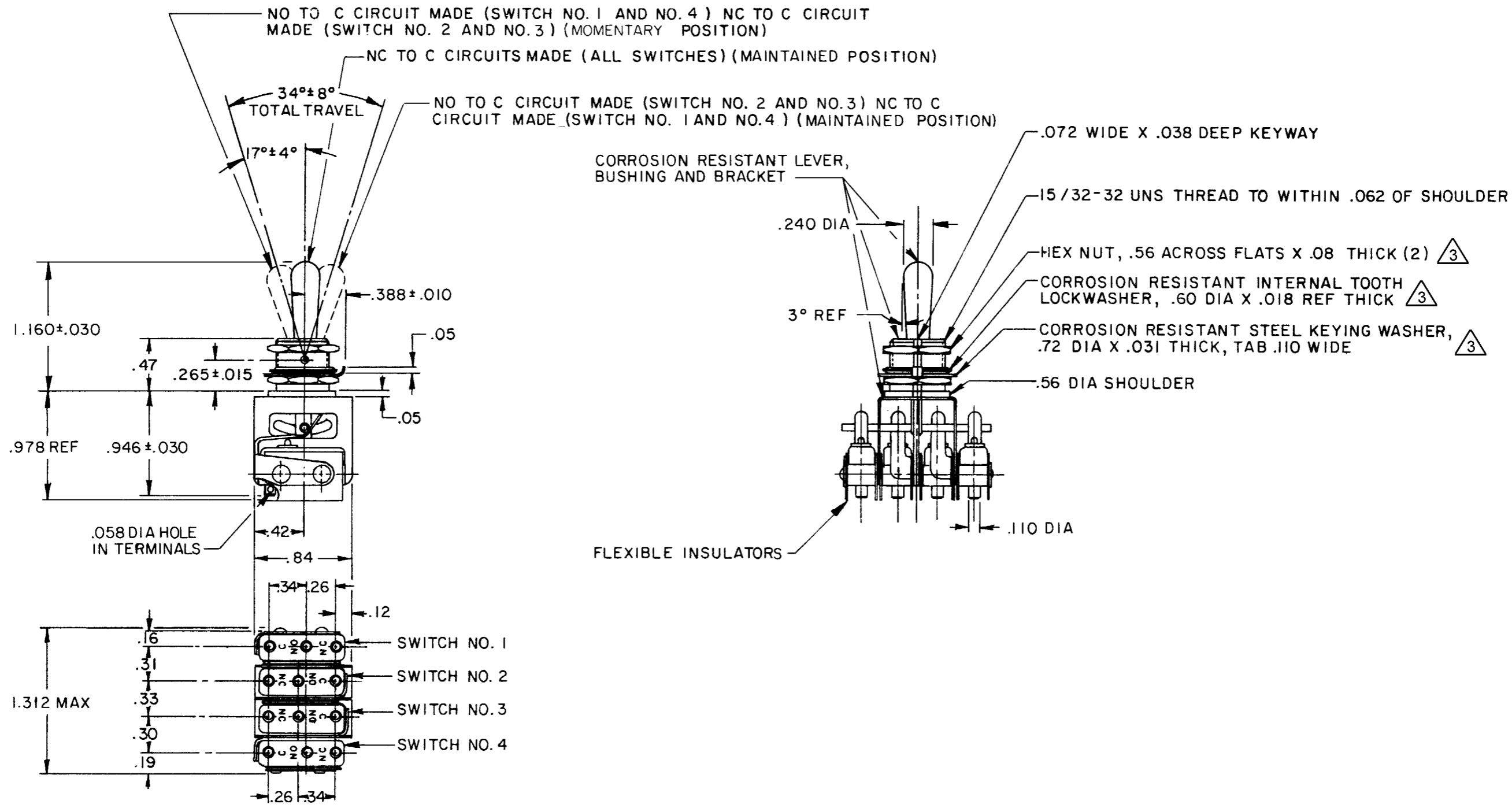
FREEPORT, ILLINOIS, U.S.A.
A DIVISION OF HONEYWELL

FED. MFG. CODE 91929

**ASSEMBLY-
TOGGLE SWITCH**

CATALOG LISTING

13AT10



CATALOG LISTING
13AT10
PAGE 1 OF 1

RELEASE NO. PR-1900

DRAWING NUMBER
M

ISSUE
10

REVISIONS

A	00-52725	KAG	JUN 83
B	CO 66089	D A W	13 FEB 91
C	206093	C S L	29 JUL 02

CHECK 7 JAN 83

FO-5285 1-B
DRAWN
KAG 1 JUN 83

THIS DRAWING COVERS A PROPRIETARY ITEM AND IS THE PROPERTY OF MICRO SWITCH, A DIVISION OF HONEYWELL. THIS DRAWING IS NOT TO BE COPIED OR USED WITHOUT THE APPROVAL OF MICRO SWITCH.

CHARACTERISTICS

ELECTRICAL DATA
CONTACT ARRANGEMENT
S P D T (4)
250 VAC ----- 5 AMP
30 VOLTS DC RATING
INDUCTIVE ----- SEA LEVEL --- 3 AMP
50,000 FT --- 2.5 AMP
RESISTIVE ----- SEA LEVEL --- 5 AMP
50,000 FT --- 5 AMP
MAXIMUM INRUSH ----- 24 AMP

SCALE FULL
DO NOT SCALE PRINT
TOLERANCES
APPLY TO DESIGN UNITS. CONVERSIONS ARE ONLY FOR REFERENCE. UNLESS NOTED, TOLERANCES ARE ±
DIM. TOL. DIM. TOL.
mm mm/in in mm/in
NO PLACES X 1/04
ONE PLACE X,X 0.4/.016 X X 0.8/.03
TWO PLACES X,XX 0.15/.006 X,XX 0.38/.015
THREE PLACES X,XXX 0.13/.005
ANGLES
DESIGN UNITS <input type="checkbox"/> SI METRIC <input checked="" type="checkbox"/> US CUSTOMARY
THIRD ANGLE PROJECTION
WEIGHT

- NOTES
- 1 - UNIT INCLUDES CATALOG LISTING 1SM1 TYPE BASIC SWITCH (4)
 - 2 - TERMINALS ARE PLATED FOR SOLDERING
 - ③ HARDWARE FURNISHED ASSEMBLED WITH SWITCH OR IN PACKET PER MIL-PRF-8805
 - 4 - REPLACEMENT MOUNTING PACKET 15PA312-AT