

# AZ7671

## 10 AMP SUBMINIATURE POWER RELAY

### FEATURES

- Small footprint
- Low cost
- Epoxy sealed version available
- 10 Amp switching
- UL, CUR E44211
- TuV pending

### CONTACTS

<b>Arrangement</b>	SPST (1 Form A) SPDT (1 Form C)
<b>Ratings</b>	Resistive load: Max. switched power: 150 W 1250 VA  Max. switched current: 10 A  Max. switched voltage: 30 VDC or 277 VAC  *Note: If switching voltage is greater than 30VDC, special precautions must be taken. Please contact the factory.
<b>Rated Load UL, CUR</b>	5A at 250 VAC 10A at 125 VAC 4.2 A at 277 VAC  1/4 HP at 120/240/277 VAC  TV - 5 at 120 VAC Pilot Duty at 24 VA, 24 VAC 125 VA at 120/240/277 VAC C150 at 120 VAC
<b>TUV</b>	5A at 250 VAC 5A at 28 VDC
<b>Material</b>	silver nickel
<b>Resistance</b>	<100 milliohms initially (24 V, 1 A voltage drop method)



### GENERAL DATA

<b>Life Expectancy Mechanical Electrical</b>	Minimum operations 1 x 10 <sup>7</sup> 1 x 10 <sup>5</sup> at 5 A 240 VAC Res.
<b>Operate Time (typical)</b>	8 ms at nominal coil voltage
<b>Release Time (typical)</b>	5 ms at nominal coil voltage (with no coil suppression)
<b>Dielectric Strength (at sea level for 1 min.)</b>	4000 Vrms coil to contact 1000 Vrms between open contacts
<b>Insulation Resistance</b>	1000 megohms min. at 20°C 500 VDC 50% RH
<b>Dropout</b>	Greater than 5% of nominal coil voltage
<b>Ambient Temperature Operating  Storage</b>	At nominal coil voltage -40°C (-40°F) to 70°C (158°F), standard  -40°C (-40°F) to 130°C (266°F)
<b>Vibration</b>	0.062" DA at 10–50 Hz
<b>Shock</b>	100g for 11ms 1/2 sine pulse
<b>Enclosure</b>	P.B.T. polyester
<b>Terminals</b>	Tinned copper alloy, P.C.
<b>Max. Solder Temp.</b>	270°C (518°F)
<b>Max. Solder Time</b>	5 seconds
<b>Max. Solvent Temp.</b>	80°C (176°F)
<b>Max. Immersion Time</b>	30 seconds
<b>Weight</b>	6 grams

### COIL

<b>Power At Pickup Voltage (typical) Max. Continuous Dissipation Temperature Rise</b>	253 mW standard 113 mW sensitive  1.25 W at 20°C (68°F) ambient  41°C (74°F) at nominal coil voltage, standard 22°C (40°F) at nominal coil voltage, sensitive
<b>Temperature</b>	Max. 105°C (221°F)

### NOTES

1. All values at 20°C (68°F).
2. Relay may pull in with less than "Must Operate" value.
3. Specifications subject to change without notice.



**AMERICAN ZETTLER, INC.** [www.azettler.com](http://www.azettler.com)

75 COLUMBIA • ALISO VIEJO, CA 92656 • PHONE: (949) 831-5000 • FAX: (949) 831-8642 • E-MAIL: SALES@AZETTLER.COM

10/2/08 W

# AZ7671

## RELAY ORDERING DATA

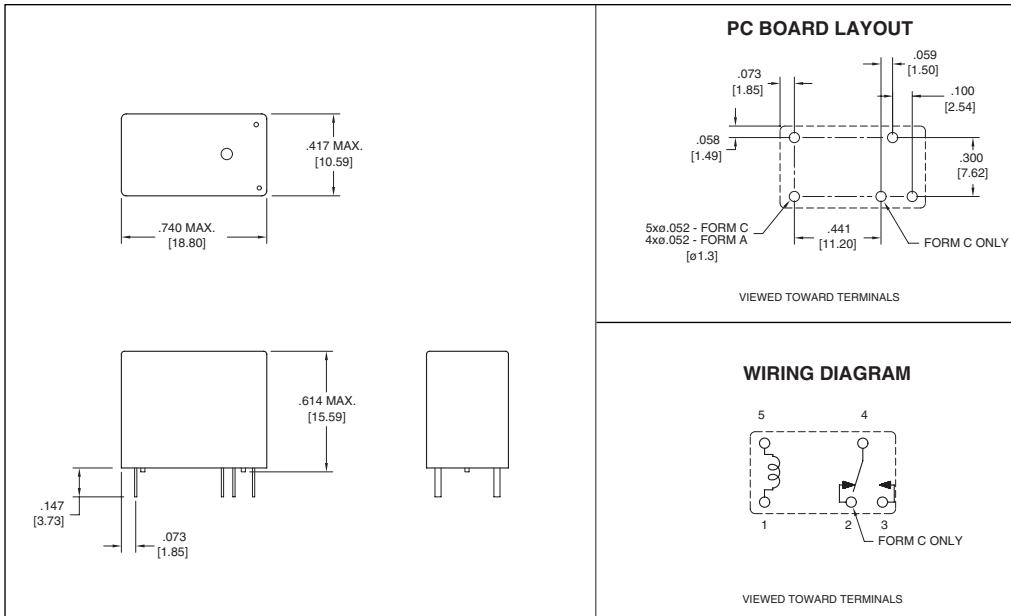
STANDARD RELAYS				ORDER NUMBER*	
COIL SPECIFICATIONS				ORDER NUMBER*	
Nominal Coil VDC	Must Operate VDC	Max. Continuous VDC	Coil Resistance $\pm 10\%$	Form A (SPST)	Form C (SPDT)
3	2.25	3.9	20	AZ7671-1A-3D	AZ7671-1C-3D
5	3.75	6.5	55	AZ7671-1A-5D	AZ7671-1C-5D
6	4.5	7.8	80	AZ7671-1A-6D	AZ7671-1C-6D
9	6.75	11.7	180	AZ7671-1A-9D	AZ7671-1C-9D
12	9.0	15.6	320	AZ7671-1A-12D	AZ7671-1C-12D
18	13.5	23.4	720	AZ7671-1A-18D	AZ7671-1C-18D
24	18.0	31.2	1,280	AZ7671-1A-24D	AZ7671-1C-24D

\*Add suffix "E" for epoxy sealed version.

SENSITIVE RELAYS				
COIL SPECIFICATIONS				ORDER NUMBER*
Nominal Coil VDC	Must Operate VDC	Max. Continuous VDC	Coil Resistance $\pm 10\%$	Form A (SPST)
3	2.25	3.9	45	AZ7671-1A-3DS
5	3.75	6.5	125	AZ7671-1A-5DS
6	4.5	7.8	180	AZ7671-1A-6DS
9	6.75	11.7	400	AZ7671-1A-9DS
12	9.0	15.6	720	AZ7671-1A-12DS
18	13.5	23.4	1600	AZ7671-1A-18DS
24	18.0	31.2	2800	AZ7671-1A-24DS

\*Add suffix "E" for epoxy sealed version.

## MECHANICAL DATA



Dimensions in inches with metric equivalents in parentheses. Tolerance:  $\pm .010''$



**AMERICAN ZETTLER, INC.**

[www.azettler.com](http://www.azettler.com)

75 COLUMBIA • ALISO VIEJO, CA 92656 • PHONE: (949) 831-5000 • FAX: (949) 831-8642 • E-MAIL: SALES@AZETTLER.COM

10/2/08 W