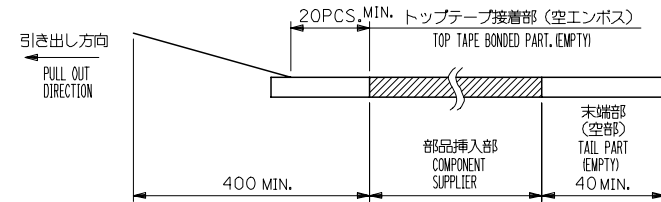
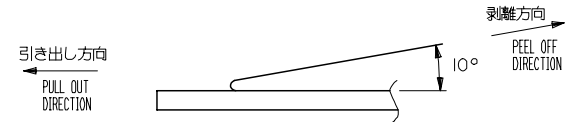


**注記 NOTES**

- 製品詳細寸法については、図面SD-54393-024を参照下さい。  
RE DETAILED DIMENSION, SEE SD-54393-024.
- 梱包数量：2000個/リール  
NUMBER OF CONNECTORS : 2000PCS/REEL
- リードテープ長さ LEAD TAPE LENGTH



- トップテープの剥離強度：0.1N~1.3N {10gf~130gf}  
(剥離方向は下図参照)  
尚、本規格値は出荷時に適用。(但し、輸送時に剥離が発生しないこと。)  
PEELING OFF FORCE OF TOP TAPE : 0.1N ~ 1.3N(10gf ~ 130gf)  
(PEELING DIRECTION AS SHOWN IN FOLLOWING FIG,)  
THIS REQUIREMENT SHOULD BE APPLIED AT SHIPMENT.  
PEEL OFF SHOULD NOT BE ALLOWED, DURING TRANSPORTATION.



- 材料 (MATERIAL)  
キャリアテープ (CARRIER TAPE) : ポリプロピレン (POLYPROPYLENE)  
トップテープ (TOP TAPE) : PET, PE, PEF  
リール (REEL) : ポリスチレン (PS) <リサイクル材を含む>  
POLYSTYREN (PS) <RECYCLE MATERIAL CONTAINED>
- 本製品は54393-\*\*91の鉛フリー品です。  
THIS PRODUCT IS LEAD FREE OF 54393-\*\*91

54393-\*\*81 MODEL NO.

|  |                                       |         |  |                   |  |                              |
|--|---------------------------------------|---------|--|-------------------|--|------------------------------|
| REVISED<br>EC NO: J2006-3255<br>DRW:HYAJIMA 2006/05/22<br>CHKD:TANAKA 2006/05/22<br>APPR:NUKITA 2006/05/26 | GENERAL TOLERANCES (UNLESS SPECIFIED) |         | DIMENSION STYLE<br>MM ONLY                                 | SCALE<br>---      | DESIGN UNITS<br>METRIC   | THIRD ANGLE PROJECTION       |
|  | 10 UNDER                              | ± ---   | DRAWN BY<br>H. SHIMABUKUR                                  | DATE<br>'04/01/29 | TITLE<br>0.3 FPC CONN (EASY ON)<br>HSG ASSY EMBSTP PKG<br>-LEAD FREE-  |                              |
|  | 10 OVER 30 UNDER                      | ± ---   | CHECKED BY<br>K. TOJO                                      | DATE<br>'04/01/29 | MOLEX INCORPORATED   |                              |
|  | 30 OVER                               | ± ---   | APPROVED BY<br>M. SASAO                                    | DATE<br>'04/01/29 | MATERIAL NO.<br>SEE CHART  | DOCUMENT NO.<br>SD-54393-023 |
|  | ANGULAR                               | ± --- ° | DRAFT WHERE APPLICABLE<br>MUST REMAIN<br>WITHIN DIMENSIONS |                   | THIS DRAWING CONTAINS INFORMATION THAT IS PROPRIETARY TO MOLEX<br>INCORPORATED AND SHOULD NOT BE USED WITHOUT WRITTEN PERMISSION |                              |

10 9 8 7 6 5 4 3 2 1

F

E

D

C

B

A

F

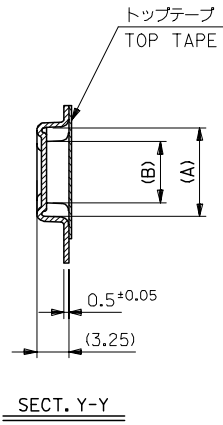
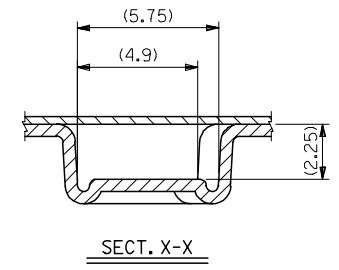
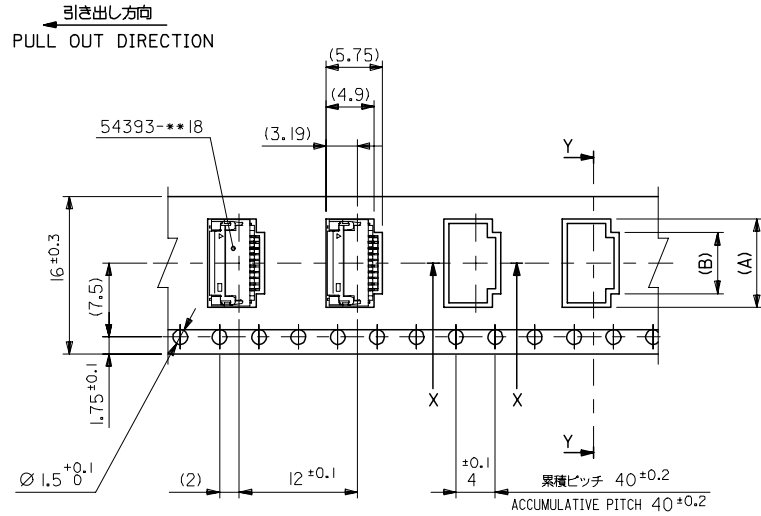
E

D

C

B

A



1.6mm幅キャリアテープ  
1.6mm WIDTH CARRIER TAPE

|                                |      |      |     |     |              |            |
|--------------------------------|------|------|-----|-----|--------------|------------|
| 16                             | 21.4 | 17.4 | 5.0 | 7.8 | 54393-1781   | 17         |
| キャリアテープ幅<br>CARRIER TAPE WIDTH | D    | C    | B   | A   | MATERIAL NO. | 巻数<br>CKT. |

|   |  |  |                   |   |                           |
|---|--|--|-------------------|---|---------------------------|
| REVISED<br>EC NO: J2006-3255<br>DRW:HYAJIMA 2006/05/22<br>CHKD:MTANAKA 2006/05/22<br>APPR:NUKITA 2006/05/26 | GENERAL TOLERANCES<br>(UNLESS SPECIFIED) | DIMENSION STYLE<br>MM ONLY   | SCALE<br>---      | DESIGN UNITS<br>METRIC  | THIRD ANGLE<br>PROJECTION |
|   | 10 UNDER ± ---                           | DRAWN BY<br>H. SHIMABUKUR  | DATE<br>'04/01/29 | TITLE<br>0.3 FPC CONN (EASY ON)<br>HSG ASSY EMBSTP PKG<br>-LEAD FREE- |                           |
|   | 10 OVER 30 UNDER ± ---                   | CHECKED BY<br>K. TOJO  | DATE<br>'04/01/29 | MOLEX INCORPORATED  |                           |
|   | 30 OVER ± ---                            | APPROVED BY<br>M. SASAO  | DATE<br>'04/01/29 | DOCUMENT NO.<br>SD-54393-023  | SHEET NO.<br>2 OF 4       |
|   | ANGULAR ± --- °                          | MATERIAL NO.<br>SEE CHART  |                   |   |                           |
| DRAFT WHERE APPLICABLE<br>MUST REMAIN<br>WITHIN DIMENSIONS  | SIZE<br>A3                               | THIS DRAWING CONTAINS INFORMATION THAT IS PROPRIETARY TO MOLEX<br>INCORPORATED AND SHOULD NOT BE USED WITHOUT WRITTEN PERMISSION |                   |   |                           |

10 9 8 7 6 5 4 3 2 1

F

E

D

C

B

A

F

E

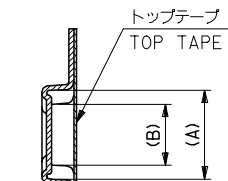
D

C

B

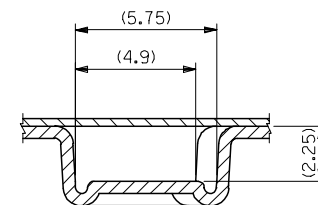
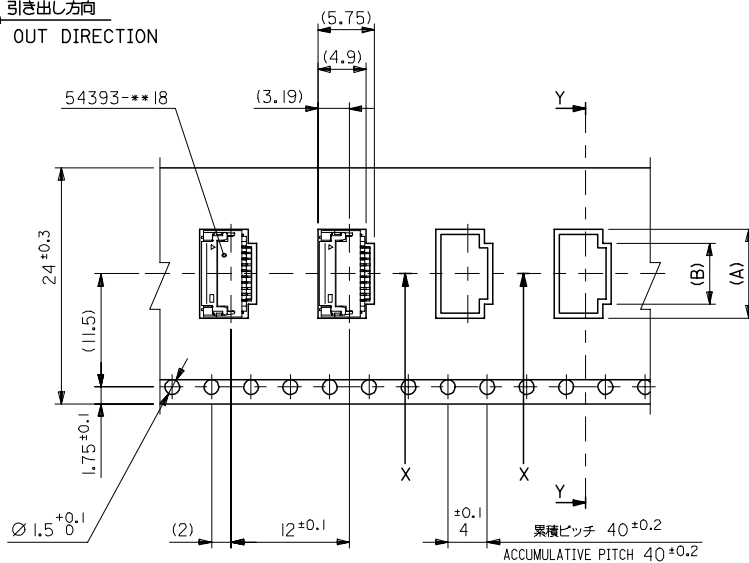
A

引き出し方向  
PULL OUT DIRECTION



SECT. Y-Y

24mm幅キャリアテープ  
24mm WIDTH CARRIER TAPE



SECT. X-X

|                                |      |      |      |      |              |            |
|--------------------------------|------|------|------|------|--------------|------------|
| 24                             | 29.4 | 25.4 | 13.4 | 16.2 | 54393-4581   | 45         |
|                                |      |      | 11.6 | 14.4 | 54393-3981   | 39         |
|                                |      |      | 9.8  | 12.6 | 54393-3381   | 33         |
|                                |      |      | 8.0  | 10.8 | 54393-2781   | 27         |
|                                |      |      | 6.8  | 9.6  | 54393-2381   | 23         |
|                                |      |      | 6.2  | 9.0  | 54393-2181   | 21         |
| キャリアテープ幅<br>CARRIER TAPE WIDTH | D    | C    | B    | A    | MATERIAL NO. | 数量<br>QTY. |

54393-\*\*\*81 MODEL NO.

|  |  |            |  |                   |   |                           |
|--|--|------------|--|-------------------|---|---------------------------|
| REVISED<br>EC NO: J2006-3255<br>DRW:HYAJIMA 2006/05/22<br>CHKD:MANAKA 2006/05/22<br>APPR:NUKITA 2006/05/26 | GENERAL TOLERANCES<br>(UNLESS SPECIFIED) |            | DIMENSION STYLE<br>MM ONLY   | SCALE<br>---      | DESIGN UNITS<br>METRIC  | THIRD ANGLE<br>PROJECTION |
|  | 10 UNDER                                 | ± ---      | DRAWN BY<br>H. SHIMABUKUR  | DATE<br>'04/01/29 | TITLE<br>0.3 FPC CONN (EASY ON)<br>HSG ASSY EMBSTP PKG<br>-LEAD FREE- |                           |
|  | 10 OVER 30 UNDER                         | ± ---      | CHECKED BY<br>K. TOJO  | DATE<br>'04/01/29 | MOLEX INCORPORATED  |                           |
|  | 30 OVER                                  | ± ---      | APPROVED BY<br>M. SASAO  | DATE<br>'04/01/29 | DOCUMENT NO.<br>SD-54393-023  | SHEET NO.<br>3 OF 4       |
|  | ANGULAR                                  | ± --- °    | MATERIAL NO.<br>SEE CHART  |                   |   |                           |
| DRAFT WHERE APPLICABLE<br>MUST REMAIN<br>WITHIN DIMENSIONS   |  | SIZE<br>A3 | THIS DRAWING CONTAINS INFORMATION THAT IS PROPRIETARY TO MOLEX<br>INCORPORATED AND SHOULD NOT BE USED WITHOUT WRITTEN PERMISSION |                   |   |                           |

10 9 8 7 6 5 4 3 2 1

F

E

D

C

B

A

F

E

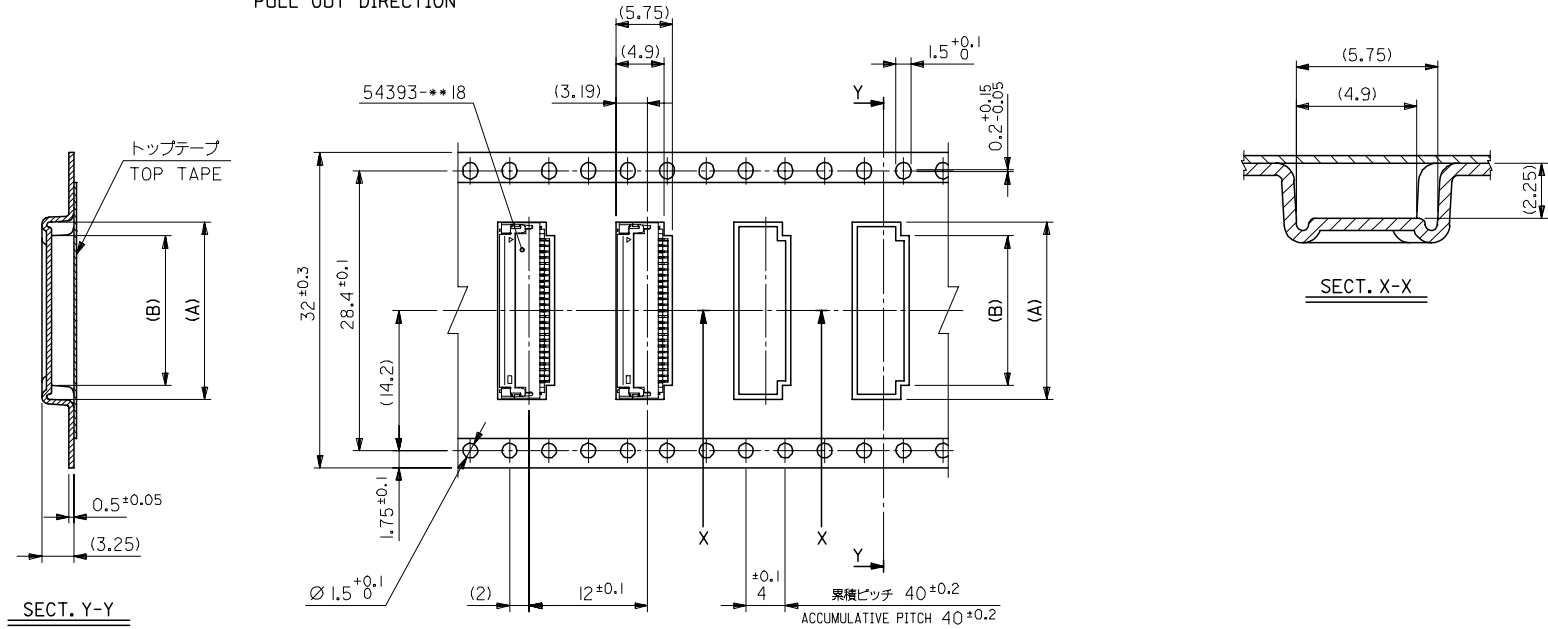
D

C

B

A

引き出し方向  
PULL OUT DIRECTION



SECT. Y-Y

SECT. X-X

32mm幅キャリアテープ  
32mm WIDTH CARRIER TAPE

|                                |      |      |      |      |              |            |
|--------------------------------|------|------|------|------|--------------|------------|
| 32                             | 37.4 | 33.4 | 15.2 | 18.0 | 54393-5181   | 51         |
| キャリアテープ幅<br>CARRIER TAPE WIDTH | D    | C    | B    | A    | MATERIAL NO. | 種数<br>CKT. |

54393-\*\*\*81 MODEL NO.

|  |  |         |  |                   |   |                              |                           |
|--|--|---------|--|-------------------|---|------------------------------|---------------------------|
| REVISED<br>EC NO: J2006-3255<br>DRW:HYAJIMA 2006/05/22<br>CHKD:MANAKA 2006/05/22<br>APPR:NUKITA 2006/05/26 | GENERAL TOLERANCES<br>(UNLESS SPECIFIED) |         | DIMENSION STYLE<br>MM ONLY                                 |                   | SCALE<br>---  | DESIGN UNITS<br>METRIC       | THIRD ANGLE<br>PROJECTION |
|  | 10 UNDER                                 | ± ---   | DRAWN BY<br>H. SHIMABUKUR                                  | DATE<br>'04/01/29 | TITLE<br>0.3 FPC CONN (EASY ON)<br>HSG ASSY EMBSTP PKG<br>-LEAD FREE- |                              |                           |
|  | 10 OVER 30 UNDER                         | ± ---   | CHECKED BY<br>K. TOJO                                      | DATE<br>'04/01/29 | MOLEX INCORPORATED  |                              |                           |
|  | 30 OVER                                  | ± ---   | APPROVED BY<br>M. SASAO                                    | DATE<br>'04/01/29 | MATERIAL NO.<br>SEE CHART   | DOCUMENT NO.<br>SD-54393-023 | SHEET NO.<br>4 OF 4       |
|  | ANGULAR                                  | ± --- ° | DRAFT WHERE APPLICABLE<br>MUST REMAIN<br>WITHIN DIMENSIONS |                   |   |                              |                           |

9

8

7

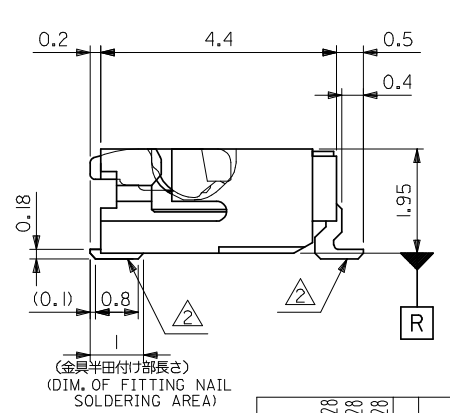
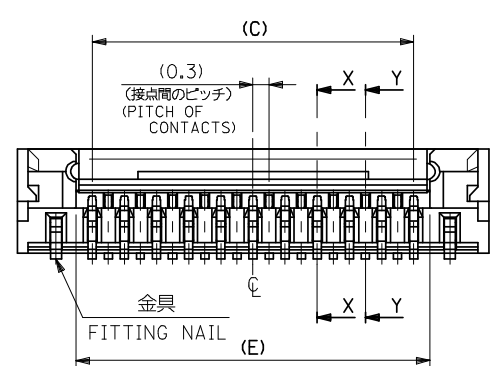
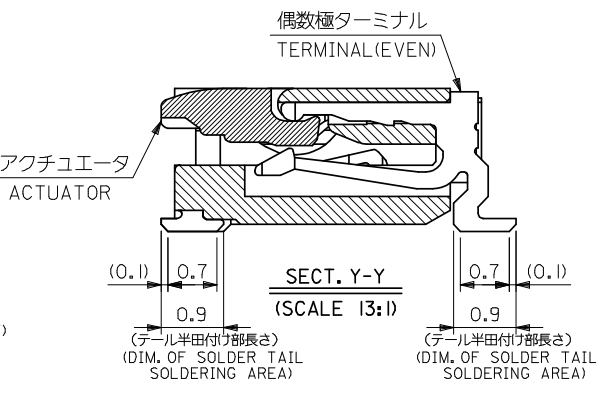
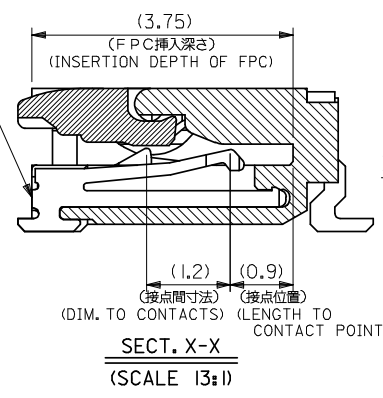
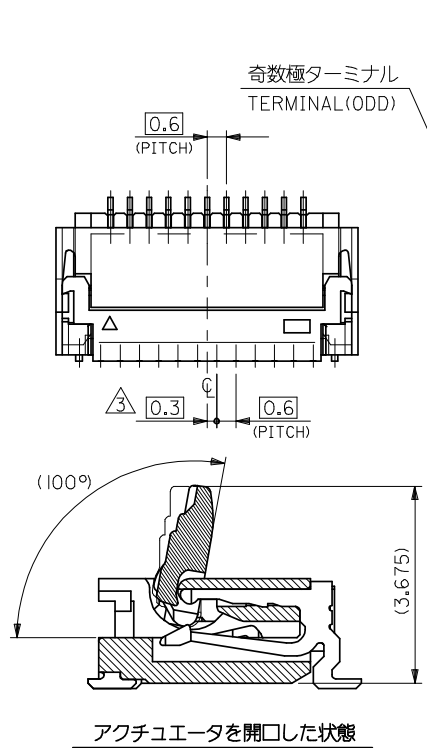
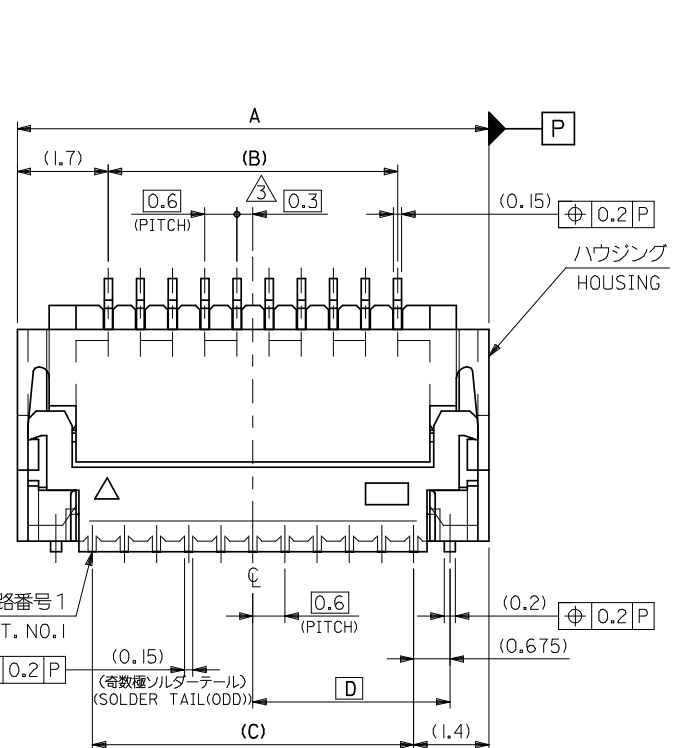
6

5

4

3

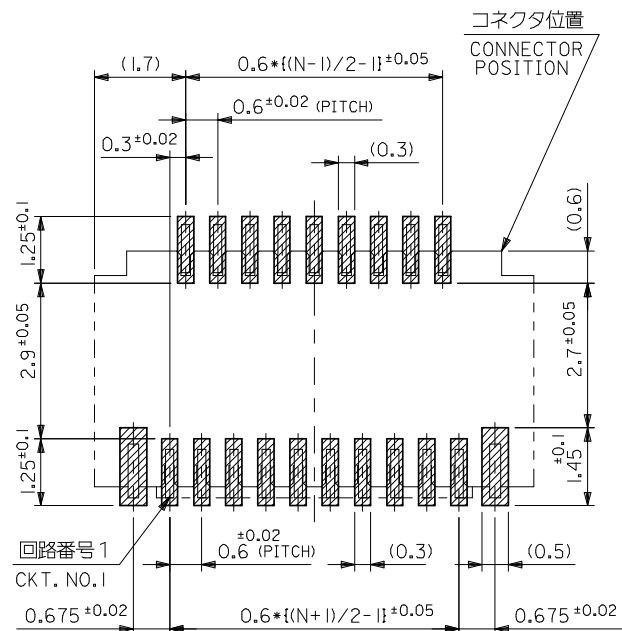
2



- 注記 NOTES**
1. 使用材料 MATERIAL  
 ハウジング : LCP , UL94V-0  
 HOUSING  
 アクチュエータ : PPS , UL94V-0  
 ACTUATOR  
 ターミナル : リン青銅 (t=0.15) , ニッケル下地金メッキ  
 TERMINAL : PHOS-BRO. , GOLD OVER NICKEL PLATING.  
 金具 : リン青銅 (t=0.2) , ニッケル下地メッキ  
 FITTING NAIL : PHOS-BRO. , TIN OVER NICKEL PLATING.  
 ⚠️ ソルダーテール半田付け面のスレ量、及び金具半田付け面のスレ量は、基準面 R に対し、上方向 OMA X、下方向 O.18 MAX. とする。  
 又、相互のバラつき量は 0.1 MAX. とする。  
 MISALIGNMENT OF SOLDER TAILS AND FITTING NAILS FROM R  
 UPPER DIRECTION : 0 MAX. , LOWER DIRECTION : 0.18 MAX.  
 OFFSET BETWEEN SOLDER TAILS AND FITTING NAILS : 0.1 MAX.  
 ⚠️ (N-1) / 2 が偶数の場合、偶数極側に適用。  
 (N-1) / 2 が奇数の場合、奇数極側に適用。  
 IF (N-1) / 2 = EVEN, APPLY FOR EVEN CIRCUIT SIDE,  
 IF (N-1) / 2 = ODD, APPLY FOR ODD CIRCUIT SIDE.
  2. 一般公差 : ±0.3  
 GENERAL TOLERANCES : ±0.3
  3. 本製品は 54393- \*\*77 の鉛フリー品です  
 THIS PRODUCT IS LEAD FREE OF 54393- \*\*77

|      |       |      |      |      |                                   |            |                   |
|------|-------|------|------|------|-----------------------------------|------------|-------------------|
| 15.6 | 8.175 | 15   | 14.4 | 17.8 | 54393-5181                        | 54393-5118 | 51                |
| 13.8 | 7.275 | 13.2 | 12.6 | 16   | 54393-4581                        | 54393-4518 | 45                |
| 12   | 6.375 | 11.4 | 10.8 | 14.2 | 54393-3981                        | 54393-3918 | 39                |
| 10.2 | 5.475 | 9.6  | 9    | 12.4 | 54393-3381                        | 54393-3318 | 33                |
| 8.4  | 4.575 | 7.8  | 7.2  | 10.6 | 54393-2781                        | 54393-2718 | 27                |
| 7.2  | 3.975 | 6.6  | 6.0  | 9.4  | 54393-2381                        | 54393-2318 | 23                |
| 6.6  | 3.675 | 6    | 5.4  | 8.8  | 54393-2181                        | 54393-2118 | 21                |
| 5.4  | 3.075 | 4.8  | 4.2  | 7.6  | 54393-1781                        | 54393-1718 | 17                |
| E    | D     | C    | B    | A    | EMBOSSED TAPE<br>ORDER No. オート-番号 |            | MATERIAL NO. CKT. |

|   |                                       |   |  |  |  |                        |                        |  |
|---|---------------------------------------|---|--|--|--|------------------------|------------------------|--|
| REVISED<br>EC NO: J2008-4034<br>DRWN: WABEI<br>CHKD: THARYAMA<br>APPR: NUKITA<br>2008/05/28<br>2008/05/28<br>2008/05/28 | GENERAL TOLERANCES (UNLESS SPECIFIED) |   | DIMENSION STYLE<br>MM ONLY               |  | SCALE<br>10:1  | DESIGN UNITS<br>METRIC | THIRD ANGLE PROJECTION |  |
|   | 10 UNDER                              | ± ---   | DRAWN BY DATE<br>H. SHIMABUKUR '04/01/29 |  | TITLE<br>0.3 FPC CONN (EASY ON)<br>HSG ASSY<br>-LEAD FREE- |                        |                        |  |
|   | 10 OVER 30 UNDER                      | ± ---   | CHECKED BY DATE<br>K. TOJO '04/01/29     |  | MOLEX INCORPORATED   |                        |                        |  |
|   | 30 OVER                               | ± ---   | APPROVED BY DATE<br>M. SASAO '04/01/29   |  | DOCUMENT NO.<br>SD-54393-024                               |                        | SHEET NO.<br>1 OF 2    |  |
|   | ANGULAR ± --- °                       |   | MATERIAL NO.<br>SEE TABLE                |  |  |                        |                        |  |
| DRAFT WHERE APPLICABLE MUST REMAIN WITHIN DIMENSIONS  |                                       | THIS DRAWING CONTAINS INFORMATION THAT IS PROPRIETARY TO MOLEX INCORPORATED AND SHOULD NOT BE USED WITHOUT WRITTEN PERMISSION |  |  |  |                        |                        |  |

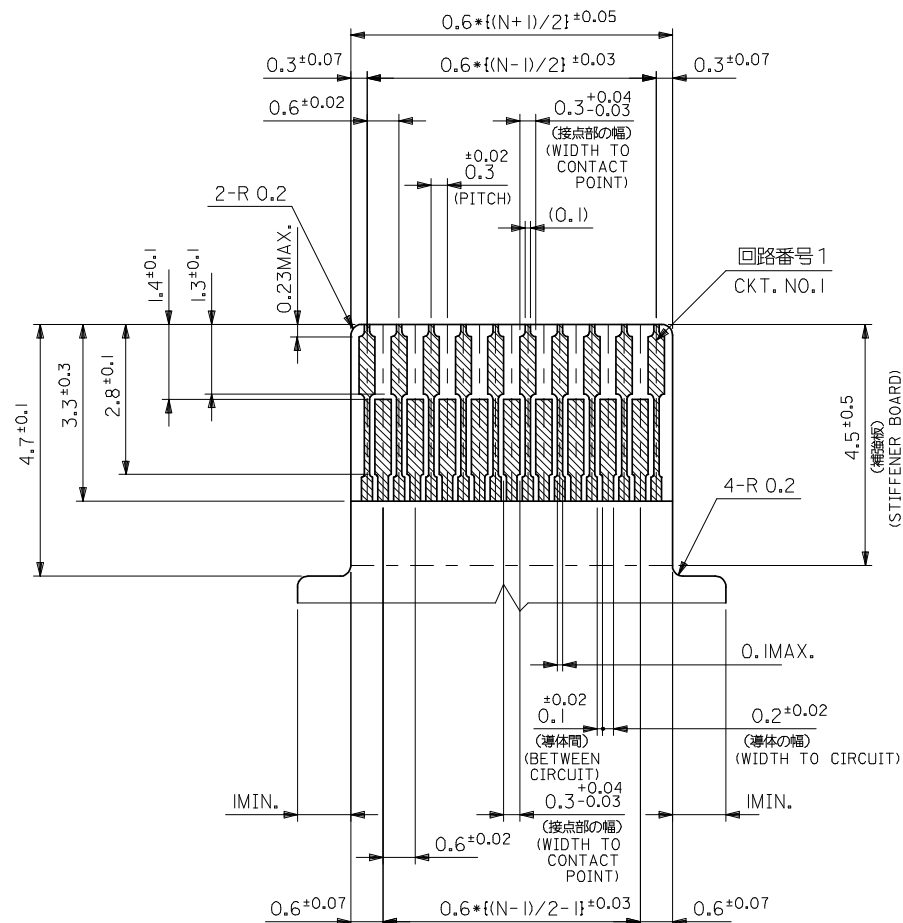


FPC挿入側  
FPC INSERTION SIDE

参考基板レイアウト  
RECOMMENDED P.C.BOARD  
PATTERN DIM. (REF.)  
(マウント面)  
(MOUNTING SIDE)

FPCについて：  
打抜き方向は導体側から補強板側を推奨致します。  
補強フィルム材質はポリイミドを推奨致します。  
接着剤は熱硬化接着剤を推奨致します。

ABOUT FPC:  
RECOMMENDED PUNCHER DIRECTION : FROM CONDUCTOR SIDE TO STIFFENER BOARD SIDE.  
RECOMMENDED MATERIAL:  
STIFFENER FILM : POLYIMIDE  
BONDING AGENT : THERMOSETTING BONDING AGENT



適合FPC推奨寸法  
APPLICABLE FPC  
RECOMMENDED DIM.

(仕上がり厚さ: 0.2±0.03)  
(THICKNESS : 0.2±0.03)

|   |   |  |        |   |                   |  |                        |                           |  |
|---|---|--|--------|---|-------------------|--|------------------------|---------------------------|--|
| REVISED<br>EC NO: J2008-4034<br>DRWN: MWABEI<br>CHKD: THARUYAMA<br>APPR: NUKITA | DESCRIPTION<br>2008/05/28<br>2008/05/28<br>2008/05/28 | GENERAL TOLERANCES<br>(UNLESS SPECIFIED)                   |        | DIMENSION STYLE<br>MM ONLY  |                   | SCALE<br>---   | DESIGN UNITS<br>METRIC | THIRD ANGLE<br>PROJECTION |  |
|   |   | 10 UNDER   | ±---   | DRAWN BY<br>H. SHIMABUKUR   | DATE<br>'04/01/29 | TITLE<br>0.3 FPC CONN (EASY ON)<br>HSG ASSY<br>-LEAD FREE- |                        |                           |  |
|   |   | 10 OVER 30 UNDER   | ±---   | CHECKED BY<br>K. TOJO   | DATE<br>'04/01/29 | MOLEX INCORPORATED   |                        |                           |  |
|   |   | 30 OVER  | ±---   | APPROVED BY<br>M. SASAO   | DATE<br>'04/01/29 | DOCUMENT NO.<br>SD-54393-024                               |                        | SHEET NO.<br>2 OF 2       |  |
|   |   | ANGULAR  | ±--- ° | MATERIAL NO.<br>SEE SHEET 1   |                   |  |                        |                           |  |
| D   | REV   | DRAFT WHERE APPLICABLE<br>MUST REMAIN<br>WITHIN DIMENSIONS |        | SIZE<br>A3 THIS DRAWING CONTAINS INFORMATION THAT IS PROPRIETARY TO MOLEX<br>INCORPORATED AND SHOULD NOT BE USED WITHOUT WRITTEN PERMISSION |                   |  |                        |                           |  |