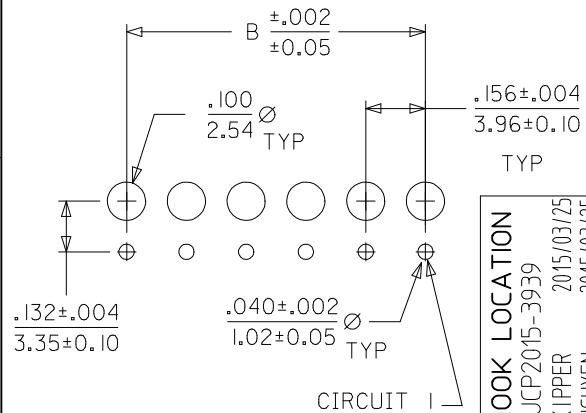


NOTES:

- HOUSING MATERIAL: NYLON, UL 94V-2
- FINISH:
 - (909) = OVERALL HOT TIN DIP: .000100/0.00254 MIN.
 - (197) OVERALL REFLOWED MATTE TIN: 0.00152/0.00060 MIN. OVER 0.00127/0.00050 MIN. NICKEL OVERALL.
 - (154) = OVERALL TIN: .000100/0.00254 MIN. OVERALL NICKEL UNDERPLATE: .000050/0.00127 MIN.
 - (208) = SELECT GOLD: .000015/0.00038 MIN. SELECT TIN: .000100/0.00254 MIN. OVERALL NICKEL UNDERPLATE: .000050/0.00127 MIN.
- PRODUCT SPECIFICATION: PS-08-50
- PACKAGING INFORMATION: SEE CHARTS.
- SOLDERABILITY SPECIFICATION: SMES-152
- RIGHT ANGLE OPTIONS: SEE DRAWING SDA-2145-001.
- TOP ENTRY OPTIONS: SEE DRAWING SDA-2145-002.
- .132/3.35 DIMENSION IS CENTER OF TERMINAL TO CENTER OF MATING PIN AND DOES NOT REFLECT CENTER OF THE CONNECTOR HOUSING WINDOW DIMENSION.
- THIS PART CONFORMS TO CLASS B REQUIREMENTS OF COSMETIC SPECIFICATION PS-45499-002.

| CKT | A | B | CENTER HOOK(S) LOCATED BETWEEN CIRCUITS |
|-----|----------------|--------------------------|---|
| 02 | .308 7.82 | .156±.005 3.96±0.13 | NONE |
| 03 | .464 11.79 | .312±.005 7.92±0.13 | NONE |
| 04 | .620 15.75 | .468±.005 11.89±0.13 | NONE |
| 05 | .776 19.71 | .624±.005 15.85±0.13 | NONE |
| 06 | .932 23.67 | .780±.005 19.81±0.13 | NONE |
| 07 | 1.088 27.64 | .936±.010 23.77±0.25 | NONE |
| 08 | 1.244 31.60 | 1.092±.010 27.74±0.25 | 4 & 5 |
| 09 | 1.400 35.56 | 1.248±.010 31.70±0.25 | 4 & 5 |
| 10 | 1.556 39.52 | 1.404±.010 35.66±0.25 | 5 & 6 |
| 11 | 1.712 43.48 | 1.560±.010 39.62±0.25 | 5 & 6 |
| 12 | 1.868 47.45 | 1.716±.010 43.59±0.25 | 4 & 5, 8 & 9 |
| 13 | 2.024 51.41 | 1.872±.010 47.55±0.25 | 6 & 7, 11 & 12 |
| 14 | 2.180 55.37 | 2.028±.014 51.51±0.36 | 5 & 6, 9 & 10 |
| 15 | 2.336 59.33 | 2.184±.014 55.47±0.36 | 5 & 6, 10 & 11 |

| | |
|------|------|
| 2 | Z |
| 1 | Z1 |
| SHT. | REV. |



PCB LAYOUT: COMPONENT SIDE
RECOMMENDED PCB THICKNESS .062/1.57

| ADD HOOK LOCATION | QUALITY SYMBOLS |
|-------------------------|-----------------|
| EC NO: UCP2015-3939 | ▽ F = 0 |
| DRWN:MKIPPER 2015/03/25 | ▽ E = 0 |
| CHKD:NGUYEN 2015/03/25 | ▽ F = 0 |
| APPR:FSM:TH 2015/03/27 | |
| DESCRIPTION | |
| REV | |

| GENERAL TOLERANCES (UNLESS SPECIFIED) | |
|--|---------------|
| | mm INCH |
| 4 PLACES | ± --- ± --- |
| 3 PLACES | ± --- ± .010 |
| 2 PLACES | ± 0.25 ± .014 |
| 1 PLACE | ± 0.36 ± --- |
| 0 PLACE | ± ± |
| ANGULAR ± 1/2° | |
| DRAFT WHERE APPLICABLE MUST REMAIN WITHIN DIMENSIONS | |

| DIMENSION STYLE IN/MM | |
|-----------------------|----------|
| DRAWN BY | DATE |
| SAMIEC | 01/16/03 |
| CHECKED BY | DATE |
| SAMIEC | 01/16/03 |
| APPROVED BY | DATE |
| MARGULIS | 01/16/03 |
| MATERIAL NO. | |
| SEE CHART | |
| SIZE | |
| A | |

| SCALE --- | DESIGN UNITS INCH | THIRD ANGLE PROJECTION |
|--|-------------------|------------------------|
| TITLE | | |
| KK 156 HOUSING ASSY PC TAIL BOTTOM ENTRY | | |
| molex | | |
| DOCUMENT NO. | SDA-2145-003 | SHEET NO. 1 OF 4 |



KK 156 PCB ASSY 2-15 CKT

2145 BOTTOM ENTRY SERIES

| OPTIONS | RAMPS | YES | RAMPS | YES |
|---------|--------------|---------------------|--------------|---------------------|
| | HOOKS: | YES | HOOKS: | YES |
| | COLOR: | WHITE | COLOR: | WHITE |
| | MOLD VOID: | NONE | MOLD VOID: | NONE |
| | TERM MATL: | PHOS BRONZE | TERM MATL: | PHOS BRONZE |
| | CONTACT: | STANDARD | CONTACT: | STANDARD |
| | PC TAIL (C): | .160 / 4.06 | PC TAIL (C): | .160 / 4.06 |
| | PLT CODE: | 197 – TIN | PLT CODE: | 208 – 15 GOLD |
| | TERM VOID: | NONE | TERM VOID: | NONE |
| | PACKAGING: | TRAY PK-2145-001 | PACKAGING: | TRAY PK-2145-001 |
| Ckt | Material No | Material No | | |
| 2 | 09-62-6024 | 09-62-4028 | | |
| 3 | 09-62-6034 | 09-62-4038 | | |
| 4 | 09-62-6044 | 09-62-4048 | | |
| 5 | 09-62-6054 | 09-62-4058 | | |
| 6 | 09-62-6064 | 09-62-4068 | | |
| 7 | 09-62-6074 | 09-62-4078 | | |
| 8 | 09-62-6084 | 09-62-4088 | | |
| 9 | 09-62-6094 | 09-62-4098 | | |
| 10 | 09-62-6104 | 09-62-4108 | | |
| 11 | 09-62-6114 | 09-62-4118 | | |
| 12 | 09-62-6124 | 09-62-4128 | | |
| 13 | 09-62-6134 | 09-62-4138 | | |
| 14 | 09-62-6144 | 09-62-4148 | | |
| 15 | 09-62-6154 | 09-62-4158 | | |

| | | | |
|-------------------------|--|--|----------------------------------|
| REV: | CHANGE PLATING UCP2012-1821 1/04/2012 MMSTROH | TITLE: KK 156 PCB ASSY 2145 BOTTOM ENTRY SERIES | <u>SHEET No.</u> - 2 - |
| DOCUMENT NUMBER: | CREATED / REVISED BY: | CHECKED BY: | APPROVED BY: |
| SDA-2145-003 | MMSTROH | MKIPPER | FSMITH |



KK 156 PCB ASSY 2-15 CKT

2145 BOTTOM ENTRY SERIES

| OPTIONS | RAMPS | YES | RAMPS | YES | RAMPS | YES | RAMPS | YES |
|---------|--------------|---------------------|--------------|---------------------|--------------|---------------------|--------------|---------------------|
| | HOOKS: | YES | HOOKS: | YES | HOOKS: | YES | HOOKS: | YES |
| | COLOR: | WHITE | COLOR: | WHITE | COLOR: | WHITE | COLOR: | WHITE |
| | MOLD VOID: | NONE | MOLD VOID: | NONE | MOLD VOID: | NONE | MOLD VOID: | NONE |
| | TERM MATL: | PHOS BRONZE | TERM MATL: | BRASS | TERM MATL: | BRASS | TERM MATL: | BRASS |
| | CONTACT: | STANDARD | CONTACT: | STANDARD | CONTACT: | STANDARD | CONTACT: | STANDARD |
| | PC TAIL (C): | .160 / 4.06 | PC TAIL (C): | .160 / 4.06 | PC TAIL (C): | .160 / 4.06 | PC TAIL (C): | .126 / 3.20 |
| | PLT CODE: | P909 – TIN | PLT CODE: | P909 – TIN | PLT CODE: | 208 – 15 GOLD | PLT CODE: | P909 – TIN |
| | TERM VOID: | NONE | TERM VOID: | NONE | TERM VOID: | NONE | TERM VOID: | NONE |
| | PACKAGING: | TRAY PK-2145-001 | PACKAGING: | TRAY PK-2145-001 | PACKAGING: | TRAY PK-2145-001 | PACKAGING: | TRAY PK-2145-001 |
| Ckt | Material No | | Material No | | Material No | | Material No | |
| 2 | 09-52-2028 | | 09-52-3022 | | 09-62-3022 | | 09-52-5022 | |
| 3 | 09-52-2038 | | 09-52-3032 | | 09-62-3032 | | 09-52-5032 | |
| 4 | 09-52-2048 | | 09-52-3042 | | 09-62-3042 | | 09-52-5042 | |
| 5 | 09-52-2058 | | 09-52-3052 | | 09-62-3052 | | 09-52-5052 | |
| 6 | 09-52-2068 | | 09-52-3062 | | 09-62-3062 | | 09-52-5062 | |
| 7 | 09-52-2078 | | 09-52-3072 | | 09-62-3072 | | 09-52-5072 | |
| 8 | 09-52-2088 | | 09-52-3082 | | 09-62-3082 | | 09-52-5082 | |
| 9 | 09-52-2098 | | 09-52-3092 | | 09-62-3092 | | 09-52-5092 | |
| 10 | 09-52-2108 | | 09-52-3102 | | 09-62-3102 | | 09-52-5102 | |
| 11 | 09-52-2118 | | 09-52-3112 | | 09-62-3112 | | 09-52-5112 | |
| 12 | 09-52-2128 | | 09-52-3122 | | 09-62-3122 | | 09-52-5122 | |
| 13 | 09-52-2138 | | 09-52-3132 | | 09-62-3132 | | 09-52-5132 | |
| 14 | 09-52-2148 | | 09-52-3142 | | 09-62-3142 | | 09-52-5142 | |
| 15 | 09-52-2158 | | 09-52-3152 | | 09-62-3152 | | 09-52-5152 | |

| | | | |
|--|--|--|--------------------------------------|
| <u>REV:</u> Z | CHANGE PLATING UCP2012-1821 1/04/2012 MMSTROH | <u>TITLE:</u> KK 156 PCB ASSY 2145 BOTTOM ENTRY SERIES | <u>SHEET No.</u> - 3 - |
| <u>DOCUMENT NUMBER:</u> SDA-2145-003 | | <u>CREATED / REVISED BY:</u> MMSTROH | <u>CHECKED BY:</u> MKIPPER |
| | | <u>APPROVED BY:</u> FSMITH | |



KK 156 PCB ASSY 2-15 CKT

2145 BOTTOM ENTRY SERIES

| | |
|--------------|--------------|
| Assy Proc: | BOTTOM ENTRY |
| Housing No: | 2145-N-AN |
| Terminal No: | 6298-154 |
| Dim C: | .160 / 4.06 |
| Plating: | 154-TIN |
| Packaging: | PK-2145-001 |
| Voids: | NO |

| | |
|--------------|--|
| Assy Proc: | |
| Housing No: | |
| Terminal No: | |
| Dim C: | |
| Plating: | |
| Packaging: | |
| Voids: | |

| | |
|--------------|--|
| Assy Proc: | |
| Housing No: | |
| Terminal No: | |
| Dim C: | |
| Plating: | |
| Packaging: | |
| Voids: | |

| | |
|--------------|--|
| Assy Proc: | |
| Housing No: | |
| Terminal No: | |
| Dim C: | |
| Plating: | |
| Packaging: | |
| Voids: | |

| Ckts | Material No | Engineer Number | Material No | Engineer Number | Material No | Engineer Number | Material No | Engineer Number |
|------|-------------|------------------|-------------|-----------------|-------------|-----------------|-------------|-----------------|
| 2 | 50-30-4405 | A-2145-BA02L-154 | | | | | | |
| 3 | 50-30-4406 | A-2145-BA03L-154 | | | | | | |
| 4 | 50-30-4407 | A-2145-BA04L-154 | | | | | | |
| 5 | 50-30-4408 | A-2145-BA05L-154 | | | | | | |
| 6 | 50-30-4409 | A-2145-BA06L-154 | | | | | | |
| 7 | 50-30-4411 | A-2145-BA07L-154 | | | | | | |
| 8 | 50-30-4412 | A-2145-BA08L-154 | | | | | | |
| 9 | 50-30-4413 | A-2145-BA09L-154 | | | | | | |
| 10 | 50-30-4414 | A-2145-BA10L-154 | | | | | | |
| 11 | 50-30-4415 | A-2145-BA11L-154 | | | | | | |
| 12 | 50-30-4416 | A-2145-BA12L-154 | | | | | | |
| 13 | 50-30-4417 | A-2145-BA13L-154 | | | | | | |
| 14 | 50-30-4418 | A-2145-BA14L-154 | | | | | | |
| 15 | 50-30-4419 | A-2145-BA15L-154 | | | | | | |

| | | | |
|---------------------|--|--|----------------------------------|
| REV: | CHANGE PLATING UCP2012-1821 1/04/2012 MMSTROH | <u>TITLE:</u> KK 156 PCB ASSY 2145 BOTTOM ENTRY SERIES | <u>SHEET No.</u> - 4 - |
| DOCUMENT NUMBER: | CREATED / REVISED BY: | CHECKED BY: | APPROVED BY: |
| SDA-2145-003 | MMSTROH | MKIPPER | FSMITH |