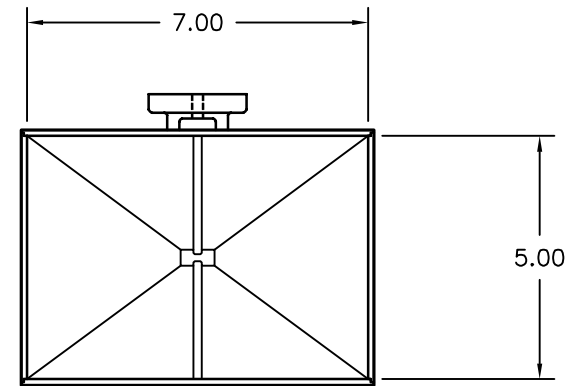
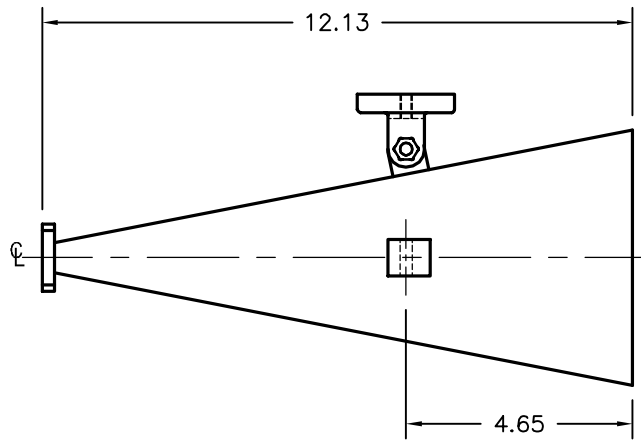
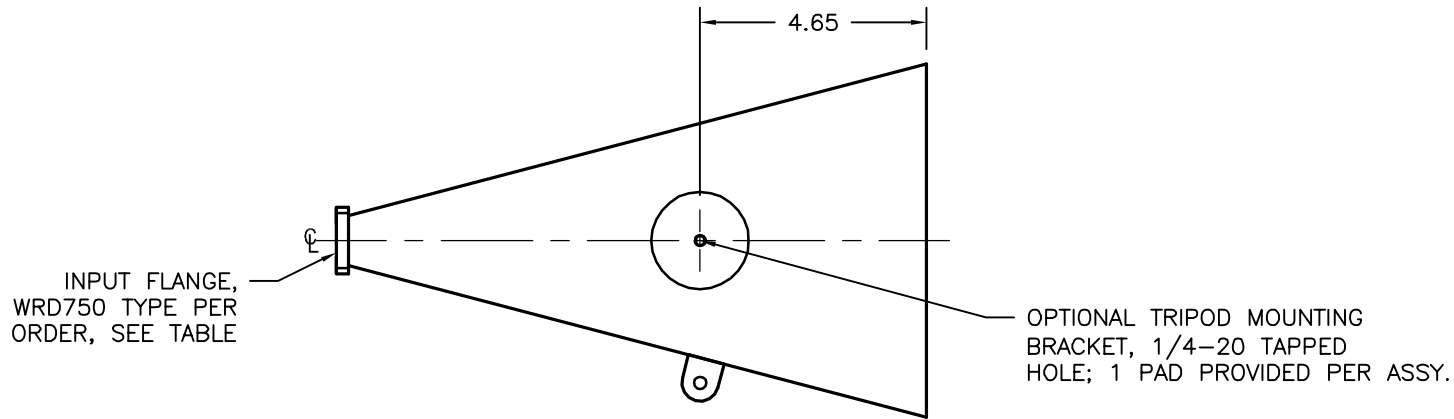


REV A	AUTH RL	DATE 03/20/06	INITIAL RELEASE
REV B	AUTH RL	DATE 11/16/06	UPDATED TO SHOW TRIPOD MOUNTING, MODEL NUMBER CORRECTED.



*DOUBLE RIDGE FLANGE TYPES		
DESIGNATION	TYPE	HOLE PATTERN
C1	COVER	ALL THRU/TAPPED
C2	COVER	ALL TAPPED
C3	COVER	ALL THROUGH
G1	GROOVE	ALL THRU/TAPPED
G2	GROOVE	ALL TAPPED
G3	GROOVE	ALL THROUGH

MODEL SPECIFICATIONS

MECHANICAL

MODEL NUMBER: 750-442-XX*
 MATERIAL: 6061/T-6 ALUM.
 FINISH: UNIQUE 316 STAINLESS STEEL
 EPOXY COATING
 FLANGES: WRD750 PER ORDER, *SEE TABLE

ELECTRICAL

FREQ. RANGE: 8.0-18.0 GHz
 GAIN: 20dB
 VSWR: 1.85

THIRD ANGLE PROJECTION:		APPROVALS	DATE	ADVANCED TECHNICAL MATERIALS, INC. TEL: (631) 289-0363 FAX: (631) 289-0358 www.atmmicrowave.com	<small>THE INFORMATION IN THIS DRAWING IS PROPRIETARY AND SHALL NOT BE USED OR DISCLOSED WITHOUT THE PRIOR WRITTEN CONSENT OF ATM, INC. DO NOT SCALE DWG.</small>		
UNLESS OTHERWISE NOTED, DIMENSIONS ARE IN INCHES, TOLERANCES ARE: FRACTIONS: ±1/64 ANGLES: ±1/2°		DRAWN RL	03/20/06				
BASIC DIMENSION	DECIMALS 2 PLACE 3 PLACE	CHKD.	APRVD.	OUTLINE, WRD750 HORN ANTENNA			
UNDER 6"	±.02 ±.005	MATERIAL ALUM.					
6" - 12"	±.03 ±.010	TREATMENT -					
OVER 12"	±.06 ±.015	FINISH SEE NOTES		SIZE A	CAGE CODE OR8N4	ATM DWG # 6678W	REVISION B
		SCALE 1 : 4		MODEL # 750-442-XX	SHEET 1/1		