



## FEATURES AND SPECIFICATIONS

### Features and Benefits

- 2 to 14 circuits
- High reliability rising clamp
- Captive screw
- 130°C operating temperature
- Posi-drive 4mm screw for superior torque transmission to clamp
- Extended wide entry funnel to protect exposed wire

### Electrical

Voltage: 600V  
 Maximum Current: 60 Amp - 9105XX  
 40 Amp - 9135XX  
 Insulation Resistance: >50,000 Gigaohms

### Mechanical

Rec. Tightening Torque: 12 in. lbs, 1.36Nm  
 Operating Temperature: 130°C  
 Wire Strip Length: 7/16" or 10mm

### Physical

Housing: VALOX 420SEO, PBT, Black  
 Screws: Bronze  
 Screw Plating: Tin  
 Pressure Clamp: Brass  
 Pressure Clamp Plating: Nickel  
 Contacts: Copper  
 Contact Plating: Tin  
 Wire Range: 6 to 18 AWG, 10 to .75mm<sup>2</sup> - 9105XX  
 8 to 18 AWG, 6 to .75mm<sup>2</sup> - 9135XX

### Reference Information

UL File No: E48521  
 Guide No: XCFR2  
 UL for Canada  
 UL File No: E48521  
 Guide No: XCFR8

**10.16mm (.400") Pitch**  
**Beau Eurostyle®**  
**High Power**  
**Fixed Blocks**

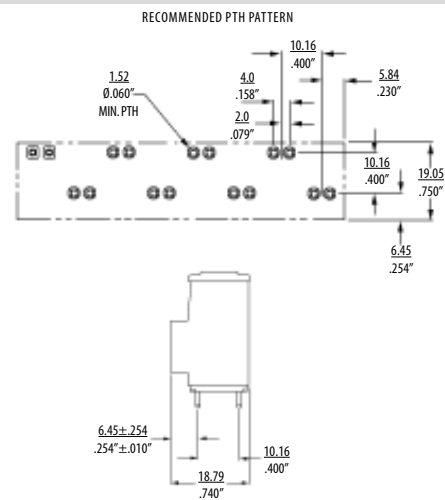
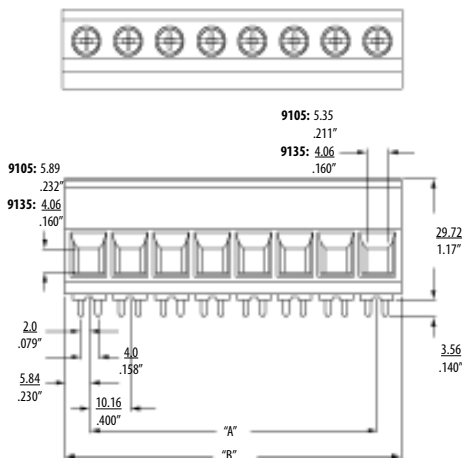
**39910**

**High Voltage, High Power**



**91 Series**

## CATALOG DRAWING (FOR REFERENCE ONLY)



## ORDERING INFORMATION AND DIMENSIONS

Part Numbers*				# of Circuits	Dimensions			
60 Amp		40 Amp			A		B	
Order #	Engineering #	Order #	Engineering #	in	mm	in	mm	
39910-0102	910502	39910-0302	913502	2	.40	10.16	.86	21.84
39910-0103	910503	39910-0303	913503	3	.80	20.32	1.26	32.00
39910-0104	910504	39910-0304	913504	4	1.20	30.48	1.66	42.16
39910-0105	910505	39910-0305	913505	5	1.60	40.64	2.06	52.32
39910-0106	910506	39910-0306	913506	6	2.00	50.80	2.46	62.48
39910-0107	910507	39910-0307	913507	7	2.40	60.96	2.86	72.64
39910-0108	910508	39910-0308	913508	8	2.80	71.12	3.26	82.80
39910-0109	910509	39910-0309	913509	9	3.20	81.28	3.66	92.96
39910-0110	910510	39910-0310	913510	10	3.60	91.44	4.06	103.12
39910-0111	910511	39910-0311	913511	11	4.00	101.60	4.46	113.28
39910-0112	910512	39910-0312	913512	12	4.40	111.76	4.86	123.44
39910-0113	910513	39910-0313	913513	13	4.80	121.92	5.26	133.60
39910-0114	910514	39910-0314	913514	14	5.20	132.10	5.66	143.76

\* Consult factory for imprinting and other options