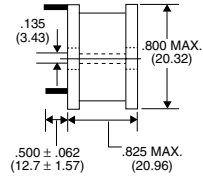
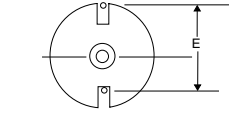




DB2 High Current Power Line Chokes

PART NUMBER	INDUCTANCE μH @ 1 kHz	DCR OHMS (MAX)	SATURATION CURRENT DC AMPS	CURRENT RATING DC AMPS	E DIMENSIONS INCHES	LEAD DIAMETER	CORE MATERIAL
DB2-331	3.3 ± 20%	.003	58.0	20.6	.650 (16.51)	.0720 (1.83)	FERRITE
DB2-391	3.9 ± 20%	.003	50.0	20.6	.650 (16.51)	.0720 (1.83)	FERRITE
DB2-471	4.7 ± 20%	.003	50.0	20.6	.650 (16.51)	.0720 (1.83)	FERRITE
DB2-561	5.6 ± 20%	.003	44.0	20.6	.650 (16.51)	.0720 (1.83)	FERRITE
DB2-681	6.8 ± 20%	.004	39.0	17.8	.675 (17.15)	.0720 (1.83)	FERRITE
DB2-821	8.2 ± 20%	.004	36.0	17.8	.675 (17.15)	.0720 (1.83)	FERRITE
DB2-102	10 ± 10%	.005	30.0	15.9	.630 (16.00)	.0641 (1.63)	FERRITE
DB2-122	12 ± 10%	.007	27.0	13.5	.630 (16.00)	.0571 (1.45)	FERRITE
DB2-152	15 ± 10%	.009	25.0	11.9	.630 (16.00)	.0508 (1.29)	FERRITE
DB2-182	18 ± 10%	.013	22.0	9.9	.630 (16.00)	.0508 (1.29)	FERRITE
DB2-222	22 ± 10%	.014	21.0	9.5	.600 (15.24)	.0453 (1.15)	FERRITE
DB2-272	27 ± 10%	.020	20.5	8.0	.600 (15.24)	.0403 (1.02)	FERRITE
DB2-332	33 ± 10%	.022	18.6	7.6	.600 (15.24)	.0403 (1.02)	FERRITE
DB2-392	39 ± 10%	.026	17.0	7.0	.600 (15.24)	.0403 (1.02)	FERRITE
DB2-472	47 ± 10%	.026	15.1	7.0	.600 (15.24)	.0403 (1.02)	FERRITE
DB2-562	56 ± 10%	.031	13.6	6.4	.600 (15.24)	.0403 (1.02)	FERRITE
DB2-682	68 ± 10%	.036	12.7	5.9	.600 (15.24)	.0403 (1.02)	FERRITE
DB2-822	82 ± 10%	.044	11.3	5.4	.600 (15.24)	.0359 (0.91)	FERRITE
DB2-103	100 ± 10%	.060	10.4	4.6	.580 (14.73)	.0320 (0.81)	FERRITE
DB2-123	120 ± 10%	.067	9.4	4.3	.580 (14.73)	.0320 (0.81)	FERRITE
DB2-153	150 ± 10%	.075	8.6	4.1	.580 (14.73)	.0320 (0.81)	FERRITE
DB2-183	180 ± 10%	.090	7.8	3.8	.580 (14.73)	.0320 (0.81)	FERRITE
DB2-193	190 ± 10%	.110	7.6	3.4	.580 (14.73)	.0285 (0.72)	FERRITE
DB2-223	220 ± 10%	.114	7.0	3.3	.580 (14.73)	.0285 (0.72)	FERRITE
DB2-253	250 ± 10%	.135	6.5	3.1	.580 (14.73)	.0285 (0.72)	FERRITE
DB2-273	270 ± 10%	.155	6.3	2.9	.580 (14.73)	.0285 (0.72)	FERRITE
DB2-333	330 ± 10%	.175	5.2	2.7	.600 (15.24)	.0285 (0.72)	FERRITE
DB2-393	390 ± 10%	.195	4.9	2.5	.600 (15.24)	.0253 (0.64)	FERRITE
DB2-473	470 ± 10%	.209	4.5	2.5	.600 (15.24)	.0253 (0.64)	FERRITE
DB2-563	560 ± 10%	.300	4.1	2.1	.570 (14.49)	.0226 (0.57)	FERRITE
DB2-683	680 ± 10%	.399	3.7	1.8	.570 (14.49)	.0226 (0.57)	FERRITE
DB2-823	820 ± 10%	.445	3.4	1.7	.570 (14.49)	.0201 (0.51)	FERRITE
DB2-104	1000 ± 10%	.484	3.1	1.6	.570 (14.49)	.0201 (0.51)	FERRITE
DB2-124	1200 ± 10%	.550	2.7	1.5	.570 (14.49)	.0201 (0.51)	FERRITE
DB2-154	1500 ± 10%	.746	2.4	1.3	.570 (14.49)	.0179 (0.45)	FERRITE
DB2-184	1800 ± 10%	.985	2.2	1.1	.570 (14.49)	.0159 (0.40)	FERRITE
DB2-224	2200 ± 10%	1.149	2.0	1.1	.570 (14.49)	.0159 (0.40)	FERRITE



in. (mm)

NOTES:

- Operating temperature -55°C to +125°C
- Leads tinned to within .062 of body
- Epoxy insulated core
- Winding periphery wrapped to secure winding and lead positioning

PACKAGING SPECS:

Bulk only.

Mouser Electronics

Authorized Distributor

Click to View Pricing, Inventory, Delivery & Lifecycle Information:

[Gowanda Electronics:](#)

[DB2-103](#)