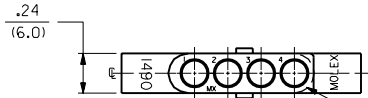


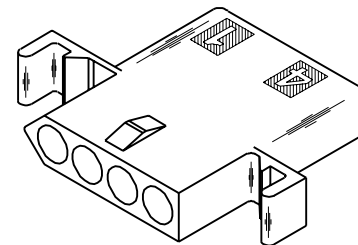
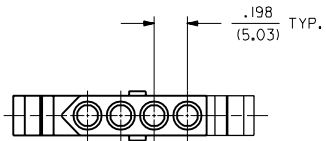
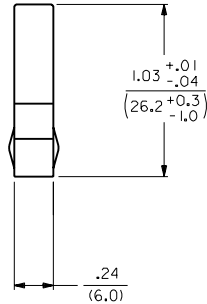
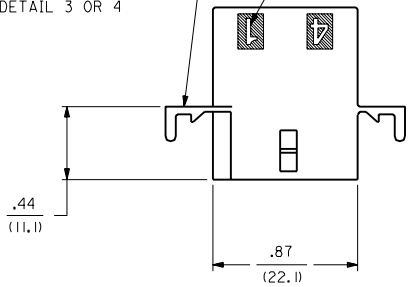
RECEPTACLE



ALTERNATE CONFIGURATION

OPTIONAL MOUNTING EAR (2 PL.)
(STD. MOUNTING EAR SHOWN)
SEE DETAIL 3 OR 4

CIRCUIT I.D. \triangle



RECEPTACLE HOUSING

DIMENSIONS SHOWN (METRIC) INCH $\nabla = 0$ $\blacktriangledown = 0$ REVISE ONLY ON CAD SYSTEM

UNLESS OTHERWISE SPECIFIED TOLERANCES: ANGULAR $\pm .004$ TO	
INCH	METRIC
3 PLACE $\pm .010$	---
2 PLACE $\pm .014$	± 0.25
1 PLACE ---	± 0.35

DRAFT WHERE APPLICABLE MUST REMAIN WITHIN DIMENSIONS

DRW: CEP CHKD: RW
BY: RAS SCALE: 2 : 1

TITLE .093/(2.36) HOUSING, PLUG AND RECEPTACLE, 4 CKT. $\pm .198$ /(5.03) CTRS.		SHEET NO. 2	DATE 3/10/88
PART NO. MOLEX INCORPORATED L15LEJLL 60532 U.S.A.		DRWG. NO. SD-1490-*	SIZE CP C
SEE CHART			
THIS DRAWING CONTAINS INFORMATION THAT IS PROPRIETARY TO MOLEX INC. AND SHOULD NOT BE USED WITHOUT WRITTEN PERMISSION.			

LTR.	REVISIONS	LTR.	REVISIONS
T	SEE SHT. 1		
S	SEE SHT. 1		
R	SEE SHT. 1		
P	SEE SHT. 1		

PLUG	
PART NO.	ENG. NO.
03-09-2041	I490-P
03-09-2042	I490-PI
03-09-7041	I490-PBK
03-09-7042	I490-PIBK
PRELIMINARY	I490-P2
03-09-3042	I490-PIBU

RECEPTACLE	
PART NO.	ENG. NO.
03-09-1041	I490-R
03-09-1042	I490-R1
03-09-6041	I490-RBK
03-09-6042	I490-RIBK
03-09-1043	I490-R2
03-09-6043	I490-RBU
03-09-6045	I490-RGN

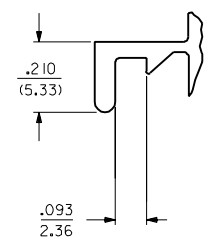
LEGEND:

I490-***-*

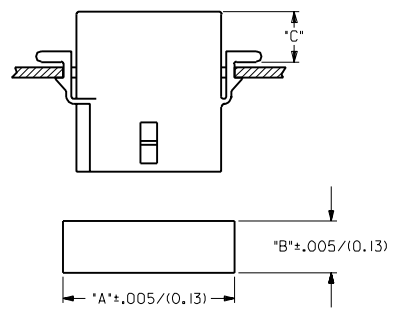
P = PLUG
R = RECEPTACLE

BLANK = WITH STANDARD EARS
1 = WITHOUT EARS
2 = WITH PREBENT EARS, PER DETAIL 4

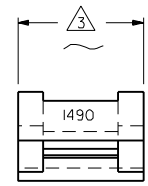
COLOR: BLANK=NATURAL COLOR
AM=AMBER BK=BLACK BU=BLUE
BN=BROWN CY=GRAY GN=GREEN
OR=ORANGE RD=RED YW=YELLOW
BLANK = MATERIAL CODE A



DETAIL 3
.093/(2.36) STANDARD MOUNTING EAR
(SCALE 4:1)



HOUSING	DIM. "A"	DIM. "B"	DIM. "C"
PLUG	1.131/(28.73)	.375/(9.52)	.36/(9.1)
RECEPTACLE	1.038/(26.36)	.312/(7.92)	.37/(9.4)



DETAIL 4
.093/(2.36) PREBENT MOUNTING EAR
(SCALE 4:1)

NOTES:

- MATERIAL CODES:
A = NYLON 6/6, 94V-2
- THIS PART COMPLIES WITH MOLEX PRODUCT SPEC. 02-09.
- FOR DIMENSION SEE SHEET 1 AND 2.
- CIRCUIT I.D. NUMBERS ON HOUSING APPEAR ON PARTS FROM TOOLS BUILT AFTER 8/7/91.

DIMENSIONS SHOWN METRIC (INCH)		UNLESS OTHERWISE SPECIFIED TOLERANCES ANGULAR ± .04° TO		▽ = 0 ▼ = 0		REVISE ONLY ON CAD SYSTEM	
INCH		METRIC		TITLE		.093/(2.36) HOUSINGS, PLUG AND RECEPTACLE, 4 CKT. ± .198/(5.03) CTRS.	
3 PLACE	± .010	---	---	PART NO.		MOLEX INCORPORATED	
2 PLACE	± .014	± 0.25	---	L15LEJLL		60532 U.S.A.	
1 PLACE	---	± 0.35	---	SHEET NO.		3	
DRAFT WHERE APPLICABLE MUST REMAIN WITHIN DIMENSIONS				DATE		3/10/88	
DRAWN BY: CEP				CHKD. BY: RW		DRWG. NO.	
APP'D. BY: RAS				SCALE: 2 : 1		SD-I490-*	
LTR. REVISIONS		LTR. REVISIONS		FILE NAME		DIV. SIZE	
				SD I490X3		CP C	
				DIN			