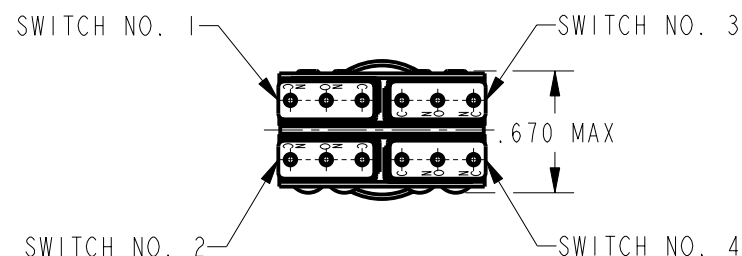
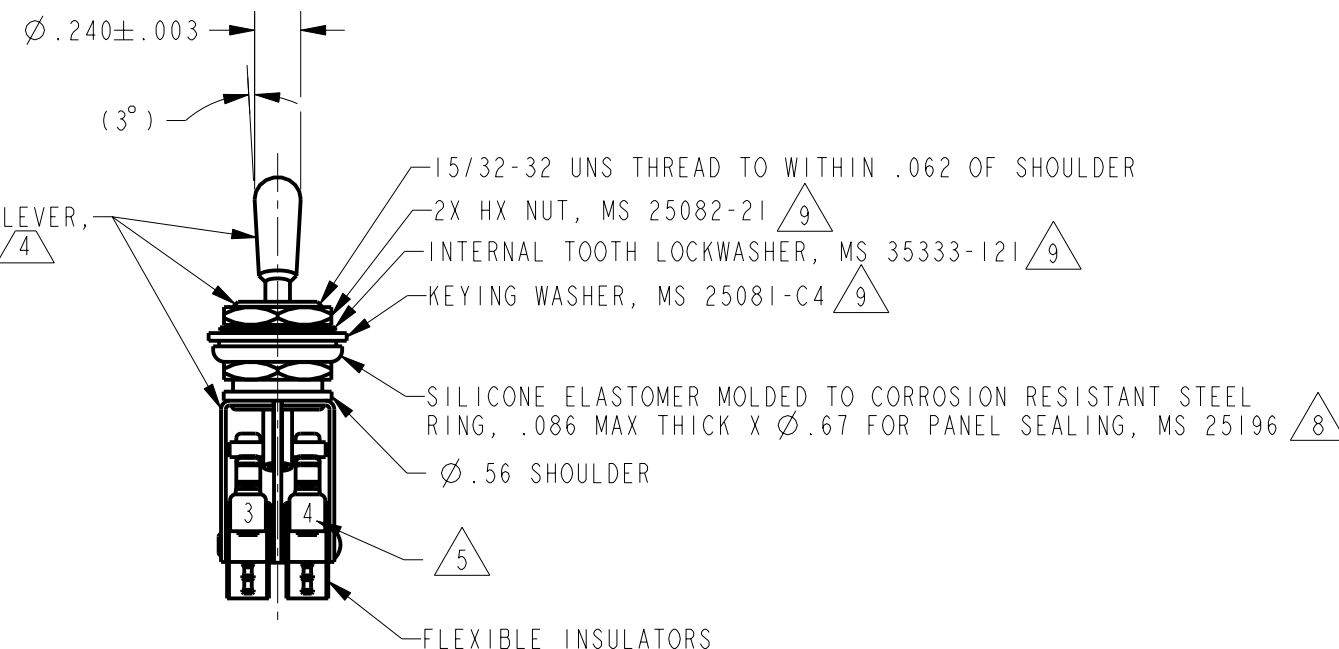
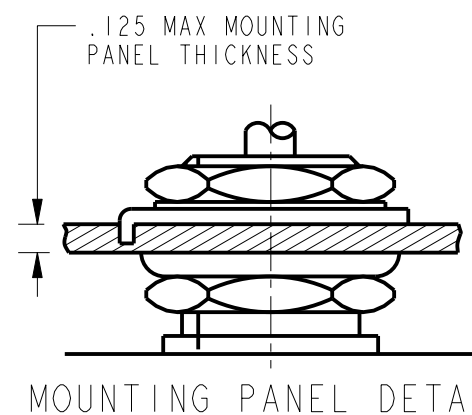
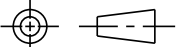


CATALOG LISTING	KEYWAY POSITION		CENTER POSITION		OPPOSITE KEY-WAY POSITION	
	C-NC	C-N0	C-NO	C-NC	C-NC	C-N0
64AT303-1	1,2	3,4	NONE	ALL	3,4	1,2
64AT303-3	1,2	3,4	NONE	NONE	3,4	1,2
64AT303-5	1,2 ‡	3,4 ‡	NONE	ALL	3,4	1,2
64AT303-7	1,2 ‡	3,4 ‡	NONE	ALL	3,4 ‡	1,2 ‡
* ASTERIK DENOTES MOMENTARY POSITION						



- NOTES
- 1 - UNIT INCLUDES 4X "SX" TYPE, BASIC SWITCHES (MEETS REQUIREMENTS OF MIL-S-8805/4)
 - 2 - SWITCHES DO NOT NECESSARILY OPERATE SIMULTANEOUSLY
 - 3 - TERMINALS ARE PLATED FOR SOLDERING
 - 4 - DULL FINISH ON LEVER AND BUSHING
 - 5 - SWITCH NUMBERS MARKED ON END OF BASIC SWITCHES
 - 6 - TERMINAL DESIGNATION STAMPED ON BOTH SIDES OF UNIT
 - 7 - WHEN LEVER IS MOVED OUT OF A MAINTAINED POSITION, IT WILL RETURN OF ITS OWN ACCORD TO THE ORIGINAL POSITION OR THE ADJACENT POSITION. THE TOGGLE LEVER MAY HANG UP BETWEEN THE TWO ADJACENT POSITIONS ONLY BY EXERTING CONSIDERABLE FORCE
 - 8 - FOR PANEL SEAL TO BE EFFECTIVE, MOUNTING HOLE IN PANEL SHOULD}} NOT EXCEED $\varnothing .500$
 - 9 - HARDWARE FURNISHED ASSEMBLED WITH SWITCH OR IN PACKET PER MIL-PRF-8805
 - 10 - REPLACEMENT MOUNTING HARDWARE PACKET 15PA314-AT



THIS DRAWING COVERS A PROPRIETARY ITEM AND IS THE PROPERTY OF MICRO SWITCH. A DIVISION OF HONEYWELL. THIS DRAWING IS NOT TO BE COPIED OR USED WITHOUT THE APPROVAL OF MICRO SWITCH				THIRD ANGLE PROJECTION 	
CHARACTERISTICS		ELECTRICAL DATA		SCALE FULL	
OPERATING FORCE		CONTACT ARRANGEMENT 4X S P D T		DO NOT SCALE PRINT	
FORCE TO MOVE LEVER FROM ONE POSITION TO ANY ADJACENT POSITION 1-5 LB APPLIED .125±.030 BELOW TOP OF LEVER		ELECTRICAL RATINGS		UNLESS OTHERWISE SPECIFIED TOLERANCES ARE	
		LOAD	SEA LEVEL		50,000 FT
			28 Vdc	115 Vac, 60 Hz	28 Vdc
			(AMPS)	(AMPS)	(AMPS)
			7	7	4
			4	7	2.5
RESISTIVE				ONE PLACE (.0) ±.030	
INDUCTIVE				TWO PLACE (.00) ±.015	
				THREE PLACE (.000) ±.005	
				ANGLES ±	
				WEIGHT .07 LB EST	

ANSI Y14.5M-1982 APPLIES

Mouser Electronics

Authorized Distributor

Click to View Pricing, Inventory, Delivery & Lifecycle Information:

[Honeywell:](#)

[64AT303-3](#) [64AT303-7](#)