

**PLEASE CHECK WWW.MOLEX.COM FOR LATEST PART INFORMATION**

**Part Number:** [0780362005](#)  
**Status:** **Active**  
**Overview:**  
**Description:** Projector Lamp Receptacle Terminal, 0.90µm (35.4µ") Tin (Sn) Plated, Straight Wing Type, Lead free

**Documents:**

[Drawing \(PDF\)](#) [RoHS Certificate of Compliance \(PDF\)](#)

**General**

Product Family	Crimp Terminals
Series	78036
Comments	Without Insulation Crimp
Current - Maximum	10A
Overview	Projector Lamp Connector
Product Name	DLP*
Voltage - Maximum	250V AC (RMS)

**Physical**

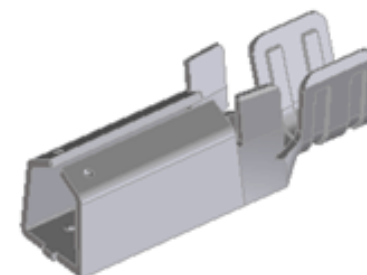
Durability (mating cycles max)	250
Gender	Female
Material - Metal	Copper Alloy
Material - Plating Mating	Tin
Material - Plating Termination	Nickel
Packaging Type	Reel
Plating min: Mating (µin)	36
Plating min: Mating (µm)	0.90
Plating min: Termination (µin)	20
Plating min: Termination (µm)	0.50
Termination Interface: Style	Crimp or Compression
Wire Insulation Diameter	2.06-3.85mm (.081-.152")
Wire Size AWG	18
Wire Size AWG	20
Wire Size AWG	22
Wire Size mm <sup>2</sup>	N/A

**Material Info**

**Reference - Drawing Numbers**

Sales Drawing [SD-78036-003](#)

\* DLP is a registered trademark of Texas Instruments Incorporated



Series image - Reference only

**EU RoHS**

**ELV and RoHS Compliant**  
**REACH SVHC Contains SVHC: No**  
**Halogen-Free Status**

**China RoHS**



**Halogen-Free**

**Need more information on product environmental compliance?**

Email [productcompliance@molex.com](mailto:productcompliance@molex.com)  
Please visit the [Contact Us](#) section for any non-product compliance questions.

**Search Parts in this Series**

[78036 Series](#)

**Mates With**

[78037-2005 Straight Wing Plug Terminal](#)

**Use With**

[781651001 Crimp Housing](#)

**Application Tooling | FAQ**

*Tooling specifications and manuals are found by selecting the products below. Crimp Height Specifications are then contained in the Application Tooling Specification document.*

**Global**

Description	Product #
Hand Crimp Tool For Projector Lamp Plug and Receptacle Terminal	<a href="#">0638199600</a>
FineAdjust™ Applicator for Sabre™ Flat Blade Crimp Terminal, 18-22 AWG	<a href="#">0639014100</a>

T2 Terminator for 0639114100  
Projector Lamp Plug  
and Receptacle  
Terminal, 18-20  
AWG

This document was generated on 11/20/2009

**PLEASE CHECK [WWW.MOLEX.COM](http://WWW.MOLEX.COM) FOR LATEST PART INFORMATION**