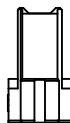
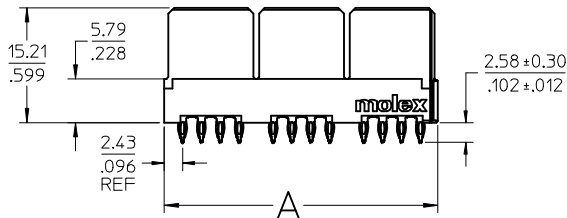
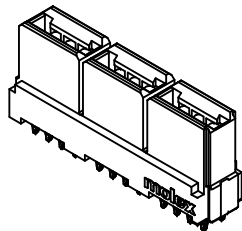
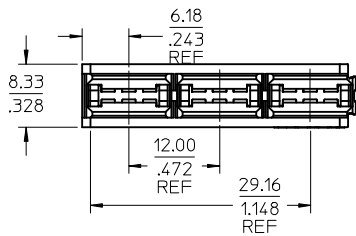


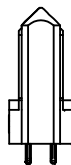
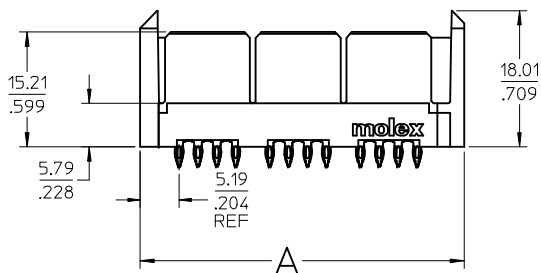
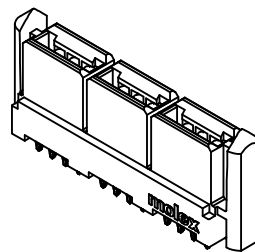
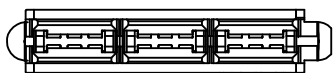
P/N 46112-601 SHOWN



NOTES:

1. MATERIAL: HOUSING: LCP, 94-V0, COLOR: BLACK.
POWER CONTACTS: COPPER ALLOY.
SIGNAL CONTACTS: MODIFIED TIN BRASS.
2. FINISH: SELECT GOLD - 0.75 μM/30 μ INCHES
SELECTED TIN - 1.91 μM/75 μ INCHES
OR SELECTED TIN-LEAD - 1.91 μM/75 μ INCHES
BOTH OVER NICKEL - 1.25 μM/50 μ INCHES
3. POWER CONTACTS ARE LUBRICATED IN CONTACT AREA.
4. PARTS ARE RoHS COMPLIANT.
5. MATES TO MOLEX P/N 45985-SERIES OR EDGE CARD 1.57/.062.
6. PRODUCT SPECIFICATION PS-46114-001.
7. PACKAGING: PER PK-46114-003.

P/N 46112-603 SHOWN



POWER HOUSING ASSY W/ INTERLOCK

NO OF CKT	MATERIAL NUMBER	COMPLIANT PIN PLATING	DIM A	DIM B SEE SHT 2	DIM C SEE SHT 2
2	46112-0201	TIN	12.24/1.482	12.75/1.502	2.69/1.106
	46112-0205	TIN-LEAD			
4	46112-0401	TIN	24.24/1.954	24.74/1.974	
	46112-0405	TIN-LEAD			
6	46112-0601	TIN	36.24/1.427	36.75/1.447	
	46112-0605	TIN-LEAD			
8	46112-0801	TIN	48.24/1.899	48.74/1.919	
	46112-0805	TIN-LEAD			
10	46112-1001	TIN	60.24/2.372	60.76/2.392	
	46112-1005	TIN-LEAD			
12	46112-1201	TIN	75.00/2.953	75.51/2.973	
	46112-1205	TIN-LEAD			
14	46112-1401	TIN	84.24/3.317	84.76/3.337	
	46112-1405	TIN-LEAD			

POWER HOUSING ASSY WITH (2) GUIDES

NO OF CKT	MATERIAL NUMBER	COMPLIANT PIN PLATING	DIM A	DIM B	DIM C
2	46112-0203	TIN	18.94/1.746	19.46/1.766	5.45/1.215
	46112-0206	TIN-LEAD			
4	46112-0403	TIN	30.94/1.218	31.45/1.238	
	46112-0406	TIN-LEAD			
6	46112-0603	TIN	42.94/1.691	43.46/1.711	
	46112-0606	TIN-LEAD			
8	46112-0803	TIN	54.94/2.163	55.45/2.183	
	46112-0806	TIN-LEAD			
10	46112-1003	TIN	66.94/2.635	67.44/2.655	
	46112-1006	TIN-LEAD			
12	46112-1203	TIN	78.94/3.108	79.45/3.128	
	46112-1206	TIN-LEAD			
14	46112-1403	TIN	90.94/3.580	91.44/3.600	
	46112-1406	TIN-LEAD			

TOLERANCE CHANGE	DESCRIPTION
EC NO: UCP2012-2701	
DRWN:KARAD/MS 2012/06/22	
CHKD:	
APPR:APATEL 2012/07/30	
REV	
C4	

GENERAL TOLERANCES (UNLESS SPECIFIED)	
mm	INCH
4 PLACES ± .010	± .0004
3 PLACES ± .010	± .0004
2 PLACES ± 0.25	± .010
1 PLACE ± .010	± .0004
ANGULAR ± 1/2°	
DRAFT WHERE APPLICABLE MUST REMAIN WITHIN DIMENSIONS	

DIMENSION STYLE	
IN/MM	
DRAWN BY	DATE
CHECKED BY	DATE
APPROVED BY	DATE
JCOMERC1	2009/12/03
MATERIAL NO.	
SEE CHART	
DOCUMENT NO.	
SD-46112-200	

SCALE	DESIGN UNITS	THIRD ANGLE PROJECTION
2:1	INCH	
LPH VERTICAL RECEPTACLE POWER ASSEMBLY 2 CKT-14 CKT, PRESS-FIT (C3)		
MOLEX INCORPORATED		
MATERIAL NO.	DOCUMENT NO.	SHEET NO.
		1 OF 2
THIS DRAWING CONTAINS INFORMATION THAT IS PROPRIETARY TO MOLEX INCORPORATED AND SHOULD NOT BE USED WITHOUT WRITTEN PERMISSION		

