

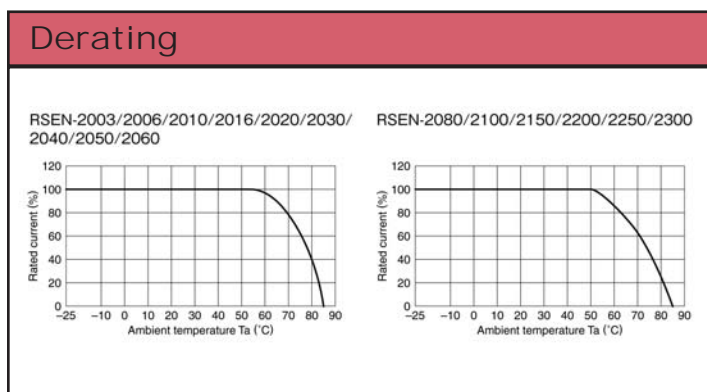
3A to 300A, 250VAC EMI Filters

Features

- ◆ Lower Cost (Than RSHN Series)
- ◆ DIN Rail Mount Option (Up 30A)
- ◆ Low Earth Leakage Current Option (Up to 30A)
- ◆ Conforms to UL, CSA and EN Safety Agency Certifications



| Specifications | | | | | | |
|------------------------------|----|--|---------------------------------------|---------------------------------------|---------------------------------------|---------------------------------------|
| Model | | RSEN-2003 RSEN-2003D RSEN-2003L | RSEN-2006 RSEN-2006D RSEN-2006L | RSEN-2010 RSEN-2010D RSEN-2010L | RSEN-2016 RSEN-2016D RSEN-2016L | RSEN-2020 RSEN-2020D RSEN-2020L |
| Rated Voltage (AC, DC) | V | 250V | | | | |
| Rated Current | A | 3A | 6A | 10A | 16A | 20A |
| DC Resistance (total) | mΩ | 250 | 110 | 40 | 20 | 10 |
| Model | | RSEN-2030 RSEN-2030D RSEN-2030L | RSEN-2040 | RSEN-2050 | RSEN-2060 | RSEN-2080 |
| Rated Voltage (AC, DC) | V | 250V | | | | |
| Rated Current | A | 30A | 40A | 50A | 60A | 80A |
| DC Resistance (total) | mΩ | 6 | 6 | 4 | 3 | 3.4 |
| Model | | RSEN-2100 | RSEN-2150 | RSEN-2200 | RSEN-2250 | RSEN-2300 |
| Rated Voltage (AC, DC) | V | 250V | | | | |
| Rated Current | A | 100A | 150A | 200A | 250A | 300A |
| DC Resistance (total) | mΩ | 2.7 | 2 | 1.4 | 1 | 0.7 |
| Withstand Voltage | V | Terminals to Case: 2500VAC (1 Minute) | | | | |
| Isolation Resistance | MΩ | 100MΩ minimum (500VDC, 1 Minute) | | | | |
| Leakage Current (max) | A | RSEN-20xx 1mA; RSEN20xxL 10uA (250VAC, 60Hz) | | | | |
| Operating Temperature | °C | -25 to +85°C (Derate above 50 / 55°C, see derating curve) | | | | |
| Storage Temperature | °C | -25 to +85°C | | | | |
| Safety Agency Certifications | - | UL1283, CSA C22.2 No.8, EN60939 | | | | |
| Weight | g | 170g to 8400g model dependant (See weights chart on website) | | | | |
| Warranty | yr | 1 Year | | | | |

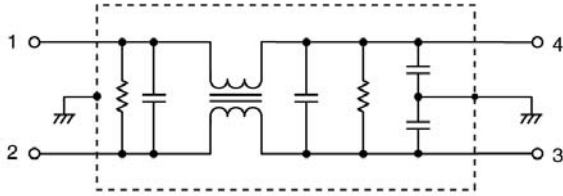


Options

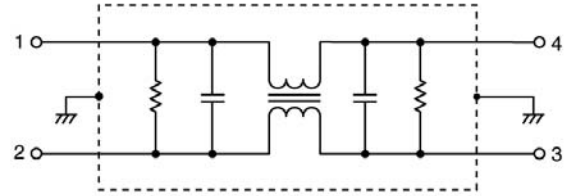
| | |
|---|------------|
| Chassis Mount & Standard Leakage Current | RSEN-20xx |
| DIN Rail Mount & Standard Leakage Current | RSEN-20xxD |
| Chassis Mount & Low Leakage Current | RSEN-20xxL |

Circuit

RSEN-2 ***
RSEN-2 *** D

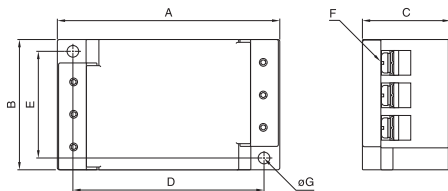


RSEN-2 *** L

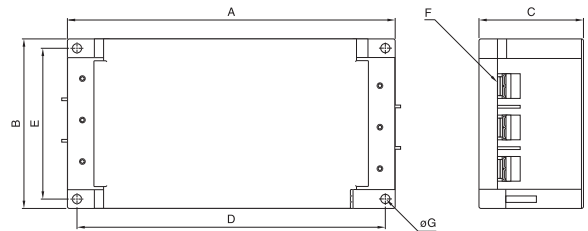


Outline Drawing

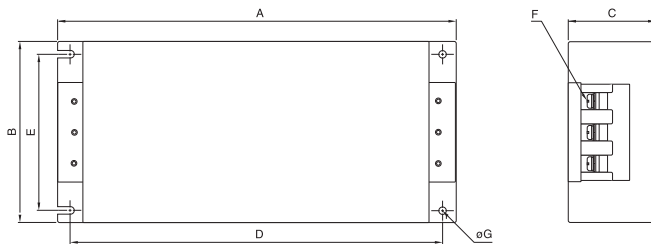
RSEN-2003/2006/2010/2016/2020/2030



RSEN-2040/2050/2060



RSEN-2080/2100/2150/2200/2250/2300



Dimensions in mm

| Part No. | A | B | C | D | E | F | G | Recommended clamping torque |
|-----------|-----|-----|-----|-----|-----|-----|-----|-----------------------------|
| RSEN-2003 | 87 | 52 | 35 | 75 | 43 | M4 | 4.5 | 1.27N m |
| RSEN-2006 | | | | | | | | |
| RSEN-2010 | | | | | | | | |
| RSEN-2016 | | | | | | | | |
| RSEN-2020 | | | | | | | | |
| RSEN-2030 | 170 | 90 | 54 | 160 | 80 | M5 | 4.5 | 2.5N m |
| RSEN-2040 | | | | | | | | |
| RSEN-2050 | | | | | | | | |
| RSEN-2060 | 267 | 161 | 85 | 247 | 135 | M8 | 6.5 | 7.64N m |
| RSEN-2080 | | | | | | | | |
| RSEN-2100 | | | | | | | | |
| RSEN-2150 | | | | | | | | |
| RSEN-2200 | | | | | | | | |
| RSEN-2250 | 395 | 195 | 100 | 375 | 169 | M10 | 6.5 | 11.8N m |
| RSEN-2300 | | | | | | | | |

For Additional Information, please visit
us.tdk-lambda.com/lp/products/r-series.htm



Mouser Electronics

Authorized Distributor

Click to View Pricing, Inventory, Delivery & Lifecycle Information:

[TDK-Lambda:](#)

[RSEN-2003](#) [RSEN-2003D](#) [RSEN-2003L](#) [RSEN-2003LD](#) [RSEN-2006](#) [RSEN-2006D](#) [RSEN-2006L](#) [RSEN-2006LD](#)
[RSEN-2010D](#) [RSEN-2010L](#) [RSEN-2010LD](#) [RSEN-2016](#) [RSEN-2016D](#) [RSEN-2016L](#) [RSEN-2020](#) [RSEN-2020D](#)
[RSEN-2020L](#) [RSEN-2020LD](#) [RSEN-2030](#) [RSEN-2030D](#) [RSEN-2030L](#) [RSEN-2030LD](#) [RSEN-2040](#) [RSEN-2050](#)
[RSEN-2060](#) [RSEN-2080](#) [RSEN-2100](#) [RSEN-2150](#) [RSEN-2200](#) [RSEN-2250](#) [RSEN-2300](#) [RSEN-2010](#) [RSEN-2016LD](#)