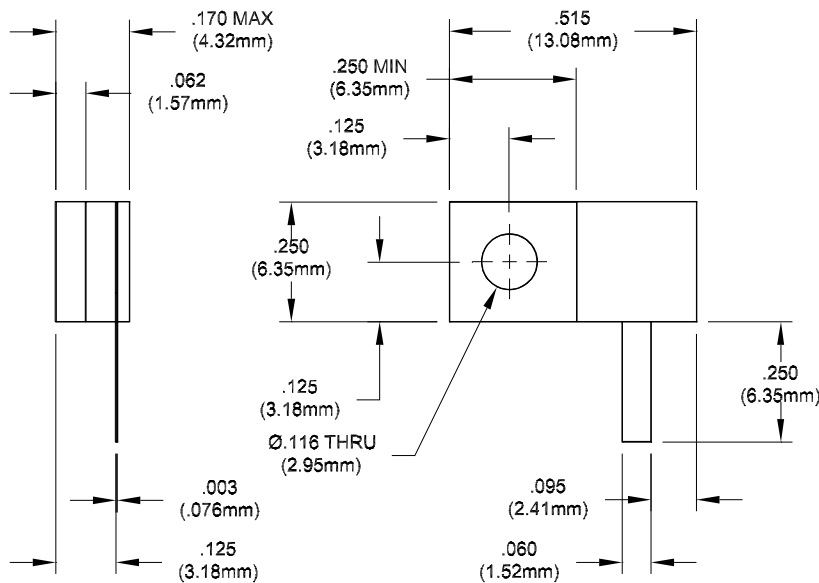
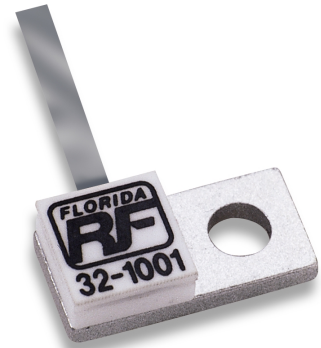


# HIGH POWER FLANGE MOUNT BERYLLIUM OXIDE TERMINATIONS

**20 Watts    Part No. 32-1001**  
**Termination, Flange Mount**



## PERFORMANCE SPECIFICATIONS

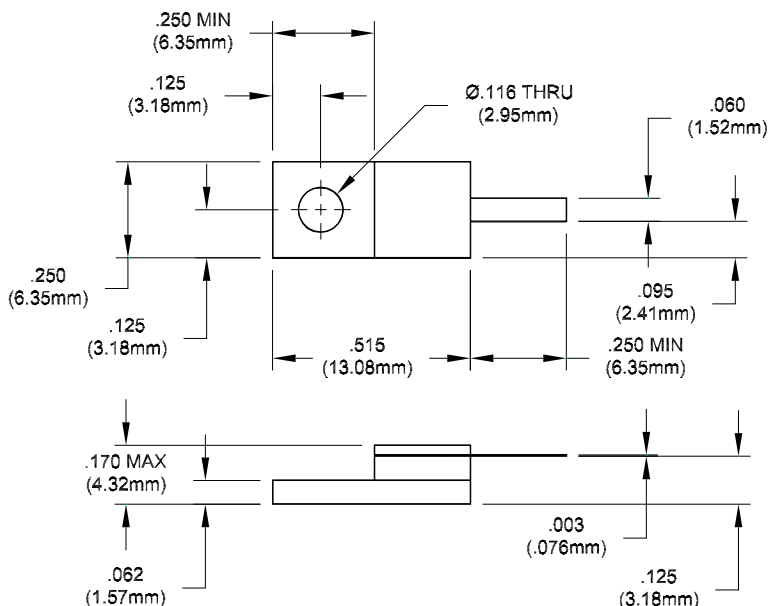
**20 Watts**

**Part No. 32-1001**

Frequency: DC to 2.0 GHz

VSWR (Max): 1.20:1 DC - 1.0  
1.35:1 1.0 - 2.0

**20 Watts    Part No. 32-1014**  
**Termination, Flange Mount**



## PERFORMANCE SPECIFICATIONS

**20 Watts**

**Part No. 32-1014**

Frequency: DC to 2.0 GHz

VSWR (Max): 1.20:1 DC - 1.0  
1.35:1 1.0 - 2.0