

**PLEASE CHECK WWW.MOLEX.COM FOR LATEST PART INFORMATION**

**Part Number:** [0002081202](#)  
**Status:** **Active**  
**Overview:** [disk drive power connector](#)  
**Description:** Disk Drive Power Connection System, Female Crimp Terminal, Bag, Phosphor Bronze, 14-20 AWG

**Documents:**

[Drawing \(PDF\)](#) [RoHS Certificate of Compliance \(PDF\)](#)  
[Product Specification PS-8981-4M\\*/4P\\* \(PDF\)](#)

**General**

Product Family	Crimp Terminals
Series	<a href="#">8980</a>
Crimp Quality Equipment	Yes
MolexKits	Yes
Overview	<a href="#">disk drive power connector</a>
Product Name	Disk Drive Power

**Physical**

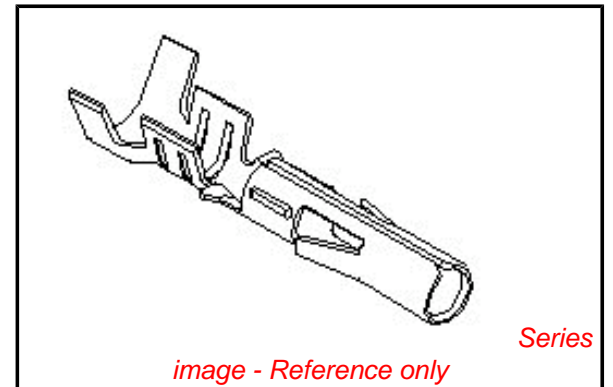
Durability (mating cycles max)	50
Gender	Female
Material - Metal	Phosphor Bronze
Material - Plating Mating	Tin
Material - Plating Termination	Tin
Packaging Type	Bag
Plating min: Mating (µin)	35
Plating min: Mating (µm)	0.89
Plating min: Termination (µin)	35
Plating min: Termination (µm)	0.89
Termination Interface: Style	Crimp or Compression
Wire Insulation Diameter	2.03-2.74mm (.080-.108")
Wire Size AWG	14, 16, 18, 20
Wire Size mm <sup>2</sup>	N/A

**Material Info**

Old Part Number 8980-3L

**Reference - Drawing Numbers**

Product Specification	PS-8981-4M*/4P*
Sales Drawing	SD-8980-3*



*image - Reference only*

**EU RoHS**

**ELV and RoHS Compliant**  
**REACH SVHC Contains SVHC: No**  
**Halogen-Free Status**

**China RoHS**



**Need more information on product environmental compliance?**

Email [productcompliance@molex.com](mailto:productcompliance@molex.com)  
 For a multiple part number RoHS Certificate of Compliance, [click here](#)

Please visit the [Contact Us](#) section for any non-product compliance questions.

**Search Parts in this Series**

[8980Series](#)

**Use With**

[8981P](#)

**Application Tooling | FAQ**

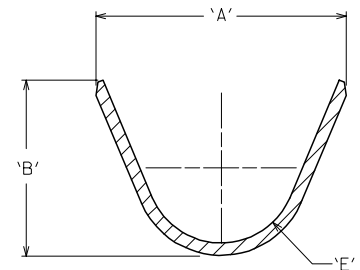
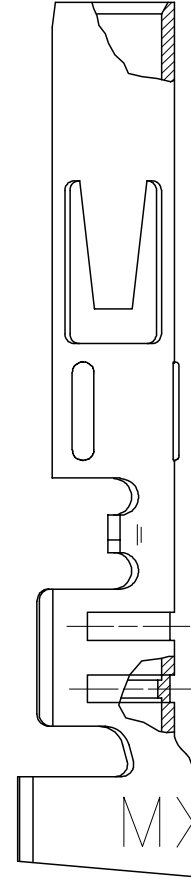
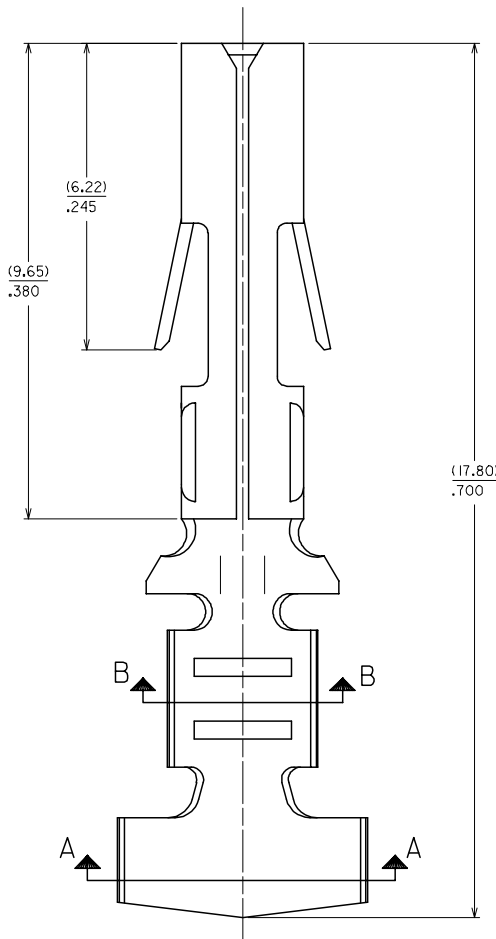
*Tooling specifications and manuals are found by selecting the products below. Crimp Height Specifications are then contained in the Application Tooling Specification document.*

**Global**

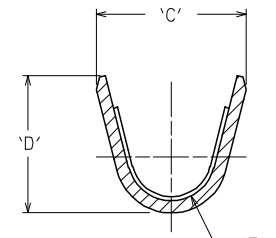
Description	Product #
Extraction Tool	<a href="#">0011030037</a>
Terminator Die	<a href="#">0011402274</a>
Terminator Die	<a href="#">0011402275</a>
Terminator Die	<a href="#">0011402282</a>
Hand Crimp Tool	<a href="#">0638117000</a>

EDP NO.	ENG NO.	FORM	'A'	'B'	'C'	'D'	'E'	'F'
02-08-1201	8980-3C	CHAIN,14-20 AWG WIRE	(4.44)	(3.39)	(3.02)	(3.61)	(1.23)	(0.61)
02-08-1202	8980-3L	LOOSE,14-20 AWG WIRE	.175	.133	.119	.142	.048	.024

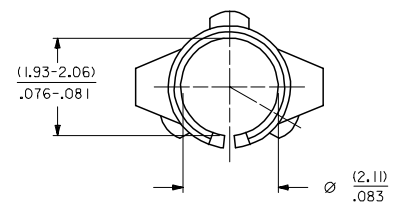
- NOTES:  
 1. FINISH: (.00089)/.000035 MN. TIN OVER  
 (.00051)/.000020 MIN COPPER (COPPER PLATE REFLOWED)  
 2. MATERIAL: (.025)/.010 THK PHOS  
 BRONZE, ALLOY CA 51000.



SECTION A-A



SECTION B-B



OBS060702	EC NO: S2007-0797	2007/03/30
	DRWN:GEMARLY	2007/04/03
	CHKD:SKANG	2007/04/03
	APPR:MLONG	2007/04/03
REV	DESCRIPTION	

QUALITY SYMBOLS $\nabla=0$ $\triangle=0$	GENERAL TOLERANCES (UNLESS SPECIFIED)	DIMENSION STYLE MM/IN	SCALE NTS	DESIGN UNITS METRIC	THIRD ANGLE PROJECTION
	4 PLACES ± --- ± --- 3 PLACES ± --- ± .010 2 PLACES ± 0.25 ± --- 1 PLACE ± --- ± --- ANGULAR ± 1 °	DRAWN BY TAY DATE 1987/12/15 CHECKED BY AT DATE 1987/12/15 APPROVED BY AB DATE 1987/12/15	TITLE TERMINAL SOCKET DIA. (2.096)/.0825		
DRAFT WHERE APPLICABLE MUST REMAIN WITHIN DIMENSIONS	SEE TABLE	MATERIAL NO.	DOCUMENT NO.	SHEET NO.	
				1 OF 1	