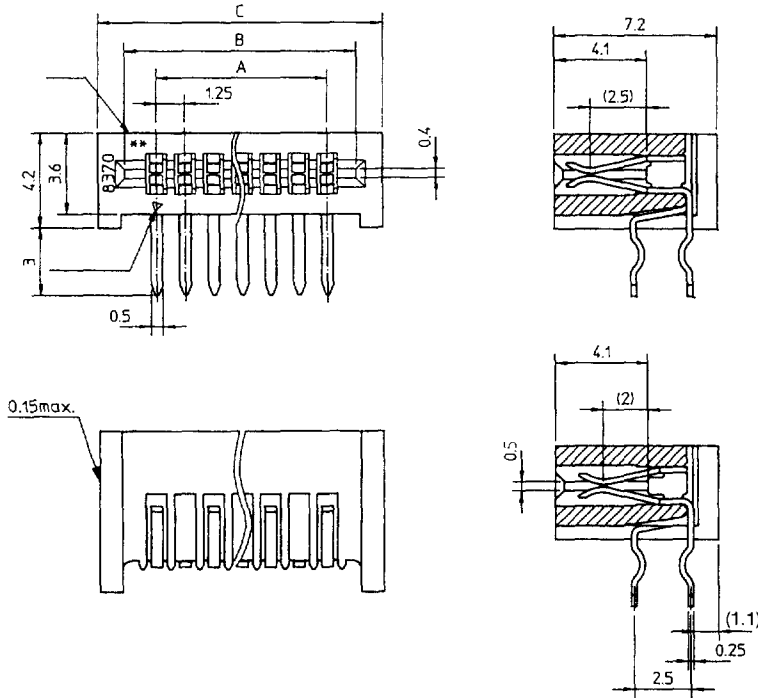


# 1.25mm Pitch

## Series 8370

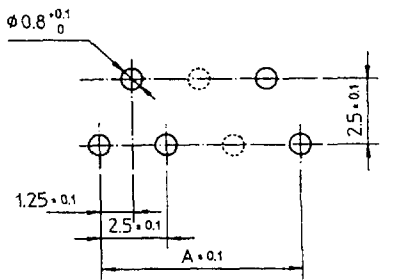


### LIF Right Angle Through-Hole (Dual Sided Contact)

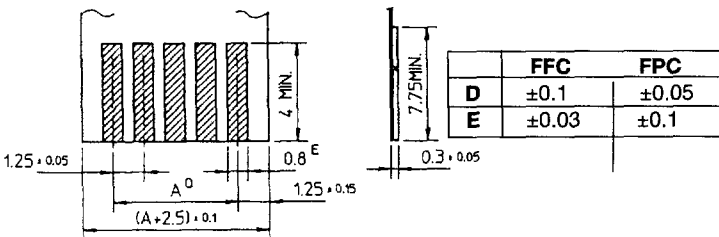


#### Specifications

- Number of Contacts – 4-30
- Tray Packaged or Tube
- Voltage – 125 V
- Current Rating – 1.0 amp max.
- Dielectric Withstanding Voltage – 500V RMS min.
- Operating Temperature – (-40°C - +85°C)
- Contact Material – phosphor bronze (tin-lead plated)
- Insulator Material – glass-filled PBT, (UL 94 V-O) black color
- FFC/FPC Thickness – 0.3 ±0.05 mm (0.012 ±0.002")
- PCB Thickness – 1.0 - 1.6mm (0.039-0.633")
- Profile Height – Straight – 7.2mm (0.276")  
Right Angle – 4.2mm (0.165")



MOUNTING LAYOUT (t=1~1.6mm)



FFC, FPC SPECIFICATION

#### ORDERING CODE

00 8370 XX7 00X 800

- NUMBER OF CONTACTS (04-30)
- 0=TRAY PACKAGE
  - 1=TUBE PACKAGE
  - 0=KINKED LEGS (Preferred option)
  - 1=NON-KINKED LEGS

PART NUMBER	NO. OF CONTACTS	A	B	C	QTY. PER TUBE	QTY. PER TRAY
00 8370 047 XOX 800	4	3.75	6.41	8.75	55	410
057	5	5.00	7.66	10.00	48	350
067	6	6.25	8.91	11.25	43	320
077	7	7.50	10.16	12.50	38	280
087	8	8.75	11.41	13.75	35	260
097	9	10.00	12.66	15.00	32	240
107	10	11.25	13.91	16.25	29	220
117	11	12.50	15.16	17.50	27	200
127	12	13.75	16.41	18.75	25	190
137	13	15.00	17.66	20.00	24	180
147	14	16.25	18.91	21.25	22	170
157	15	17.50	20.16	22.50	21	160
167	16	18.75	21.41	23.75	20	150
177	17	20.00	22.66	25.00	19	140
187	18	21.25	23.91	26.25	18	130
197	19	22.50	25.16	27.50	17	120
207	20	23.75	26.41	28.75	16	120
217	21	25.00	27.66	30.00	16	110
227	22	26.25	28.91	31.25	15	110
237	23	27.50	30.16	32.50	14	100
247	24	28.75	31.41	33.75	14	100
257	25	30.00	32.66	35.00	13	100
267	26	31.25	33.91	36.25	13	90
277	27	32.50	35.16	37.50	12	90
287	28	33.75	36.41	38.75	12	90
297	29	35.00	37.66	40.00	12	80
00 8370 307 XOX 800	30	36.25	38.91	41.25	11	80

(Dimensions: mm)