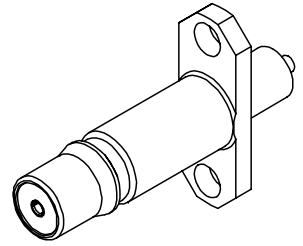
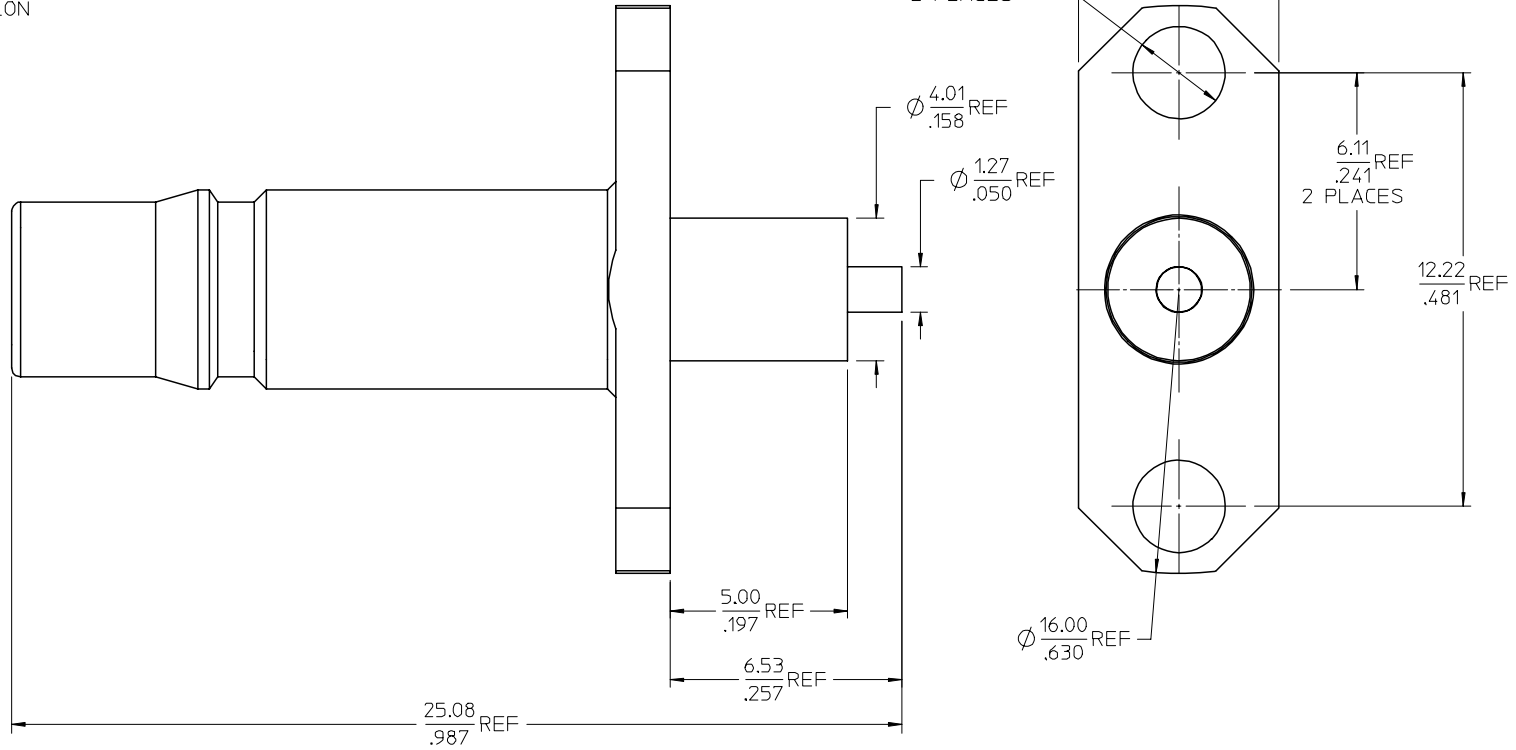


MATERIALS AND FINISHES

BODY BRASS
PLATED GOLD

CENTER CONTACT BERYLLIUM COPPER
PLATED GOLD

INSULATOR TEFLON



PART # 73254-0210

PS-89675-1330

QMA

SPECIFICATION

DESCRIPTION

CHG: UPDATED VIEW
OF REVISED BODY.
EC NO: URF2008-0013
DRAWN: ARROBERTSON 2007/07/17
CHKD: 2007/07/17
APPR: JIM ENEER 2007/07/17
REV DESCRIPTION
A1

QUALITY
SYMBOLS
=0
=0

| GENERAL TOLERANCES (UNLESS SPECIFIED) | |
|--|---------|
| mm | INCH |
| 4 PLACES ± .005 | ± .0005 |
| 3 PLACES ± .003 | ± .0003 |
| 2 PLACES ± .002 | ± .0002 |
| 1 PLACE ± .001 | ± .0001 |
| ANGULAR ± 2 ° | |

DRAFT WHERE APPLICABLE
MUST REMAIN
WITHIN DIMENSIONS

| DIMENSION STYLE MM/IN | |
|--------------------------|------------|
| DRAWN BY | DATE |
| JM | 2004/10/13 |
| CHECKED BY | DATE |
| JM | 2004/10/13 |
| APPROVED BY | DATE |
| JDW | 2004/10/13 |

| SCALE | DESIGN UNITS METRIC | THIRD ANGLE PROJECTION |
|-------|------------------------|---------------------------|
| | | |

TITLE
QMA JACK, STRAIGHT
2 HOLE FLANGE RECEPTACLE
EWR-2616, QMA-JR

MATERIAL NO. 732540210
DOCUMENT NO. SD-73254-021
SHEET NO. 1 OF 1

THIS DRAWING CONTAINS INFORMATION THAT IS PROPRIETARY TO MOLEX
INCORPORATED AND SHOULD NOT BE USED WITHOUT WRITTEN PERMISSION