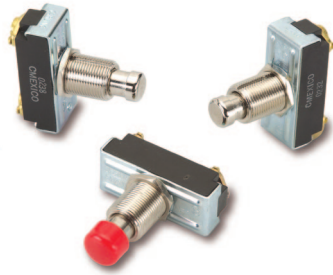
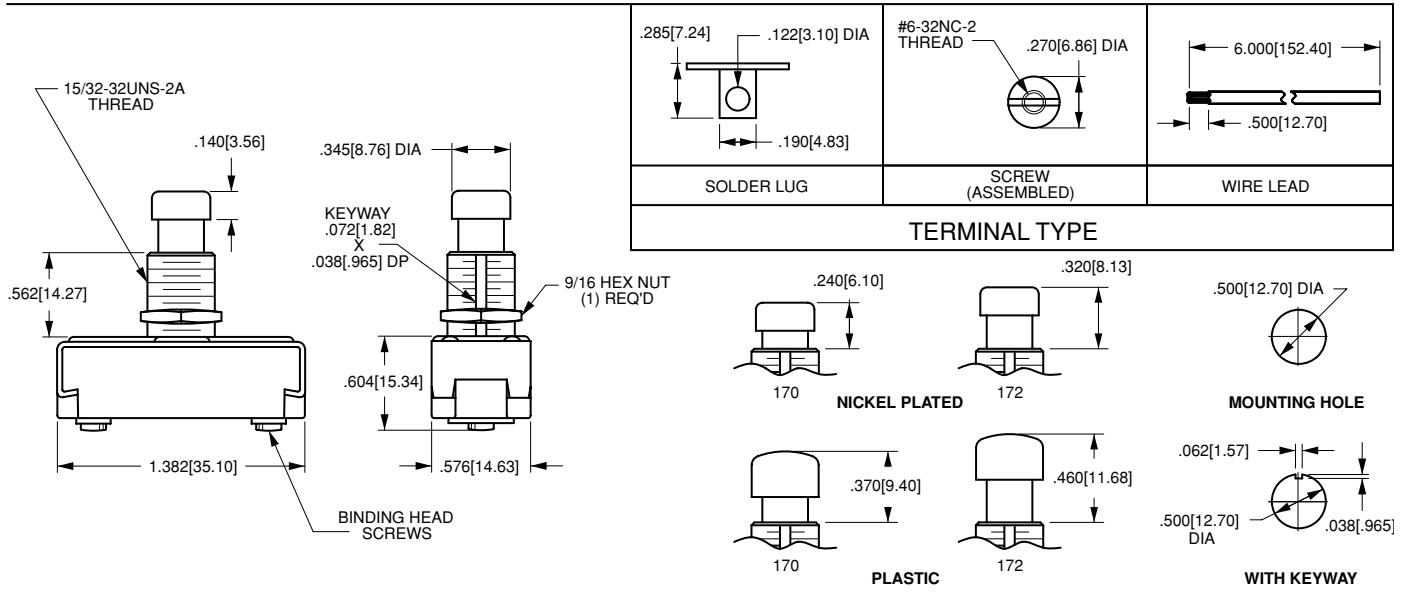


170/172-Series Pushbutton Switches



The 170/172-Series pushbutton switches are single pole, high amperage switches suitable for shallow back panel applications. These switches are momentary action and require an actuation force of 2.5 lbs. The 170/172-Series switches are equipped with a slow-make, slow-break contact mechanism and are rated at 15 amps at 125VAC.

Dielectric Strength
UL/CSA: 1000V - live to dead metal parts
Electrical Life
25,000 cycles- momentary
Mechanical Life
100,000 cycles
Operating Temperature
32°F to 185°F (0°C to +85°C)



172 - **CBL**

¹ Base Part Number ² Cap Style/Color

1 BASE PART NUMBER: SERIES/POLES/CIRCUITRY/RATING/TERMINATION			
<i>Single Pole</i> 10A 250VAC; 15A 125VAC	solder lugs	wire leads	screw terminals
ON-(OFF) ²	170-B	170-A	170
OFF-(ON) ²	172-B	172-A	172

2 CAP STYLE/COLOR¹	
CBL	black plastic
CGN	green plastic
CRD	red plastic
CWH	white plastic

NOTES
1 When selection 2 is left blank, a standard nickel plated plunger is supplied.
() Indicates momentary function.

Mouser Electronics

Authorized Distributor

Click to View Pricing, Inventory, Delivery & Lifecycle Information:

[Carling Technologies:](#)

[172](#) [170](#)