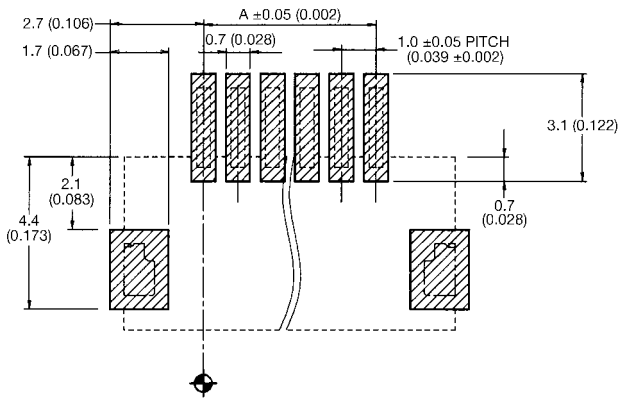
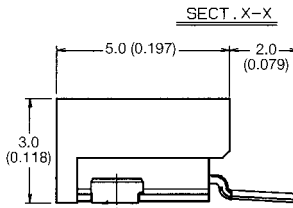
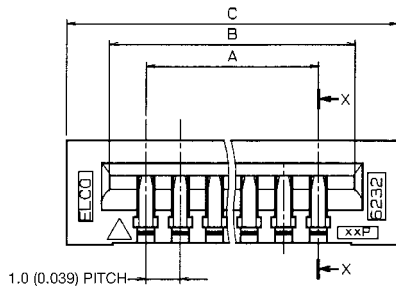
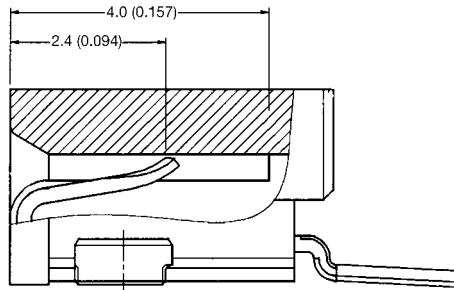
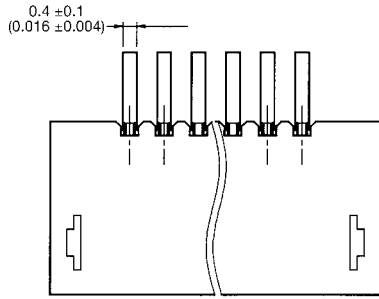
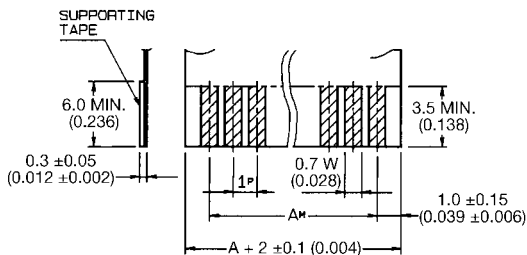


1.00mm Pitch

Series 6232 - LIF Right Angle SMT (Bottom Contact Type)



MOUNTING LAYOUT (CONN. MOUNTING SIDE)



FFC/FPC
APPLICABLE FFC/FPC

Tolerance			
Kind	P	W	M
FFC	±0.05	±0.03	±0.1
FPC	±0.02	+0.1 -0.05	±0.05

No. of Contacts	Assembly Number				
	A	B	C		
03	04 6232 103 102 800	2.0 (0.079)	4.1 (0.161)	6.6 (0.260)	
04	↑ 104 ↑	3.0 (0.118)	5.1 (0.201)	7.6 (0.299)	
05	105	4.0 (0.157)	6.1 (0.240)	8.6 (0.339)	
06	106	5.0 (0.197)	7.1 (0.280)	9.6 (0.378)	
07	107	6.0 (0.236)	8.1 (0.319)	10.6 (0.417)	
08	108	7.0 (0.276)	9.1 (0.358)	11.6 (0.457)	
09	109	8.0 (0.315)	10.1 (0.398)	12.6 (0.496)	
10	110	9.0 (0.354)	11.1 (0.437)	13.6 (0.535)	
11	111	10.0 (0.394)	12.1 (0.476)	14.6 (0.575)	
12	112	11.0 (0.433)	13.1 (0.516)	15.6 (0.614)	
13	113	12.0 (0.472)	14.1 (0.555)	16.6 (0.654)	
14	114	13.0 (0.512)	15.1 (0.594)	17.6 (0.693)	
15	115	14.0 (0.551)	16.1 (0.634)	18.6 (0.732)	
16	116	15.0 (0.591)	17.1 (0.673)	19.6 (0.772)	
17	117	16.0 (0.630)	18.1 (0.713)	20.6 (0.811)	
18	118	17.0 (0.669)	19.1 (0.752)	21.6 (0.850)	
19	119	18.0 (0.709)	20.1 (0.791)	22.6 (0.890)	
20	120	19.0 (0.748)	21.1 (0.831)	23.6 (0.929)	
21	121	20.0 (0.787)	22.1 (0.870)	24.6 (0.969)	
22	122	21.0 (0.827)	23.1 (0.909)	25.6 (1.008)	
23	123	22.0 (0.866)	24.1 (0.949)	26.6 (1.047)	
24	124	23.0 (0.906)	25.1 (0.988)	27.6 (1.087)	
25	125	24.0 (0.945)	26.1 (1.028)	28.6 (1.126)	
26	126	25.0 (0.984)	27.1 (1.067)	29.6 (1.165)	
27	127	26.0 (1.024)	28.1 (1.106)	30.6 (1.205)	
28	128	27.0 (1.063)	29.1 (1.146)	31.6 (1.244)	
29	↓ 129 ↓	28.0 (1.102)	30.1 (1.185)	32.6 (1.283)	
30	04 6232 130 102 800	29.0 (1.142)	31.1 (1.224)	33.6 (1.323)	

HOW TO ORDER

04

6232

1XX

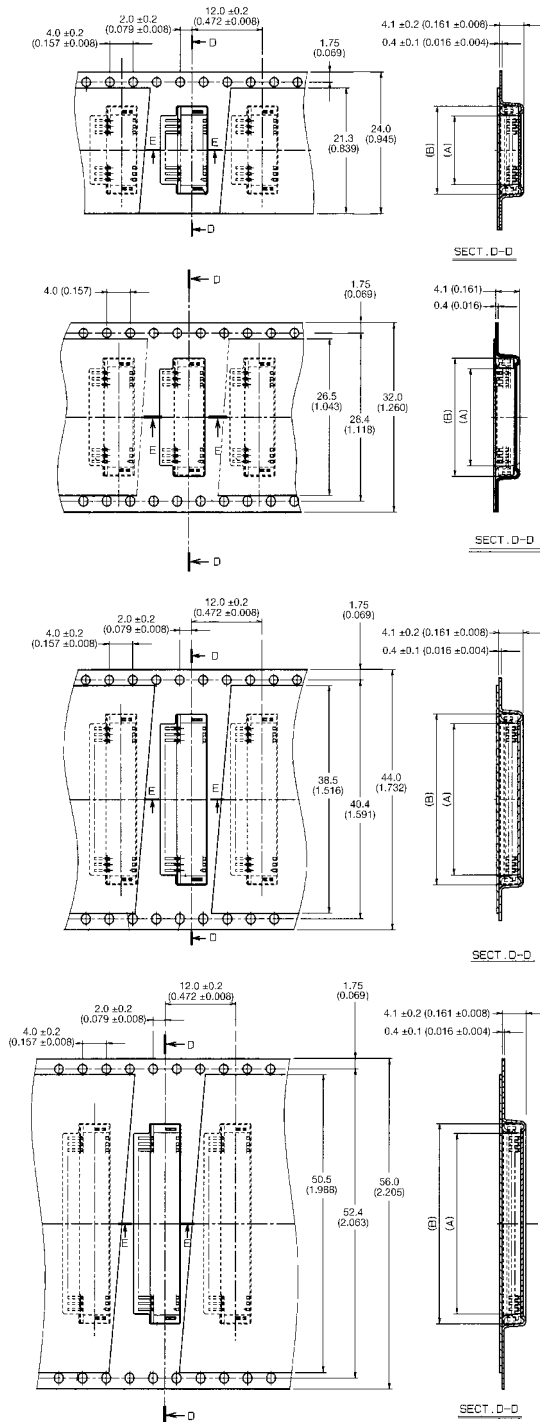
102

800

Number of Contacts

1.00mm Pitch

Series 6232 - Tape and Reel Package



Assembly Number	No. of Contacts	A	B
04 6232 103 10X 800	03	3.6 (0.142)	6.9 (0.272)
↑ 104 ↑	04	4.6 (0.181)	7.9 (0.311)
105	05	5.6 (0.220)	8.9 (0.350)
106	06	6.6 (0.260)	9.9 (0.390)
107	07	7.6 (0.299)	10.9 (0.429)
108	08	8.6 (0.339)	11.9 (0.469)
109	09	9.6 (0.378)	12.9 (0.508)
↓ 110 ↓	10	10.6 (0.417)	13.9 (0.547)
04 6232 111 10X 800	11	11.6 (0.457)	14.9 (0.587)

Assembly Number	No. of Contacts	A	B
04 6232 112 10X 800	12	12.6 (0.496)	15.9 (0.626)
↑ 113 ↑	13	13.6 (0.535)	16.9 (0.665)
114	14	14.6 (0.575)	17.9 (0.705)
115	15	15.6 (0.614)	18.9 (0.744)
116	16	16.6 (0.654)	19.9 (0.783)
↓ 117 ↓	17	17.6 (0.693)	20.9 (0.823)
04 6232 118 10X 800	18	18.6 (0.732)	21.9 (0.862)

Assembly Number	No. of Contacts	A	B
04 6232 119 10X 800	19	19.6 (0.772)	22.9 (0.902)
↑ 120 ↑	20	20.6 (0.811)	23.9 (0.941)
121	21	21.6 (0.850)	24.9 (0.980)
122	22	22.6 (0.890)	25.9 (1.020)
123	23	23.6 (0.929)	26.9 (1.059)
↓ 124 ↓	24	24.6 (0.969)	27.9 (1.098)
04 6232 125 10X 800	25	25.6 (1.008)	28.9 (1.138)

Assembly Number	No. of Contacts	A	B
04 6232 103 10X 800	03	3.6 (0.142)	6.9 (0.272)
↑ 104 ↑	04	4.6 (0.181)	7.9 (0.311)
105	05	5.6 (0.220)	8.9 (0.350)
106	06	6.6 (0.260)	9.9 (0.390)
107	07	7.6 (0.299)	10.9 (0.429)
108	08	8.6 (0.339)	11.9 (0.469)
↓ 109 ↓	09	9.6 (0.378)	12.9 (0.508)
04 6232 110 10X 800	10	10.6 (0.417)	13.9 (0.547)

HOW TO ORDER

04

6232

1XX

102

800

Number of Contacts

1000 Connectors per Tape and Reel.

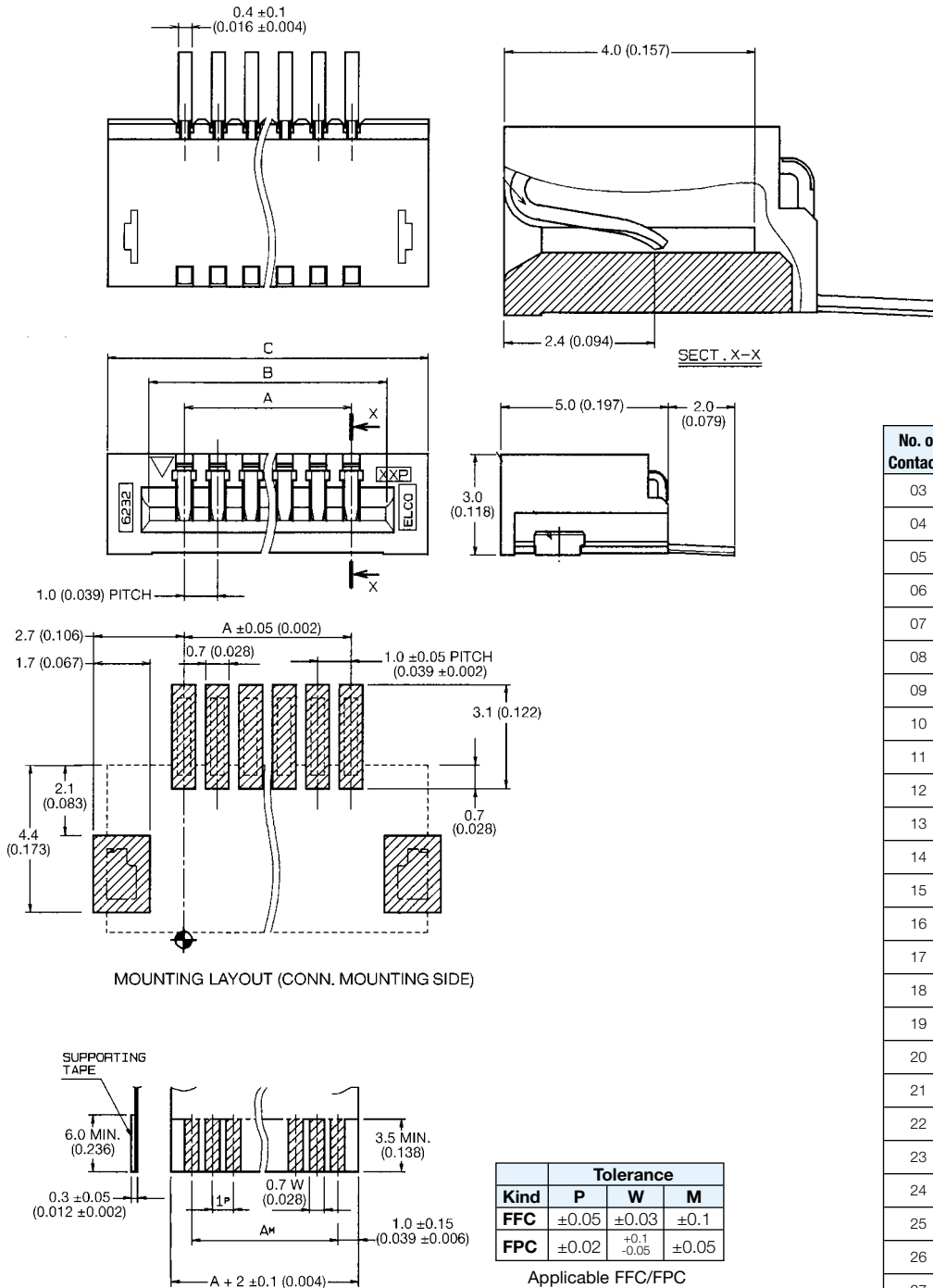
1.00mm Pitch



Series 6232 - LIF Right Angle SMT (Top Contact Type)

Specifications

- Number of Contacts – 3-30
- Tray Packaged or SMT Tape & Reel
- Voltage – 50V
- Current Rating – 0.5 amp max.
- Dielectric Withstanding Voltage – 500V RMS min.
- Operating Temperature – (-20°C - +70°C)
- Contact Material – phosphor bronze (tin-lead plated)
- Insulator Material – glass filled PPS or nylon
- FFC/FPC Thickness – 0.3 ±0.05mm (0.012 ±0.002")
- Profile Height – 3.0mm - 5.1mm (see sketch)



Kind	Tolerance		
	P	W	M
FFC	±0.05	±0.03	±0.1
FPC	±0.02	+0.1 -0.05	±0.05

Applicable FFC/FPC

No. of Contacts	Assembly Number	A	B	C
03	04 6232 103 103 800	2.0 (0.079)	4.1 (0.161)	6.6 (0.260)
04	↑ 104 ↑	3.0 (0.118)	5.1 (0.201)	7.6 (0.299)
05	105	4.0 (0.157)	6.1 (0.240)	8.6 (0.339)
06	106	5.0 (0.197)	7.1 (0.280)	9.6 (0.378)
07	107	6.0 (0.236)	8.1 (0.319)	10.6 (0.417)
08	108	7.0 (0.276)	9.1 (0.358)	11.6 (0.457)
09	109	8.0 (0.315)	10.1 (0.398)	12.6 (0.496)
10	110	9.0 (0.354)	11.1 (0.437)	13.6 (0.535)
11	111	10.0 (0.394)	12.1 (0.476)	14.6 (0.575)
12	112	11.0 (0.433)	13.1 (0.516)	15.6 (0.614)
13	113	12.0 (0.472)	14.1 (0.555)	16.6 (0.654)
14	114	13.0 (0.512)	15.1 (0.594)	17.6 (0.693)
15	115	14.0 (0.551)	16.1 (0.634)	18.6 (0.732)
16	116	15.0 (0.591)	17.1 (0.673)	19.6 (0.772)
17	117	16.0 (0.630)	18.1 (0.713)	20.6 (0.811)
18	118	17.0 (0.669)	19.1 (0.752)	21.6 (0.850)
19	119	18.0 (0.709)	20.1 (0.791)	22.6 (0.890)
20	120	19.0 (0.748)	21.1 (0.831)	23.6 (0.929)
21	121	20.0 (0.787)	22.1 (0.870)	24.6 (0.969)
22	122	21.0 (0.827)	23.1 (0.909)	25.6 (1.008)
23	123	22.0 (0.866)	24.1 (0.949)	26.6 (1.047)
24	124	23.0 (0.906)	25.1 (0.988)	27.6 (1.087)
25	125	24.0 (0.945)	26.1 (1.028)	28.6 (1.126)
26	126	25.0 (0.984)	27.1 (1.067)	29.6 (1.165)
27	127	26.0 (1.024)	28.1 (1.106)	30.6 (1.205)
28	128	27.0 (1.063)	29.1 (1.146)	31.6 (1.244)
29	↓ 129 ↓	28.0 (1.102)	30.1 (1.185)	32.6 (1.283)
30	04 6232 130 103 800	29.0 (1.142)	31.1 (1.224)	33.6 (1.323)

HOW TO ORDER

04

6232

1XX

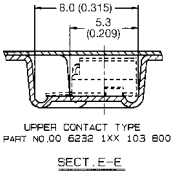
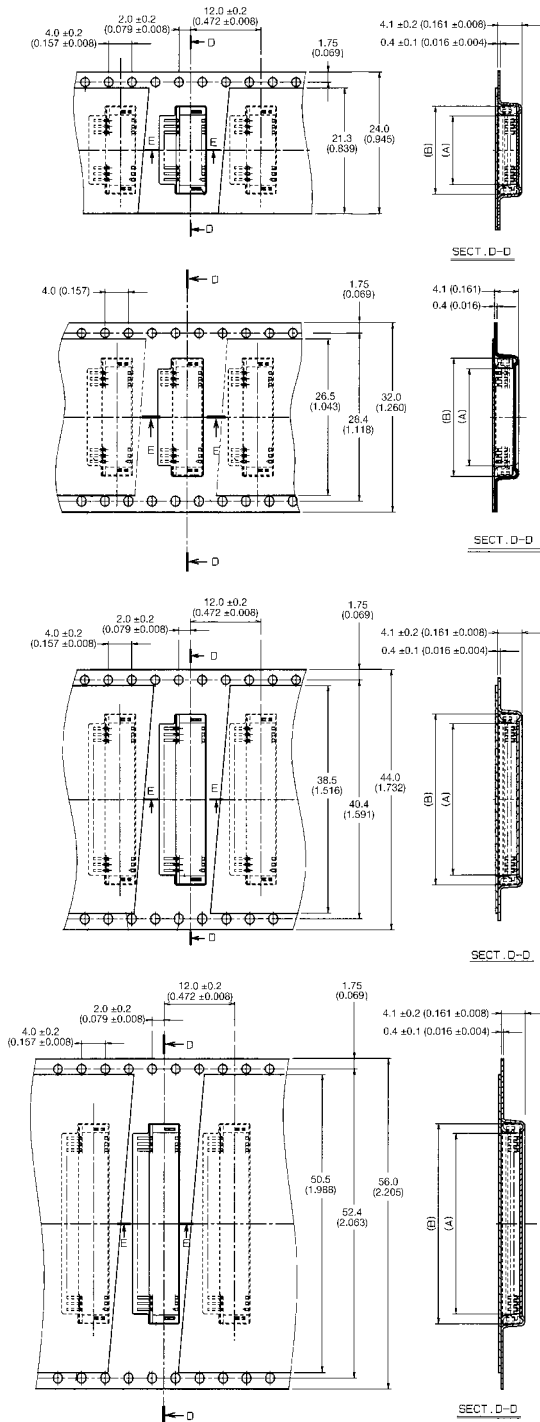
103

800

Number of Contacts

1.00mm Pitch

Series 6232 - Tape and Reel Package



Assembly Number	No. of Contacts	A	B
04 6232 103 10X 800	03	3.6 (0.142)	6.9 (0.272)
↑ 104 ↑	04	4.6 (0.181)	7.9 (0.311)
105	05	5.6 (0.220)	8.9 (0.350)
106	06	6.6 (0.260)	9.9 (0.390)
107	07	7.6 (0.299)	10.9 (0.429)
108	08	8.6 (0.339)	11.9 (0.469)
109	09	9.6 (0.378)	12.9 (0.508)
↓ 110 ↓	10	10.6 (0.417)	13.9 (0.547)
04 6232 111 10X 800	11	11.6 (0.457)	14.9 (0.587)

Assembly Number	No. of Contacts	A	B
04 6232 112 10X 800	12	12.6 (0.496)	15.9 (0.626)
↑ 113 ↑	13	13.6 (0.535)	16.9 (0.665)
114	14	14.6 (0.575)	17.9 (0.705)
115	15	15.6 (0.614)	18.9 (0.744)
116	16	16.6 (0.654)	19.9 (0.783)
↓ 117 ↓	17	17.6 (0.693)	20.9 (0.823)
04 6232 118 10X 800	18	18.6 (0.732)	21.9 (0.862)

Assembly Number	No. of Contacts	A	B
04 6232 119 10X 800	19	19.6 (0.772)	22.9 (0.902)
↑ 120 ↑	20	20.6 (0.811)	23.9 (0.941)
121	21	21.6 (0.850)	24.9 (0.980)
122	22	22.6 (0.890)	25.9 (1.020)
123	23	23.6 (0.929)	26.9 (1.059)
↓ 124 ↓	24	24.6 (0.969)	27.9 (1.098)
04 6232 125 10X 800	25	25.6 (1.008)	28.9 (1.138)

Assembly Number	No. of Contacts	A	B
04 6232 103 10X 800	03	3.6 (0.142)	6.9 (0.272)
↑ 104 ↑	04	4.6 (0.181)	7.9 (0.311)
105	05	5.6 (0.220)	8.9 (0.350)
106	06	6.6 (0.260)	9.9 (0.390)
107	07	7.6 (0.299)	10.9 (0.429)
108	08	8.6 (0.339)	11.9 (0.469)
↓ 109 ↓	09	9.6 (0.378)	12.9 (0.508)
04 6232 110 10X 800	10	10.6 (0.417)	13.9 (0.547)

HOW TO ORDER

04

6232

1XX

103

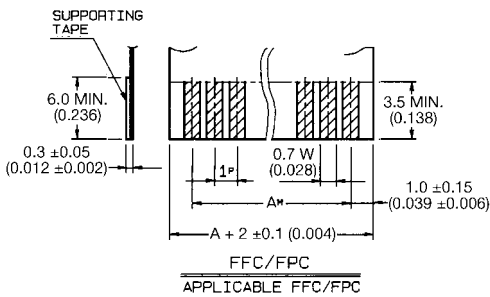
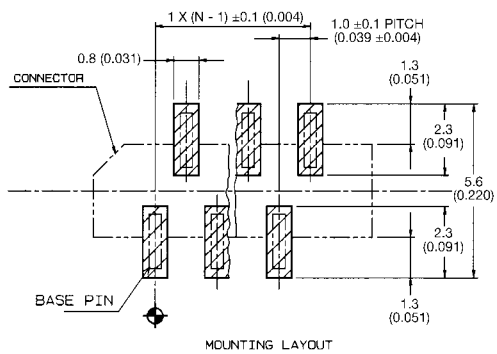
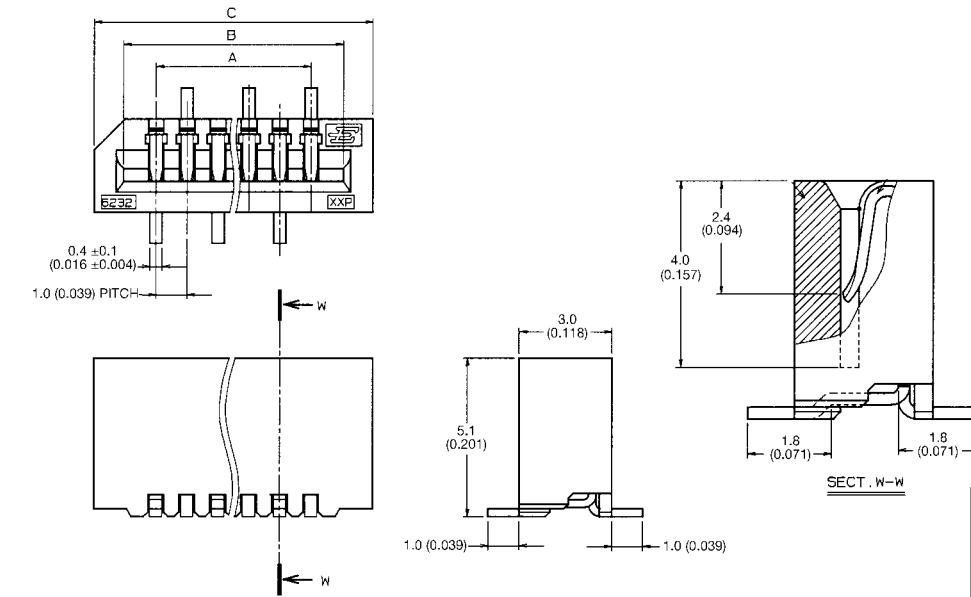
800

Number of Contacts

900 Connectors per Tape and Reel.

1.00mm Pitch

Series 6232 - LIF Vertical SMT



Tolerance			
Kind	P	W	M
FFC	±0.05	±0.03	±0.1
FPC	±0.02	+0.1 -0.05	±0.05

No. of Contacts	Assembly Number			
	A	B	C	
03	00 6232 103 006 800	2.0 (0.079)	4.1 (0.161)	6.0 (0.236)
04	↑ 104 ↑	3.0 (0.118)	5.1 (0.201)	7.0 (0.276)
05	105	4.0 (0.157)	6.1 (0.240)	8.0 (0.315)
06	106	5.0 (0.197)	7.1 (0.280)	9.0 (0.354)
07	107	6.0 (0.236)	8.1 (0.319)	10.0 (0.394)
08	108	7.0 (0.276)	9.1 (0.358)	11.0 (0.433)
09	109	8.0 (0.315)	10.1 (0.398)	12.0 (0.472)
10	110	9.0 (0.354)	11.1 (0.437)	13.0 (0.512)
11	111	10.0 (0.394)	12.1 (0.476)	14.0 (0.551)
12	112	11.0 (0.433)	13.1 (0.516)	15.0 (0.591)
13	113	12.0 (0.472)	14.1 (0.555)	16.0 (0.630)
14	114	13.0 (0.512)	15.1 (0.594)	17.0 (0.669)
15	115	14.0 (0.551)	16.1 (0.634)	18.0 (0.709)
16	116	15.0 (0.591)	17.1 (0.673)	19.0 (0.748)
17	117	16.0 (0.630)	18.1 (0.713)	20.0 (0.787)
18	118	17.0 (0.669)	19.1 (0.752)	21.0 (0.827)
19	119	18.0 (0.709)	20.1 (0.791)	22.0 (0.866)
20	120	19.0 (0.748)	21.1 (0.831)	23.0 (0.906)
21	121	20.0 (0.787)	22.1 (0.870)	24.0 (0.945)
22	122	21.0 (0.827)	23.1 (0.909)	25.0 (0.984)
23	123	22.0 (0.866)	24.1 (0.949)	26.0 (1.024)
24	124	23.0 (0.906)	25.1 (0.988)	27.0 (1.063)
25	125	24.0 (0.945)	26.1 (1.028)	28.0 (1.102)
26	126	25.0 (0.984)	27.1 (1.067)	29.0 (1.142)
27	127	26.0 (1.024)	28.1 (1.106)	30.0 (1.181)
28	128	27.0 (1.063)	29.1 (1.146)	31.0 (1.220)
29	↓ 129 ↓	28.0 (1.102)	30.1 (1.185)	32.0 (1.260)
30	00 6232 130 006 800	29.0 (1.142)	31.1 (1.224)	33.0 (1.299)

HOW TO ORDER

04

6232

1XX

015

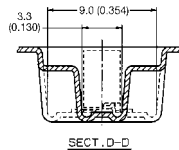
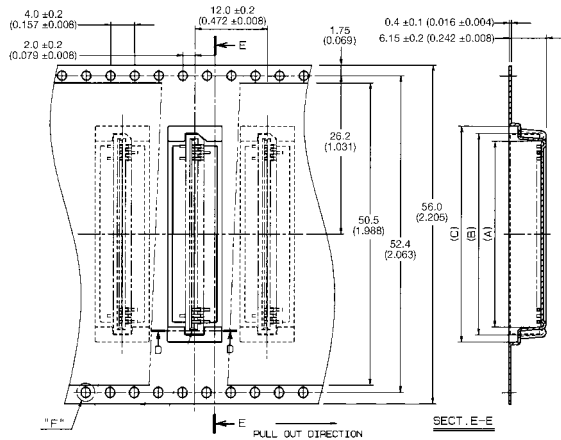
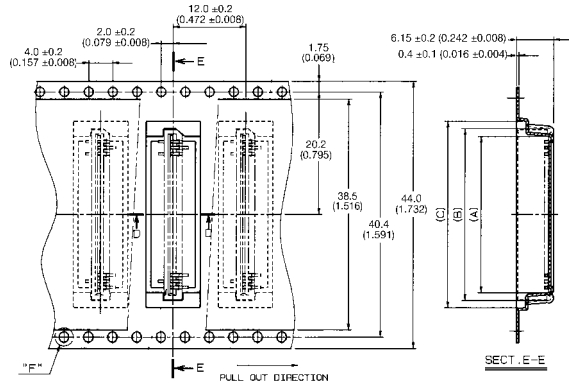
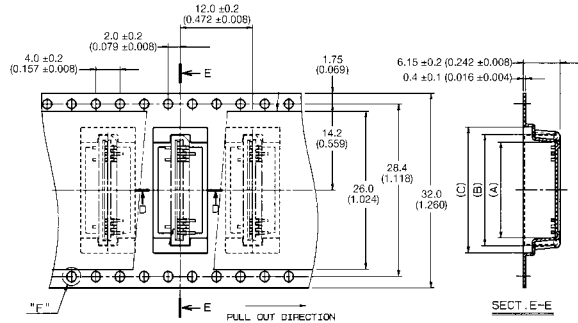
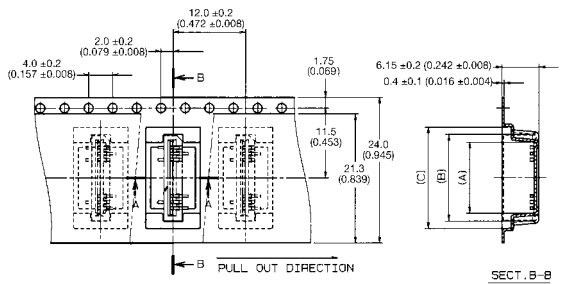
800

Number of Contacts

For tape and reel package refer to page 50.

1.00mm Pitch

Series 6232 - Tape and Reel Package



Assembly Number	No. of Contacts	A	B	C
04 6232 103 015 800	03	3.7 (0.146)	6.3 (0.248)	8.7 (0.343)
↑ 104	↑ 04	4.7 (0.185)	7.3 (0.287)	9.7 (0.382)
105	05	5.7 (0.224)	8.3 (0.327)	10.7 (0.421)
106	06	6.7 (0.264)	9.3 (0.366)	11.7 (0.461)
107	07	7.7 (0.303)	10.3 (0.406)	12.7 (0.500)
108	08	8.7 (0.343)	11.3 (0.445)	13.7 (0.539)
109	09	9.7 (0.382)	12.3 (0.484)	14.7 (0.579)
↓ 110	↓ 10	10.7 (0.421)	13.3 (0.524)	15.7 (0.618)
04 6232 111 015 800	11	11.7 (0.461)	14.3 (0.563)	16.7 (0.658)

Assembly Number	No. of Contacts	A	B	C
04 6232 112 015 800	12	12.7 (0.500)	15.3 (0.602)	17.7 (0.697)
↑ 113	↑ 13	13.7 (0.539)	16.3 (0.642)	18.7 (0.736)
114	14	14.7 (0.579)	17.3 (0.681)	19.7 (0.776)
115	15	15.7 (0.618)	18.3 (0.720)	20.7 (0.815)
116	16	16.7 (0.658)	19.3 (0.760)	21.7 (0.854)
↓ 117	↓ 17	17.7 (0.697)	20.3 (0.799)	22.7 (0.894)
04 6232 118 015 800	18	18.7 (0.736)	21.3 (0.839)	23.7 (0.933)

Assembly Number	No. of Contacts	A	B	C
04 6232 119 015 800	19	19.7 (0.776)	22.3 (0.878)	24.7 (0.972)
↑ 120	↑ 20	20.7 (0.815)	23.3 (0.917)	25.7 (1.012)
121	21	21.7 (0.854)	24.3 (0.957)	26.7 (1.051)
122	22	22.7 (0.894)	25.3 (0.996)	27.7 (1.091)
123	23	23.7 (0.933)	26.3 (1.035)	28.7 (1.130)
↓ 124	↓ 24	24.7 (0.972)	27.3 (1.075)	29.7 (1.169)
04 6232 125 015 800	25	25.7 (1.012)	28.3 (1.114)	30.7 (1.209)

Assembly Number	No. of Contacts	A	B	C
04 6232 126 015 800	26	26.7 (1.051)	29.3 (1.154)	31.7 (1.248)
↑ 127	↑ 27	27.7 (1.091)	30.3 (1.193)	32.7 (1.287)
128	28	28.7 (1.130)	31.3 (1.232)	33.7 (1.327)
↓ 129	↓ 29	29.7 (1.169)	32.3 (1.272)	34.7 (1.366)
04 6232 130 015 800	30	30.7 (1.209)	33.3 (1.311)	35.7 (1.406)

HOW TO ORDER

04

6232

1XX

015

800

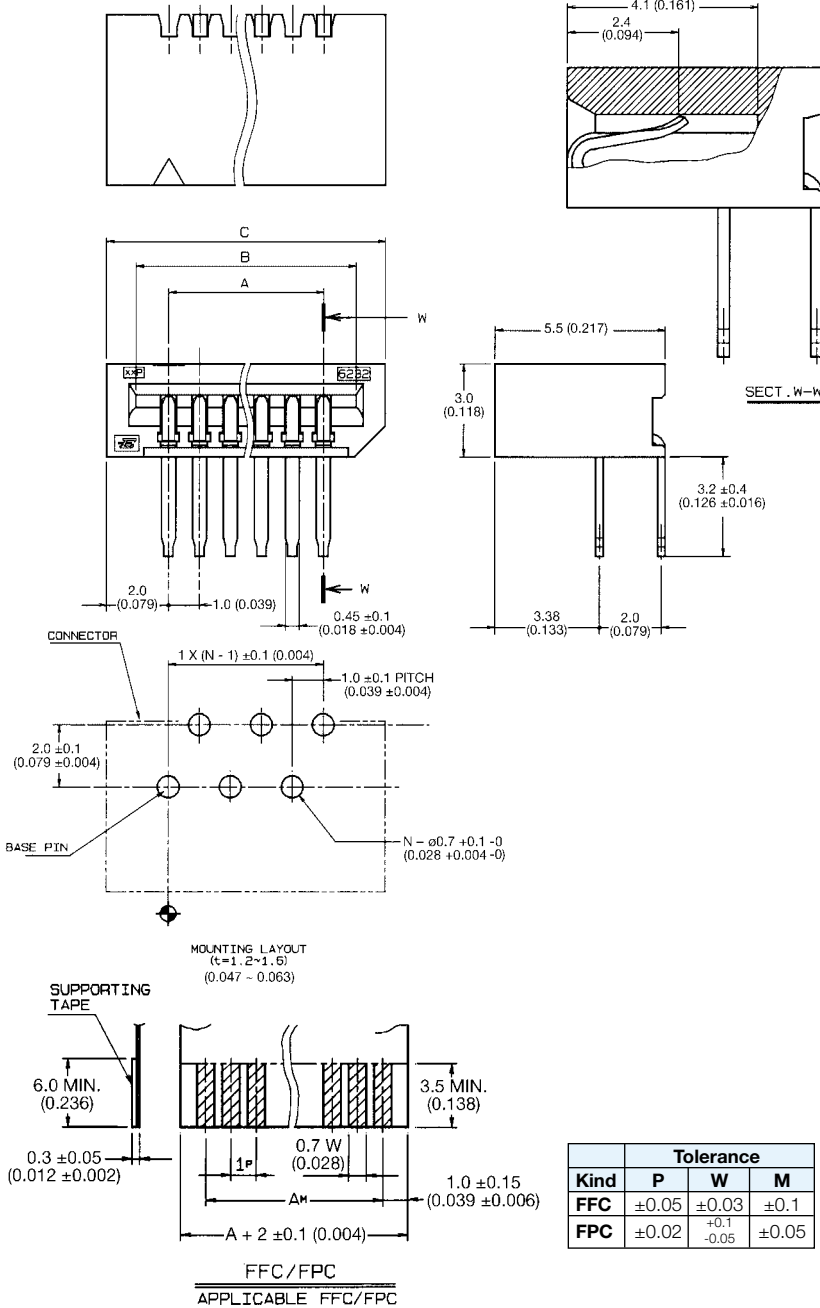
Number of Contacts

900 Connectors per Tape and Reel.



1.00mm Pitch

Series 6232 - LIF Right Angle Through Hole (Bottom Contact Type)



No. of Contacts	Assembly Number			Qty. Per Box	
	A	B	C		
03	00 6232 003 104 800	2.0 (0.079)	4.1 (0.161)	6.0 (0.236)	6000
04	↑ 004 ↑	3.0 (0.118)	5.1 (0.201)	7.0 (0.276)	5100
05	005	4.0 (0.157)	6.1 (0.240)	8.0 (0.315)	4500
06	006	5.0 (0.197)	7.1 (0.280)	9.0 (0.354)	4000
07	007	6.0 (0.236)	8.1 (0.319)	10.0 (0.394)	3600
08	008	7.0 (0.276)	9.1 (0.358)	11.0 (0.433)	3200
09	009	8.0 (0.315)	10.1 (0.398)	12.0 (0.472)	3000
10	010	9.0 (0.354)	11.1 (0.437)	13.0 (0.512)	2700
11	011	10.0 (0.394)	12.1 (0.476)	14.0 (0.551)	2500
12	012	11.0 (0.433)	13.1 (0.516)	15.0 (0.591)	2400
13	013	12.0 (0.472)	14.1 (0.555)	16.0 (0.630)	2200
14	014	13.0 (0.512)	15.1 (0.594)	17.0 (0.669)	2100
15	015	14.0 (0.551)	16.1 (0.634)	18.0 (0.709)	2000
16	016	15.0 (0.591)	17.1 (0.673)	19.0 (0.748)	1900
17	017	16.0 (0.630)	18.1 (0.713)	20.0 (0.787)	1800
18	018	17.0 (0.669)	19.1 (0.752)	21.0 (0.827)	1700
19	019	18.0 (0.709)	20.1 (0.791)	22.0 (0.866)	1600
20	020	19.0 (0.748)	21.1 (0.831)	23.0 (0.906)	1500
21	021	20.0 (0.787)	22.1 (0.870)	24.0 (0.945)	1500
22	022	21.0 (0.827)	23.1 (0.909)	25.0 (0.984)	1400
23	023	22.0 (0.866)	24.1 (0.949)	26.0 (1.024)	1300
24	024	23.0 (0.906)	25.1 (0.988)	27.0 (1.063)	1300
25	025	24.0 (0.945)	26.1 (1.028)	28.0 (1.102)	1200
26	026	25.0 (0.984)	27.1 (1.067)	29.0 (1.142)	1200
27	027	26.0 (1.024)	28.1 (1.106)	30.0 (1.181)	1200
28	028	27.0 (1.063)	29.1 (1.146)	31.0 (1.220)	1100
29	↓ 029 ↓	28.0 (1.102)	30.1 (1.185)	32.0 (1.260)	1100
30	00 6232 030 104 800	29.0 (1.142)	31.1 (1.224)	33.0 (1.299)	1000

HOW TO ORDER

00

6232

0XX

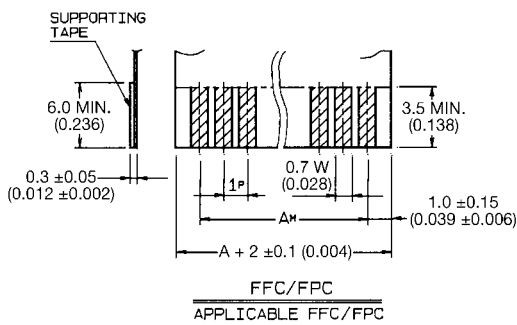
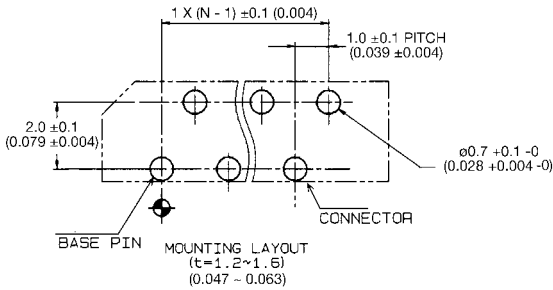
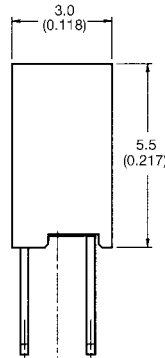
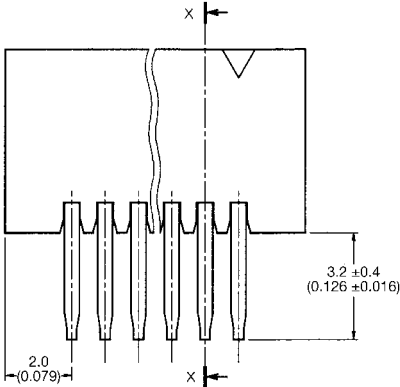
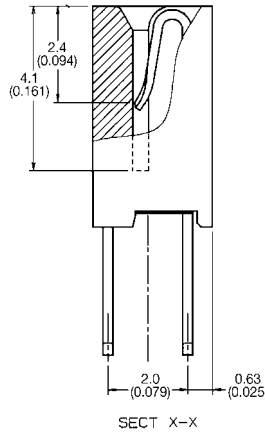
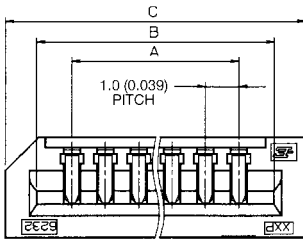
104

800

Number of Contacts

1.00mm Pitch

Series 6232 - LIF Vertical Through Hole



Kind	Tolerance		
	P	W	M
FFC	±0.05	±0.03	±0.1
FPC	±0.02	+0.1 -0.05	±0.05

No. of Contacts	Assembly Number	A	B	C	Qty. Per Box
03	00 6232 003 XXX 800	2.0 (0.079)	4.1 (0.161)	6.0 (0.236)	9000
04	↑ 004 ↑	3.0 (0.118)	5.1 (0.201)	7.0 (0.276)	7650
05	005	4.0 (0.157)	6.1 (0.240)	8.0 (0.315)	6750
06	006	5.0 (0.197)	7.1 (0.280)	9.0 (0.354)	6000
07	007	6.0 (0.236)	8.1 (0.319)	10.0 (0.394)	5400
08	008	7.0 (0.276)	9.1 (0.358)	11.0 (0.433)	4950
09	009	8.0 (0.315)	10.1 (0.398)	12.0 (0.472)	4500
10	010	9.0 (0.354)	11.1 (0.437)	13.0 (0.512)	4050
11	011	10.0 (0.394)	12.1 (0.476)	14.0 (0.551)	3750
12	012	11.0 (0.433)	13.1 (0.516)	15.0 (0.591)	3600
13	013	12.0 (0.472)	14.1 (0.555)	16.0 (0.630)	3300
14	014	13.0 (0.512)	15.1 (0.594)	17.0 (0.669)	3150
15	015	14.0 (0.551)	16.1 (0.634)	18.0 (0.709)	3000
16	016	15.0 (0.591)	17.1 (0.673)	19.0 (0.748)	2850
17	017	16.0 (0.630)	18.1 (0.713)	20.0 (0.787)	2700
18	018	17.0 (0.669)	19.1 (0.752)	21.0 (0.827)	2550
19	019	18.0 (0.709)	20.1 (0.791)	22.0 (0.866)	2400
20	020	19.0 (0.748)	21.1 (0.831)	23.0 (0.906)	2250
21	021	20.0 (0.787)	22.1 (0.870)	24.0 (0.945)	2250
22	022	21.0 (0.827)	23.1 (0.909)	25.0 (0.984)	2100
23	023	22.0 (0.866)	24.1 (0.949)	26.0 (1.024)	1950
24	024	23.0 (0.906)	25.1 (0.988)	27.0 (1.063)	1950
25	025	24.0 (0.945)	26.1 (1.028)	28.0 (1.102)	1800
26	026	25.0 (0.984)	27.1 (1.067)	29.0 (1.142)	1800
27	027	26.0 (1.024)	28.1 (1.106)	30.0 (1.181)	1800
28	028	27.0 (1.063)	29.1 (1.146)	31.0 (1.220)	1650
29	↓ 029 ↓	28.0 (1.102)	30.1 (1.185)	32.0 (1.260)	1650
30	00 6232 030 XXX 800	29.0 (1.142)	31.1 (1.224)	33.0 (1.299)	1650

HOW TO ORDER

00

6232

0XX

XXX

800

Number of Contacts

Variation Code

006 = With Kinked Leg
007 = Without Kinked Leg