

Features and Benefits

- Standard ISO communications
- User interface software
- RS232 serial communication
- Dedicated instruction set
- 6 to 9Volts supply compliant

Ordering Information

Part No.
DVK90121

General Description

The development kit DVK90121 has been developed by Melexis to create specific applications using international standards ISO/IEC and to evaluate the advantages and the high flexibility of the MLX90121 13.56MHz multi-norms RFID transceiver.

The DVK90121 consists of the evaluation board EVB90121 connected to the RFID universal development board. The universal development board contains the firmware for the communication with the MLX90121 and the communication with a computer through the RS232 serial interface.

A user interface software UT121, developed by Melexis, allows the user controlling the communication by initializing the MLX90121 device, sending specific commands and receiving the corresponding reply.

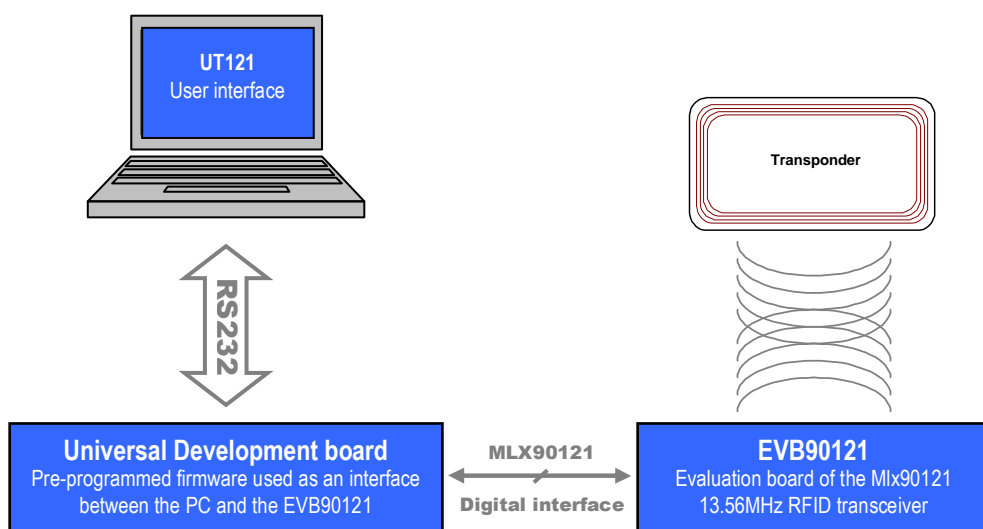


Figure 1: DVK90121 block schematic

Table of Contents

1. UNPACKING THE SYSTEM	3
2. CONNECTING THE SYSTEM	3
3. INSTALLING THE UT121 USER INTERFACE SOFTWARE	4
4. WORKING WITH THE UT121 USER INTERFACE SOFTWARE	4
4.1 THE FIRST RUN	4
4.2 MAIN WINDOW	5
4.3 COMMUNICATION STATUS	5
4.4 DEVICE STATUS	6
4.5 MAIN MENU	6
4.6 COMMAND TREE	7
4.7 COMMAND LIST & REGISTER'S CONFIGURATION	8
4.8 COMMUNICATION SCREEN	9
5. SET OF COMMANDS	10
5.1 OP CODES	10
5.2 PARAMETERS	10
5.3 KEY WORDS	10
5.4	10
5.5 EXAMPLES	11
5.4.1 <i>ISO14443 type B</i>	11
5.4.2 <i>ISO15693 single/dual sub-carrier</i>	11
6. DISCLAIMER	13

1. Unpacking the system

The DVK90121 is delivered with all the components, documentations and software listed below.

- Evaluation board EVB90121 with its specific antenna,
- Universal development board,
- RS232 and flat cables for PC and EVB90121 connections,
- Disk set consisting of the UT121 software and associated documentations.

2. Connecting the system

When you start with the development kit DVK90121, please follow the procedure described below.

- 1) Connect the PCB antenna to the evaluation board EVB90121 using the SMA connector.
- 2) Connect the EVB90121 with its antenna to the universal evaluation board using the flat cable provided in the box. Connect the flat cable in the PORTA connector of the universal development board (in the middle of the three 10 pins connectors in line).
- 3) Connect the universal development board to the PC using the RS232 cable. The RS232 cable is fitted into the DB9 connector of the universal development board and the other end is inserted into the COM port of the PC (DB9 connector). The chosen COM port can be selected in the UT121 software.
- 4) Connect the Power Supply of the universal development board and EVB90121. Both Power Supplies are required with a standard 2.1mm barrel connector and must be DC 6 to 9 Volts.
- 5) Switch on SW1 button on the universal development board.

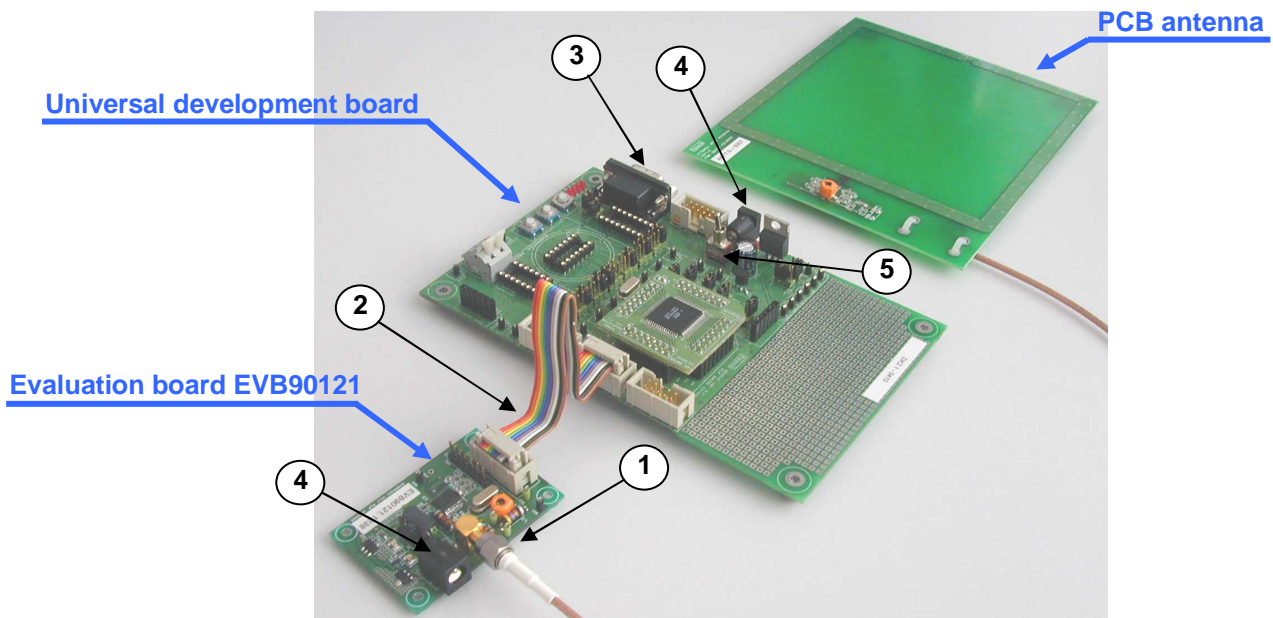


Figure 2: Connection of the DVK90121

Important Note: The supply must be between **6 to 9 Volts DC**. Higher voltage may damage permanently the DVK90121 circuit.

3. Installing the UT121 user interface software

To install the software, please insert the compact disc provided with the kit in your computer and simply copy the UT121 folder on your computer.

The user interface software is now ready to use and can be started by double-clicking on the icon *UT121*.

Note: To remove the UT121 software, you only need to delete the folder that you created on your PC. The software doesn't modify the registry and doesn't write anything to the system folders.

4. Working with the UT121 user interface software

4.1 The first run

When you execute the UT121 software for the first time, the following window appears. It contains some explanation about the automatic update. Please read carefully the text displayed, choose the appropriate update check interval and press OK button.

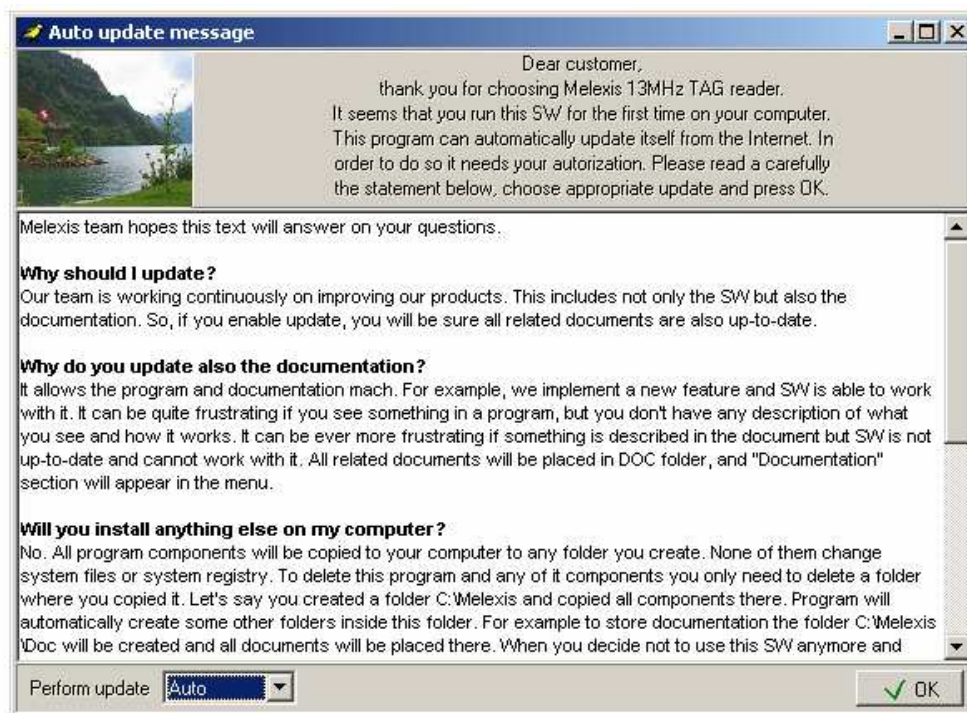


Figure 3: First use message

The update check interval will be used to automatically check on the Melexis WEB-site if new updates are available. The software will ask to the user if he allows the download and the automatic replacement of the user interface software and firmware. If you choose 'Never' as the update interval you will need to update the program by yourself using the "update" command in the "option" menu.

4.2 Main window

When the UT121 software is executed, the following main window will be displayed. It is structured in several parts: main menu, device status, communication status, command tree, command list and communication parts.

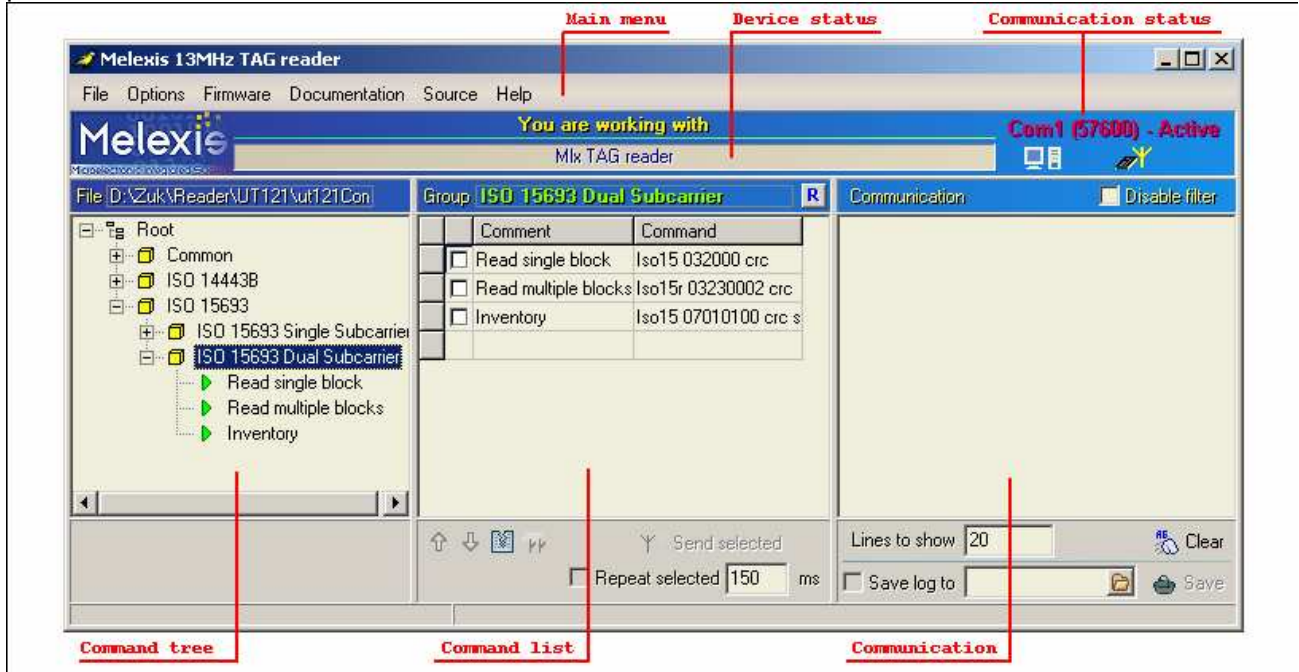


Figure 4: UT121 main window

The following chapters describe in detail all parts which compose the main window to familiarize the user with all the possibilities of the UT121 user interface software.

4.3 Communication status

The UT121 user interface software can communicate the RS232 or USB serial interfaces. The *communication status* part displays the status of the selected port. (Use of the DVK90121 is only possible through RS232 port)

A double-click on the *communication status* opens the “select port window” which allows the user selecting the appropriate port and Baud rate. Current data will be updated by pressing on the “update” button.

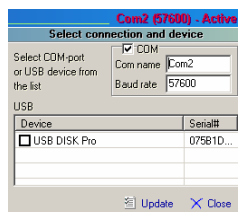


Figure 5: select port window

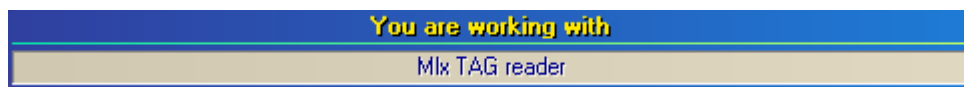
If the selected port exists and can be used by the program, it will be opened and “Active” state will be reported. “Closed” state means that the selected port doesn’t exist on the computer or that an other software already use it.

Notes:

- (1) Communication setup are 57600 baud with RS232.
- (2) When the program is closed, the current settings will be saved in the configuration file "ut121Config.cfg". Next time the program is executed these settings will be automatically uploaded.

4.4 Device status

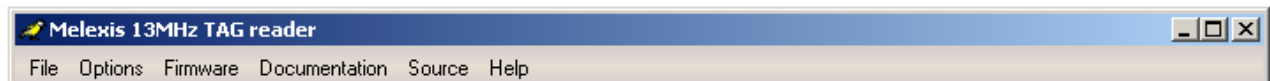
The device status shows if a Melexis development kit is connected to the user UT121. Then the name of the development kit is displayed as shown on the following picture.



If any development kit has been successfully detected, "No device" will be reported in the device status.

4.5 Main menu

The main menu contains several drop-down menus listed and described below. Care should be taken that the view of the main menu can be modified after an update of the software.



File: All options to save and load a *Command List*. A *Command list* is a group which may contain commands to be executed.

Options: Automatic update options

- o Program settings: *Option to save the firmware file (hexadecimal file) during an automatic updates procedure. Option to remember the screen size when the program is closed.*
- o Auto update options: *Option concerning the automatic check interval.*
- o Connection: *Used to specify a proxy settings if necessary*
- o Update now: *The software will find new updates available on the Melexis WEB-site.*

Firmware: Used to load the firmware file (hexadecimal files .hex) and to program it into the DVK90121 through the serial interface. The current firmware into the DVK90121 will be replaced by the new one.

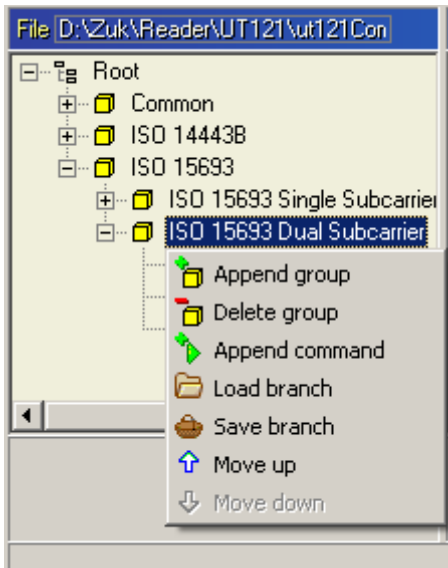
Documentation: Contains the up-to-date documentation of the DVK90121. Last files are downloaded when an update is executed

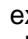
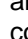
Source: Contains the updated microcontroller source code of the DVK90121. Last version is downloaded when an update is executed.

Help: To get Libraries and Firmware versions

4.6 Command tree

The command tree window contains a set of commands supported by the DVK90121 organized in groups, sub-groups and commands. The complete structure is saved in the “*ut121ComList.tv*” and will be automatically loaded by the UT121 software when started. The following picture shows an organization’s example of the command tree window.




As an example, ‘ISO15693 Dual Subcarrier’ group contains several commands according to Iso15693 standard. If a DVK90121 is connected and recognized by the software, each command can be executed separately by clicking on the  icon. The entire group can also be executed by clicking on the  icon, in this case all commands include into the corresponding group will be executed one after the other. All groups may contain several sub-groups with another set of commands. In the example, the ISO15693 group contains two sub-groups for Single or Dual sub-carrier specific commands.

The complete tree structure can be modified by the user and a right click on the name of the group or sub-group opens a popup menu with several options. Then the user can append a subgroup, delete the entire group, append a new command into this group and move the branch up and down in the list. It is also possible to save the complete branch (group with its complete structure, sub-groups, commands and register’s configuration) and to load this branch into another group. The same menu can be opened with a right-click on

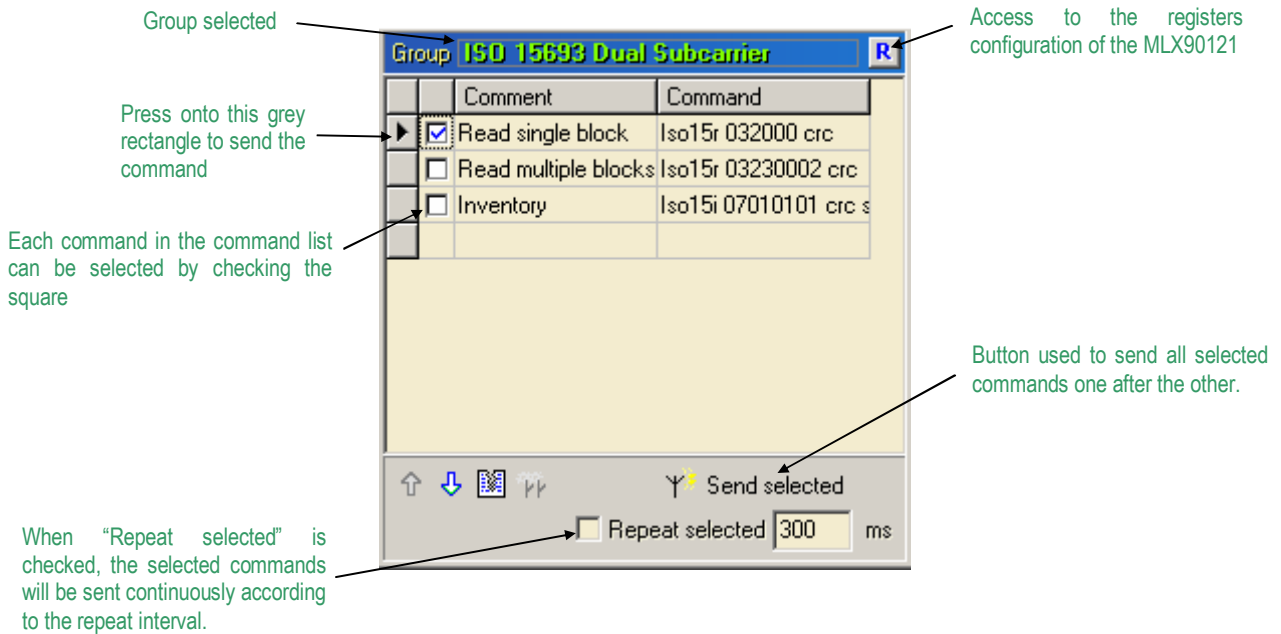
the command. Then the user can delete the command, change its position in the group and editing it.

All commands of the UT121 software are separated in two parts. The *Comment* part, which is a name chosen by the user and the *Command* part, which is the real command send to the DVK90121. This command cannot be completely defined by the user and should have a fixed definition part to be understood by the firmware.

To create a new command, right-click on a group to open the popup menu and chose the ‘*Append command*’ line. Then enter the name (*comment*) of the command and press “OK” button. The command will appear with a red symbol  while the *Command* part has not been entered. Then, to fill in the *Command* part, right-click on the command and chose the “*Edit command*” button.

4.7 Command list & Register's configuration

The middle part of a main window represents the list of commands included in the group selected in the command tree window. Both, *Comment* and *Command* parts are displayed.



Group selected

Access to the registers configuration of the MLX90121

Press onto this grey rectangle to send the command

Each command in the command list can be selected by checking the square

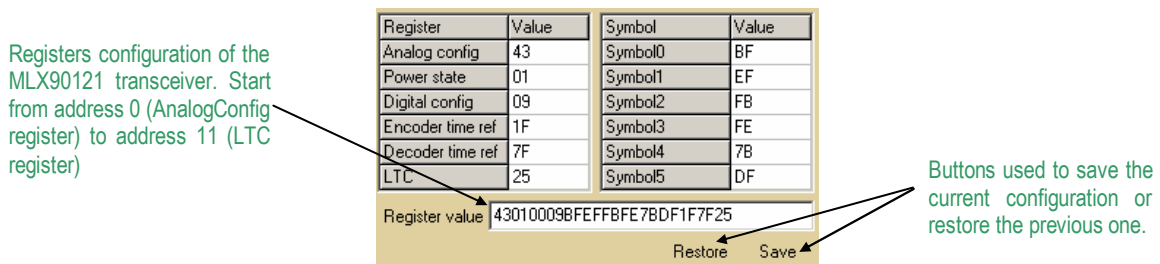
Button used to send all selected commands one after the other.

When "Repeat selected" is checked, the selected commands will be sent continuously according to the repeat interval.

The commands can be executed by pressing the grey rectangle on the left. Several commands can be selected and executed altogether by checking the corresponding white square and by pressing on the 'Send selected' button. If Repeat selected is checked all selected commands will be sent continuously according to the repeat interval.

Note: If the specified interval is too small and the system cannot execute commands that fast, it will increase this interval automatically.

To each group or sub-group selected corresponds a specific registers configuration of the MLX90121, and all commands grouped will be executed with the same registers configuration. When a group or sub-group is selected, the UT121 software automatically sends the current configuration to the DVK90121 to update the registers of the MLX90121 transceiver. To access this registers configuration, press onto the and a window with all register's name and hexadecimal values will be displayed. The current value is automatically updated when this window is closed (press again on the button).



Registers configuration of the MLX90121 transceiver. Start from address 0 (AnalogConfig register) to address 11 (LTC register)

Buttons used to save the current configuration or restore the previous one.

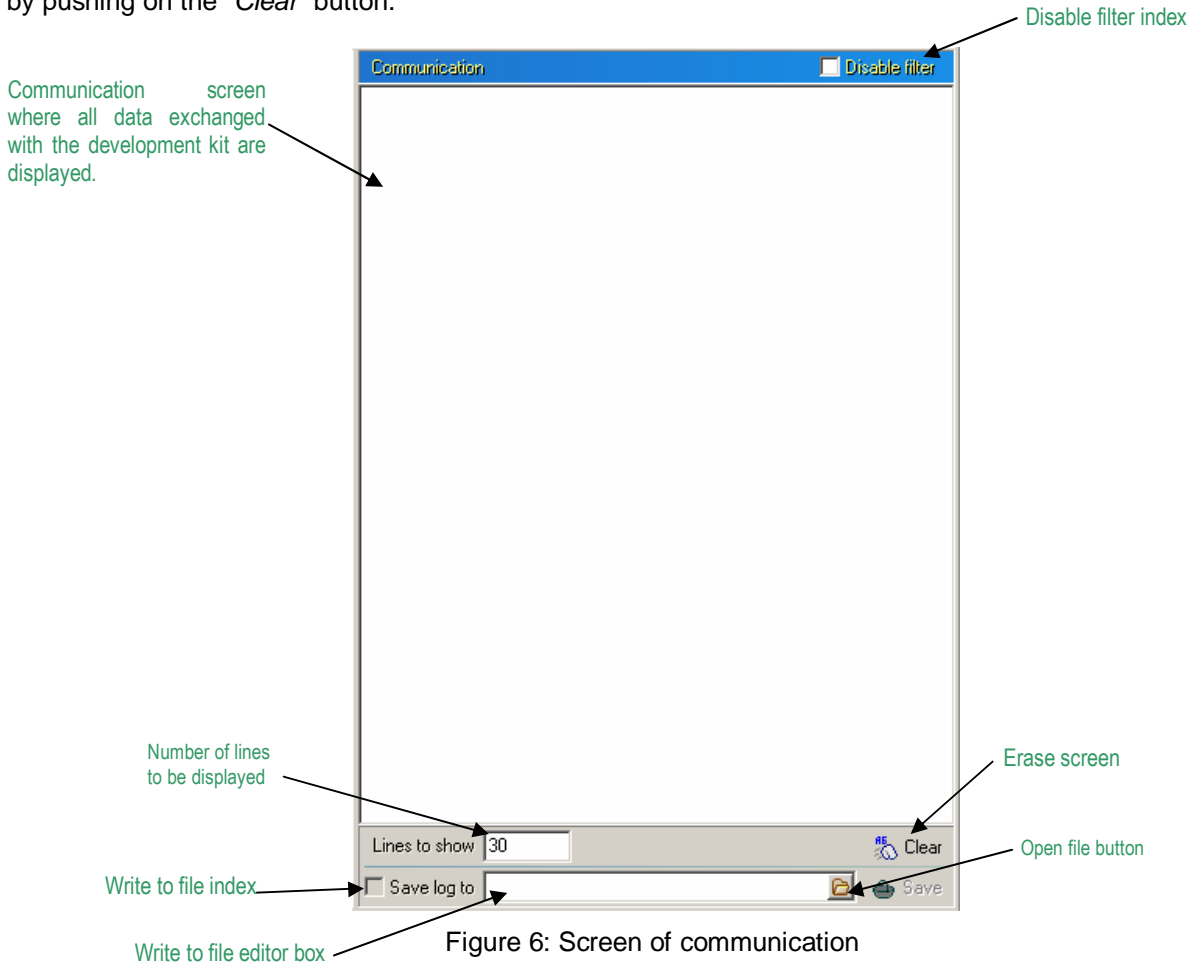
Register	Value	Symbol	Value
Analog config	43	Symbol0	BF
Power state	01	Symbol1	EF
Digital config	09	Symbol2	FB
Encoder time ref	1F	Symbol3	FE
Decoder time ref	7F	Symbol4	7B
LTC	25	Symbol5	DF

Register value: 430100098BFEBFE7BDF1F7F25

Restore Save

4.8 Communication screen

The right side of the main window shows the communication between the computer and the development kit. Each time the user sends a command, it appears in the screen, followed by the reply of the DVK90121. The user can specify the number of displayed lines in the “*Lines to show*” window. It was set up to make sure the most recent command or reply are displayed without scrolling. Moreover, it is possible to erase the screen by pushing on the “*Clear*” button.



The content of the screen can be automatically written to a file. To do this, the file name must be specified and the index “*Save log to*” must be selected. File name can directly be specified by the user in the “*Write to file*” editor box or an existing file can be opened by using “*Open file*” button.

The program continuously communicates with the reader to test its presence, but these internal commands are filtered. It is possible to disable the filter with “*Disable filter*” option, and thus see all communications between the computer and DVK90121 device.

5. Set of commands

The firmware controls the communication with the MLX90121 multi-protocol RFID reader. Therefore, it has to be informed by the UT121 software of the protocol used and the command that needs to be executed. This chapter describes in detail the set of instructions used for the communication to the DVK90121 (microcontroller firmware).

The different commands are based on Mnemonic assignment defined by several ASCII characters forming the OP code and defining the protocol used. The OP code is followed by a variable number of Hexadecimal parameters, which form the command according to the protocol used and specific key words as CRC, BCC.

Notes:

- (1) The commands are always defined MSB first in the UT121 software. The firmware will take care of the data direction according to the standards specification.
- (2) Please note that the commands of the UT121 software are case insensitive. Then it is possible for the user to type commands with capital or small letters.

5.1 OP codes

The OP codes are used to inform the firmware of the protocol used to be able to control the communication.

Iso14b	OP code for ISO14443 type B
Iso15	OP code for ISO15693 single and dual sub-carrier

5.2 Parameters

The parameters form the request sends to the transponder according to the standard used. For more information concerning these parameters, please refer to the ISO norms and the chapter 5.4 below.

5.3 Key words

Some key words are used to facilitate the implementation of the complete commands. For example, all parity check bytes or words are automatically calculated by the firmware and send with the request.

crc	The 16bits CRC ($X^{16} + X^{12} + X^5 + 1$) is automatically calculated by the firmware and sends with the request.
slot_X	Used to define the number of slots during an <i>Inventory</i> and <i>Write</i> requests of ISO15693. X must be between 1 and 16.

5.4

5.5 Examples

Some examples of commands are described in this chapter.

5.4.1 ISO14443 type B

The DVK90121 allows the communication until the level 3 of the ISO14443 protocol called “*Initialization and anticollision*”.

- WUPB (Wake-up type B TAG)

Op code	Parameters	Key word
Iso14b	050008	crc
	'05' : Anticol. Prefix byte APF '00' : Application Family Id. AFI '00' : PARAM (WUPB, Nbr of slots)	The 16bits CRC type B is automatically calculated by the firmware and send with the request.

- Slot-MARKER (slots after REQW/WUPB command)

Op code	Parameters	Key word
Iso14b	15	crc
	'15' : Anticol. prefix byte APn 2 slots	The 16bits CRC type B is automatically calculated by the firmware and send with the request.

- ATTRIB

Op code	Parameters	Key word
Iso14b	1D92036A9600000101	crc
	'1D' : Attrib command '92036A96' : Identifier PUPI send by the TAG after a successful REQW/WUPB command '00' : Param 1 '00' : Param 2 '01' : Param 3 '01' : Param 4	The 16bits CRC type B is automatically calculated by the firmware and send with the request.

5.4.2 ISO15693 single/dual sub-carrier

The DVK90121 allows the communication until the level 3 of the ISO15693 protocol called “*Anticollision and transmission protocol*”.

- READ SINGLE BLOCK (RSB)

Op code	Parameters	Key word
Iso15	022000	crc
	'02' : Flags of the request '20' : Read single block command '00' : Block number	The 16bits CRC type B is automatically calculated by the firmware and send with the request.

○ WRITE SINGLE BLOCK (WSB, CSB)

Op code	Parameters	Key words	
Iso15	42210011223344	crc	Slot 2
	'42' : Flags of the request '21' : Write single block command '00' : Block number '11223344' : Data to write	The 16bits CRC is automatically calculated by the firmware and send with the request.	Two slots send after the request.

Note: Certain transponder doesn't support the write command with the option bit set (Flags to 42/43) or cleared (Flags to 02/03).

○ INVENTORY

Op code	Parameters	Key words	
Iso15	06010100	crc	Slot 15
	'06' : Flags of the request '01' : Inventory command '01' : mask length (in this case we use only 1 bit) '00' : mask value. In this example mask value is xxxxxxx0	The 16bits CRC is automatically calculated by the firmware and send with the request.	Two slots send after the request.

○ ANTICOLLISION SEQUENCE

Op code	Parameters
Iso15	Inventory
For ASK	Perform a complete Inventory sequence. All the UIDs of the transponders in the field will be displayed.
Iso15	Inventory
For FSK	Perform a complete Inventory sequence. All the UIDs of the transponders in the field will be displayed.

6. Disclaimer

- 1) The information included in this documentation is subject to Melexis intellectual and other property rights. Reproduction of information is permissible only if the information will not be altered and is accompanied by all associated conditions, limitations and notices.
 - 2) Any use of the documentation without the prior written consent of Melexis other than the one set forth in clause 1 is an unfair and deceptive business practice. Melexis is not responsible or liable for such altered documentation.
 - 3) The information furnished by Melexis in this documentation is provided 'as is'. Except as expressly warranted in any other applicable license agreement, Melexis disclaims all warranties either express, implied, statutory or otherwise including but not limited to the merchantability, fitness for a particular purpose, title and non-infringement with regard to the content of this documentation.
 - 4) Notwithstanding the fact that Melexis endeavors to take care of the concept and content of this documentation, it may include technical or factual inaccuracies or typographical errors. Melexis disclaims any responsibility in connection herewith.
 - 5) Melexis reserves the right to change the documentation, the specifications and prices at any time and without notice. Therefore, prior to designing this product into a system, it is necessary to check with Melexis for current information.
 - 6) Melexis shall not be liable to recipient or any third party for any damages, including but not limited to personal injury, property damage, loss of profits, loss of use, interrupt of business or indirect, special incidental or consequential damages, of any kind, in connection with or arising out of the furnishing, performance or use of the information in this documentation.
 - 7) The product described in this documentation is intended for use in normal commercial applications. Applications requiring operation beyond ranges specified in this documentation, unusual environmental requirements, or high reliability applications, such as military, medical life-support or life-sustaining equipment are specifically not recommended without additional processing by Melexis for each application.
 - 8) Any supply of products by Melexis will be governed by the Melexis Terms of Sale, published on www.melexis.com.
- © Melexis NV. All rights reserved.

For the latest version of this document, go to our website at:

www.melexis.com

Or for additional information contact Melexis Direct:

Europe, Asia:	Americas:	Asia:
Phone: +32 1367 0495	Phone: +1 603 223 2362	Phone: +32 1367 0495
E-mail: sales_europe@melexis.com	E-mail: sales_usa@melexis.com	E-mail: sales_asia@melexis.com

ISO/TS 16949 and ISO14001 Certified