

MATERIALS AND FINISHES

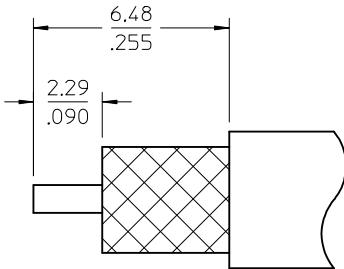
BODY, COUPLING NUT: SEE TABLE
PLATED SEE TABLE

CONTACT: BRASS
PLATED SEE TABLE

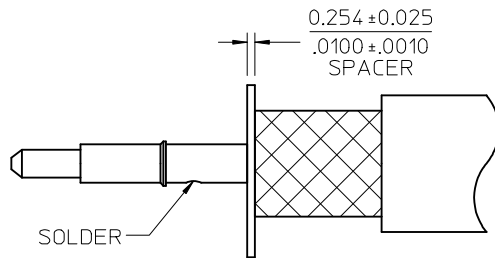
INSULATOR: TEFLON

GASKET: SILICONE RUBBER

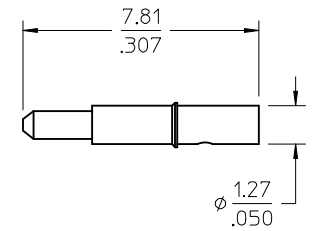
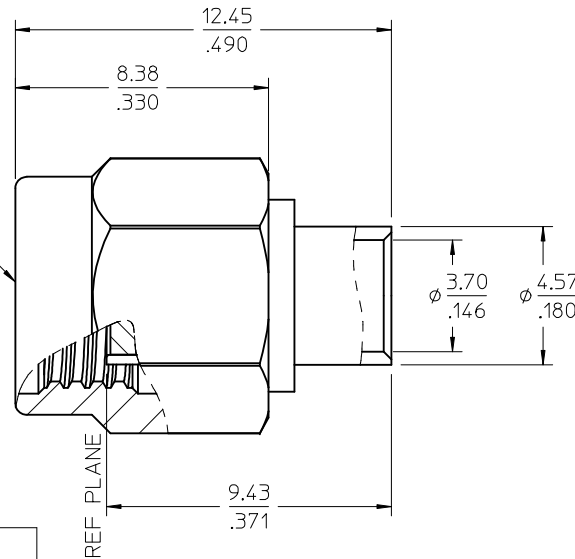
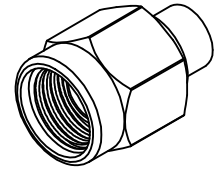
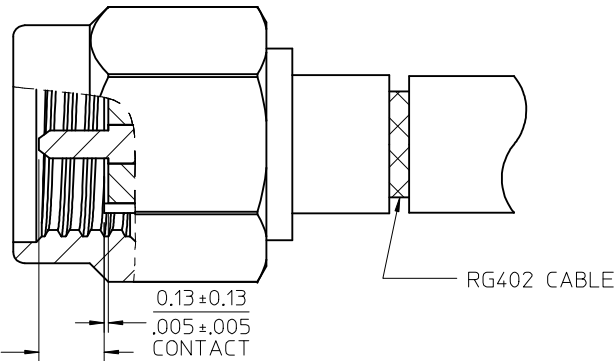
C'RING: BERYLLIUM COPPER



RECOMMENDED CABLE STRIP



SMA PLUG
INTERFACE



73251-0735	GOLD (1u MIN)	GOLD (5u MIN)	GOLD (1u MIN)	BRASS
73251-0734	GOLD (10u MIN)	GOLD (30u MIN)	GOLD (1u MIN)	BRASS
73251-0733	GOLD (30u MIN)	GOLD (30u MIN)	PASSIVATED	STAINLESS STEEL
73251-0732	GOLD (30u MIN)	GOLD (30u MIN)	GOLD (5u MIN)	STAINLESS STEEL
73251-0731	TRI-METAL	GOLD (30u MIN)	NICKEL(70u MIN)	BRASS
73251-0730	GOLD (10u MIN)	GOLD (10u MIN)	GOLD (1u MIN)	BRASS
PART NO.	BODY	CONTACT	COUPLING NUT	BODY/COUPLING NUT

PS-89675-3640	ELEX/MECH PERFORMANCE
MIL-STD-348A, FIG. 310.1	INTERFACE
SPECIFICATION	DESCRIPTION

CHG:ADDED -0735
PER PDR/5082030
EC NO: URF2016-0120
DRW:RYEH 2015/08/17
CHKD:
APPR:YCHENG 2015/08/21
REV

QUALITY SYMBOLS
▽=0
▽=0
▽=0

GENERAL TOLERANCES (UNLESS SPECIFIED)
mm INCH
4 PLACES ± --- ± ---
3 PLACES ± --- ± ---
2 PLACES ± --- ± ---
1 PLACE ± --- ± ---
0 PLACE ± ±
ANGULAR ± 2 °
DRAFT WHERE APPLICABLE MUST REMAIN WITHIN DIMENSIONS

DIMENSION STYLE MM/IN
DRAWN BY DATE
SSS 2000/07/06
CHECKED BY DATE
TEF 2000/07/06
APPROVED BY DATE
GMH 2000/07/06
MATERIAL NO.
SEE TABLE
SIZE C

SCALE 8:1
DESIGN UNITS METRIC
THIRD ANGLE PROJECTION
TITLE
SMA PLUG STR RG402
50 OHMS, EWR-3418
SMA-PC
molex
DOCUMENT NO. SD-73251-073
SHEET NO. 1 OF 1
THIS DRAWING CONTAINS INFORMATION THAT IS PROPRIETARY TO MOLEX INCORPORATED AND SHOULD NOT BE USED WITHOUT WRITTEN PERMISSION