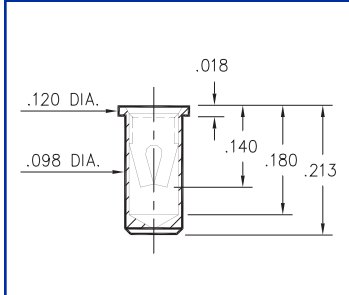
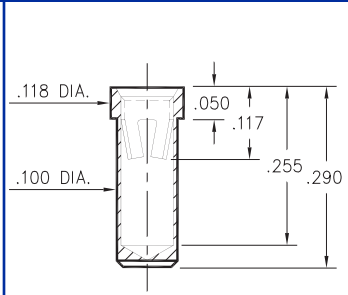


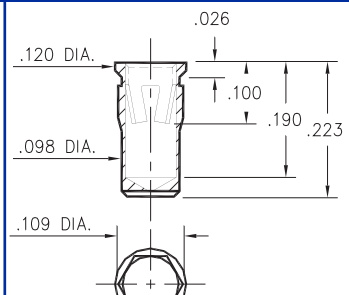
0364 0363 0365 0366



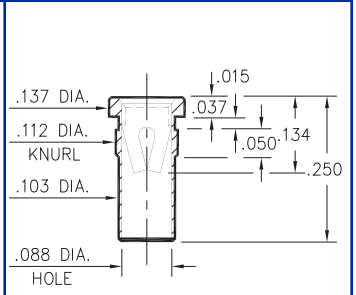
0364-0-15-XX-13-XX-10-0
Solder mount in .100 min. mounting hole
Also available on 16mm wide carrier
tape: 1,300 parts per 13" reel.
Order as: 0364-0-57-XX-13-XX-10-0



0363-0-15-XX-23-XX-10-0
Solder mount in .102 min. mounting hole

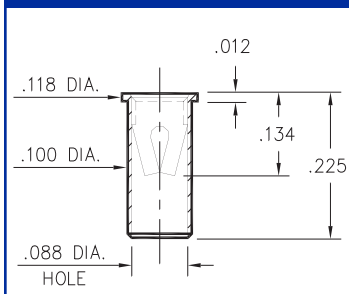


0365-0-15-XX-23-XX-10-0
Hex press-fit in .105 plated thru hole

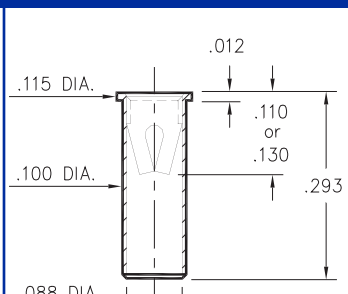


0366-0-15-XX-13-XX-10-0
Press-fit in .109 mounting hole

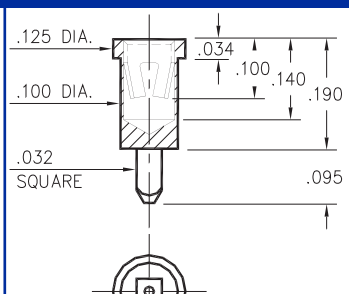
0372 0362 0367 9324



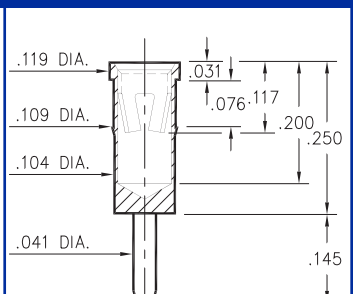
0372-0-15-XX-13-XX-10-0
Solder mount in .102 min. mounting hole
Also available on 24mm wide carrier
tape: 950 parts per 13" reel.
Order as: 0372-0-57-XX-13-XX-10-0



0362-0-15-XX-X3-XX-10-0
Solder mount in .102 min. mounting hole

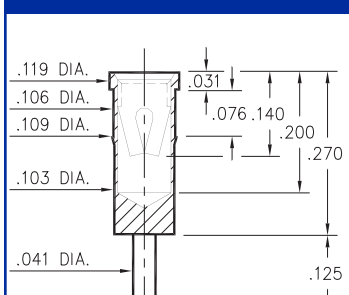


0367-0-15-XX-23-XX-10-0
Square press-fit in .040 plated thru hole

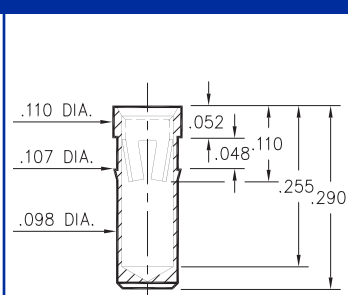


9324-0-15-XX-23-XX-04-0
Press-fit in .106 mounting hole

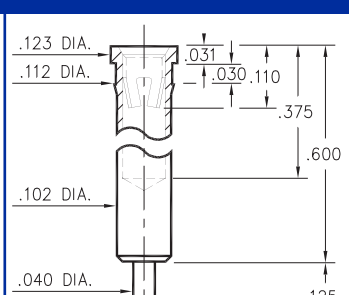
0492 0381 4034 3044



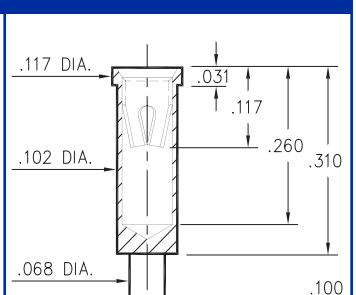
0492-0-15-XX-13-XX-04-0
Press-fit in .106 mounting hole



0381-0-15-XX-23-XX-10-0
Press-fit in .104 mounting hole



4034-0-15-XX-23-XX-04-0
Press-fit in .109 mounting hole



3044-0-15-XX-23-XX-04-0
Solder mount in .104 min. mounting hole

SPECIFICATIONS

SHELL MATERIAL:
Brass Alloy 360, 1/2 Hard

CONTACT MATERIAL:
Beryllium Copper Alloy 172, HT

DIMENSION IN INCHES
TOLERANCES ON:
LENGTHS: ±.005
DIAMETERS: ±.002
ANGLES: ± 2°

ORDER CODE: XXXX - X - 15 - XX - XX - XX - XX - 0

BASIC PART # →

SPECIFY SHELL FINISH: →

01 200μ" TIN/LEAD OVER NICKEL
◇ 80 200μ" TIN OVER NICKEL (RoHS)
◇ 15 10μ" GOLD OVER NICKEL (RoHS)

SPECIFY CONTACT FINISH: →

01 200μ" TIN/LEAD OVER NICKEL
◇ 80 200μ" TIN OVER NICKEL (RoHS)
◇ 27 30μ" GOLD OVER NICKEL (RoHS)

SELECT CONTACT
#13 or #23 CONTACT (DATA ON PAGE 226)

Mouser Electronics

Authorized Distributor

Click to View Pricing, Inventory, Delivery & Lifecycle Information:

Mill-Max:

[0364-0-15-15-13-27-10-0](#) [0366-0-15-01-13-27-10-0](#) [0362-0-15-15-23-14-10-0](#) [0365-0-15-01-23-27-10-0](#) [0367-0-15-01-23-14-10-0](#) [9324-0-15-01-23-27-04-0](#) [0364-0-15-01-13-27-10-0](#) [0365-0-15-01-23-14-10-0](#) [0367-0-15-01-23-01-10-0](#)
[9324-0-15-15-23-27-04-0](#) [9324-0-15-15-33-27-04-0](#)