

SPECIFICATIONS

Material: HEXSEALS: Silicone rubber conforms to A-A-59588 Class III, GR 50 (unless otherwise specified)

Mounting Nut: HEXSEALS: Brass, nickel-plated

Temperature Range: HEXSEALS: -94°F to +400°F

Pressure Range: Exceeds 15 psi internal and 1500 psi external.

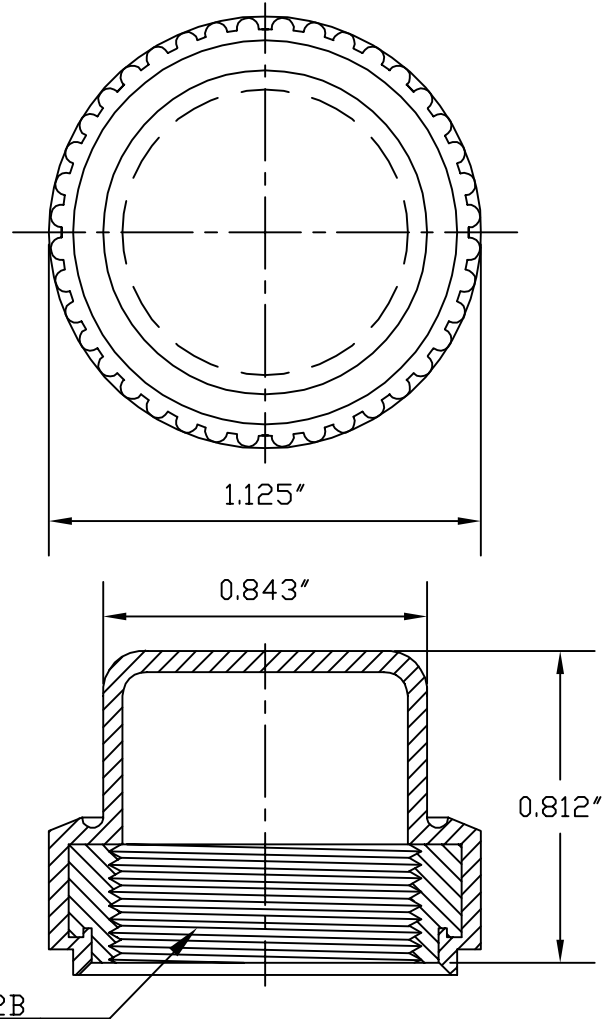
Operational Life: 30,000 actuations (minimum).

Shelf Life: Excess of 25 years.

Resistant to: Salt spray, sunlight, ozone, weather, fungus, and most acids and lubricating oils

Agency Recognition: E-SEELS and HEXSEALS are UL-listed to UL Std. 50 types 1-13, and meet CSA standards.

Installation: If a reducing adaptor is required - see page 14 of HEXSEAL catalog HEX200 for part numbers and drawing.



| O | REDRAWN and MAT'L CHANGED | S.GOK | 05-14-09 |
|---|--|----------------|---------------------|
| N | CAD COMPUTER GENERATED | | 9-23-02 |
| M | MAT'L. NUT WAS ALUMINUM | NICK | 8-27-69 |
| L | ALUM. SPEC. WAS QQ-A22-15A | NICK | 8-9-69 |
| K | REDRAWN, ADDED SPECS, CORRECT BOOT AND ADAPTER P/N CALLOUT | NICK | 1-13-67 |
| REV. | DESCRIPTION | | DATE |
| MAXIMUM AND MINIMUM MEASUREMENTS ARE STATED DIRECTLY ON EACH DIMENSION. | TITLE BOOT, INDICATOR AND LIGHTED PUSHBUTTON (4080) | ENG. | M.M. |
| | | DWN. | ANDREWS |
| | | CHKD. | B.G. |
| MAT'L: SILICONE RUBBER A-A-59588 CLIII GR50 | APM-HEXSEAL CORPORATION | SCALE 2 : 1 | (4080) HEXSEAL ® |
| FINISH: TRANSPARENT CLEAR | | DWG. NO. | |

THIS DRAWING COVERS PROPRIETARY ITEM AND IS THE PROPERTY OF THE APM-HEXSEAL CORPORATION.
THIS DRAWING IS NOT TO BE COPIED OR USED WITHOUT THE WRITTEN APPROVAL OF AN OFFICER OF THE APM-HEXSEAL CORPORATION.

Mouser Electronics

Authorized Distributor

Click to View Pricing, Inventory, Delivery & Lifecycle Information:

[APM HEXSEAL:](#)

[4080](#) [4080-3](#)