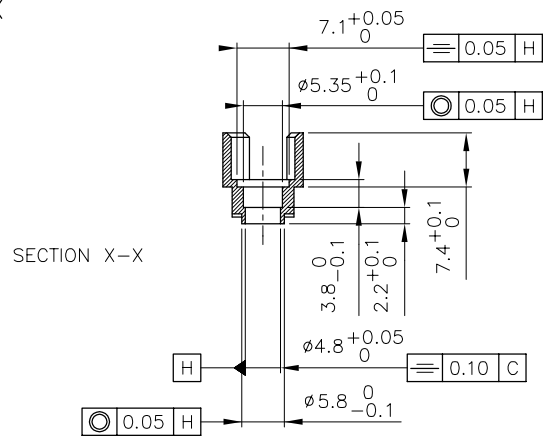
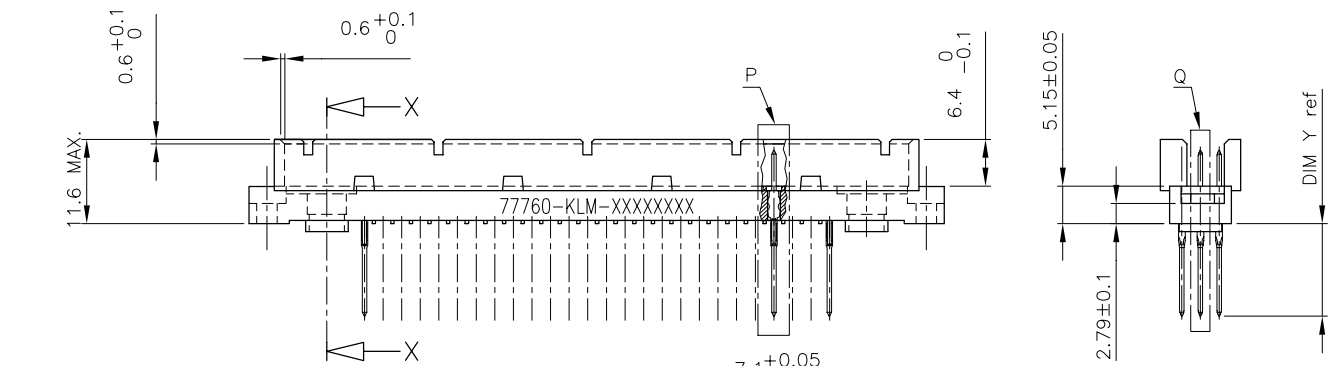
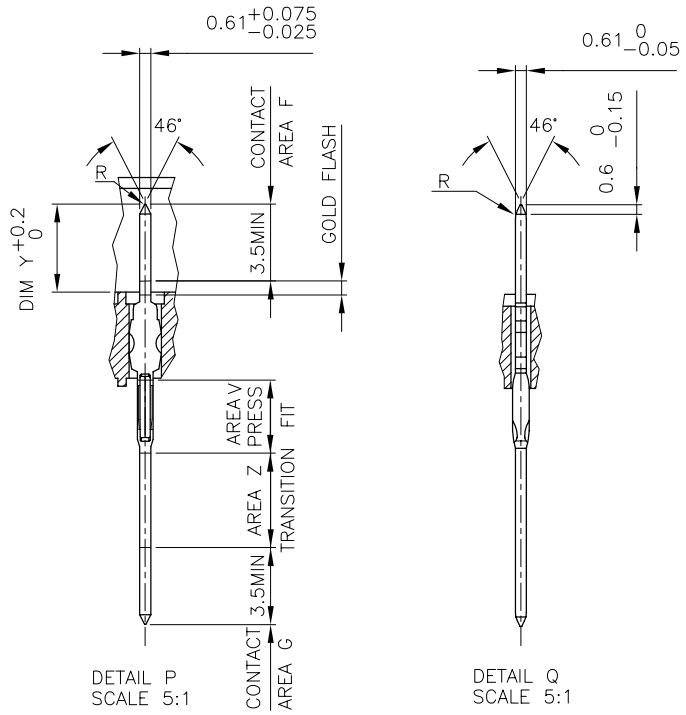
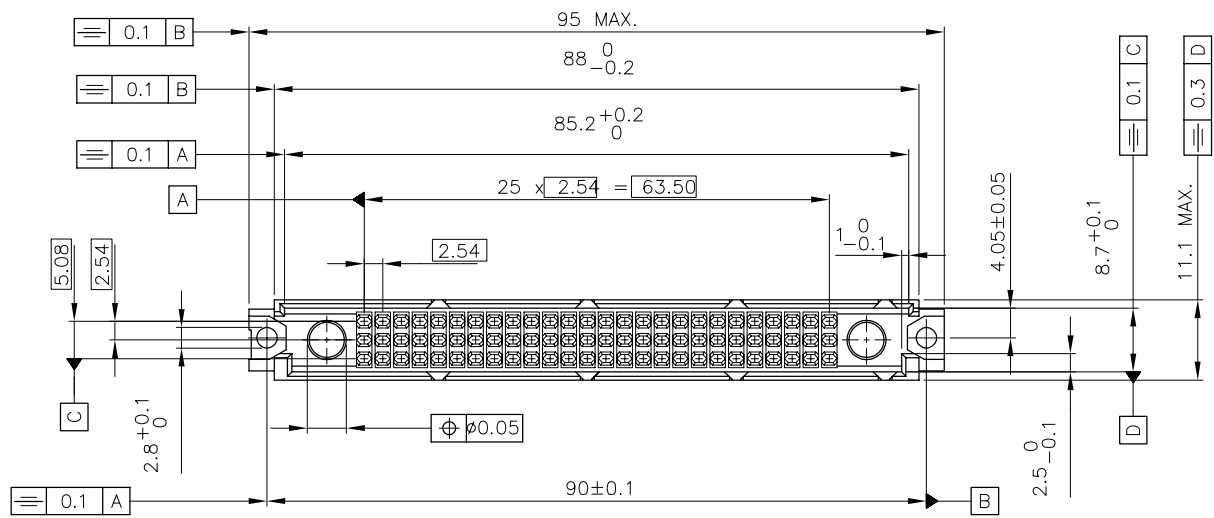


PRODUCT NUMBER: SEE NEXT SHEET(S)

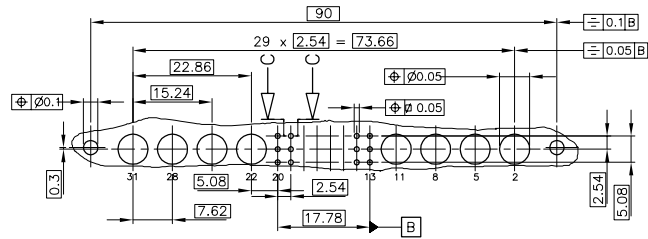


- NOTES:
- 1 MATERIAL BODY: THERMOPLASTIC POLYESTER 30% GLASS FILLED, FLAME RETARDANT PER UL-94-V0, COLOUR GREY
 - 2 MATERIAL PIN: PHOSPHOR BRONZE
 - 3 OVERALL UNDERPLATING Ni
 - 4 FOR REPAIR SEE TA 562 A AND TA 562 B
 - 5 LASER PRINTING CONSISTS OF 77760-KLM-XXXXXXX
 - 6 PRODUCT NUMBER _____
 - 7 PLATING CODE _____
 - 8 PIN LENGTH CODE _____
 - 9 LOADING PATTERN _____
 - 10 BATCH CODE _____
 - 11 NORMAL CONTACT "X" DIM Y=4.8 mm
 - 12 FMLB CONTACT "O" DIM Y=5.5 mm
 - 13 77760-545 IS NOT TOOLED

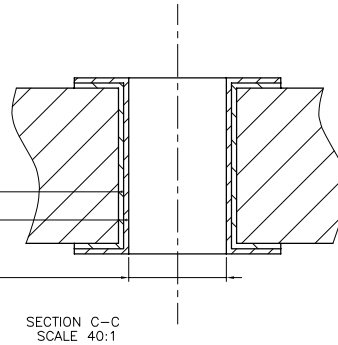
mat'l. code		SEE NOTE 1		tolerances unless otherwise specified		CUSTOMER COPY			
ltr	ec'n no	dr	date	linear	projection	title		HYBRID MALE	
H	F80355	OMA	98.06.11			REVERSED DIN		www.fciconnect.com	
				angles	mm	product family		BACKPANEL	
				dr M. VISSCHERS	93.01.08	scale		2:1	
				engr R. BEKKER	94.07.17	A2		77760	
				chr M. LOMAN	93.01.08	sheet		213	
				app'd B. TEUNISSEN	94.07.17	1 of 2			
sheet index	revision sheet	H	J						
		1	2						

PRODUCT NR	ROW	31	30	29	28	27	26	25	24	23	22	21	19	17	15	13	11	9	7	5	3	1	
77760-KL1	a	X	X	X	X	X	X	X	X	X	X	X	X	X	X	X	X	X	X	X	X	X	X
	b	X	X	X	X	X	X	X	X	X	X	X	X	X	X	X	X	X	X	X	X	X	X
	c	X	X	X	X	X	X	X	X	X	X	X	X	X	X	X	X	X	X	X	X	X	X
77760-KL2	a				X	X	X	X	X	X	X	X	X	X	X	X	X	X	X	X	X	X	X
	b				X	X	X	X	X	X	X	X	X	X	X	X	X	X	X	X	X	X	X
	c				X	X	X	X	X	X	X	X	X	X	X	X	X	X	X	X	X	X	X
77760-KL3	a						X	X	X	X	X	X	X	X	X	X	X	X	X	X	X	X	X
	b						X	X	X	X	X	X	X	X	X	X	X	X	X	X	X	X	X
	c						X	X	X	X	X	X	X	X	X	X	X	X	X	X	X	X	X
77760-KL4	a									X	X	X	X	X	X	X	X	X	X	X	X	X	X
	b									X	X	X	X	X	X	X	X	X	X	X	X	X	X
	c									X	X	X	X	X	X	X	X	X	X	X	X	X	X
77760-KL5	a											X	O	O	X	X	X	X	X	X	X	X	X
	b											X	O	O	X	X	X	X	X	X	X	X	X
	c											X	O	O	X	X	X	X	X	X	X	X	X

SEE NOTE 6 SHEET 1



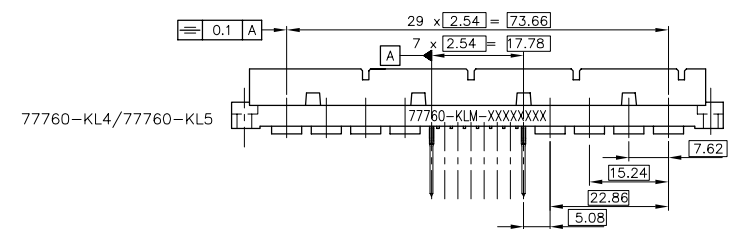
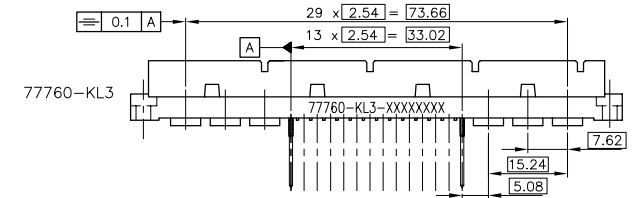
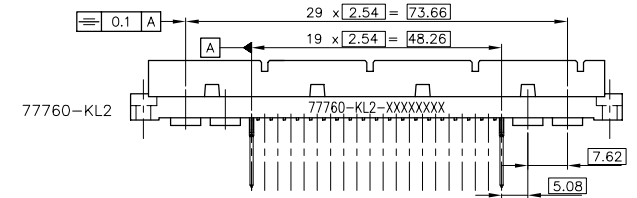
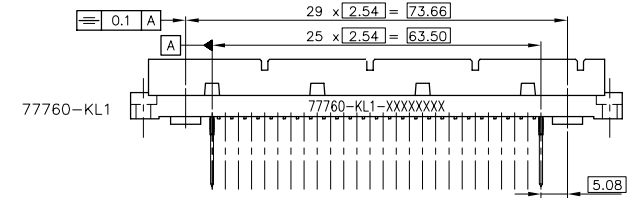
DRILLED HOLE $\phi 1.15 \pm 0.025$ DIA.
 COPPER PLATING 0.025 MIN. 0.075 MAX.
 TIN/LEAD PLATING 0.005 MIN. 0.015 MAX.
 FINISHED HOLE $\phi 1.88$ MIN $\phi 1.09$ MAX



77760-8LM	0.80 μ m Au min	2-5 μ m SnPb	1-3 μ m SnPb	2-5 μ m SnPb
77760-7LM	1.25 μ m Au min	2-5 μ m SnPb	1-3 μ m SnPb	2-5 μ m SnPb
77760-6LM	2.00 μ m Au min	2-5 μ m SnPb	1-3 μ m SnPb	2-5 μ m SnPb
77760-54M	2.00 μ m Au min	0.80 μ m Au min	1-3 μ m SnPb	2-4 μ m Ni
77760-52M	2.00 μ m Au min	GOLD FLASH	GOLD FLASH	GOLD FLASH
77760-3LM	2.00 μ m Au min	2.00 μ m Au min	GOLD FLASH	GOLD FLASH
77760-2LM	0.80 μ m Au min	0.80 μ m Au min	GOLD FLASH	GOLD FLASH
77760-1LM	1.25 μ m Au min	1.25 μ m Au min	GOLD FLASH	GOLD FLASH
PLATING CODE K	CONTACT AREA F	CONTACT AREA G	PRESS FIT AREA V	TRANSITION AREA Z

PLATING

77760-K4M	19
77760-K3M	20
77760-K2M	13
77760-K1M	6
PIN LENGTH CODE L	DIM Y



matl code	SEE TABLE	tolerances unless otherwise specified	CUSTOMER COPY	FCI ELECTRONICS
litr	no	date	projection	title
H	FB0312	PNZ 98.04.30	linear	HYBRID MALE
J	FB0355	OMA 98.06.11		REVERSED DIN
		angles		product family
		dr D. MATHIEVON 98.06.11	mm	BACK PANEL
		enfr M. MELNIER 98.06.11	scale	code
		chr D. MATHIEVON 98.06.11	2:1	213
		appd M. ME 98.06.11	A1	77760
sheet index	revision sheet			sheet 2 of